

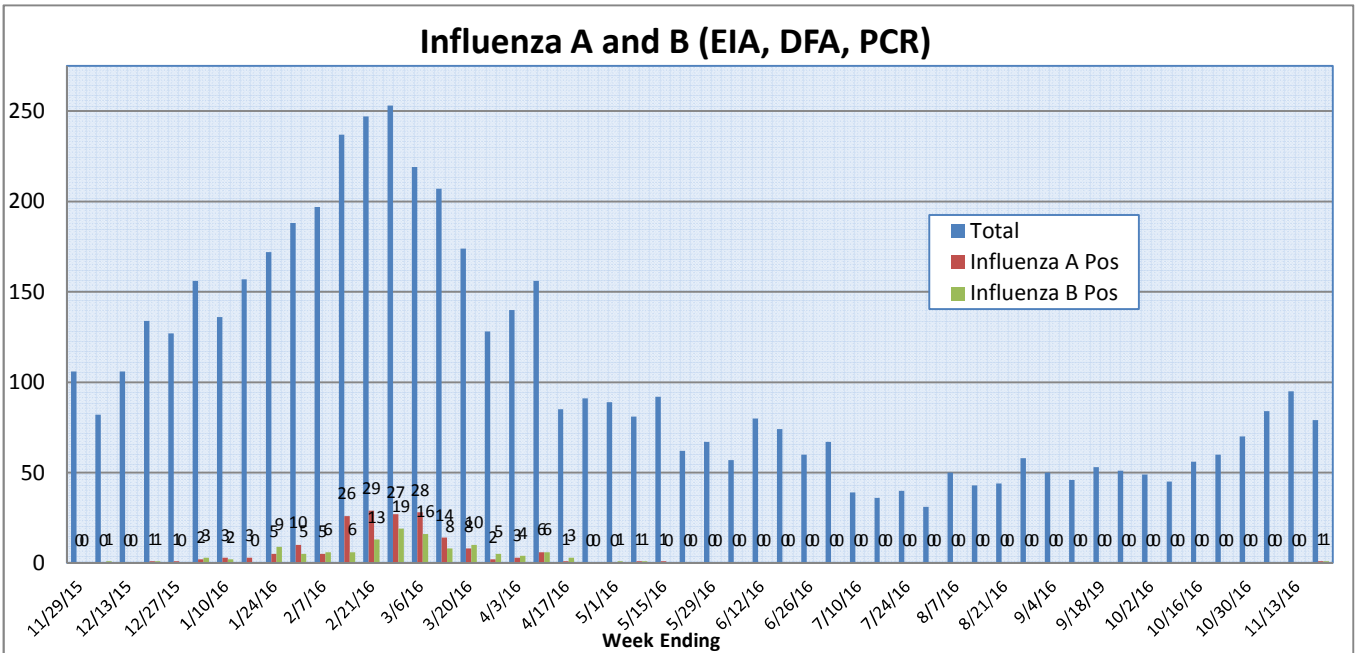
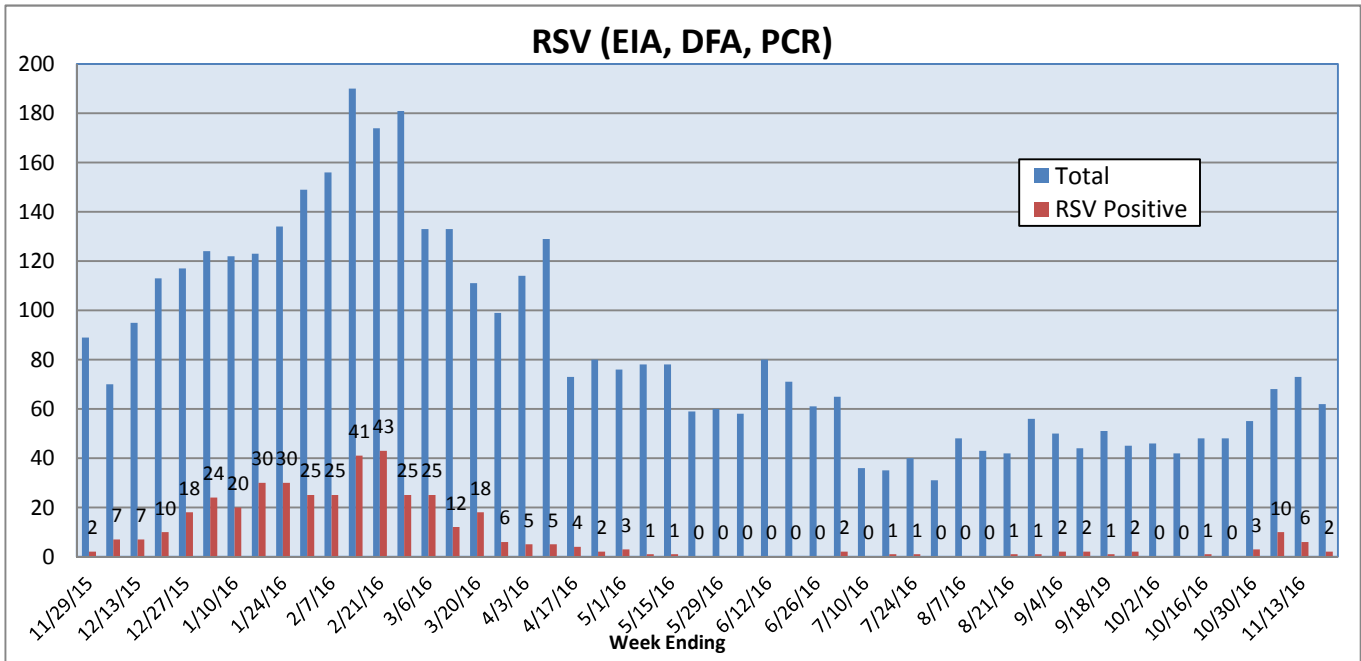
Pathogens Report

The following report is a listing of selected pathogens detected at Rady Children's Hospital Laboratory. The report includes data from adult and pediatric specimens collected locally.**

November 14-20, 2016

	Positive Tests Current Week	Total Tests Current Week	Positive Tests YTD*	Total Tests YTD*
RSV (DFA and PCR)	2	62	22	396
Influenza A (EIA, DFA, and PCR)	1	79	1	489
Influenza B (EIA, DFA, and PCR)	1	79	1	489
**Parainfluenza (PCR and DFA)	5	62	43	379
**Adenovirus (PCR and DFA)	0	62	12	379
**Rhinovirus (PCR)	13	52	81	305
**Metapneumovirus (PCR)	0	52	1	305
B. pertussis/parapertussis (PCR)	2	81	22	402
Enterovirus, CSF (PCR)	0	12	2	78

* From October 3, 2016. **PCR testing performed on RCH inpatients only.



Pathogens Report

