

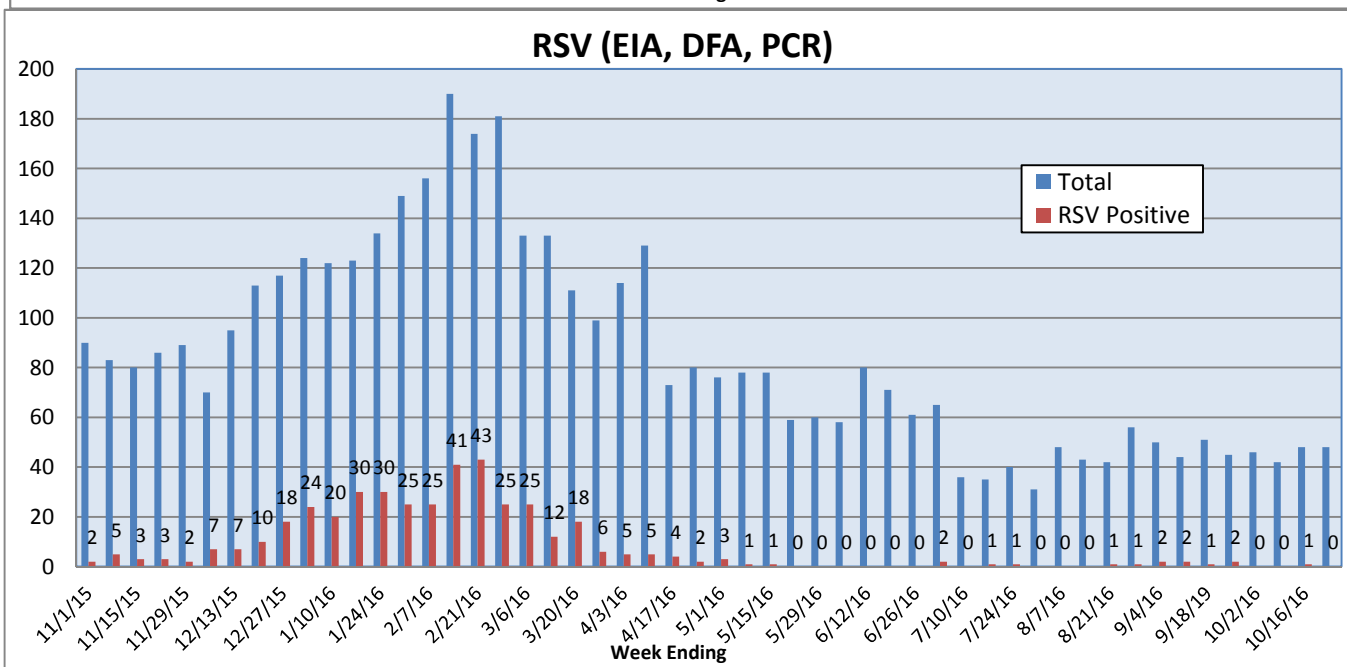
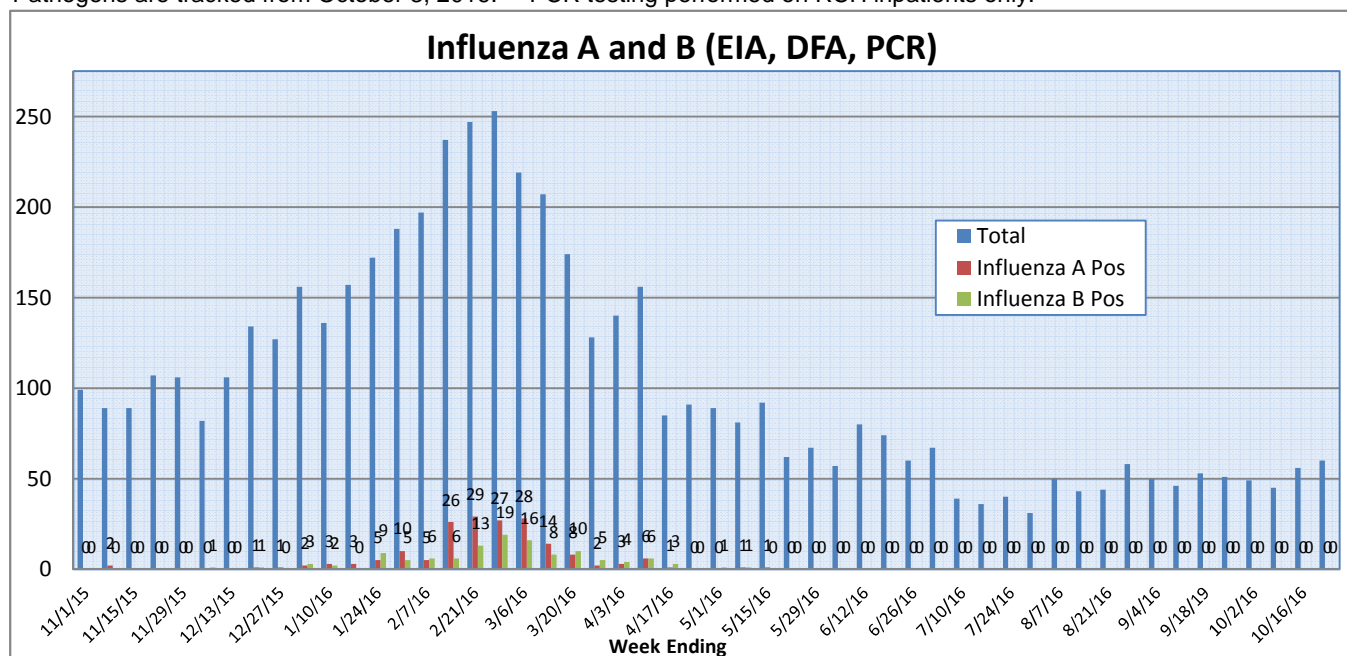
## Pathogens Report

The following report is a listing of selected pathogens detected at Rady Children's Hospital Laboratory. The report includes data from adult and pediatric specimens collected locally.\*\* This information is provided for use by physicians and other health care professionals.

**October 17-23, 2016**

	Positive Tests Current Week	Total Tests Current Week	Positive Tests YTD*	Total Tests YTD*
<b>RSV (EIA, DFA, and PCR)</b>	0	48	0	90
<b>Influenza A (EIA, DFA, and PCR)</b>	0	60	0	101
<b>Influenza B (EIA, DFA, and PCR)</b>	0	60	0	101
<b>**Parainfluenza (PCR and DFA)</b>	5	46	19	133
<b>**Adenovirus (PCR and DFA)</b>	1	46	6	133
<b>**Rhinovirus (PCR)</b>	11	38	31	108
<b>**Metapneumovirus (PCR)</b>	0	38	0	108
<b>B. pertussis/parapertussis (PCR)</b>	3	50	9	138
<b>Enterovirus, CSF (PCR)</b>	0	15	2	42

\*Pathogens are tracked from October 3, 2016. \*\*PCR testing performed on RCH inpatients only.



# Pathogens Report

