

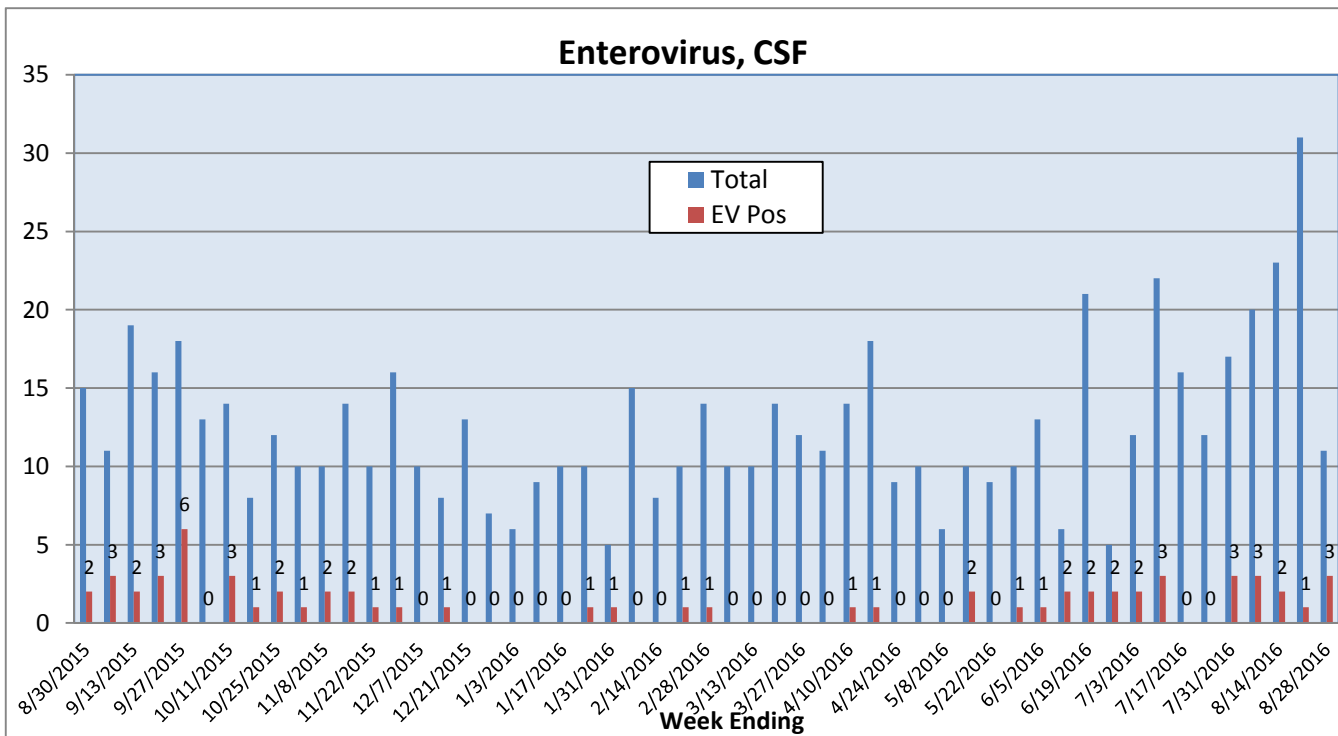
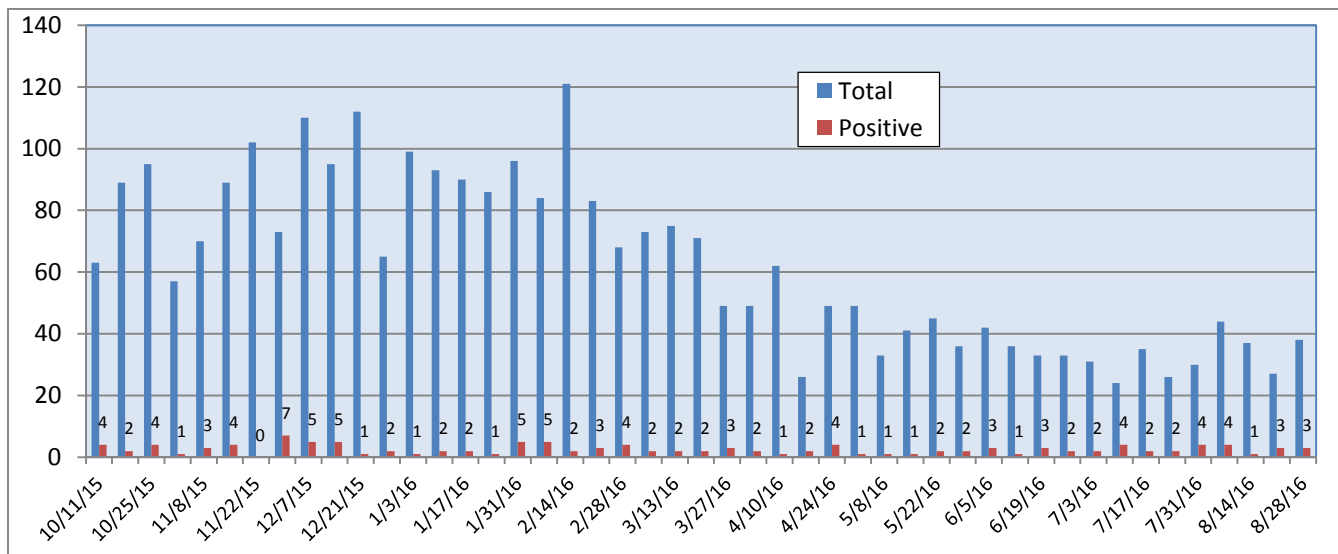
Pathogens Report

The following report is a listing of selected pathogens detected at Rady Children's Hospital. The report includes data from adult and pediatric specimens collected locally.** This information is provided for use by physicians and other health care professionals.

August 22-28, 2016

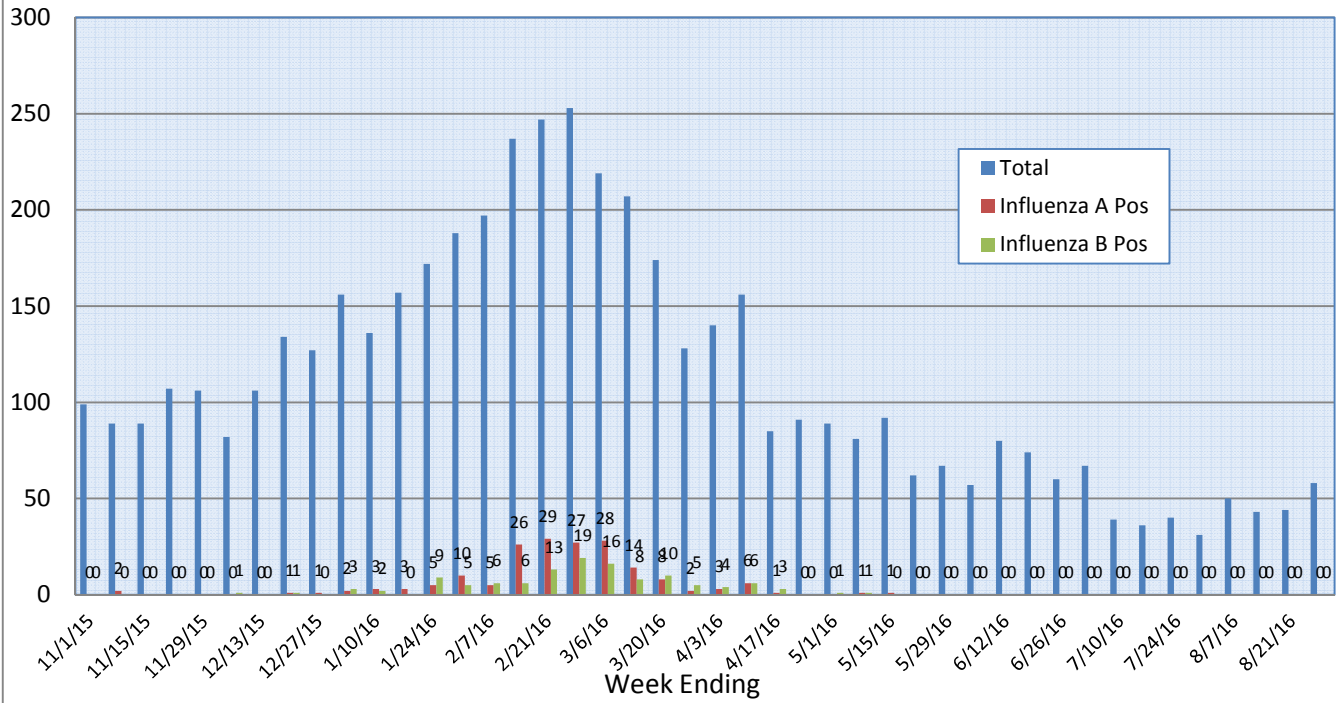
| | Positive Tests Current Week | Total Tests Current Week | Positive Tests YTD* | Total Tests YTD* |
|---|-----------------------------|--------------------------|---------------------|------------------|
| RSV (EIA, DFA, and PCR) | 1 | 56 | 412 | 4239 |
| Influenza A (EIA, DFA, and PCR) | 0 | 58 | 181 | 5159 |
| Influenza B (EIA, DFA, and PCR) | 0 | | 120 | |
| B. pertussis/parapertussis (PCR) | 3 | 38 | 122 | 2934 |
| **Parainfluenza (PCR and DFA) | 2 | 47 | 117 | 2206 |
| **Rhinovirus (PCR) | 16 | | 563 | |
| **Adenovirus (PCR and DFA) | 1 | | 144 | |
| **Metapneumovirus (PCR) | 0 | | 127 | |
| Enterovirus, CSF (PCR) | 3 | | 11 | |

*Pathogens are tracked from October 5, 2015. **PCR testing performed on RCH inpatients only.



Pathogens Report

Influenza A and B (EIA, DFA, PCR)



RSV (EIA, DFA, PCR)

