

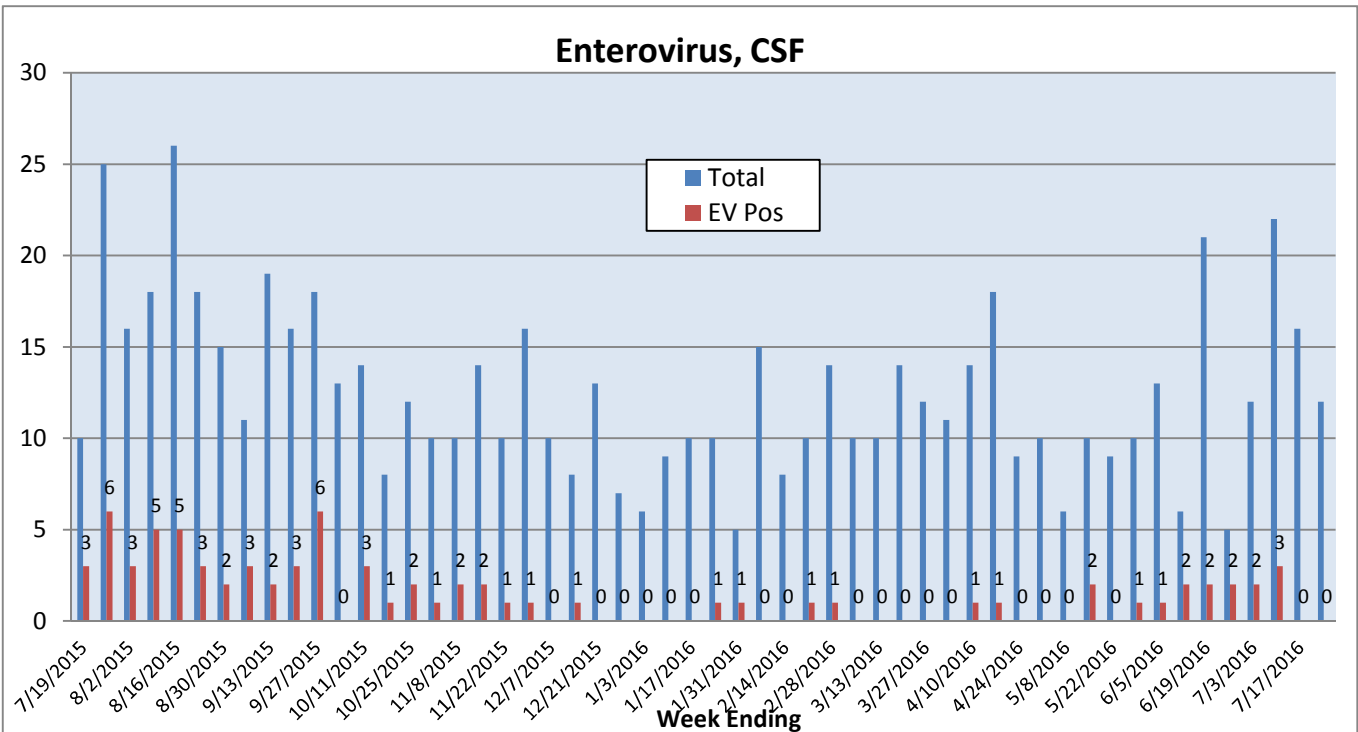
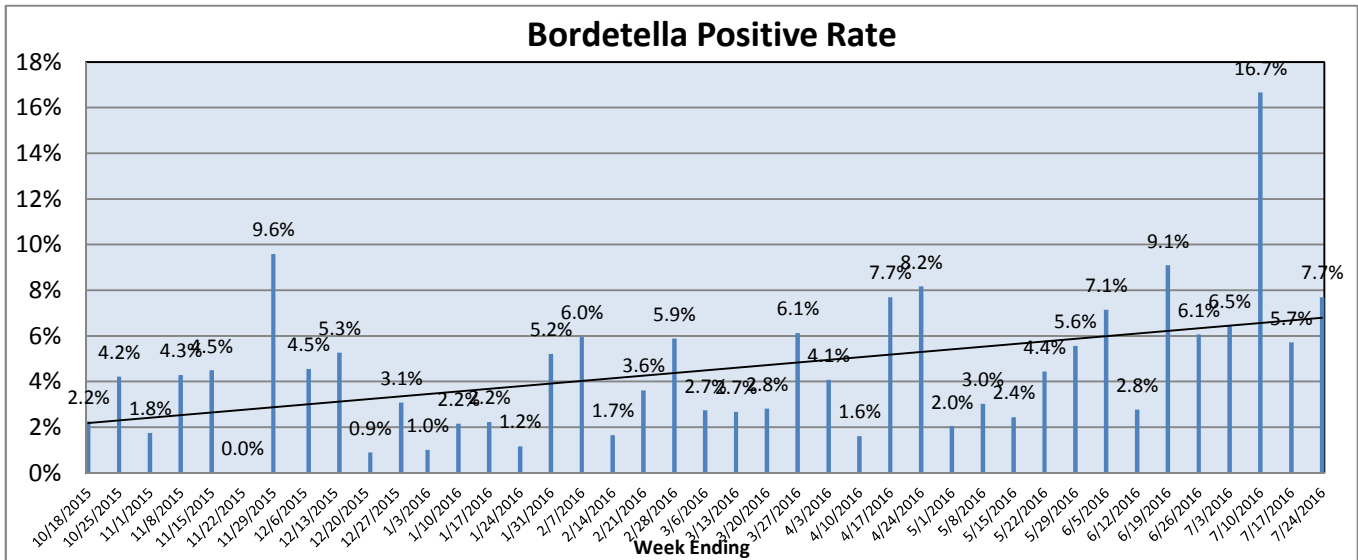
Pathogens Report

The following report is a listing of selected pathogens detected at Rady Children's Hospital. The report includes data from adult and pediatric specimens collected locally.** This information is provided for use by physicians and other health care professionals.

July 18-24, 2016

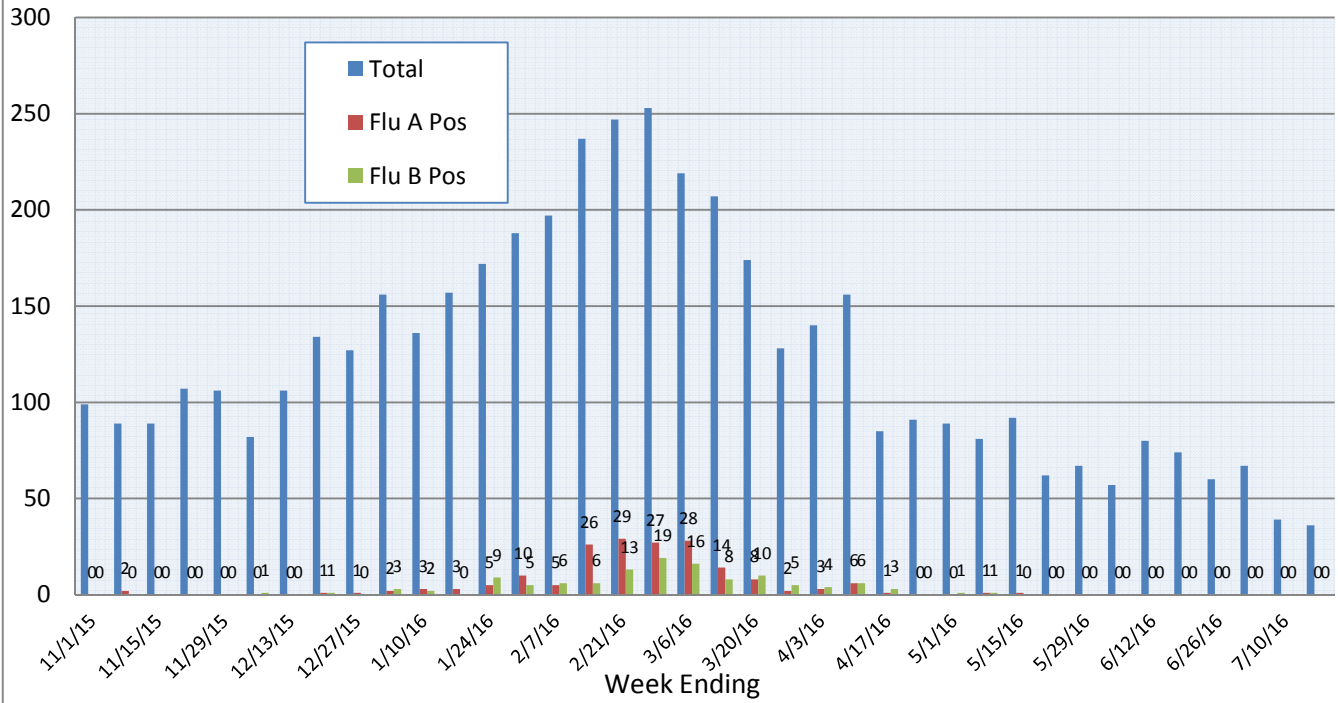
	Positive Tests Current Week	Total Tests Current Week	Positive Tests YTD*	Total Tests YTD*
RSV (EIA, DFA, and PCR)	1	40	410	4019
Influenza A (EIA, DFA, and PCR)	0	40	181	4933
Influenza B (EIA, DFA, and PCR)	0		120	
B. pertussis/parapertussis (PCR)	2	26	107	2758
**Parainfluenza (PCR and DFA)	5	31	103	2016
**Rhinovirus (PCR)	12		507	
**Adenovirus (PCR and DFA)	1		138	
**Metapneumovirus (PCR)	0		127	
Enterovirus, CSF (PCR)	0		35	

*Pathogens are tracked from October 5, 2015. **PCR testing performed on RCH inpatients only.



Pathogens Report

Influenza A and B (EIA, DFA, PCR)



RSV (EIA, DFA, PCR)

