

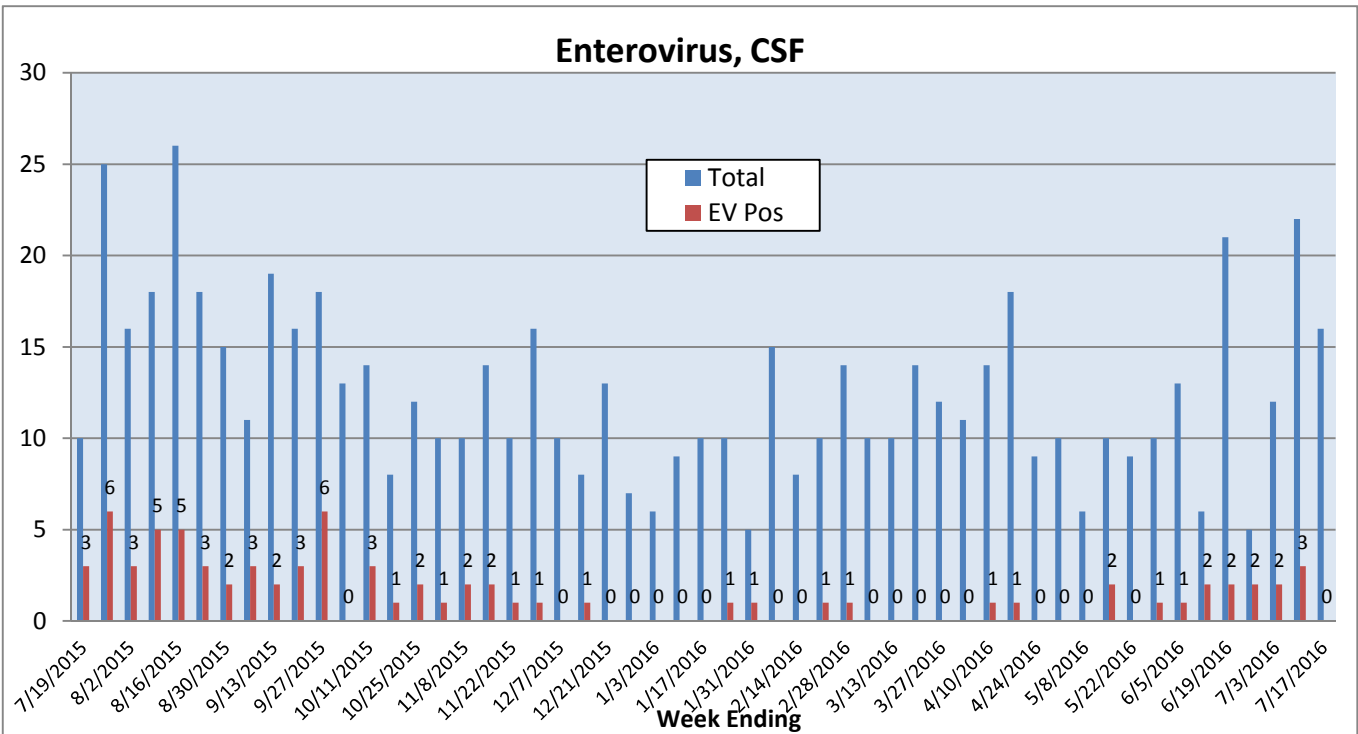
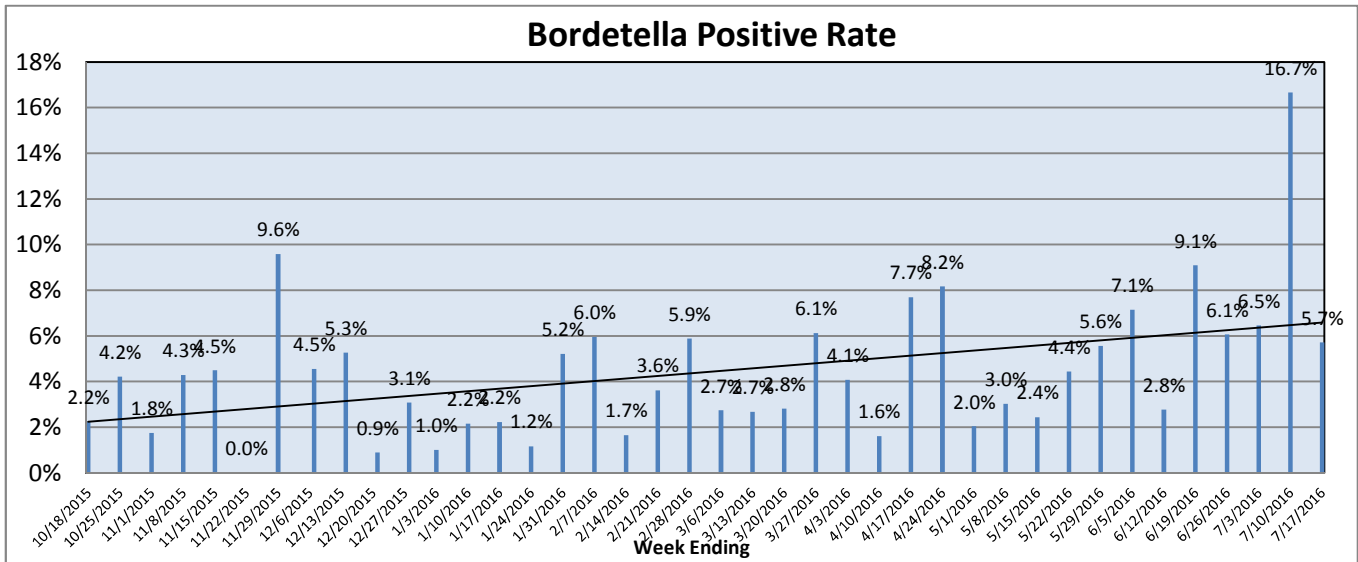
## Pathogens Report

The following report is a listing of selected pathogens detected at Rady Children's Hospital. The report includes data from adult and pediatric specimens collected locally.\*\* This information is provided for use by physicians and other health care professionals.

July 11-17, 2016

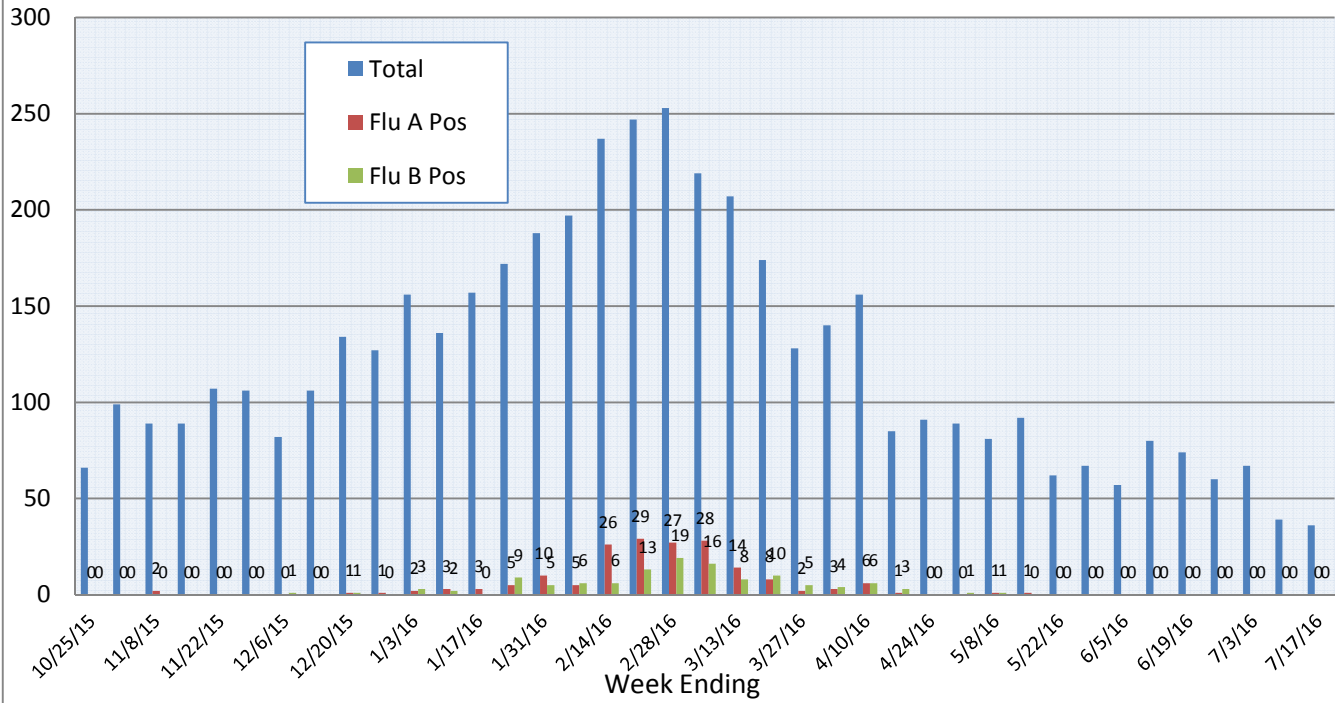
	Positive Tests Current Week	Total Tests Current Week	Positive Tests YTD*	Total Tests YTD*
<b>RSV (EIA, DFA, and PCR)</b>	35	1	408	3944
<b>Influenza A (EIA, DFA, and PCR)</b>	36	0	181	4857
<b>Influenza B (EIA, DFA, and PCR)</b>	36		120	
<b>B. pertussis/parapertussis (PCR)</b>	2	0	105	2732
<b>**Parainfluenza (PCR and DFA)</b>	3	31	98	1985
<b>**Rhinovirus (PCR)</b>	8		495	
<b>**Adenovirus (PCR and DFA)</b>	3		137	
<b>**Metapneumovirus (PCR)</b>	1		127	
<b>Enterovirus, CSF (PCR)</b>	0	16	35	457

\*Pathogens are tracked from October 5, 2015. \*\*PCR testing performed on RCH inpatients only.



# Pathogens Report

## Influenza A and B (EIA, DFA, PCR)



## RSV (EIA, DFA, PCR)

