

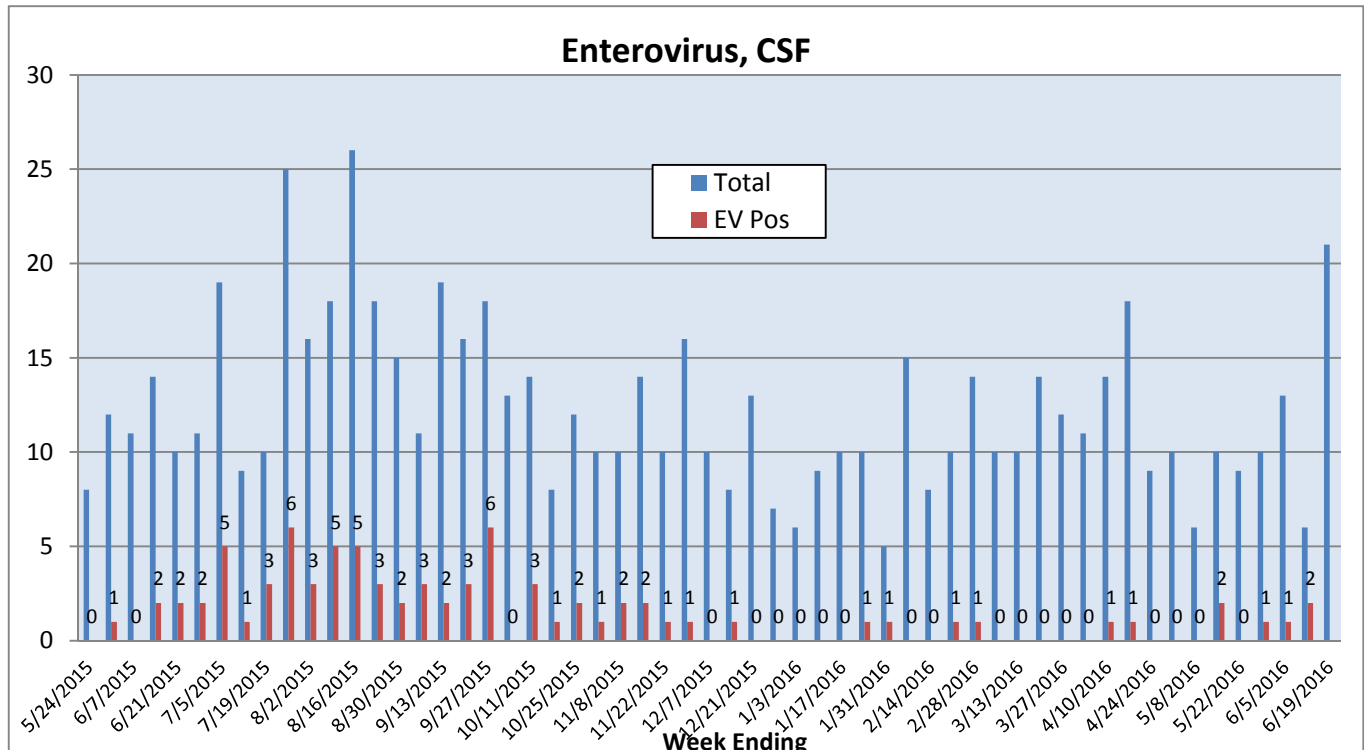
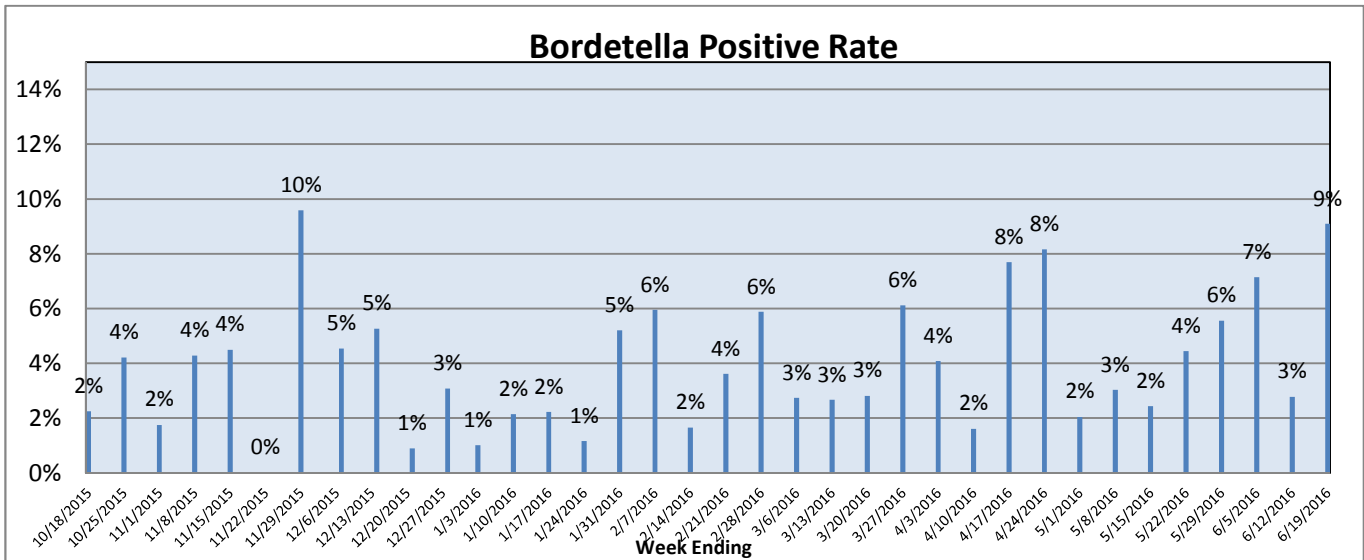
## Pathogens Report

The following report is a listing of selected pathogens detected at Rady Children's Hospital. The report includes data from adult and pediatric specimens collected locally.\*\* This information is provided for use by physicians and other health care professionals.

June 13-19, 2016

	Positive Tests Current Week	Total Tests Current Week	Positive Tests YTD*	Total Tests YTD*
<b>RSV (EIA, DFA, and PCR)</b>	0	71	406	3782
<b>Influenza A (EIA, DFA, and PCR)</b>	0	74	181	4691
<b>Influenza B (EIA, DFA, and PCR)</b>	0		120	
<b>B. pertussis/parapertussis (PCR)</b>	3	33	95	2609
<b>**Parainfluenza (PCR and DFA)</b>	5	47	81	1847
<b>**Rhinovirus (PCR)</b>	10		465	
<b>**Adenovirus (PCR and DFA)</b>	3		127	
<b>**Metapneumovirus (PCR)</b>	0		124	
<b>Enterovirus, CSF (PCR)</b>	2		21	

\*Pathogens are tracked from October 5, 2015. \*\*PCR testing performed on RCH inpatients only.



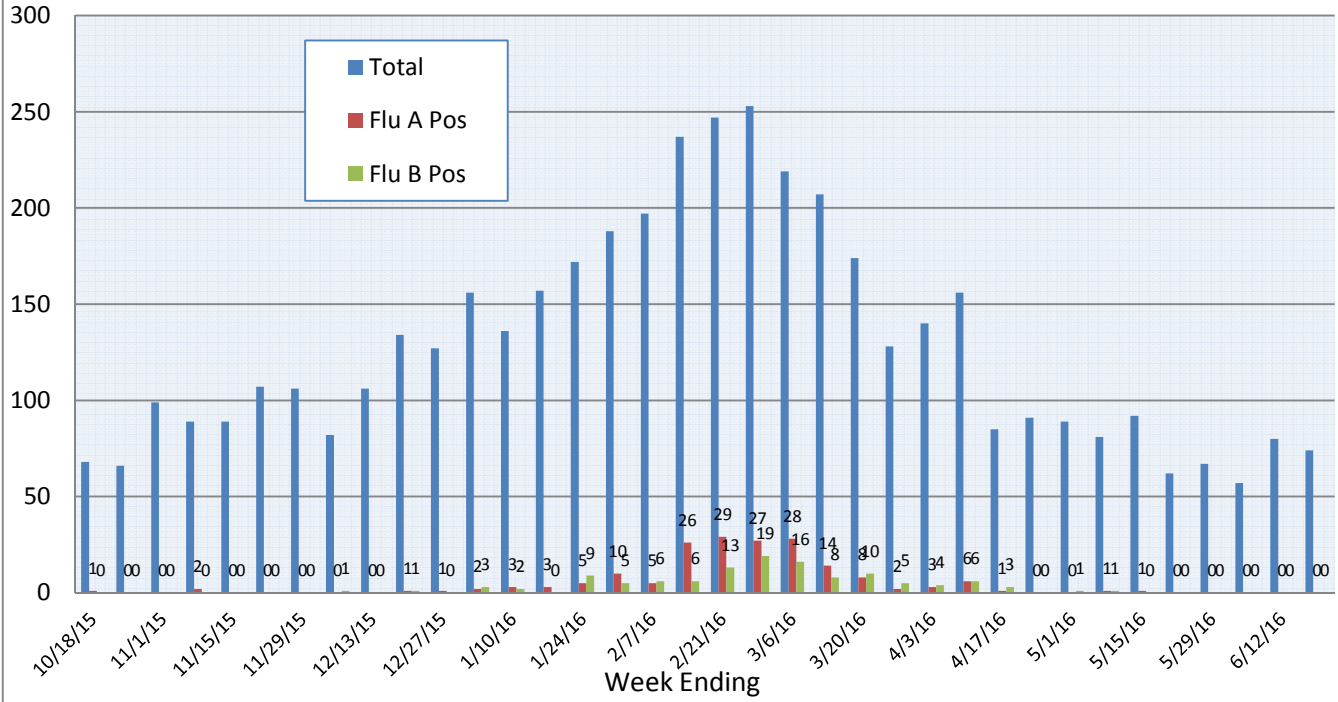
# Pathogens Report

Week Ending



# Pathogens Report

## Influenza A and B (EIA, DFA, PCR)



## RSV (EIA, DFA, PCR)

