

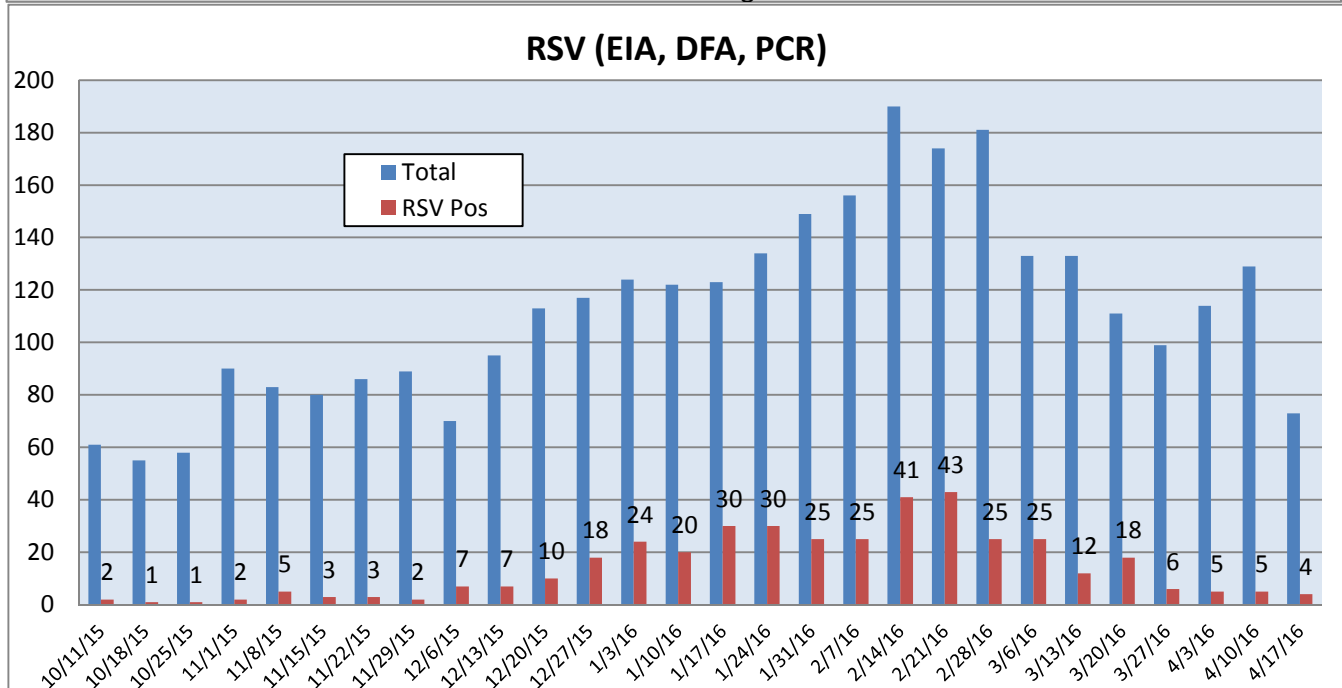
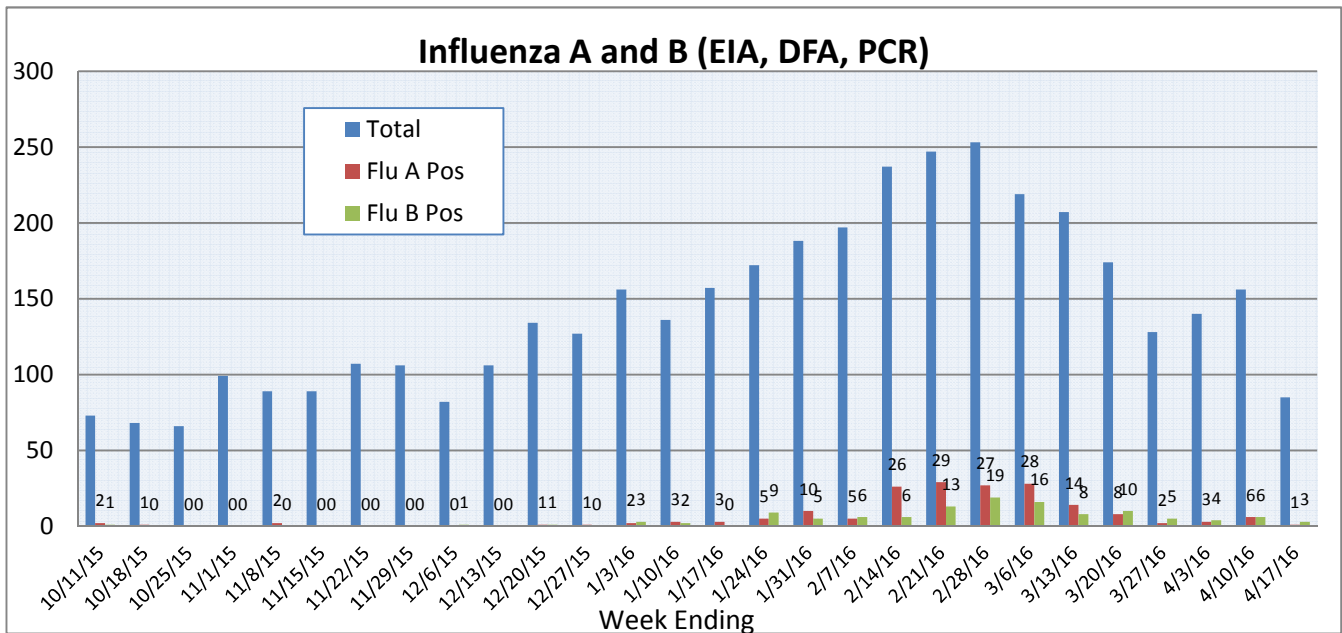
## Pathogens Report

The following report is a listing of selected pathogens detected at Rady Children's Hospital. The report includes data from adult and pediatric specimens collected locally.\*\* This information is provided for use by physicians and other health care professionals.

**April 11-17, 2016**

	Positive Tests Current Week	Total Tests Current Week	Positive Tests YTD*	Total Tests YTD*
<b>RSV (EIA, DFA, and PCR)</b>	4	73	399	3142
<b>Influenza A (EIA, DFA, and PCR)</b>	1	85	179	3998
<b>Influenza B (EIA, DFA, and PCR)</b>	3		118	
<b>B. pertussis/parapertussis (PCR)</b>	2	26	77	2245
<b>**Parainfluenza (PCR and DFA)</b>	1	43	62	1476
<b>**Rhinovirus (PCR)</b>	6		362	
<b>**Adenovirus (PCR and DFA)</b>	5		86	
<b>**Metapneumovirus (PCR)</b>	3		116	
<b>Enterovirus, CSF (PCR)</b>	1		20	

\*Pathogens are tracked from October 5, 2015. \*\*PCR testing performed on RCH inpatients only.

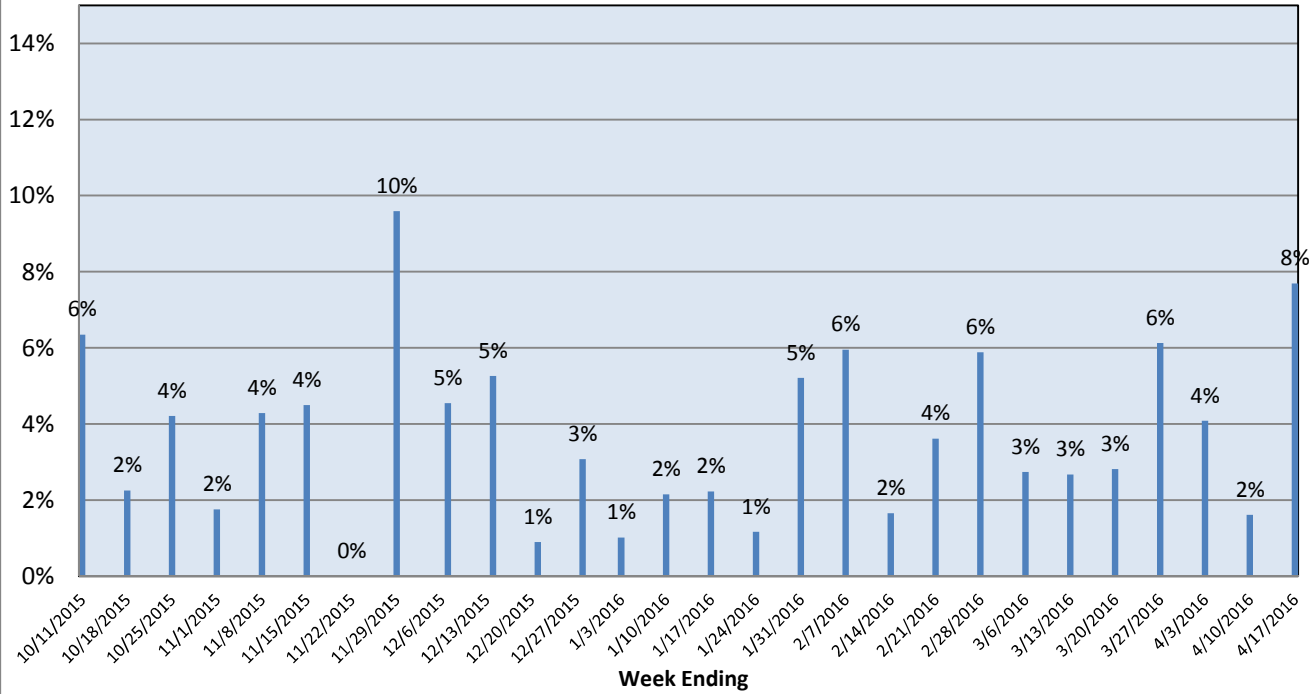


# Pathogens Report

Week Ending

# Pathogens Report

## Bordetella Positive Rate



## Enterovirus, CSF

