



INFLUENZA WATCH

Week 6
Ending 2/13/2016

The purpose of the weekly *Influenza Watch* is to summarize current influenza surveillance in San Diego County. **Please note that reported weekly data are preliminary and may change due to delayed submissions and additional laboratory results.**

Report Contents

- Page 1: Overview & Indicators
- Page 2: Virus Characteristics
- Pages 3-7: Trend graphs
- Page 7: Reporting Information

Current Week

Current Week 6 (ending 2/13/2016)

- 616 new influenza detections reported: *Elevated level*
- 6% influenza-like-illness (ILI) among emergency department visits: *Expected level*
- 1 influenza-related death reported this week
- 7% of deaths registered with pneumonia and/or influenza: *Expected level*

Current Season Summary

- 1,812**
Total Cases
- 30**
ICU Cases
- 6**
Deaths
- 4**
Outbreaks

Virus Characteristics

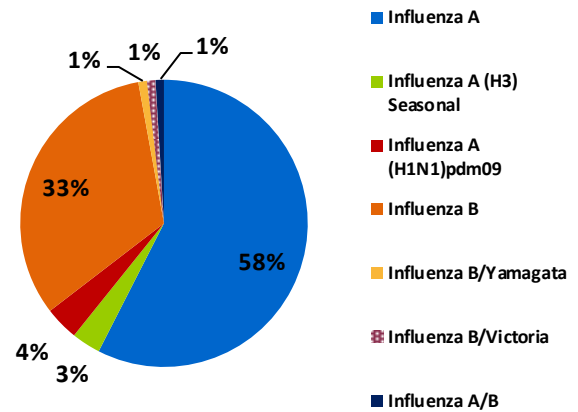


Table 1. Influenza Surveillance Indicators

Indicator	FY 2015-16*			FY 2014-15		Prior 3-Year Average**	
	Week 6	Week 5	FYTD#	Week 6	FYTD#	Week 6	FYTD#
	All influenza detections reported (rapid or PCR)	616	266	1,812	642	5,484	589
Percent of emergency department visits for ILI	6%	5%		6%		8%	
Percent of deaths registered with pneumonia and/or influenza	7%	7%		9%		10%	
Number of influenza-related deaths reported^	1	0	6	9	66	9	53

* FYTD=Fiscal Year To Date (FY is July 1- June 30, Weeks 27-26). Total deaths reported in prior years: 97 in 2014-15, 70 in 2013-14, 65 in 2012-13.

** Previous weeks case counts or percentages may change due to delayed processing or reporting.

^ Includes FYs 2014-15, 2013-14, and 2012-13.

^ Current FY deaths are shown by week of report; by week of death for prior FYs.

High poverty rates associated with higher rates of flu hospitalization

Influenza-related hospitalization rates and high poverty levels showed a "robust" correlation, according to an analysis of data from 14 states during the 2010-11 to 2011-12 flu seasons published on February 12, 2016 in *Morbidity and Mortality Weekly Report (MMWR)*.

The age-adjusted incidence of flu-related hospitalization in communities where 20% or more of households were below the federal poverty line (i.e., high poverty) was 21.5 per 100,000 person-years (95% confidence interval [CI], 20.7 to 22.4), compared with 10.9 (CI, 10.3 to 11.4) in areas where fewer than 5% of households were below the poverty line (i.e., low poverty).

The study found that vaccination rates were lower in areas with a higher poverty level. Unvaccinated persons 65 years of age or older accounted for 94% of hospitalized cases in high-poverty areas, compared with 80% in lower poverty areas.

Persons in poorer neighborhoods should be a focus for enhanced influenza vaccination outreach and early use of antiviral treatment. Although the flu vaccine is available at many physician's offices, community clinics and retail pharmacies, influenza vaccine is also available at San Diego County Public Health Centers for **anyone 6 months and older, regardless of health insurance status**. The cost is \$10 for the immunization clinic visit at County Public Health Centers, but the fee can be waived for those who cannot afford it.

For a list of locations providing routine influenza immunizations in San Diego, individuals can visit sdiz.org or call 2-1-1. For further information about the recent MMWR study, go to:

[Influenza-Related Hospitalizations and Poverty Levels — United States, 2010–2012](#)

Table 2. Influenza Detections Reported, FY 2015-16*

Positive Test Type/Subtype	Week 6	Total To-Date
Influenza A†	402	1,042
Influenza A(H1N1) Pandemic 2009	18	69
Influenza A (H3) Seasonal	6	59
Influenza B†	183	590
Influenza B/Victoria	1	17
Influenza B/Yamagata	2	18
Influenza A/B†	4	17
Total	616	1,812

* FY is July 1- June 30.

† No further characterization performed, or results were not yet available at time of publication.

Note: Totals may change due to further laboratory findings.

Influenza Watch

Figure 1. Percent of Emergency Department Visits for Influenza-like Illness by Week and FY

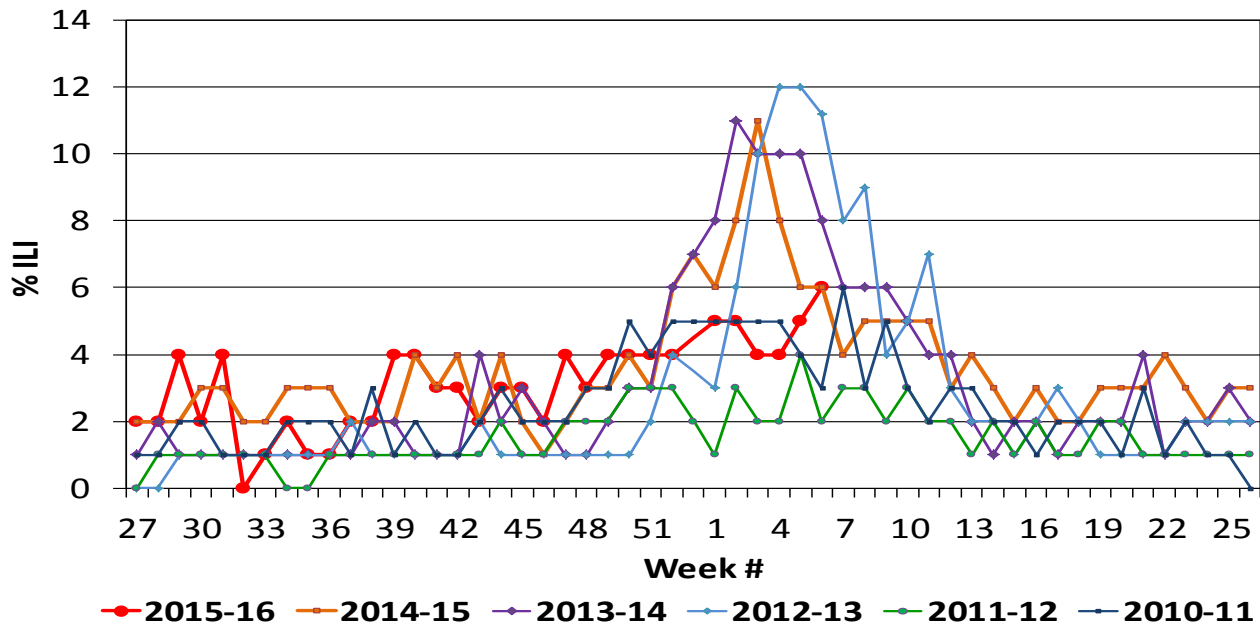
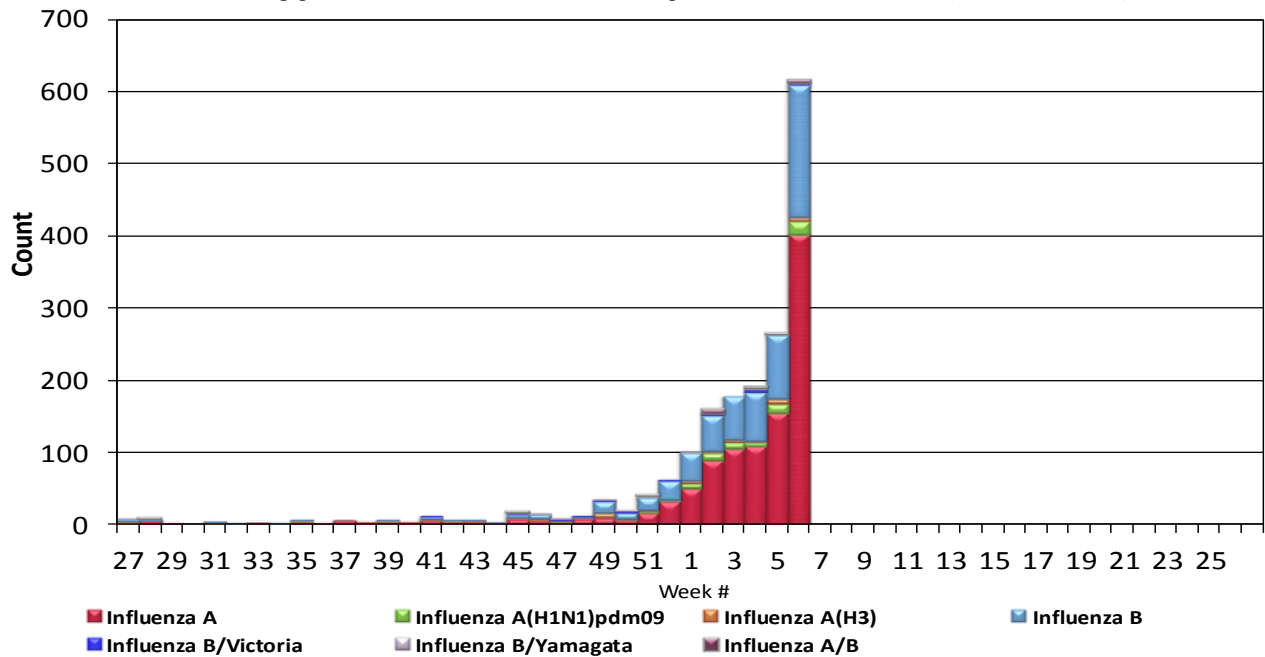


Figure 2. San Diego County Influenza Detections by Type and Week of Report, 2015-16 (N=1,812)



Influenza Watch

Figure 3. Percent of Reported Influenza Cases by Age Group and Season, 2009-10 to 2015-16 YTD

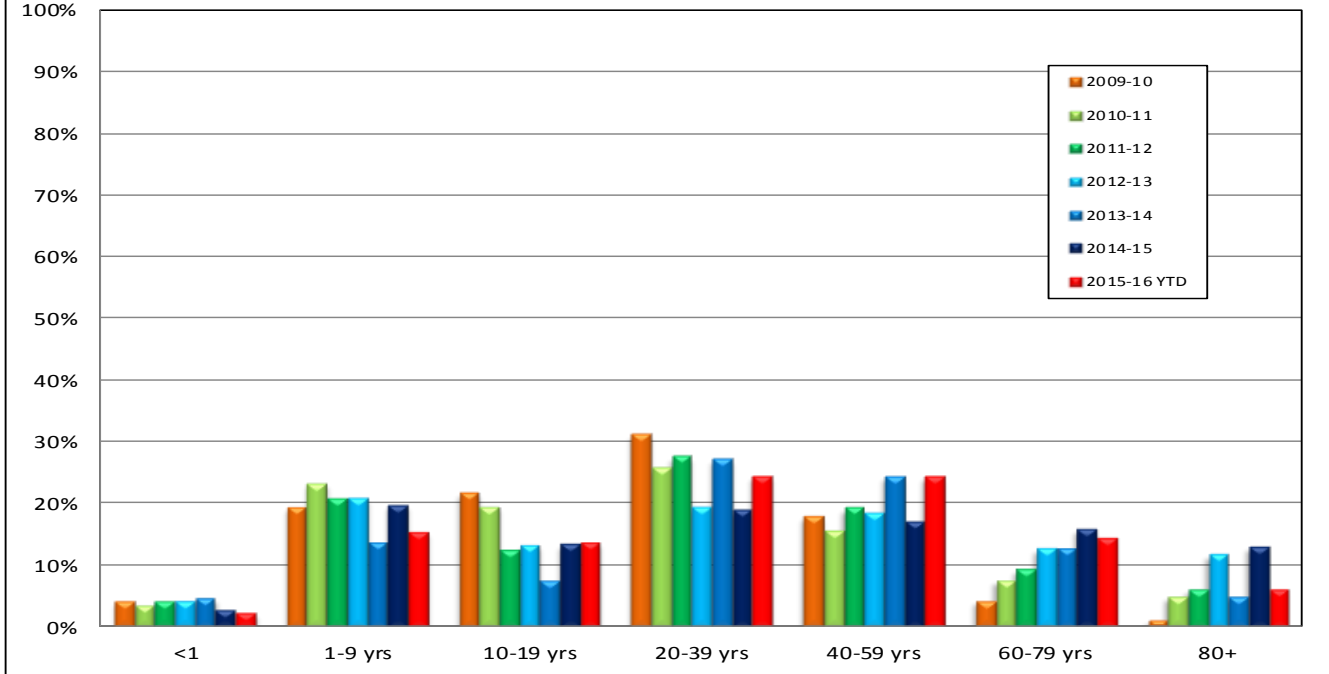
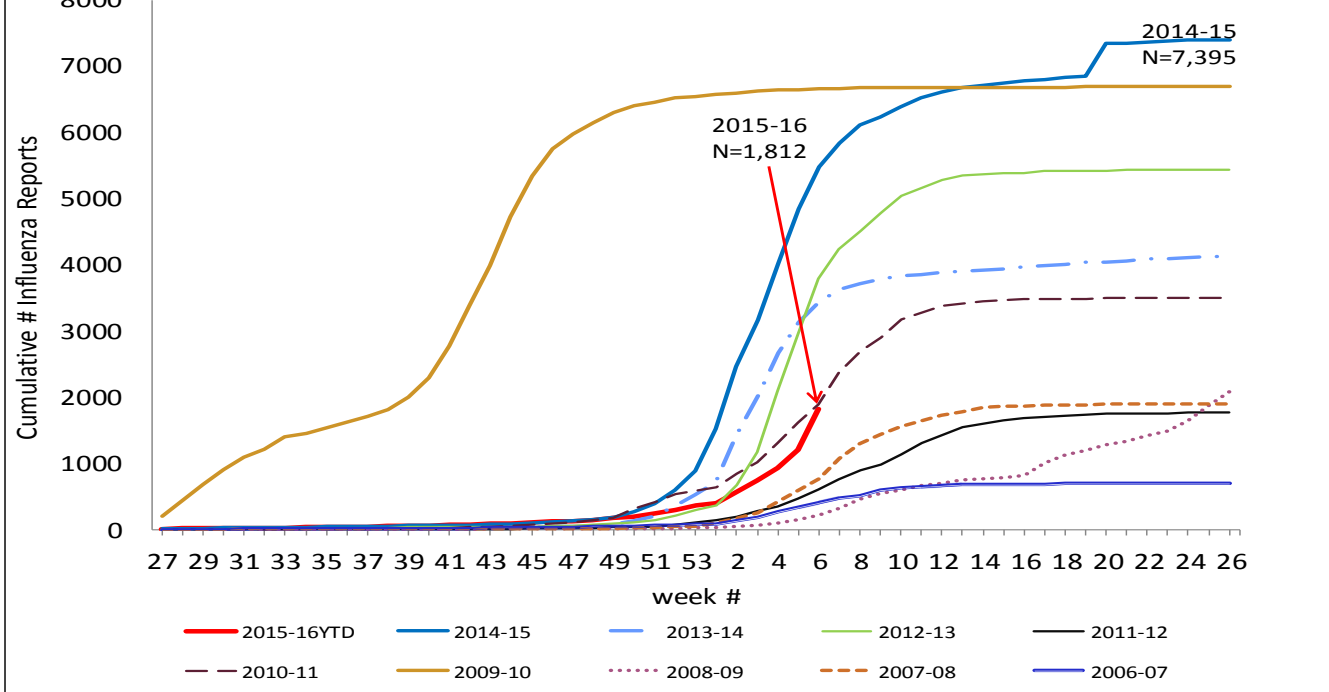


Figure 4. Cumulative Influenza Case Reports by Week & Season



Influenza Watch

Figure 5. Percent of San Diego County Emergency Department Visits for Influenza-like-Illness by Week and FY Compared to 5-Year Baseline & Upper 95% Threshold Values (Serfling Method)

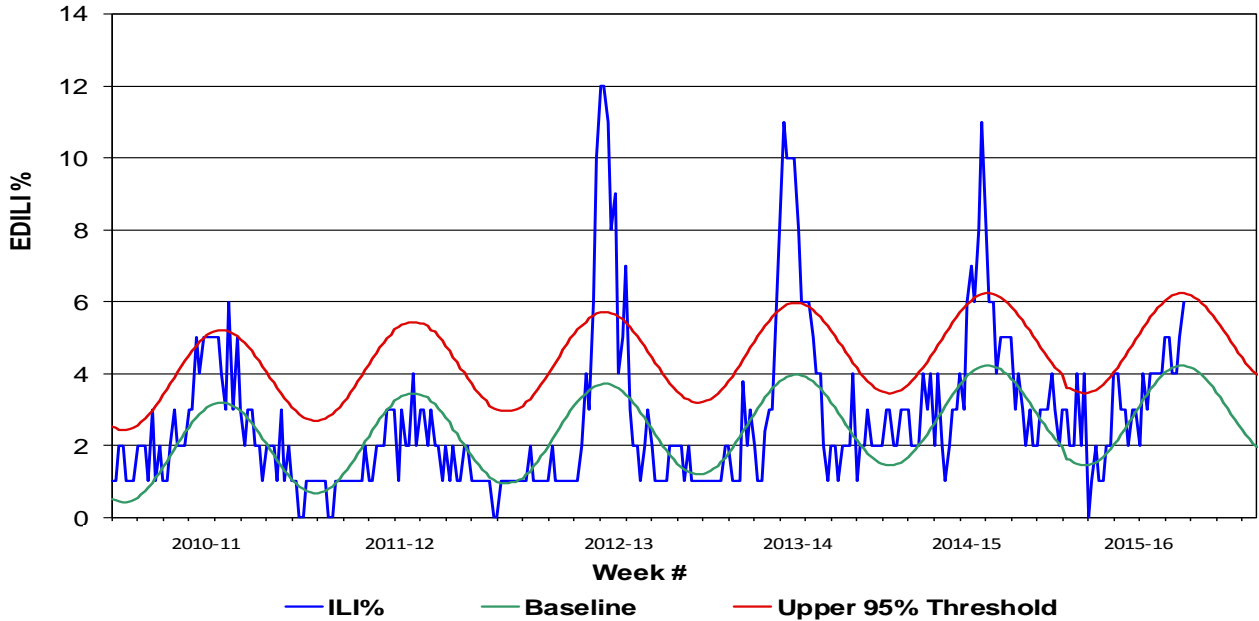
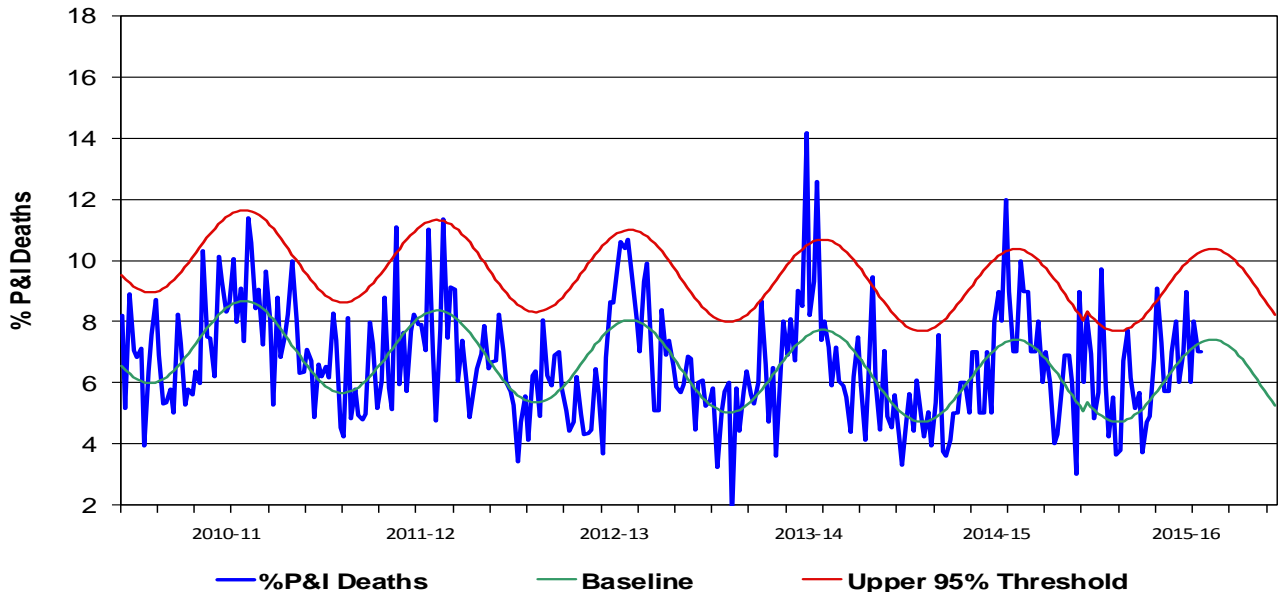


Figure 6. Percent of All San Diego County Deaths Registered with Pneumonia and/or Influenza by Week and FY Compared to Prior 5-Year Baseline & Upper 95% Threshold (Serfling Method)



Influenza Watch

Figure 7. Influenza Deaths by Type, and Season

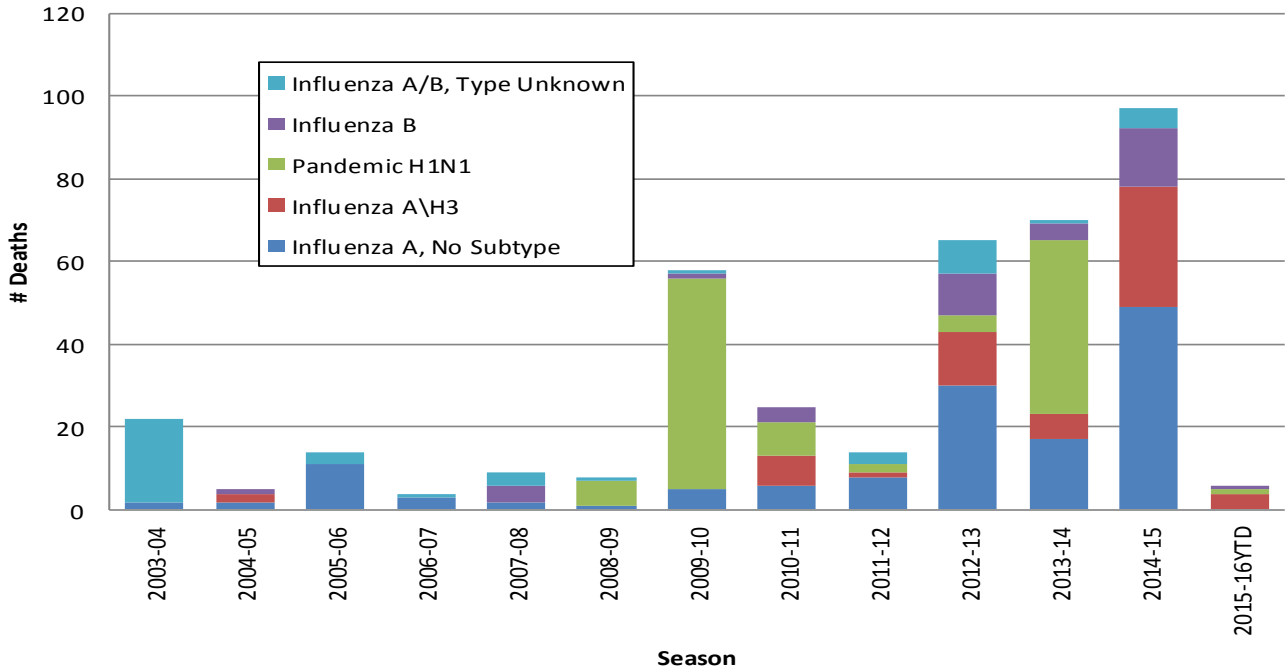
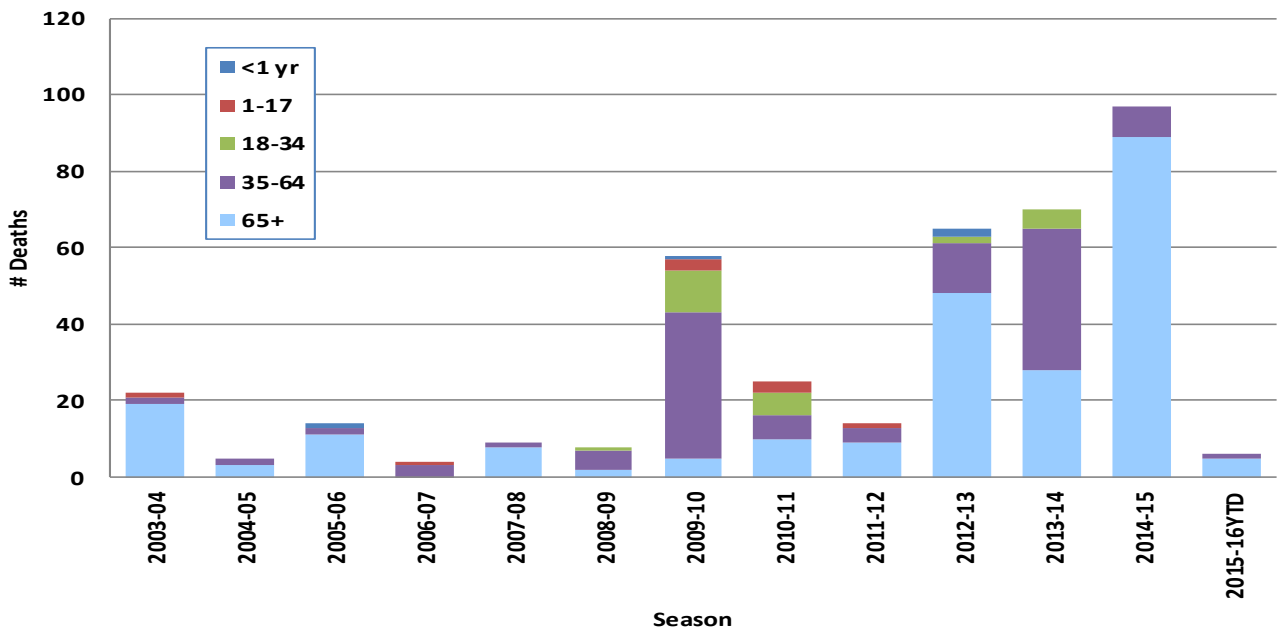
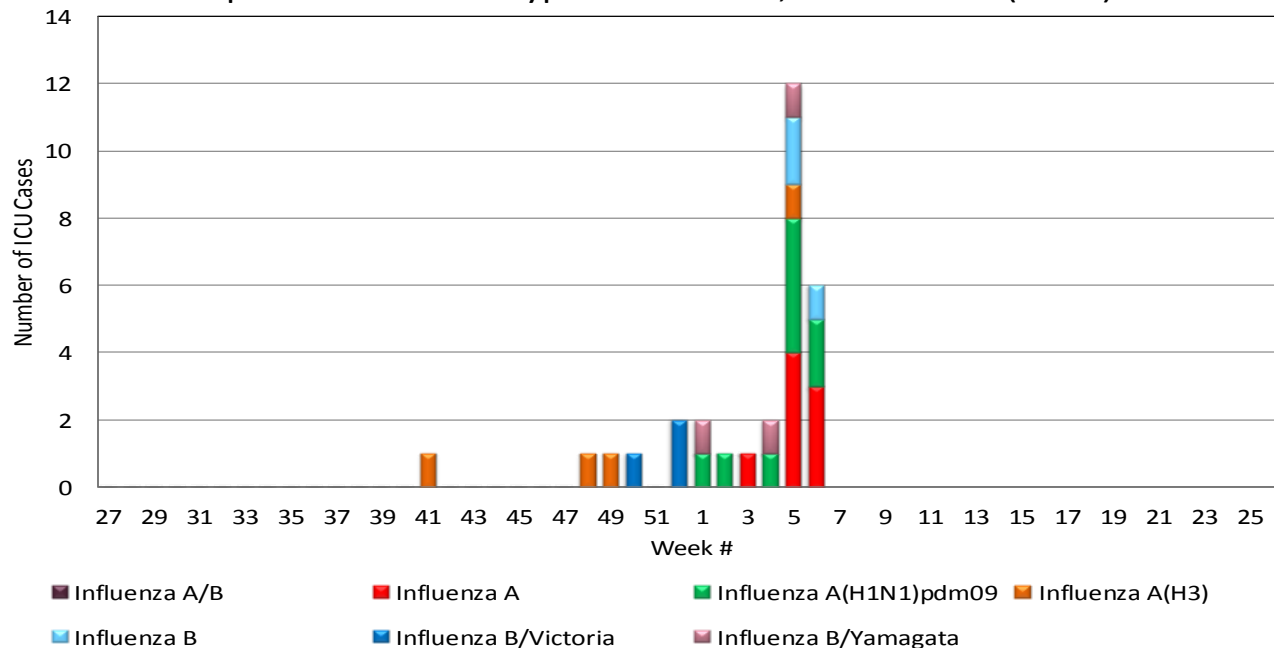


Figure 8. Influenza Deaths by Age and Season



Influenza Watch

Figure 9. Number of Influenza Cases Requiring ICU Care by Episode Week and Type of Influenza, 2015-16 YTD (N=30)



Episode Week is the Week of Onset, or earliest available date in which the case is identified.

Influenza Reporting in San Diego County

Local providers are encouraged to report laboratory positive influenza detections to the County Epidemiology Program by **FAX (858) 715-6458**. Please fax a [Case Report](#) Form and/or a printed laboratory result, and indicate if patient was admitted to ICU or died, and/or is a resident of a congregate living facility.

For questions regarding sending specimens to Public Health Laboratory (PHL), call (619) 692-8500. Click here for the updated PHL [PCR Test Request Form](#). Contact Epidemiology with any questions at **(619) 692-8499** or by email to: EpiDiv.HHSA@sdcounty.ca.gov.

Resources

County of San Diego Immunization Branch www.sdiz.org

California Department of Public Health [Influenza](#)

CDC Influenza Surveillance [Weekly Report](#)