



INFLUENZA WATCH

The purpose of the weekly *Influenza Watch* is to summarize current influenza surveillance in San Diego County. **Please note that reported weekly data are preliminary and may change due to delayed submissions and additional laboratory results.**

Report Contents

- Page 1: Overview & Indicators
- Page 2: Virus Characteristics
- Pages 3-7: Trend graphs
- Page 7: Reporting Information

Current Week

Current Week 51 (ending 12/26/2015)

- 43 new influenza detections reported: *Expected level*
- 4% influenza-like illness (ILI) among emergency department visits: *Expected level*
- 1 influenza-related death reported this week
- 8% of deaths registered with pneumonia and/or influenza: *Expected level*

Current Season Summary

245
Total Cases

5
ICU Cases

3
Deaths

0
Outbreaks

Virus Characteristics

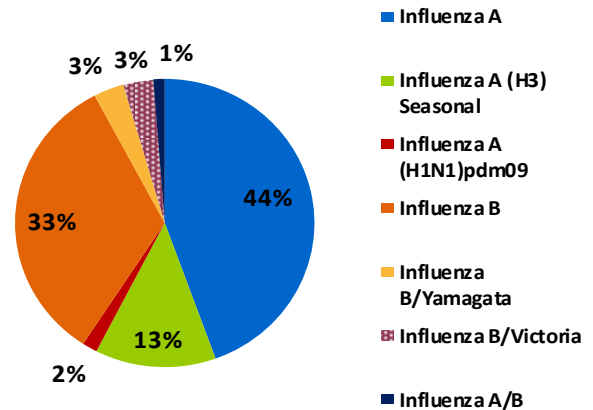


Table 1. Influenza Surveillance Indicators

Indicator	FY 2015-16*			FY 2014-15		Prior 3-Year Average**	
	Week 51	Week 50	FYTD#	Week 51	FYTD#	Week 51	FYTD#
All influenza detections reported (rapid or PCR)	43	23	245	124	392	79	245
Percent of emergency department visits for ILI	4%	4%		3%		3%	
Percent of deaths registered with pneumonia and/or influenza	8%	7%		5%		6%	
Number of influenza-related deaths reported^	1	0	3	0	0	0	0.3

* FYTD=Fiscal Year To Date (FY is July 1- June 30, Weeks 27-26). Total deaths reported in prior years: 97 in 2014-15, 70 in 2013-14, 65 in 2012-13.

* Previous weeks case counts or percentages may change due to delayed processing or reporting.

** Includes FYs 2014-15, 2013-14, and 2012-13.

^ Current FY deaths are shown by week of report; by week of death for prior FYs.

Influenza Watch

More People With High-Risk Conditions Need Flu Shots

During annual influenza epidemics, rates of serious illness and death are higher among those who have medical conditions, such as pulmonary disease (including [asthma](#)), [diabetes](#), or [heart disease](#). These conditions place individuals at an increased risk for influenza complications.

A [CDC study, published online this month](#), examined data from the 2012-2013 Behavioral Risk Factor Surveillance System to estimate national and state-specific influenza vaccination coverage among people aged 18–64 years with high-risk conditions. The researchers found that influenza vaccination coverage was 45.4% among adults aged 18–64 years with at least one high-risk condition, compared with 32.9% among those with no high-risk conditions ($p < 0.05$). Among adults aged 18–64 years with multiple conditions (at least two high-risk conditions), vaccination coverage was 53.2%. Coverage was 43.9% for those with pulmonary diseases, 52.7% for those with diabetes, 48.1% for those with heart disease, and 45.0% for those with cancer.

The researchers noted that individuals with high-risk conditions were more likely to receive an influenza vaccine than those with no high-risk conditions, even after controlling for demographic and access-to-care characteristics. However, despite the observed higher vaccination rates and the ongoing influenza vaccination recommendations for adults with high-risk conditions, coverage in this study was below the Healthy People 2020 target of 70%. Primary care providers and subspecialists should ensure routine assessment of vaccination status every fall and winter, and encourage vaccination to people with high-risk conditions. For more information go to:

[Influenza Vaccination Coverage Among People With High-Risk Conditions in the U.S. CDC: People at High Risk of Developing Flu-Related Complications](#)

Table 2. Influenza Detections Reported, FY 2015-16*

Positive Test Type/Subtype	Week 51	Total To-Date
Influenza A†	19	109
Influenza A(H1N1) Pandemic 2009	2	4
Influenza A (H3) Seasonal	0	32
Influenza B†	21	81
Influenza B/Victoria	0	8
Influenza B/Yamagata	0	8
Influenza A/B†	1	3
Total	43	245

* FY is July 1- June 30.

† No further characterization performed, or results were not yet available at time of publication.

Note: Totals may change due to further laboratory findings.

Influenza Watch

Figure 1. Percent of Emergency Department Visits for Influenza-like Illness by Week and FY

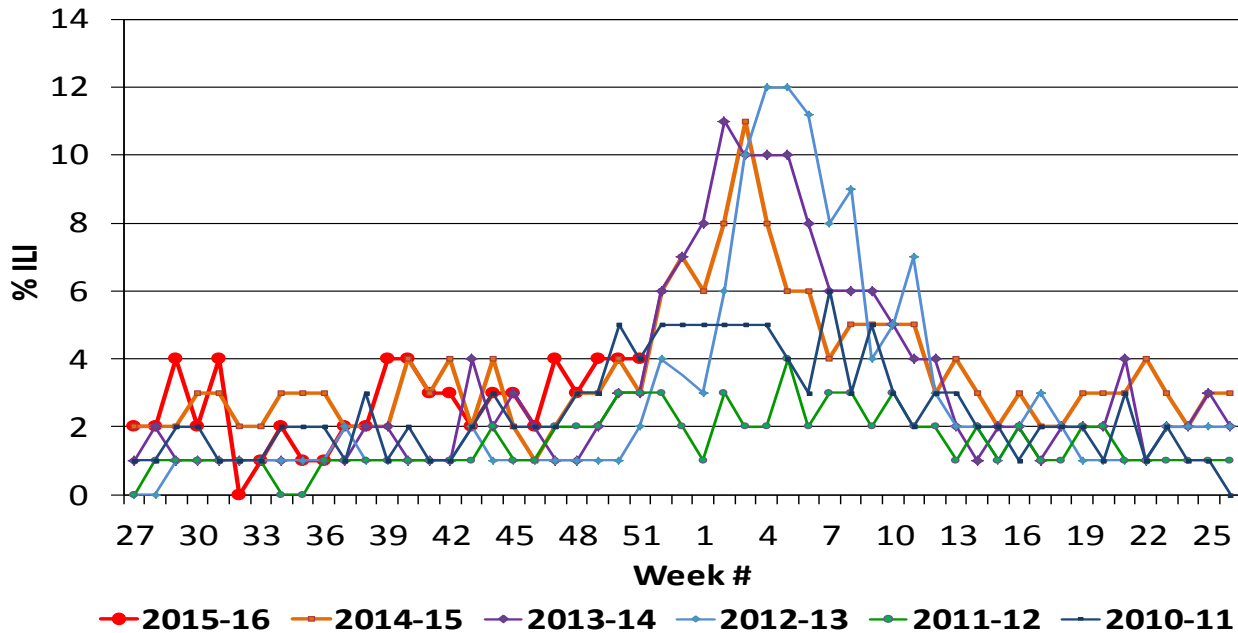
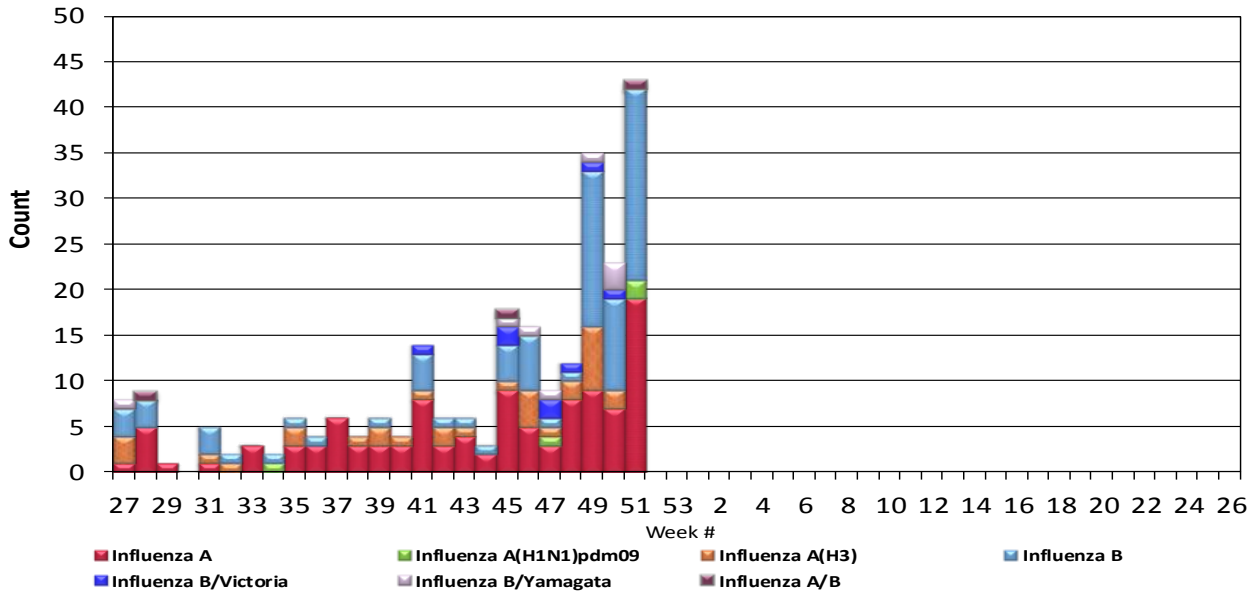


Figure 2. San Diego County Influenza Detections by Type and Week of Report, 2015-16 (N=245)



Influenza Watch

Figure 3. Percent of Reported Influenza Cases by Age Group and Season, 2009-10 to 2015-16 YTD

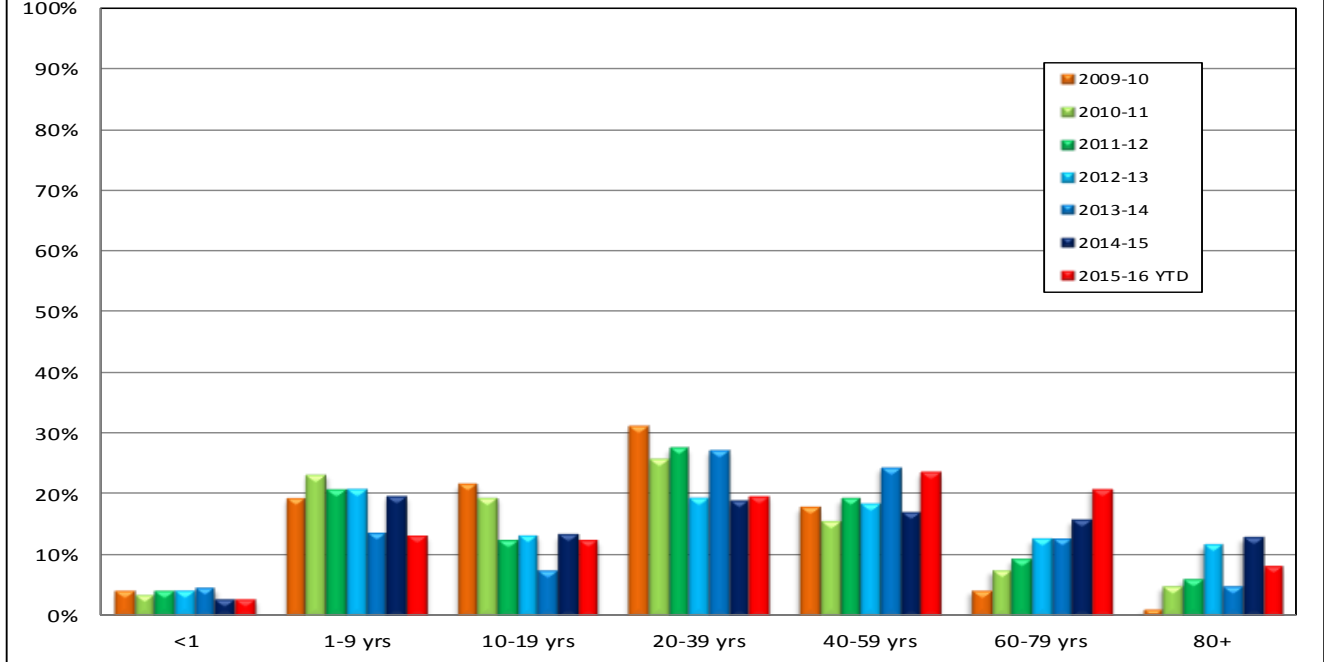
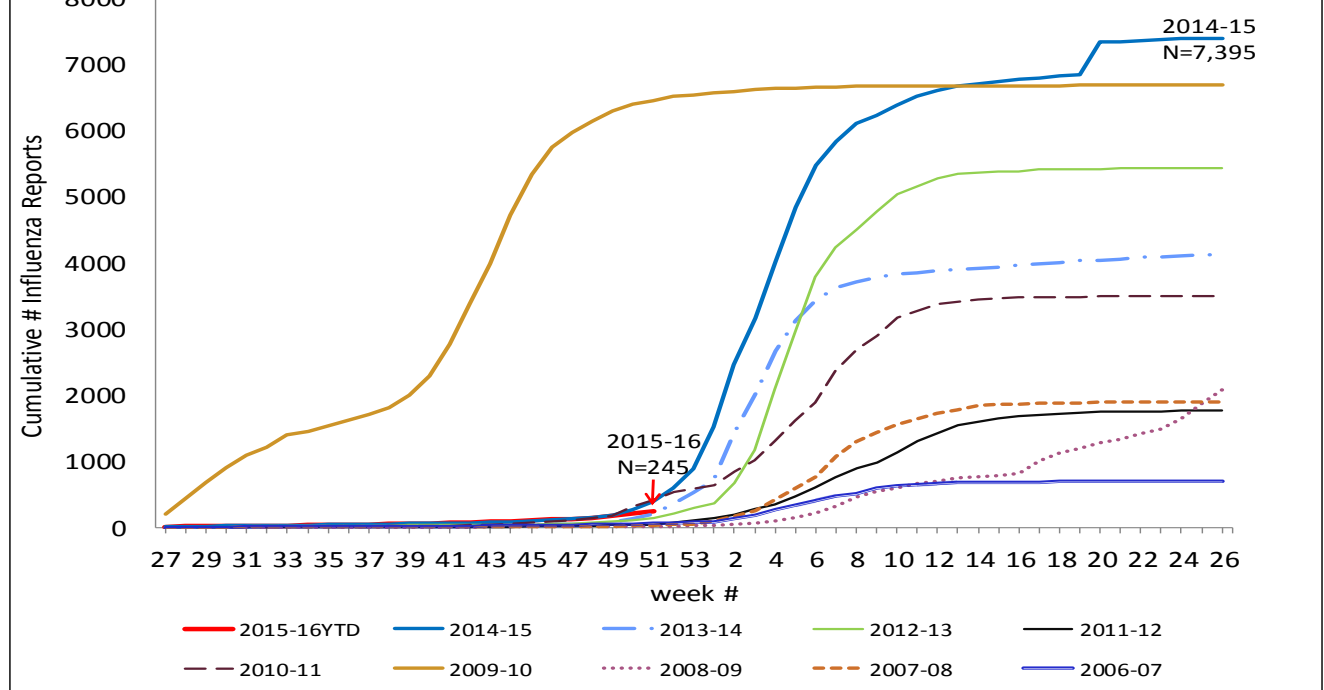


Figure 4. Cumulative Influenza Case Reports by Week & Season



Influenza Watch

Figure 5. Percent of San Diego County Emergency Department Visits for Influenza-like Illness by Week and FY Compared to 5-Year Baseline & Upper 95% Threshold Values (Serfling Method)

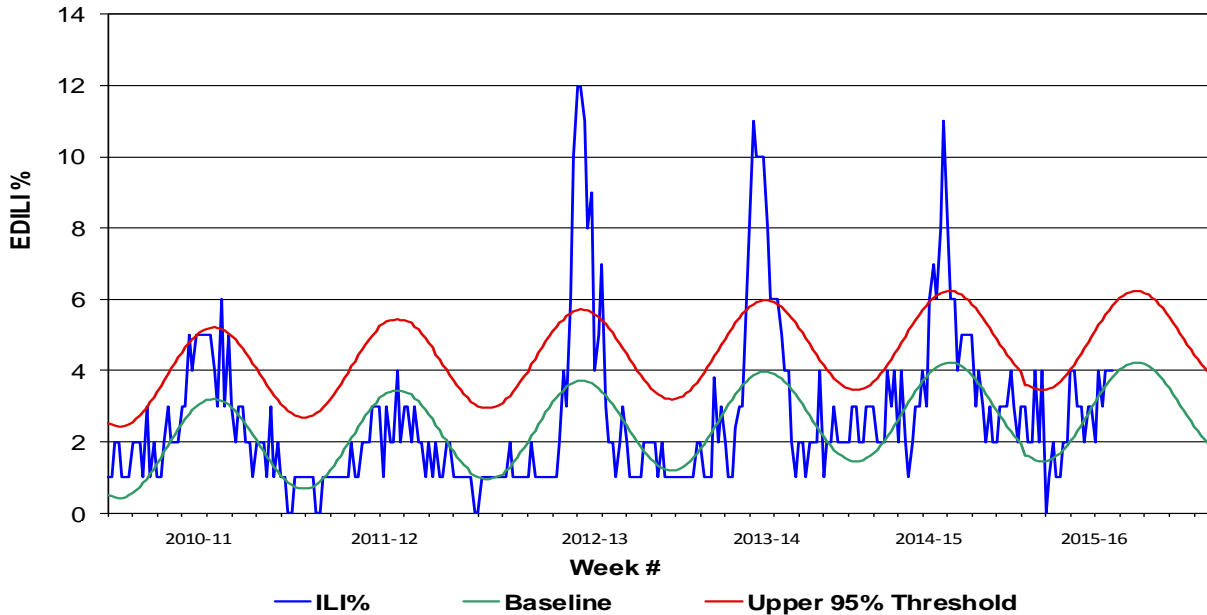
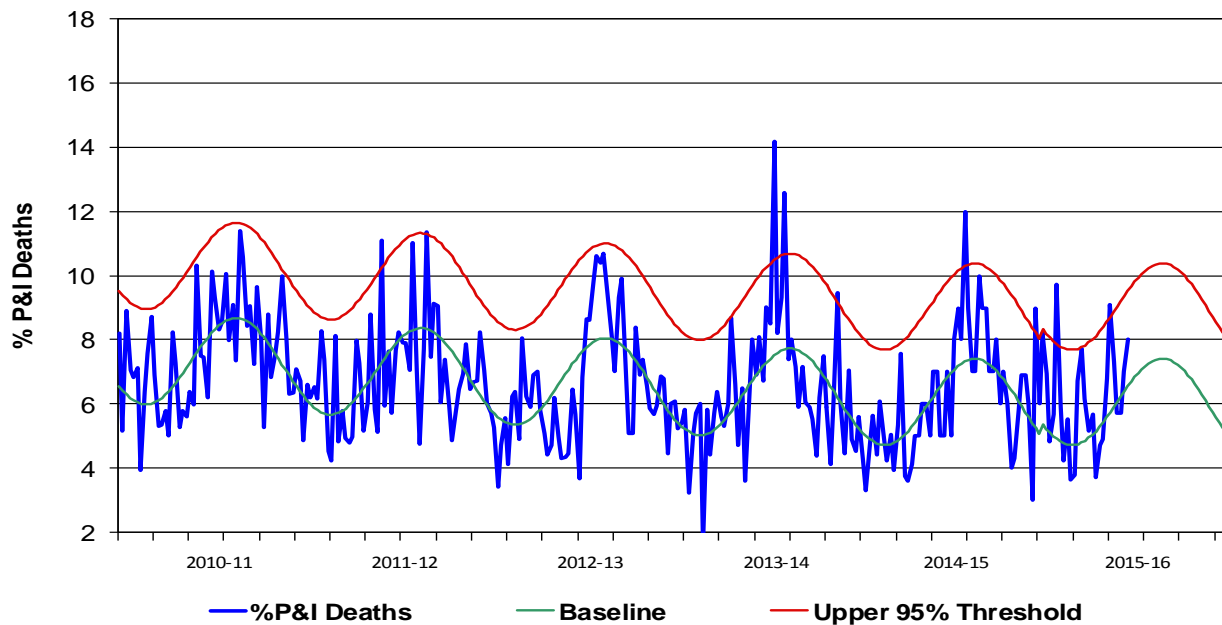


Figure 6. Percent of All San Diego County Deaths Registered with Pneumonia and/or Influenza by Week and FY Compared to Prior 5-Year Baseline & Upper 95% Threshold (Serfling Method)



Influenza Watch

Figure 7. Influenza Deaths by Type, and Season

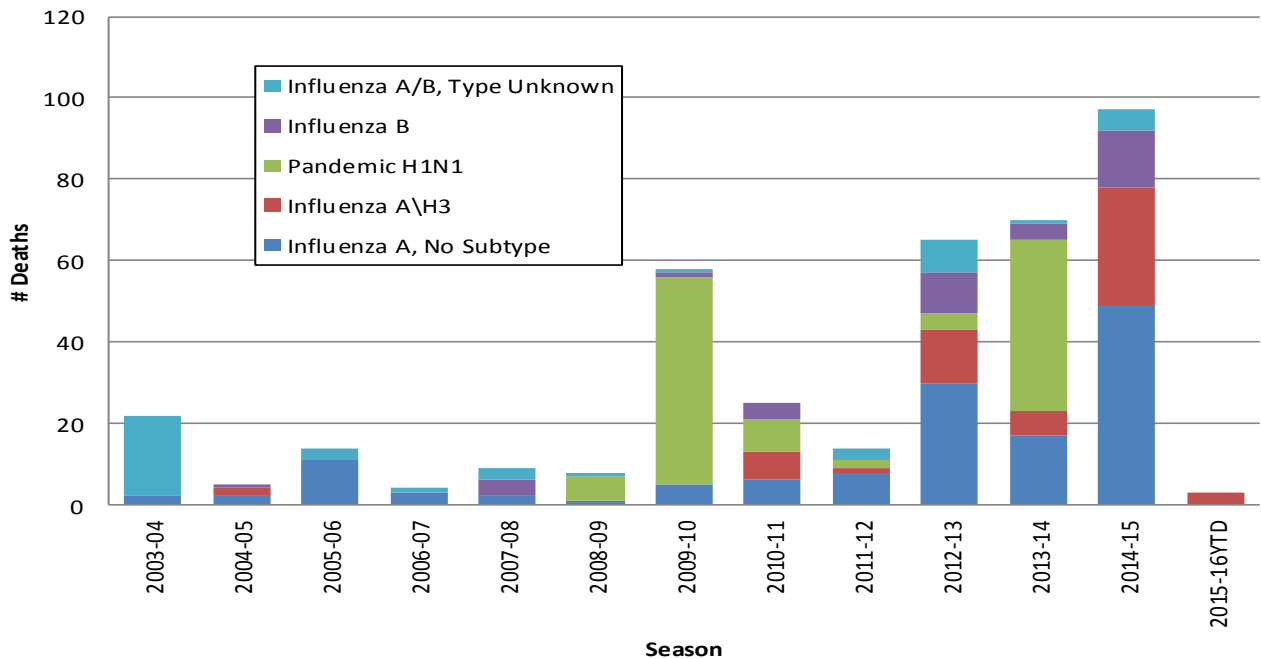


Figure 8. Influenza Deaths by Age and Season

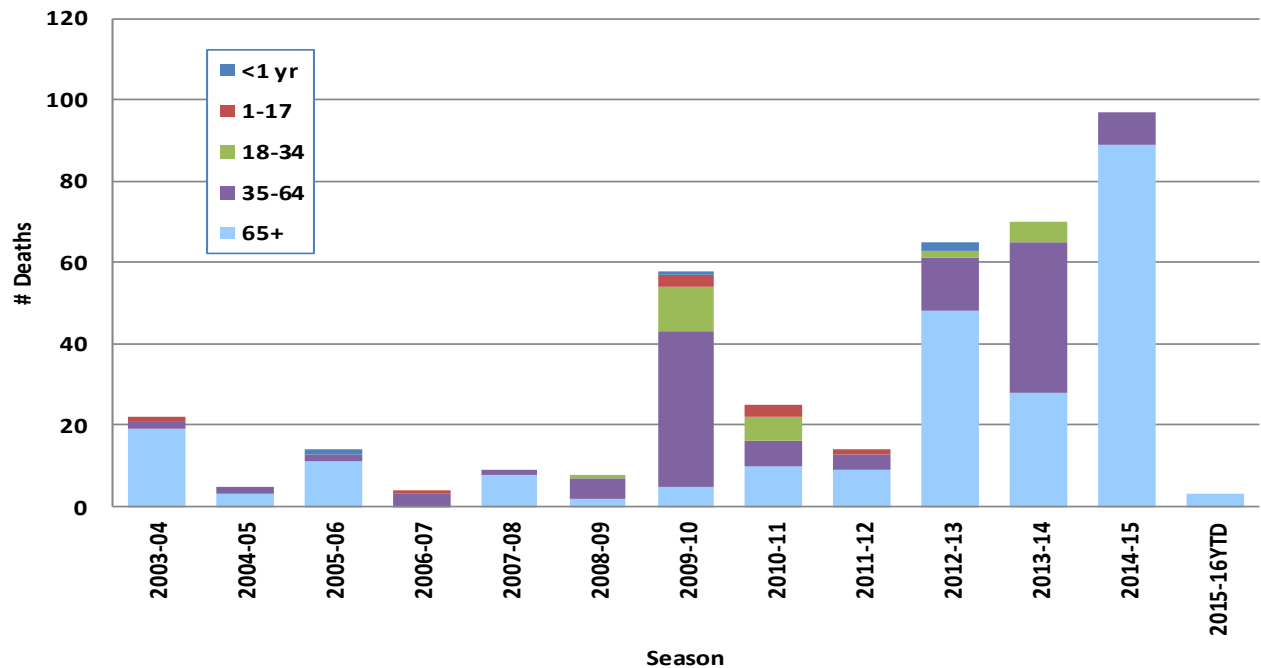
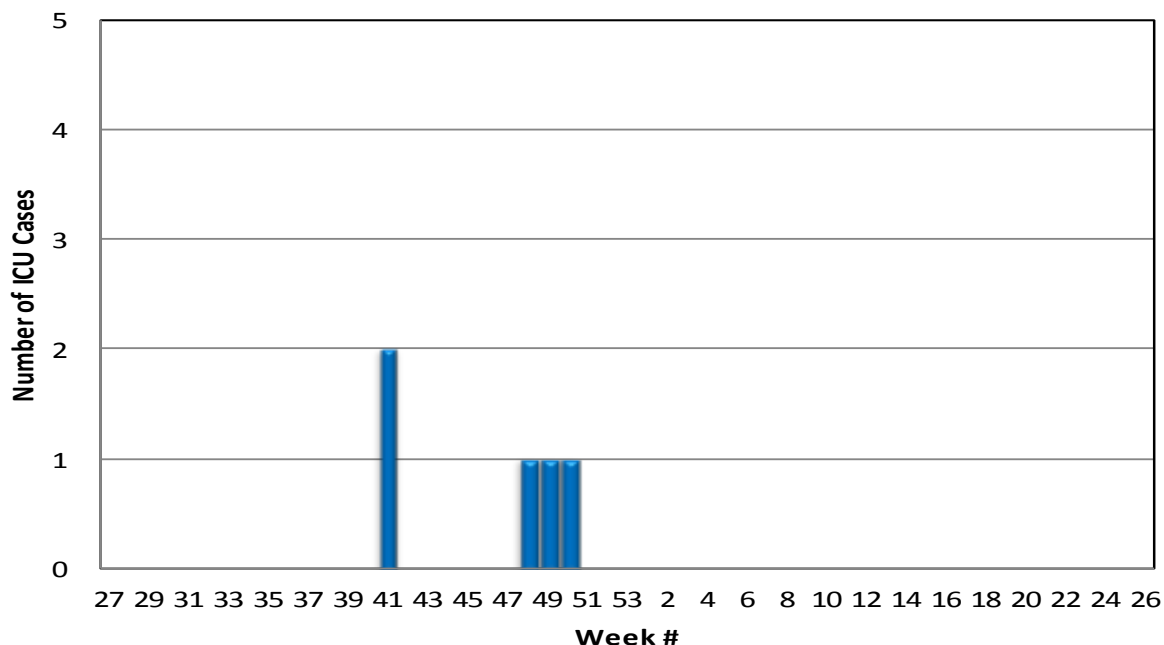


Figure 9. Number of Influenza Cases Requiring ICU Care by Episode Week, 2015-16 YTD (N=5)



Episode Week is the Week of Onset, or earliest available date in which the case is identified.

Influenza Reporting in San Diego County

Local providers are encouraged to report laboratory positive influenza detections to the County Epidemiology Program by **FAX (858) 715-6458**. Please fax a [Case Report Form](#) and/or a printed laboratory result, and indicate if patient was admitted to ICU or died, and/or is a resident of a congregate living facility.

For questions regarding sending specimens to Public Health Laboratory (PHL), call (619) 692-8500. Click here for the updated PHL [PCR Test Request Form](#).

Contact Epidemiology at **(619) 692-8499** or by email to: EpiDiv.HHSA@sdcounty.ca.gov with questions.

Resources

County of San Diego Immunization Branch www.sdiz.org

California Department of Public Health [Influenza](#)

CDC Influenza Surveillance [Weekly Report](#)