



INFLUENZA WATCH

The purpose of the weekly *Influenza Watch* is to summarize current influenza surveillance in San Diego County. **Please note that reported weekly data are preliminary and may change due to delayed submissions and additional laboratory results.**

Report Contents

- Page 1: Overview & Indicators
- Page 2: Virus Characteristics
- Pages 3-7: Trend graphs
- Page 7: Reporting Information

Current Week

Current Week 2 (ending 1/16/2016)

- 144 new influenza detections reported: *Expected level*
- 5% influenza-like illness (ILI) among emergency department visits: *Expected level*
- 0 influenza-related deaths reported this week
- 9% of deaths registered with pneumonia and/or influenza: *Expected level*

Current Season Summary

548
Total Cases

8
ICU Cases

3
Deaths

1
Outbreaks

Virus Characteristics

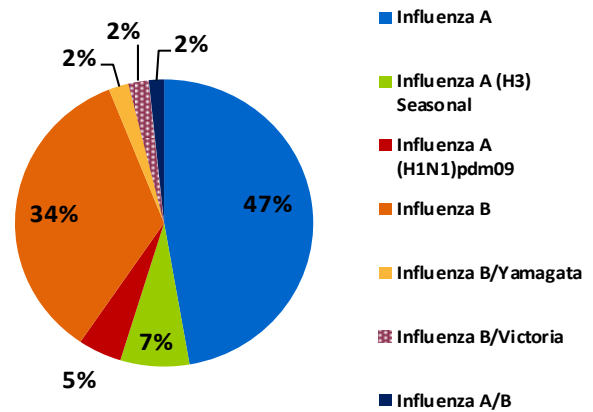


Table 1. Influenza Surveillance Indicators

Indicator	FY 2015-16*			FY 2014-15		Prior 3-Year Average**	
	Week 2	Week 1	FYTD#	Week 2	FYTD#	Week 2	FYTD#
All influenza detections reported (rapid or PCR)	144	105	548	949	2,463	656	1,520
Percent of emergency department visits for ILI	5%	5%		8%		8%	
Percent of deaths registered with pneumonia and/or influenza	9%	7%		8%		8%	
Number of influenza-related deaths reported^	0	0	3	11	17	5.3	10.7

* FYTD=Fiscal Year To Date (FY is July 1- June 30, Weeks 27-26). Total deaths reported in prior years: 97 in 2014-15, 70 in 2013-14, 65 in 2012-13.

* Previous weeks case counts or percentages may change due to delayed processing or reporting.

** Includes FYs 2014-15, 2013-14, and 2012-13.

^ Current FY deaths are shown by week of report; by week of death for prior FYs.

Influenza is Dangerous for Children

Children are especially vulnerable to severe outcomes from influenza infection. Children that are at particularly high risk from flu include:

- Infants 6 months and younger (because vaccination is not approved for this age group, it is critical that their close contacts be vaccinated);
- Children 6 months to 5 years of age; and
- Children 6 months to 18 years with chronic health conditions such as [asthma](#), [heart disease](#), [neurologic conditions](#), [diabetes](#) and those with weakened immune systems or are on long-term aspirin therapy.

Unfortunately, even many healthy children are hospitalized and die from this disease. [In an assessment of the 2012-2013 flu season](#), 40% of the 105 pediatric fatalities across the US had no recognized chronic health condition that would put them at higher risk for developing serious flu-related complications. In addition, the majority of the children that die from flu are not vaccinated against this disease. The same 2012-2013 assessment also revealed that 90% of the pediatric fatalities that season were not vaccinated.

The last pediatric influenza death in San Diego was in 2013, a 5-month-old infant too young to be vaccinated. This highlights the importance of everyone who may be in contact with young infants to have the annual influenza vaccination.

The single best way of protecting children from flu is annual vaccination. Providers should strongly encourage the parents of all children older than 6 months of age to get them vaccinated every year. Resources to encourage parents to vaccinate children against flu are available from the [National Foundation for Infectious Diseases](#).

Table 2. Influenza Detections Reported, FY 2015-16*

Positive Test Type/Subtype	Week 2	Total To-Date
Influenza A†	77	259
Influenza A(H1N1) Pandemic 2009	9	26
Influenza A (H3) Seasonal	3	41
Influenza B†	46	189
Influenza B/Victoria	2	12
Influenza B/Yamagata	1	12
Influenza A/B†	6	9
Total	144	548

* FY is July 1- June 30.

† No further characterization performed, or results were not yet available at time of publication.

Note: Totals may change due to further laboratory findings.

Influenza Watch

Figure 1. Percent of Emergency Department Visits for Influenza-like Illness by Week and FY

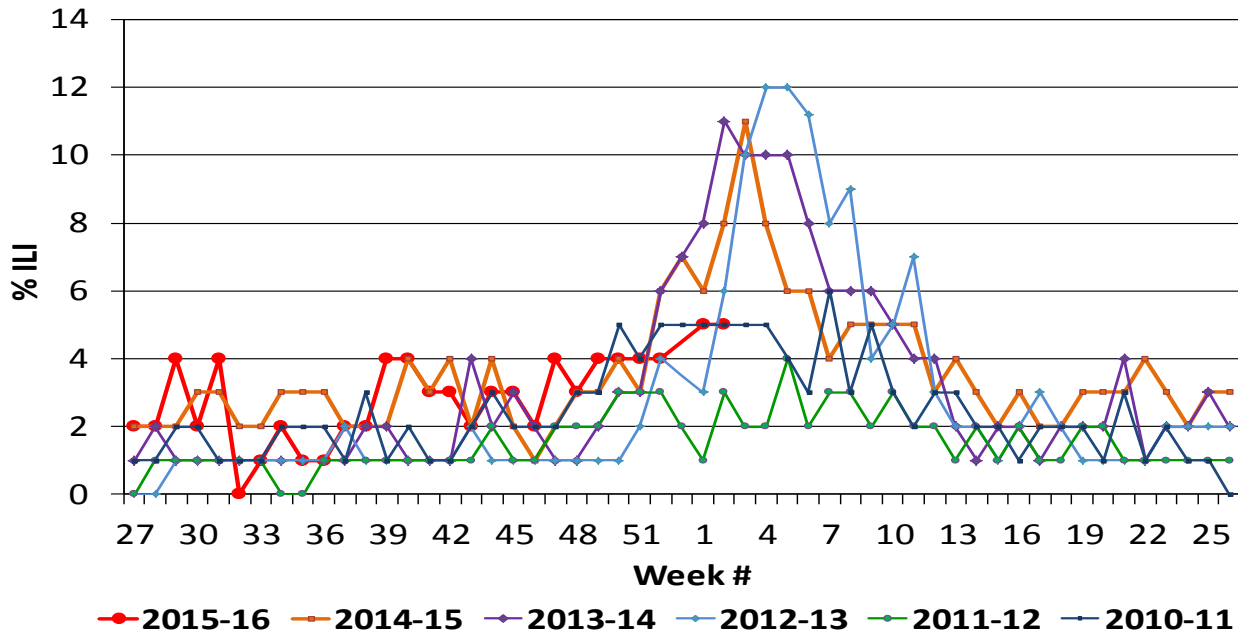
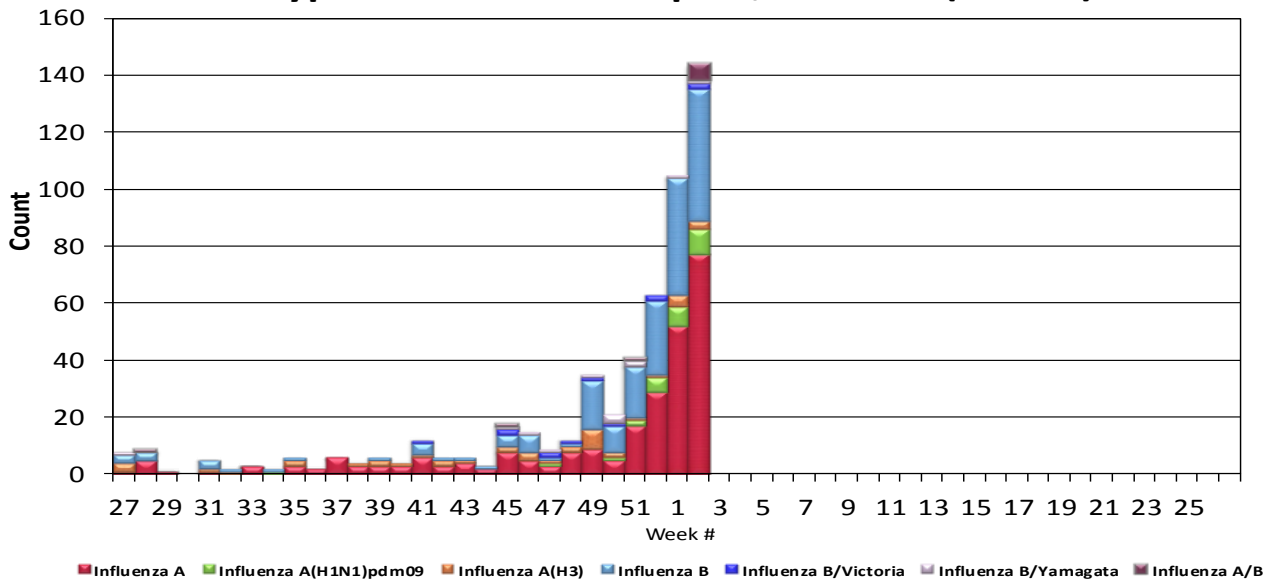


Figure 2. San Diego County Influenza Detections by Type and Week of Report, 2015-16 (N=548)



Influenza Watch

Figure 3. Percent of Reported Influenza Cases by Age Group and Season, 2009-10 to 2015-16 YTD

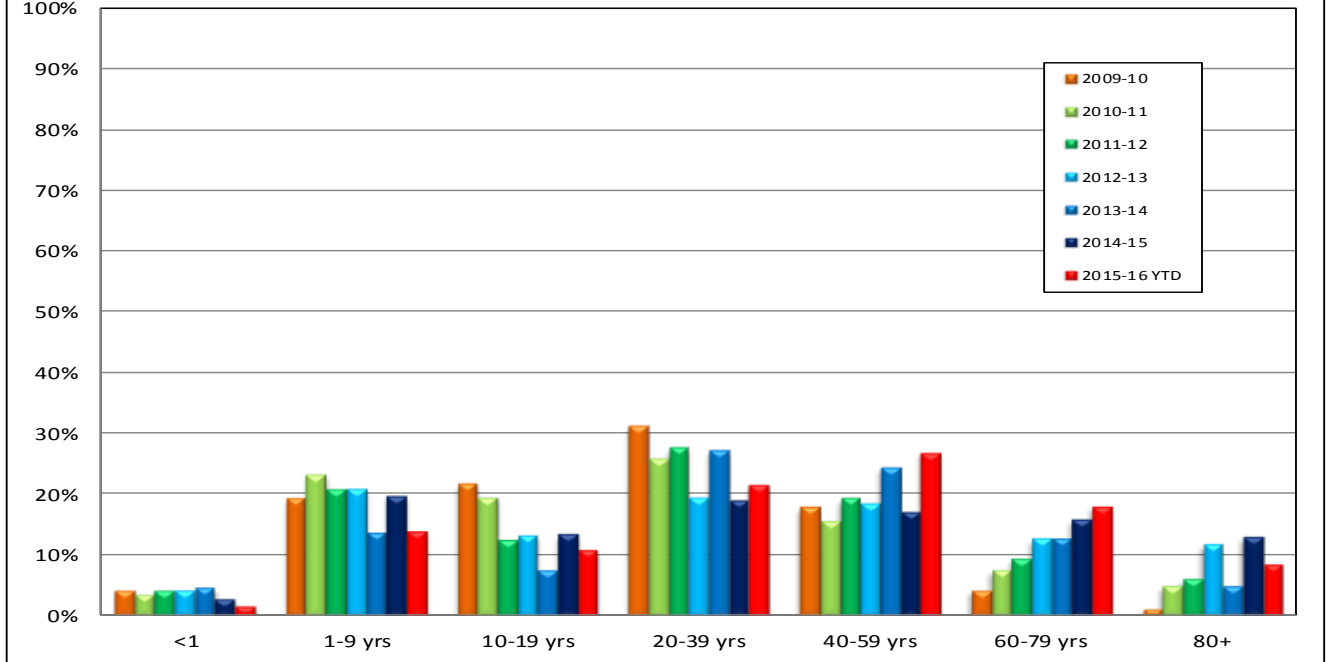
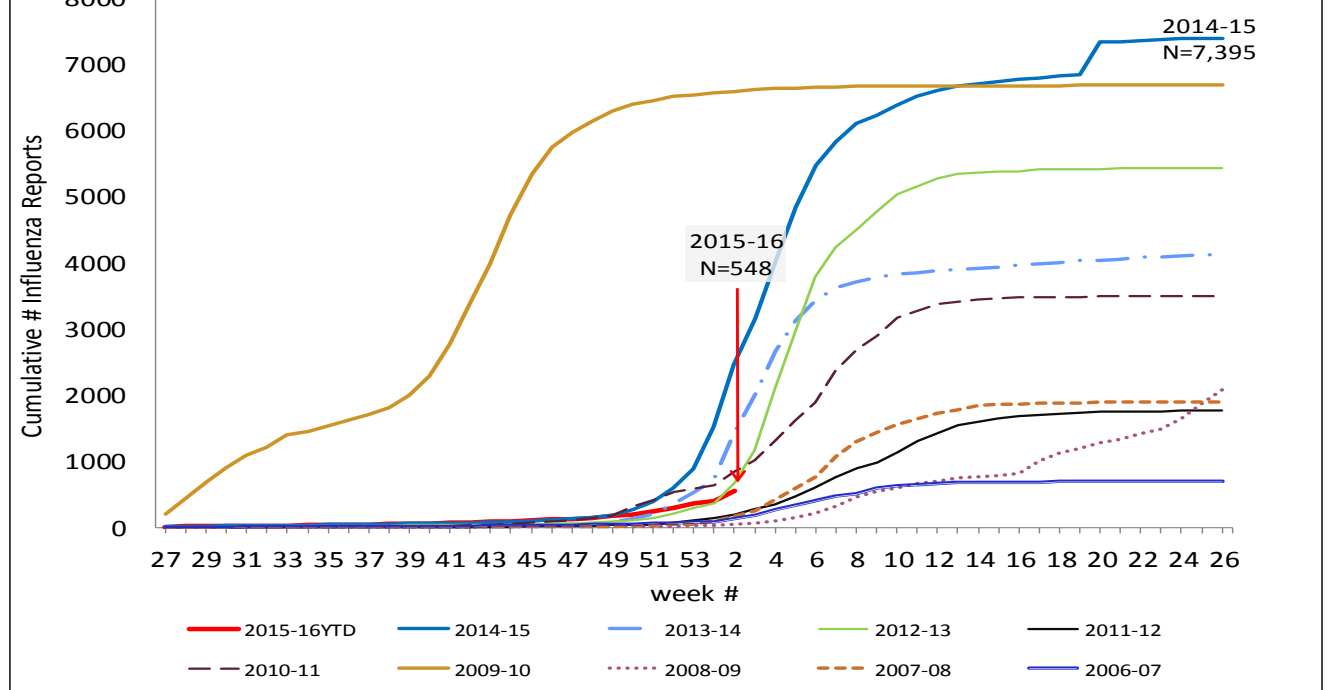


Figure 4. Cumulative Influenza Case Reports by Week & Season



Influenza Watch

Figure 5. Percent of San Diego County Emergency Department Visits for Influenza-like Illness by Week and FY Compared to 5-Year Baseline & Upper 95% Threshold Values (Serfling Method)

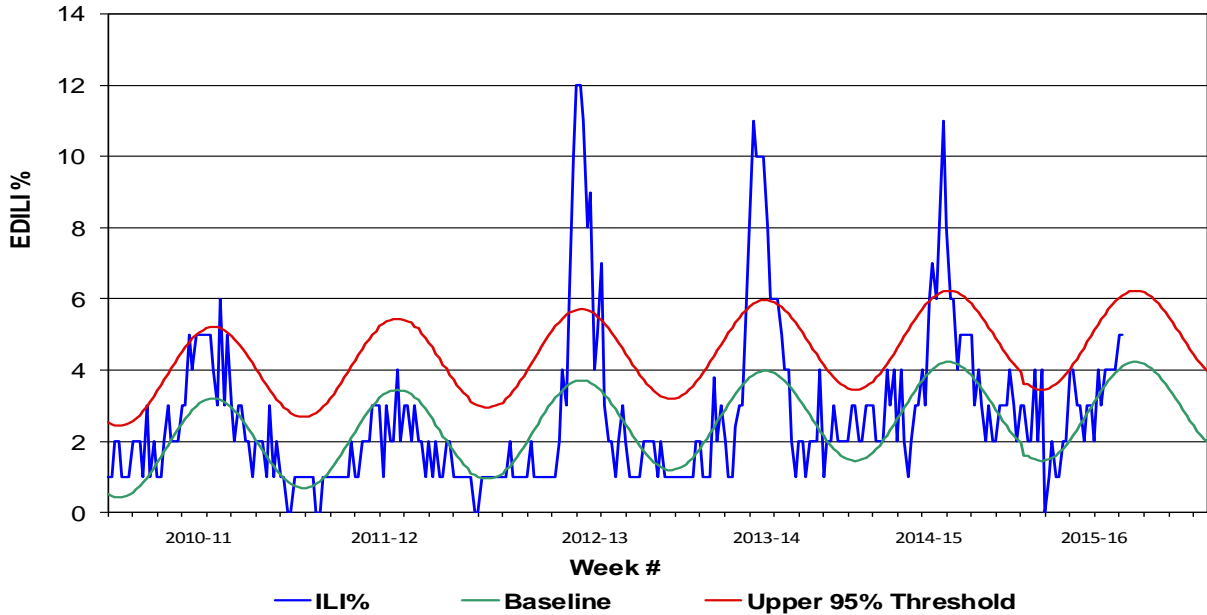
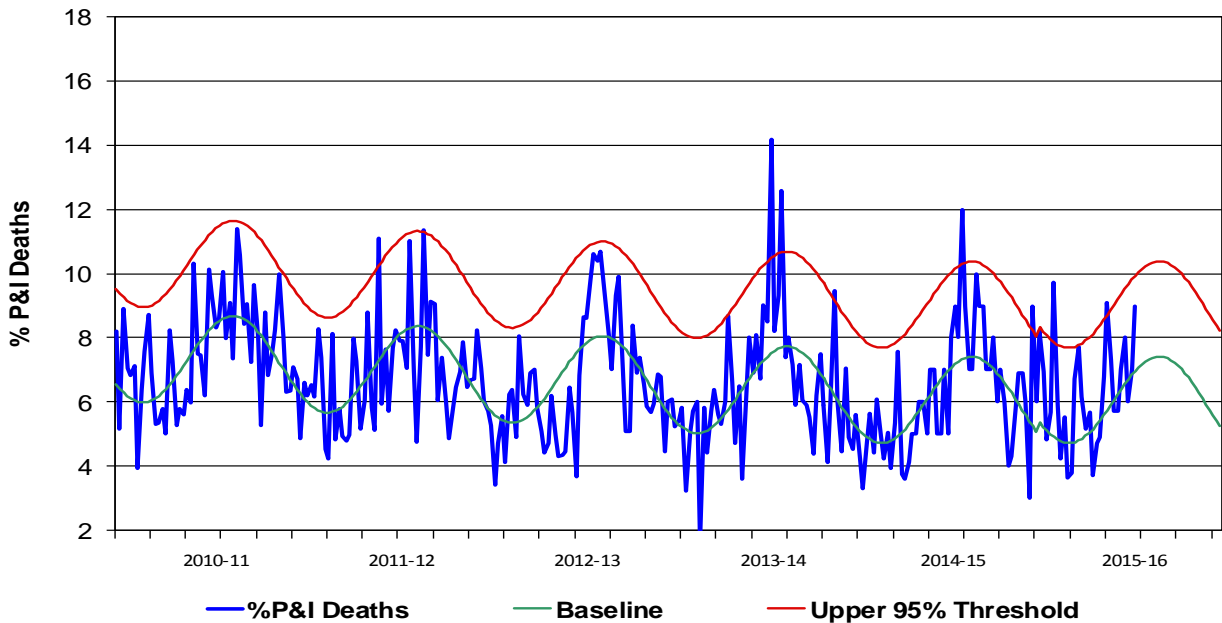


Figure 6. Percent of All San Diego County Deaths Registered with Pneumonia and/or Influenza by Week and FY Compared to Prior 5-Year Baseline & Upper 95% Threshold (Serfling Method)



Influenza Watch

Figure 7. Influenza Deaths by Type, and Season

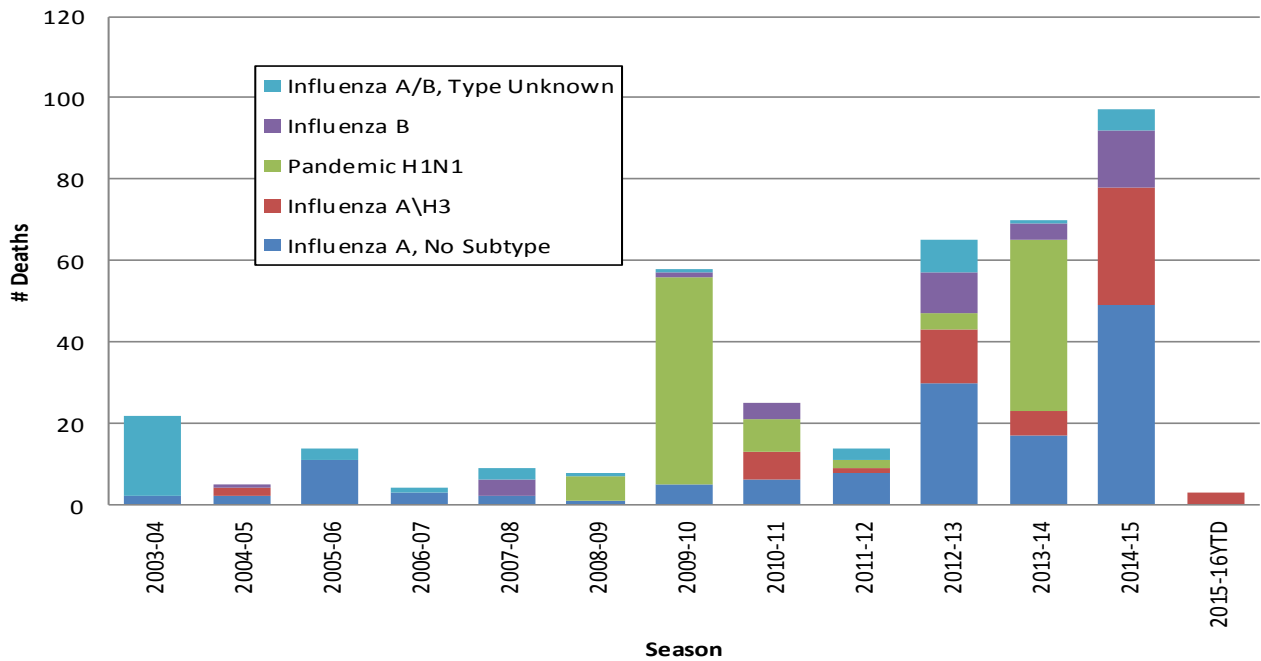


Figure 8. Influenza Deaths by Age and Season

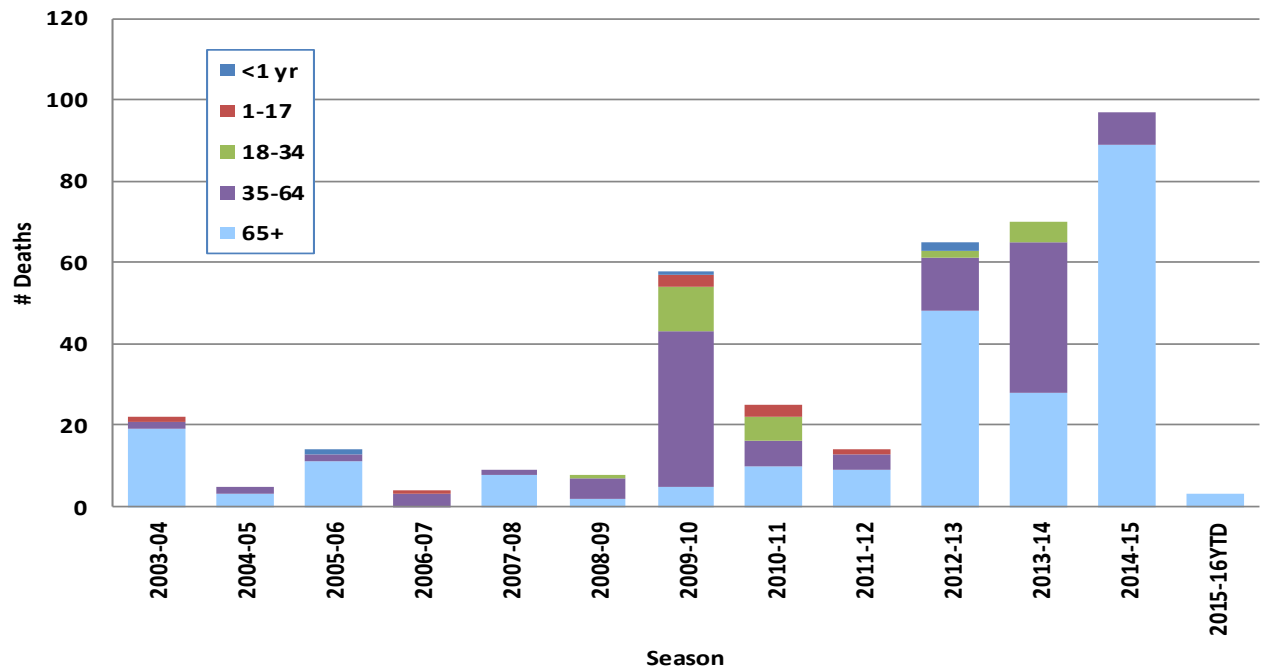
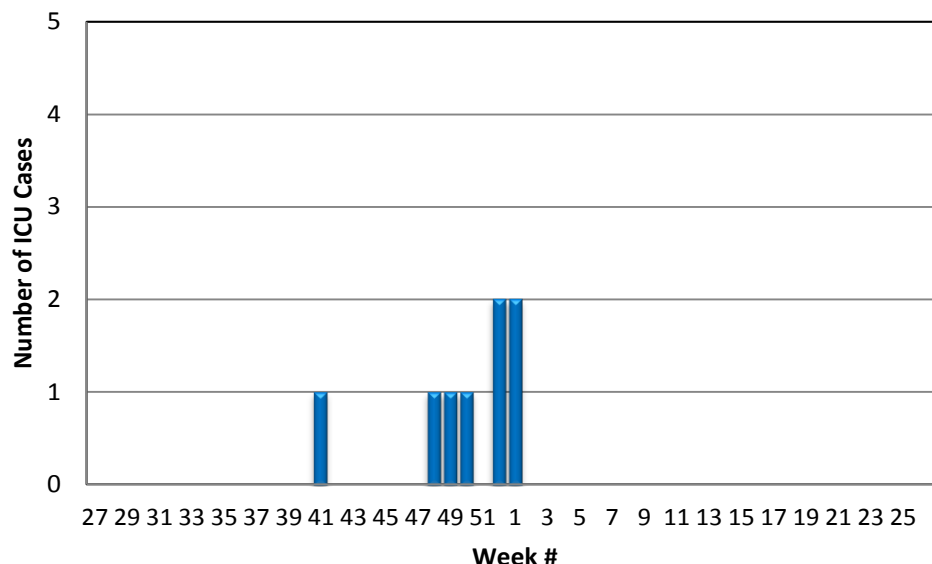


Figure 9. Number of Influenza Cases Requiring ICU Care by Episode Week, 2015-16 YTD (N=8)



Episode Week is the Week of Onset, or earliest available date in which the case is identified.

Influenza Reporting in San Diego County

Local providers are encouraged to report laboratory positive influenza detections to the County Epidemiology Program by **FAX (858) 715-6458**. Please fax a [Case Report Form](#) and/or a printed laboratory result, and indicate if patient was admitted to ICU or died, and/or is a resident of a congregate living facility.

For questions regarding sending specimens to Public Health Laboratory (PHL), call (619) 692-8500. Click here for the updated PHL [PCR Test Request Form](#).

Contact Epidemiology at **(619) 692-8499** or by email to: EpiDiv.HHSA@sdcounty.ca.gov with questions.

Resources

County of San Diego Immunization Branch www.sdiz.org

California Department of Public Health [Influenza](#)

CDC Influenza Surveillance [Weekly Report](#)