

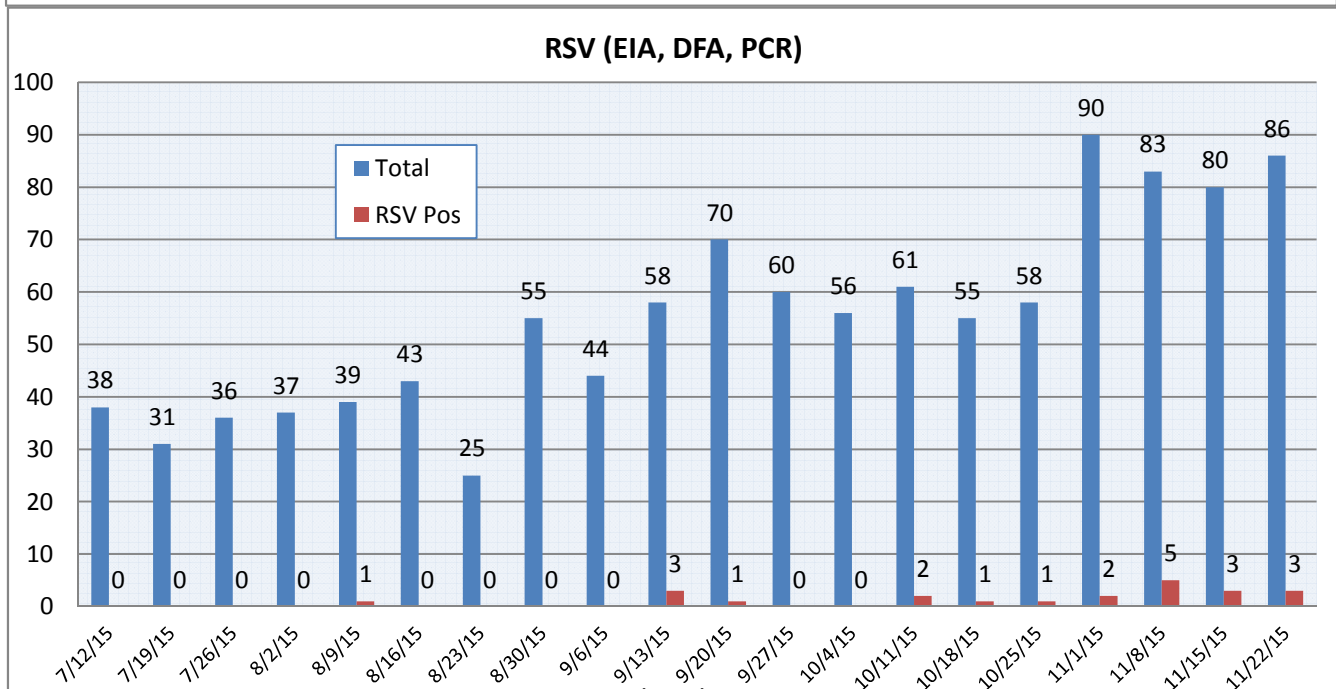
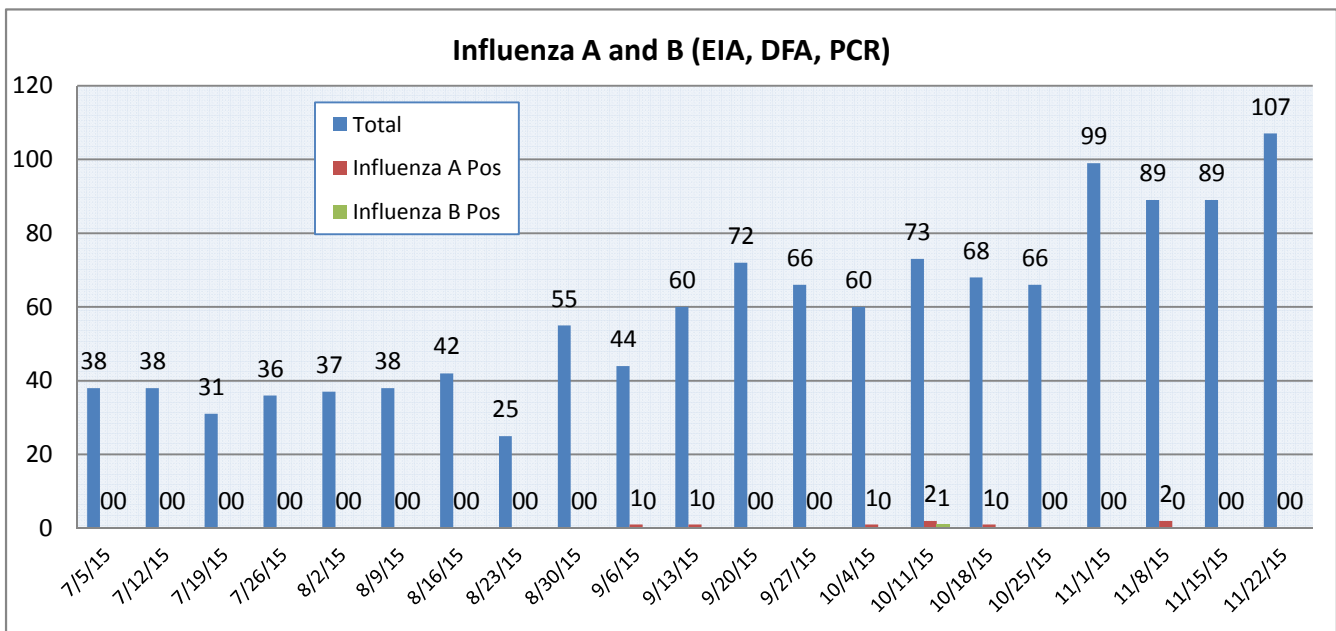
Pathogens Report

The following report is a listing of selected pathogens detected at Rady Children's Hospital. The report includes data from adult and pediatric specimens collected locally.** This information is provided for use by physicians and other health care professionals.

November 16-22, 2015

	Positive Tests Current Week	Total Tests Current Week	Positive Tests YTD*	Total Tests YTD*
RSV (EIA, DFA, and PCR)	3	86	17	513
Influenza A (EIA, DFA, and PCR)	0	107	5	591
Influenza B (EIA, DFA, and PCR)	0		1	
B. pertussis/parapertussis (PCR)	1	102	19	565
**Parainfluenza (PCR and DFA)	5	55	39	274
**Rhinovirus (PCR)	23		89	
**Adenovirus (PCR and DFA)	4		10	
**Metapneumovirus (PCR)	2		7	
Enterovirus, CSF (PCR)	1		12	
		10		78

*Pathogens are tracked from October 5, 2015. **PCR testing performed on RCH inpatients only.

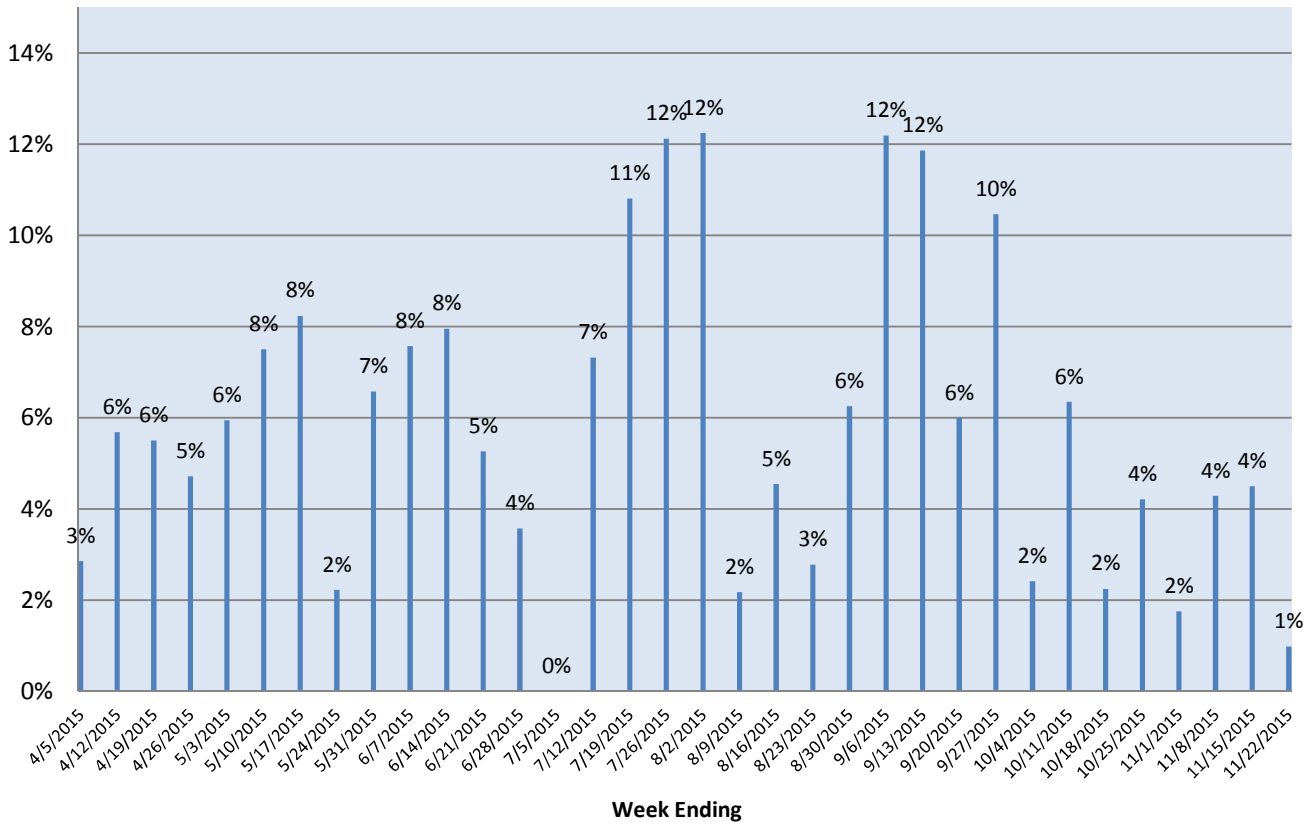


Pathogens Report

Week Ending

Pathogens Report

Bordetella Positive Rate



Enterovirus, CSF (PCR)

