

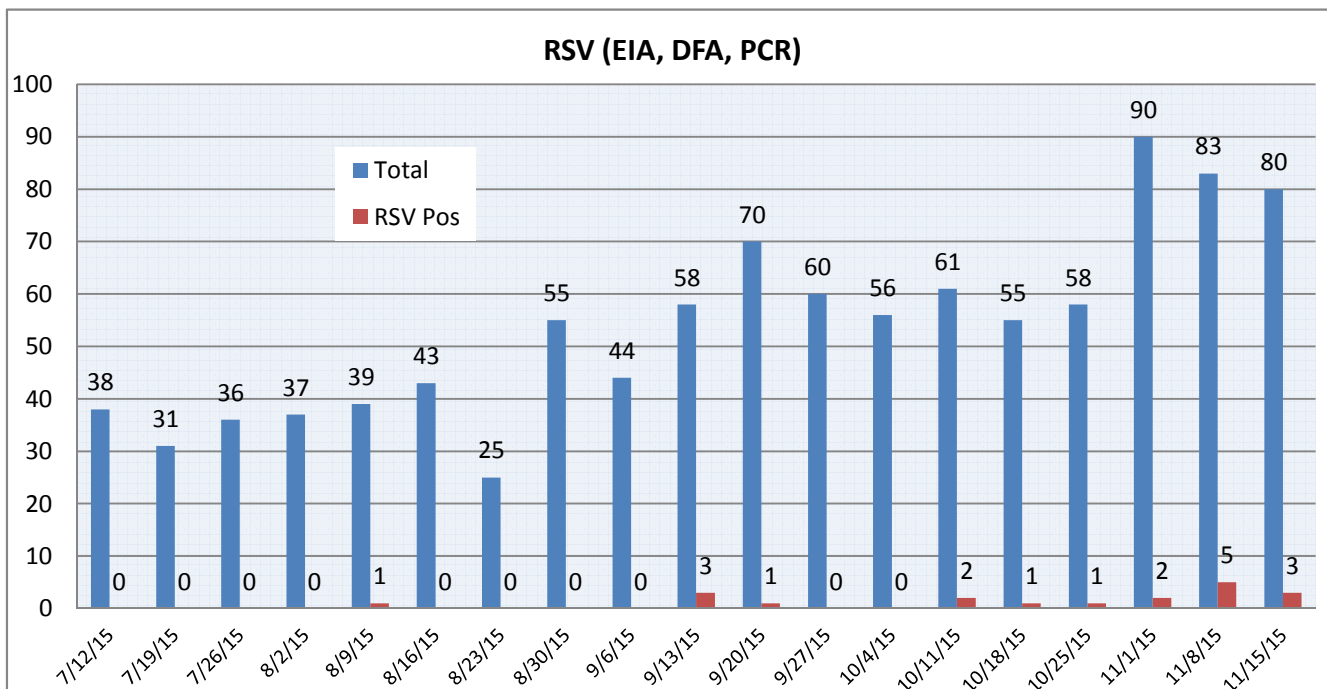
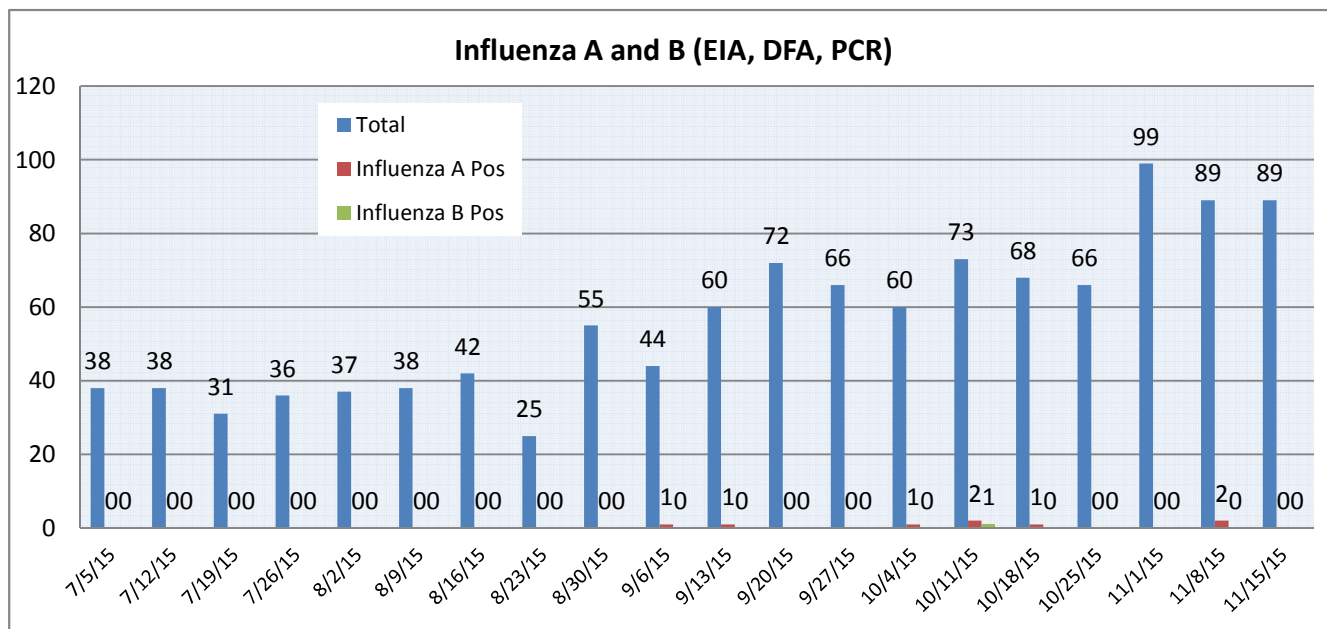
Pathogens Report

The following report is a listing of selected pathogens detected at Rady Children's Hospital. The report includes data from adult and pediatric specimens collected locally. ** This information is provided for use by physicians and other health care professionals.

November 9-15, 2015

	Positive Tests Current Week	Total Tests Current Week	Positive Tests YTD*	Total Tests YTD*
RSV (EIA, DFA, and PCR)	3	80	14	427
Influenza A (EIA, DFA, and PCR)	0	89	5	484
Influenza B (EIA, DFA, and PCR)	0		1	
B. pertussis/parapertussis (PCR)	4	89	18	463
**Parainfluenza (PCR and DFA)	4	46	34	219
**Rhinovirus (PCR)	16		66	
**Adenovirus (PCR and DFA)	1		6	
**Metapneumovirus (PCR)	0		5	
Enterovirus, CSF (PCR)	2		11	
		14		68

*Pathogens are tracked from October 5, 2015. **PCR testing performed on RCH inpatients only.

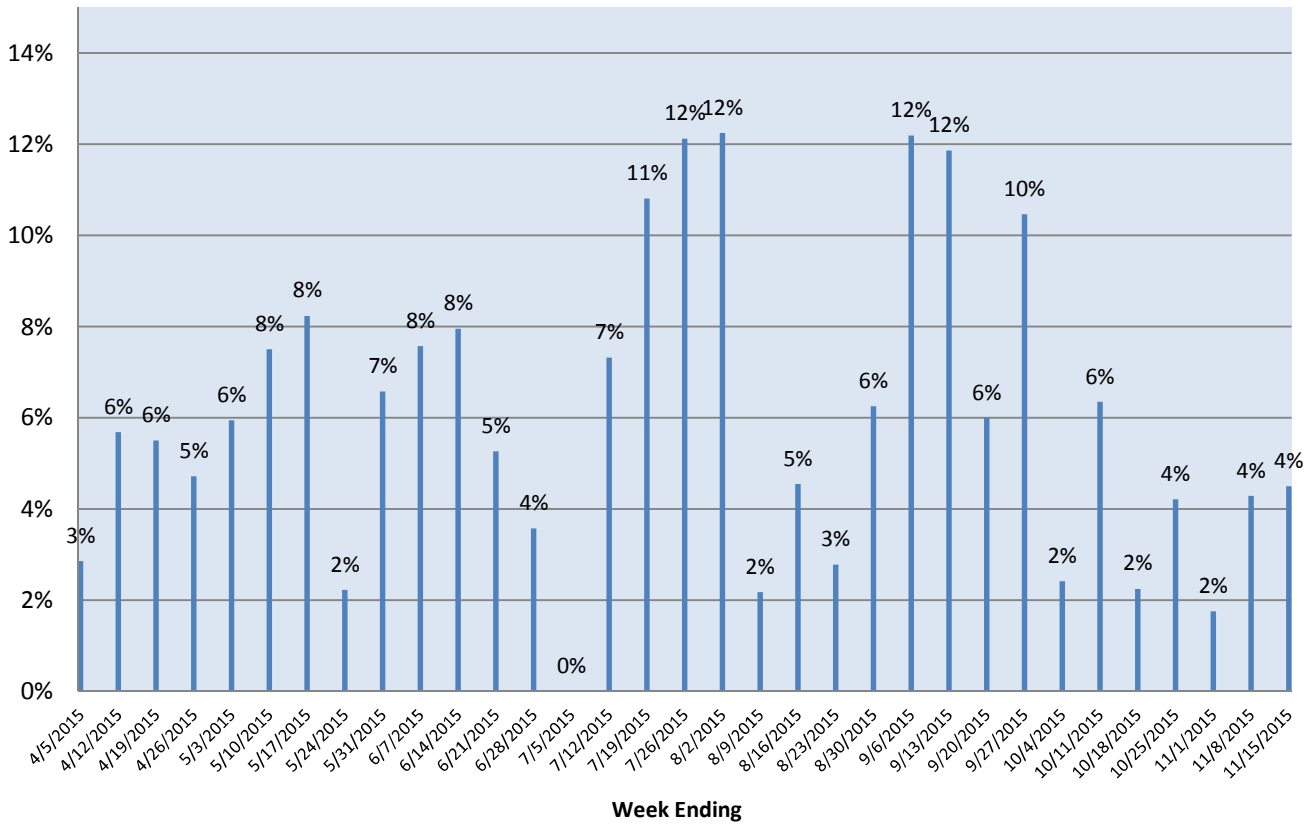


Pathogens Report

Week Ending

Pathogens Report

Bordetella Positive Rate



Enterovirus, CSF (PCR)

