

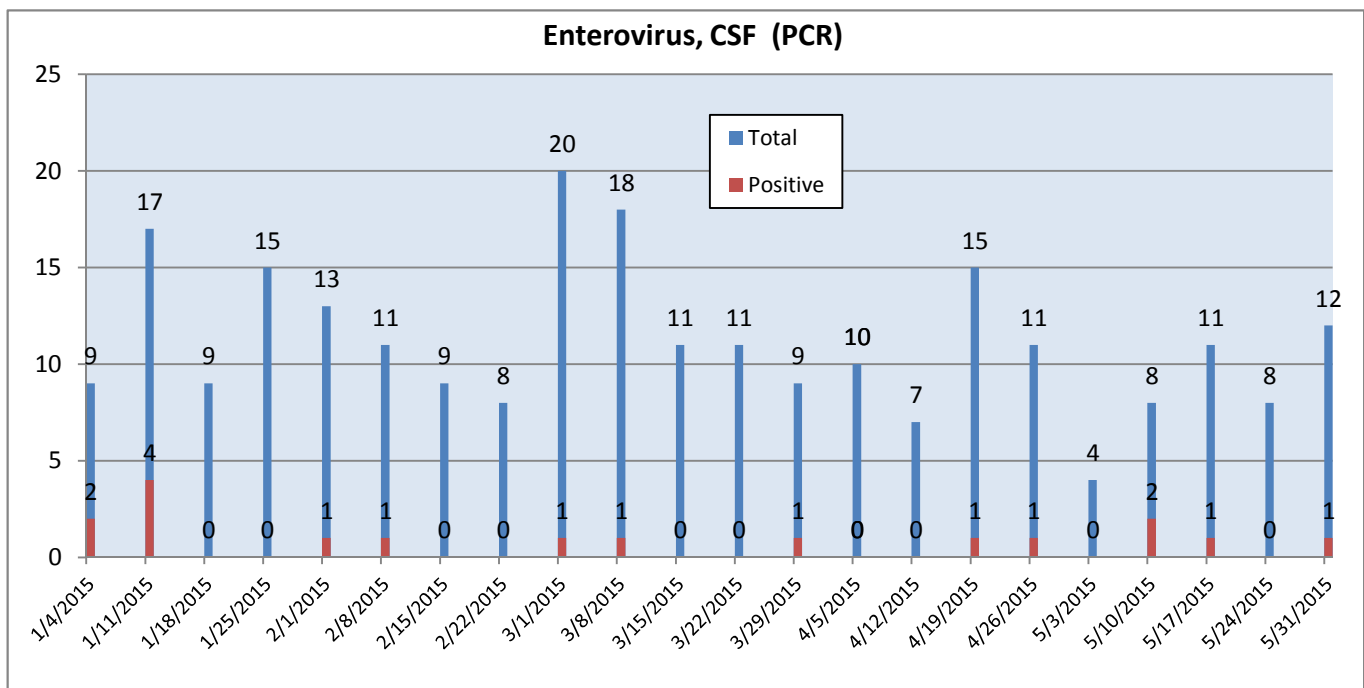
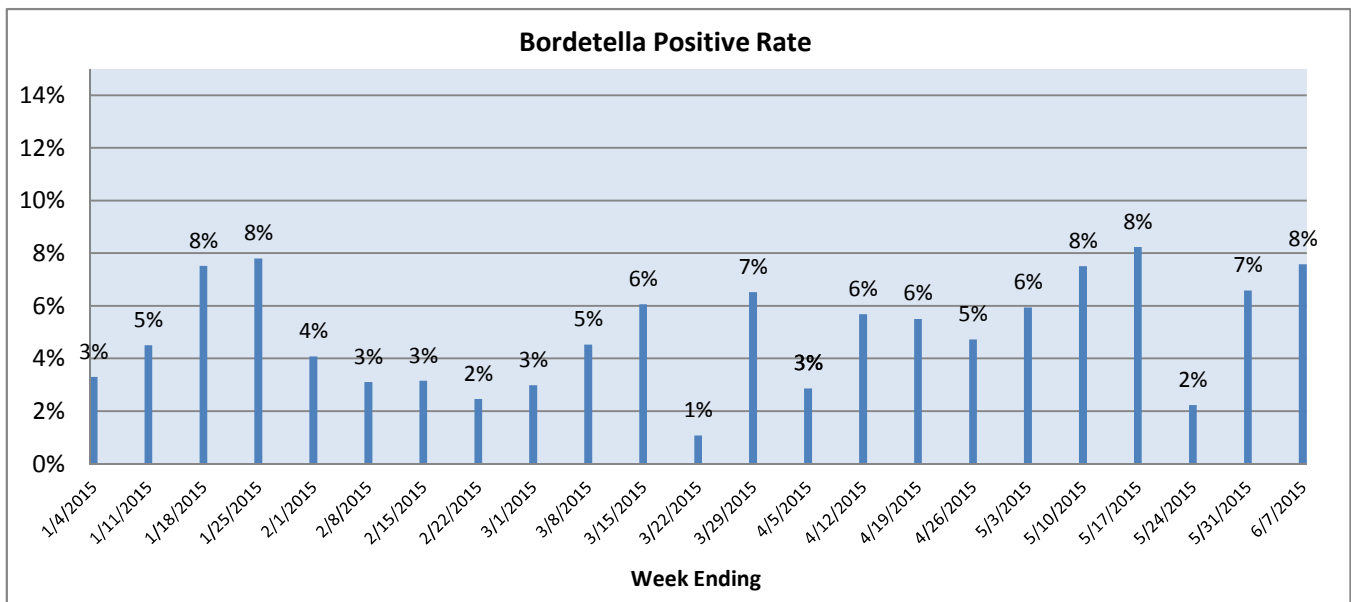
Pathogens Report

The following report is a listing of selected pathogens detected at Rady Children's Hospital. The report includes data from adult and pediatric specimens collected locally. ** This information is provided for use by physicians and other health care professionals.

June 1-7, 2015

	Positive Tests Current Week	Total Tests Current Week	Positive Tests YTD*	Total Tests YTD*
RSV (EIA, DFA, and PCR)	0	48	549	3492
Influenza A (EIA, DFA, and PCR)	0	56	391	5232
Influenza B (EIA, DFA, and PCR)	0		97	
B. pertussis/parapertussis (PCR)	5	66	163	3414
**Parainfluenza (PCR)	3	38	88	1561
**Rhinovirus (HRV) (PCR)	14		437	
**Adenovirus (PCR)	0		66	
**Metapneumovirus (hMPV) (PCR)	3		58	
Enterovirus, CSF (PCR)	0	11	17	267

* B. pertussis/parapertussis and Enterovirus are tracked from December 29, 2014. RSV, Influenza, Parainfluenza, HRV, Adenovirus, and hMPV are tracked from September 22, 2014. **Testing performed on RCH inpatients only.



Pathogens Report
