

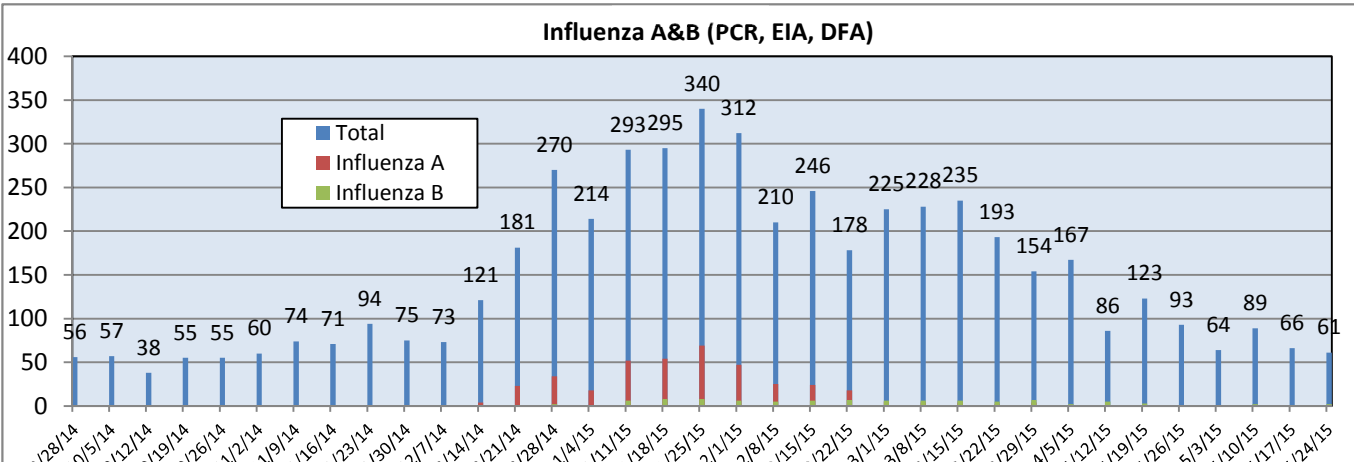
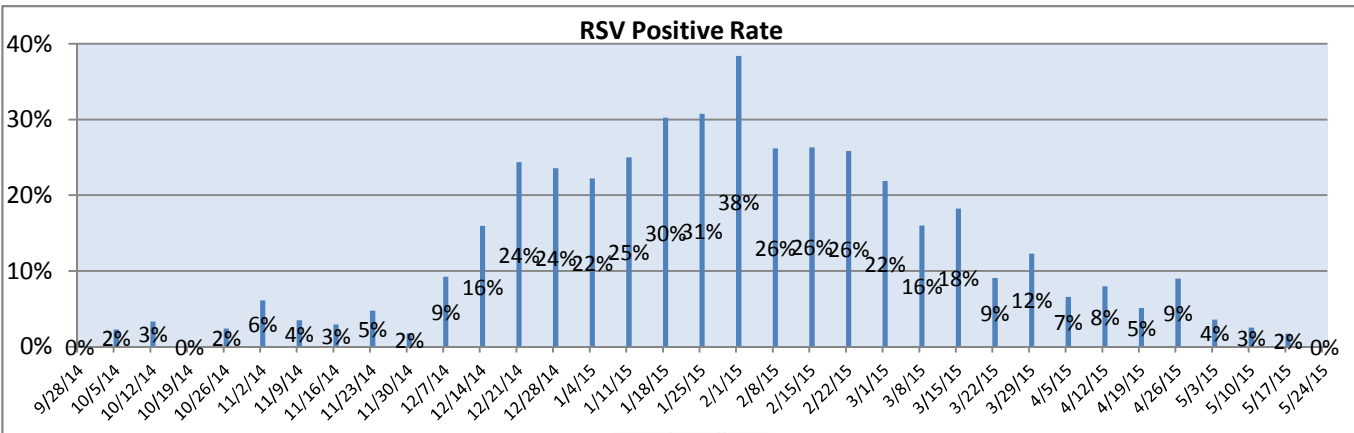
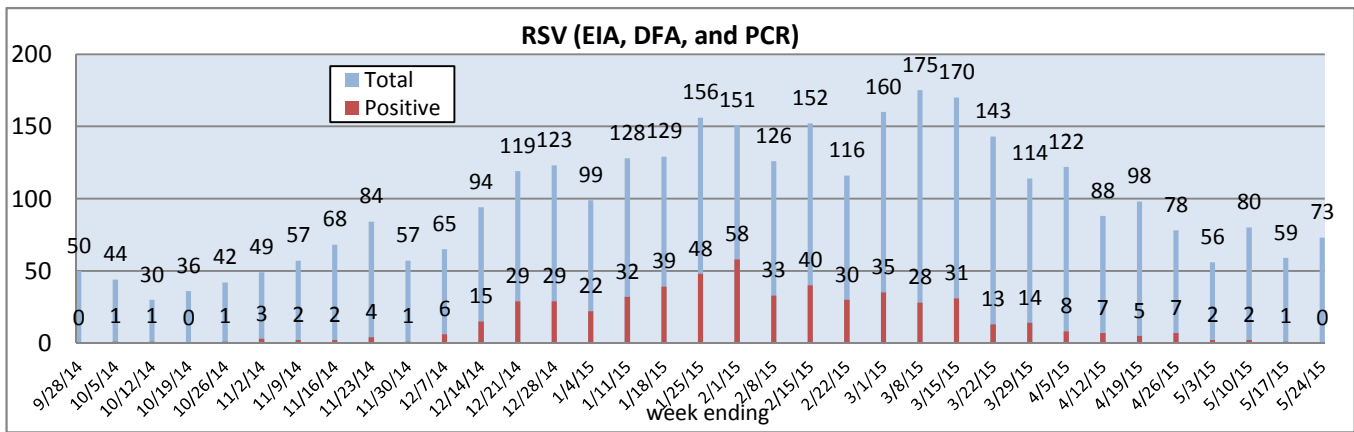
## Pathogens Report

The following report is a listing of selected pathogens detected at Rady Children's Hospital. The report includes data from adult and pediatric specimens collected locally.\*\* This information is provided for use by physicians and other health care professionals.

**May 18-24, 2015**

	Positive Tests Current Week	Total Tests Current Week	Positive Tests YTD*	Total Tests YTD*
<b>RSV (EIA, DFA, and PCR)</b>	0	73	549	3391
<b>Influenza A (EIA, DFA, and PCR)</b>	0	61	391	5152
<b>Influenza B (EIA, DFA, and PCR)</b>	2		97	
<b>B. pertussis/parapertussis (PCR)</b>	2	90	150	3167
<b>**Parainfluenza (PCR)</b>	4	45	84	1493
<b>**Rhinovirus (HRV) (PCR)</b>	17		407	
<b>**Adenovirus (PCR)</b>	0		66	
<b>**Metapneumovirus (hMPV) (PCR)</b>	4		54	
<b>Enterovirus, CSF (PCR)</b>	0	8	16	234

\* B. pertussis/parapertussis and Enterovirus are tracked from December 29, 2014. RSV, Influenza, Parainfluenza, HRV, Adenovirus, and hMPV are tracked from September 22, 2014. \*\*Testing performed on RCH inpatients only.



# Pathogens Report

9 1 10 10 10 1 1 11 11 11 1 12 12 12 2 11 11 11 1 21 21 21 2 31 31 31 4 41 41 41 51 51 51 week ending