



INFLUENZA WATCH

The purpose of the weekly *Influenza Watch* is to summarize current influenza surveillance in San Diego County. *Please note that reported weekly data are preliminary and may change due to delayed submissions and additional laboratory results.*

Report Contents

- Page 1: Overview & Indicators
- Page 2: Virus Characteristics
- Pages 3-7: Trend graphs
- Page 7: Reporting Information

Current Week

Current Week 11 (ending 3/21/2015)

- 45 new influenza detections reported: *Decreasing activity*
- 5% influenza-like-illness (ILI) among emergency department visits: *Expected level*
- 2 influenza-related deaths reported this week
- 9% of deaths registered with Pneumonia & Influenza: *Expected level*

Current Season Summary

6,430
Total Cases

132
ICU Cases

78
Deaths

Virus Characteristics

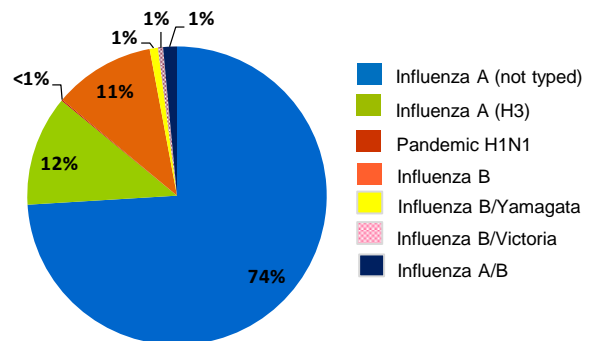


Table 1. Influenza Surveillance Indicators

Indicator	FY 2014-15			FY 2013-14		Prior 3-Year Average**	
	Week 11	Week 10	FYTD#	Week 11	FYTD#	Week 11	FYTD#
All influenza detections reported (rapid or PCR)	45	149	6,430	30	3,857	107	3,440
Percent of emergency department visits for ILI*	5%	5%		4%		4%	
Percent of deaths registered with pneumonia and/or influenza	9%	9%		6%		7%	
Number of influenza-related deaths reported^	2	5	78	2	65	3.3	30.0

FYTD=Fiscal year to date; FY is July 1-June 30 (Week 27-26). Total deaths reported in prior years: 70 in 2013-14, 65 in 2012-13, 14 in 2011-12.

* Previous weeks percentages may change due to delayed reporting.

** Includes FYs 2013-14, 2012-13, and 2011-12.

^ Current FY deaths are shown by week of report; by week of death for prior FYs.

Influenza and Measles-like Rashes

The Centers for Disease Control and Prevention (CDC) has been notified by multiple states of patients with laboratory-confirmed influenza (primarily influenza B virus infection) who also have morbilliform (i.e., maculopapular) rash. Testing for measles infections in these patients has been negative. While the number of these cases has been small so far, influenza B virus circulation is increasing, and there is some concern that cases of influenza B-associated rash may also increase. The clinical significance of this syndrome is not yet clear. Rash is an uncommon complication of influenza and a [very rare complication of influenza B virus infection](#).

CDC has established a case definition with all of the following four criteria: presence of morbilliform rash; negative measles testing (by IgG, IgM antibody serology or RT-PCR test) ; laboratory-confirmed influenza (by rapid diagnostic test, fluorescent antibody, enzyme immunoassay, RT-PCR test, or viral culture); and onset of both rash and influenza-like illness on or after October 1, 2014. Please notify the County Epidemiology Program if any patient with these criteria is identified by calling 619-692-8499. "Morbilliform rash" may also be written on the laboratory or other forms currently being used to report influenza cases or clinicians may use the [Confidential Morbidity Report](#) (write "influenza with rash" under disease being reported and fax to 858-715-6458).

CDC is also probing reports of swollen salivary glands (parotitis) in people with flu, mainly children who had H3N2 infections. Please notify the County Epidemiology Program of any cases of parotitis in association with documented influenza infection.

Table 2. Influenza Detections Reported, FY 2014-15*

Positive Test Type/Subtype	Week 11	Total To-Date
Influenza A†	17	4,744
Influenza A(H1N1) Pandemic 2009	0	7
Influenza A (H3) Seasonal	1	765
Influenza B†	25	725
Influenza B/Yamagata	0	57
Influenza B/Victoria	0	35
Influenza A/B†	2	97
Total	45	6,430

* FY is July 1- June 30, or Week 27 - 26.

† No further characterization performed or results not available at time of publication.

Influenza Watch

Figure 1. Percent of Emergency Department Visits for Influenza-like-Illness by Week and FY

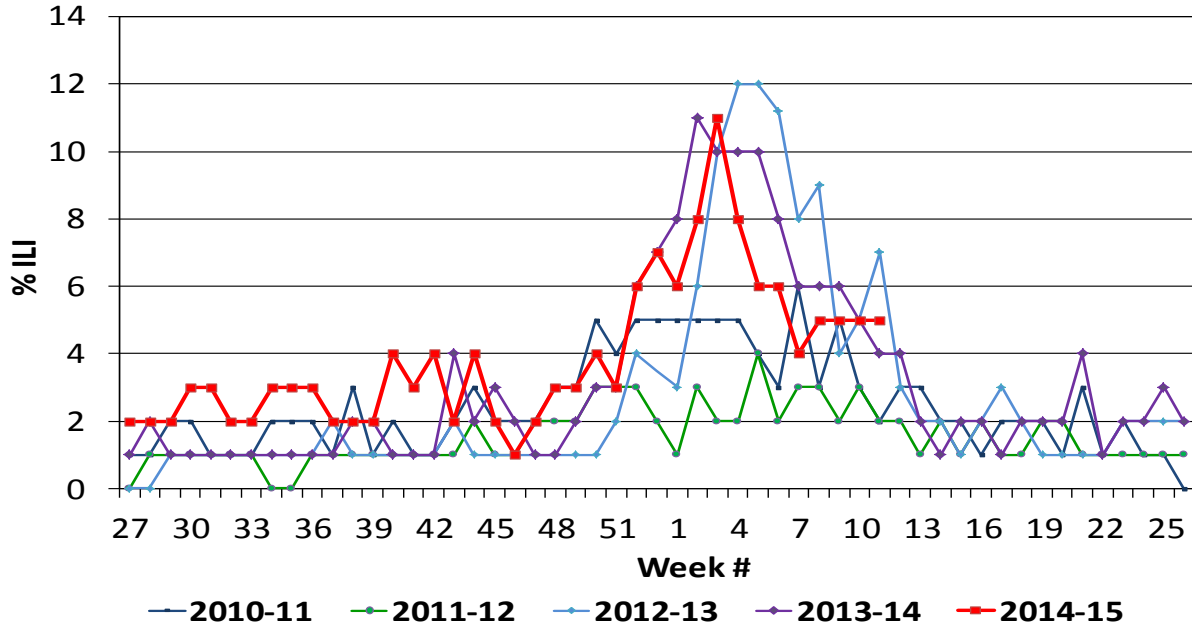
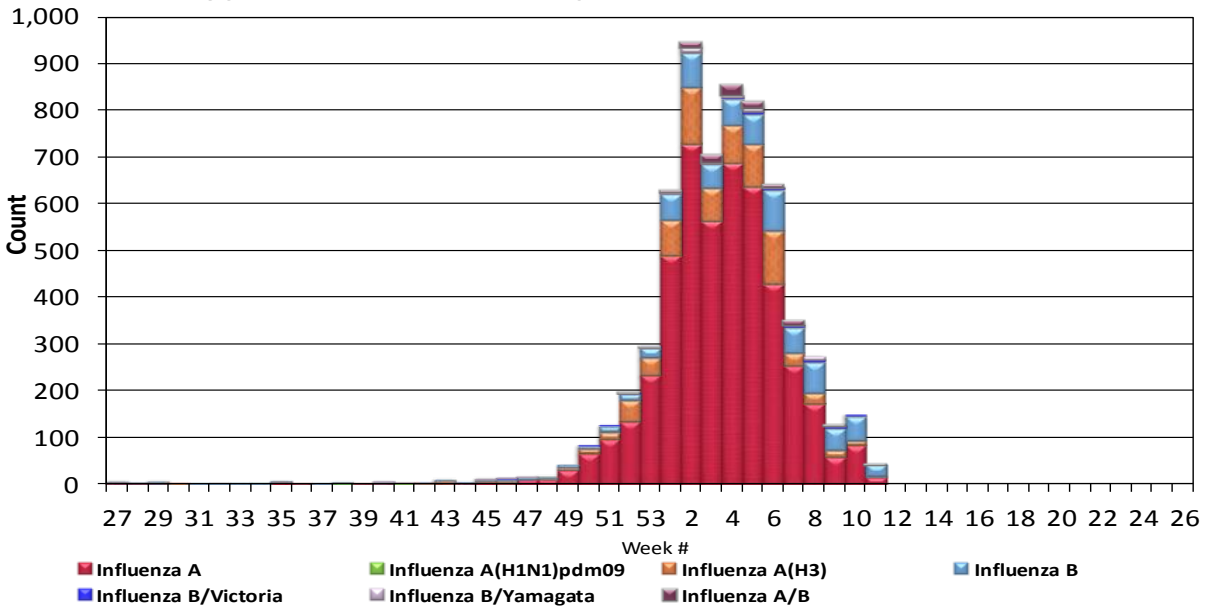


Figure 2. San Diego County Influenza Detections by Type and Week of Report, 2014-15 FYTD (N=6,430)



Influenza Watch

Figure 3. Percent of Reported Influenza Cases by Age Group and Season, 2009-10 to 2014-15 FYTD

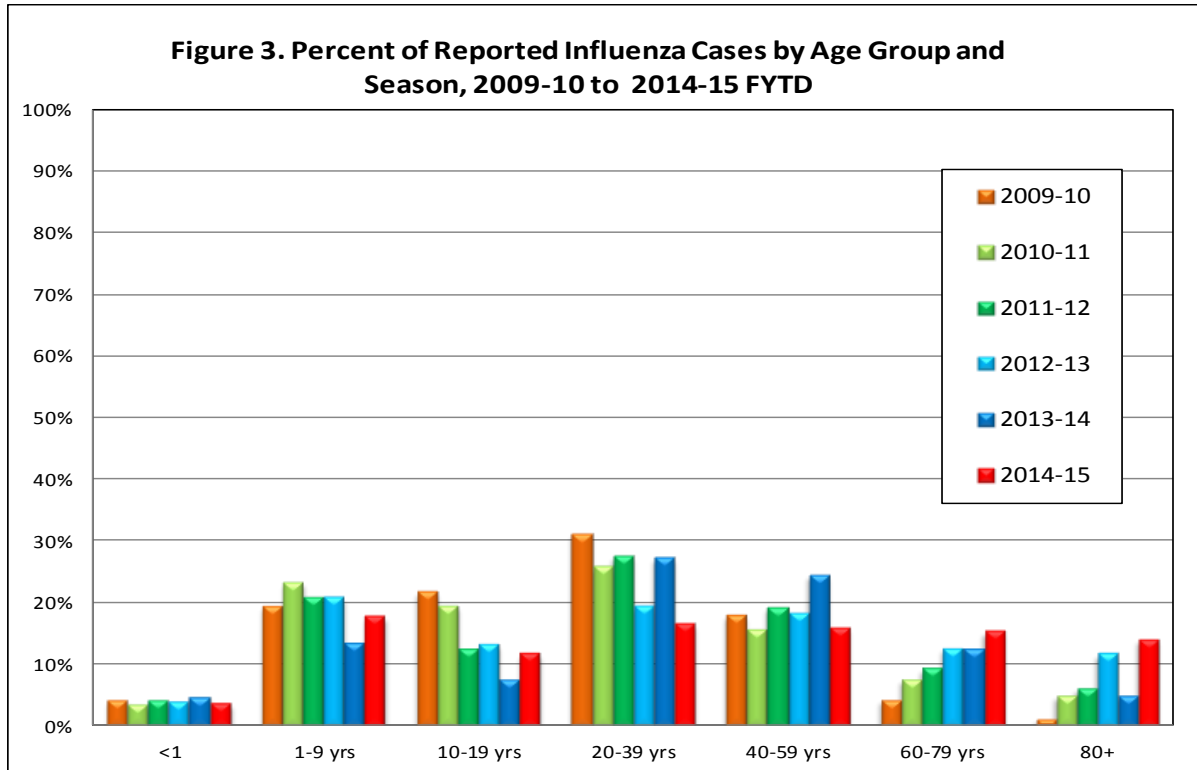
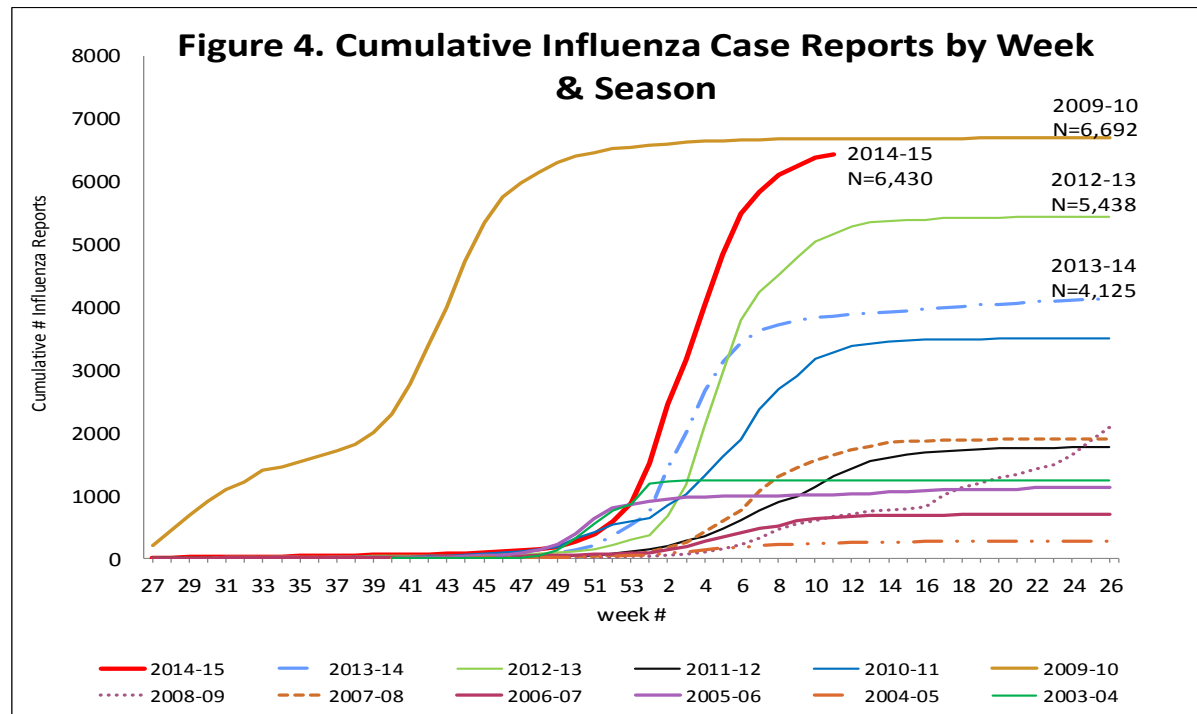


Figure 4. Cumulative Influenza Case Reports by Week & Season



Influenza Watch

Figure 5. Percent of San Diego County Emergency Department Visits for Influenza-like-Illness by Week and FY Compared to 5-Year Baseline & Upper 95% Threshold Values (Serfling Method)

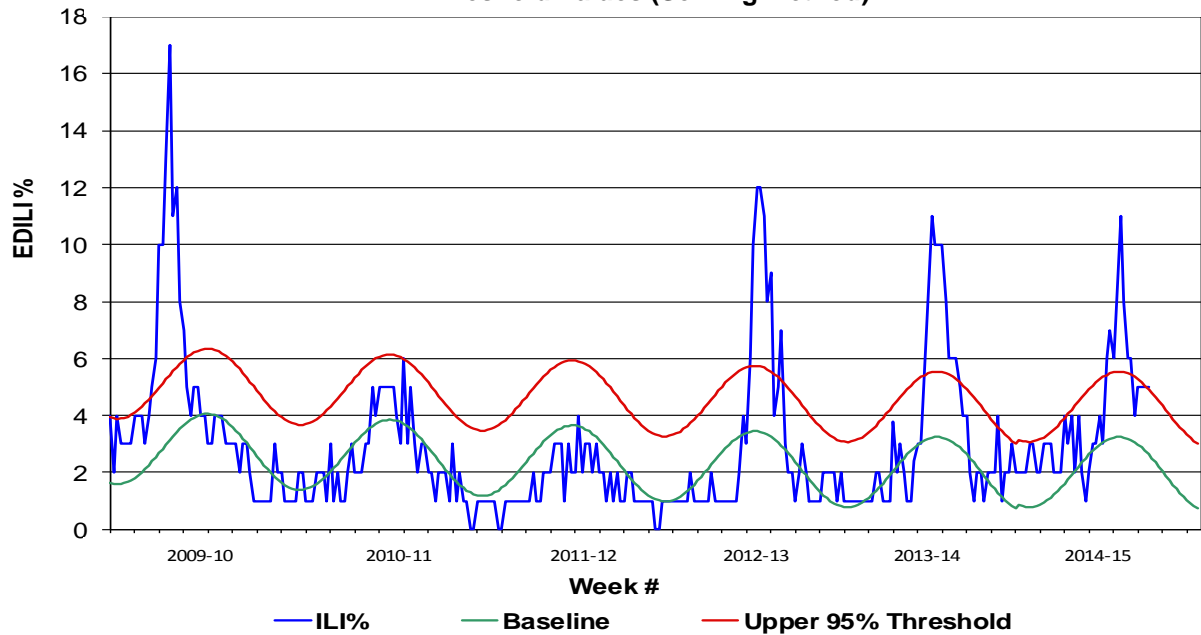
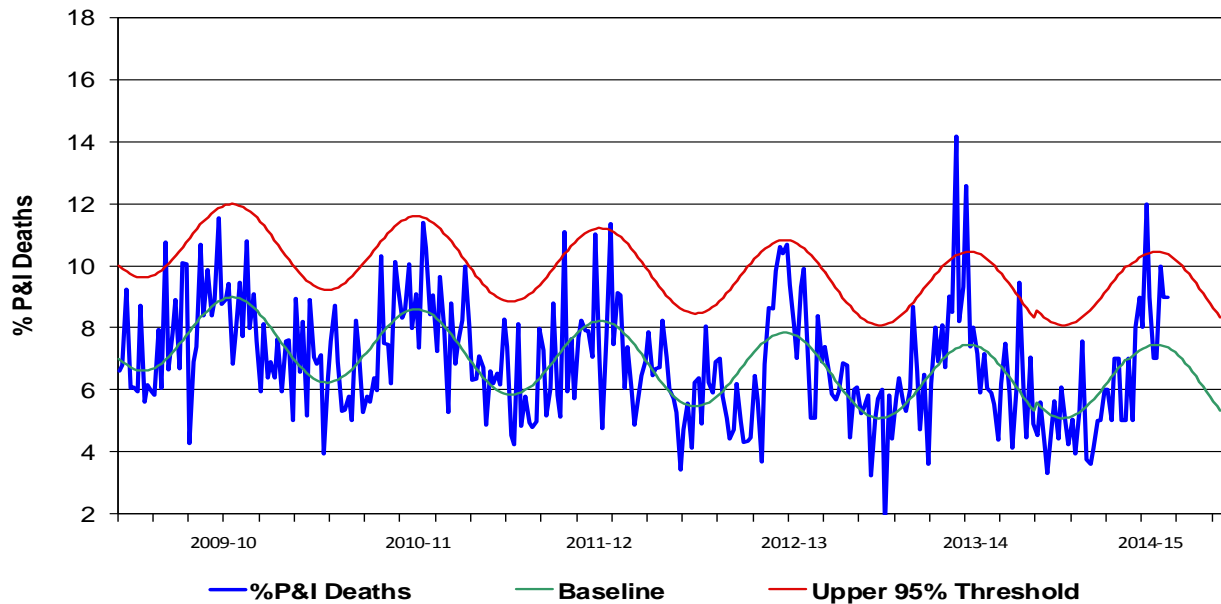


Figure 6. Percent of All San Diego County Deaths Registered with Pneumonia and/or Influenza by Week and FY Compared to Prior 5-Year Baseline & Upper 95% Threshold (Serfling Method)



Influenza Watch

Figure 7. Influenza Deaths by Type and Season

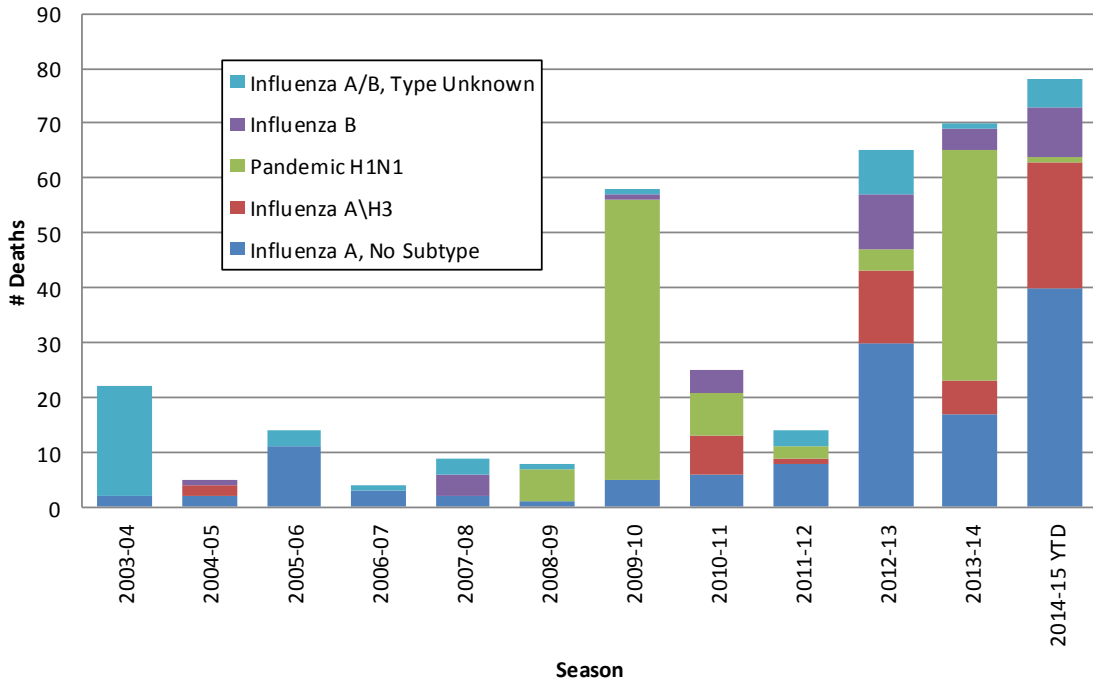


Figure 8. Influenza Deaths by Age and Season

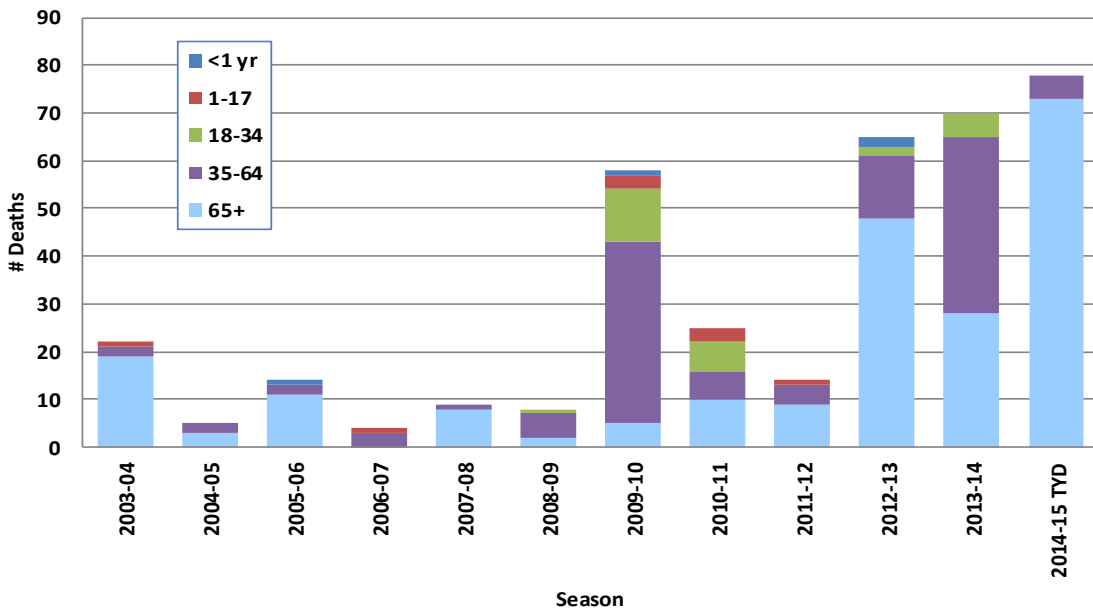
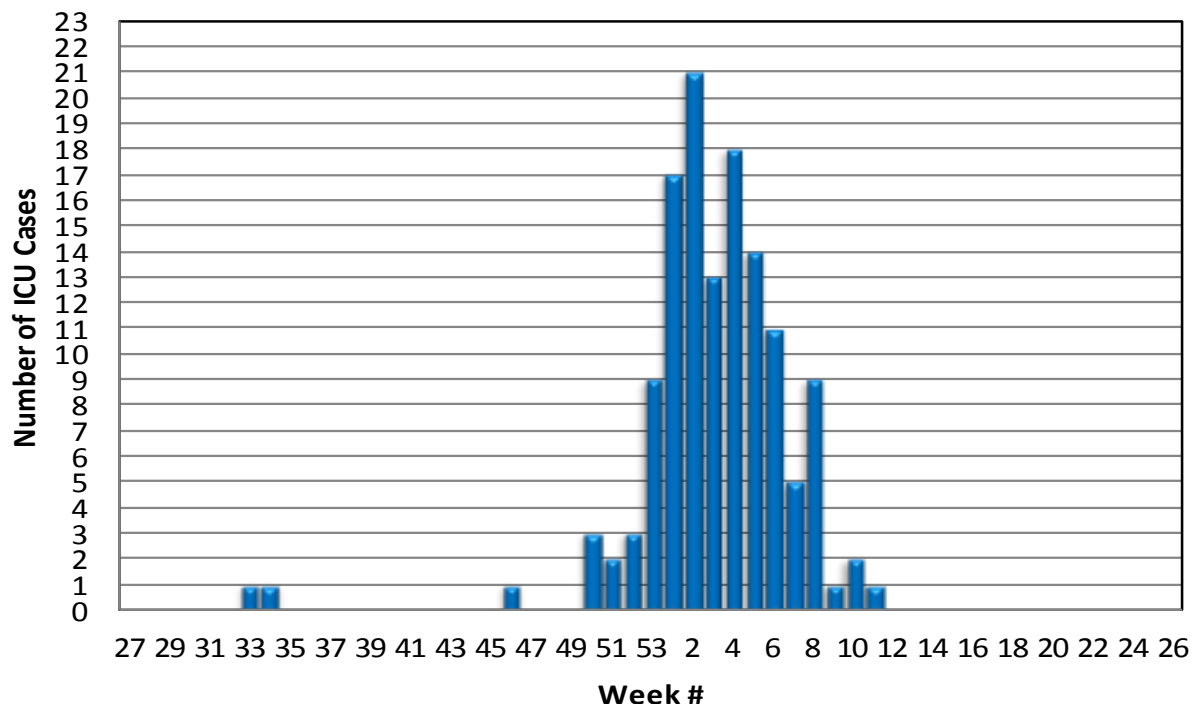


Figure 9. Number of Influenza Cases Requiring ICU Care by Week Reported, 2014-15



State and U.S. Status Reports

- CA Department of Public Health [Influenza](#)
- CDC Influenza Surveillance [Weekly Report](#)

Influenza Reporting Local providers are encouraged to report any laboratory positive influenza detections to the County’s Epidemiology Program by **FAX to (858) 715-6458**. Please fax a [Case Report Form](#) and/or a printed laboratory result. If known, please indicate if patient was admitted to ICU or died. For questions regarding sending specimens to Public Health Laboratory (PHL), call (619) 692-8500. Click here for the updated PHL [PCR Test Request Form](#). Contact Epidemiology with any questions at **(619) 692-8499** or EpiDiv.HHSA@sdcounty.ca.gov.

Immunization Resources County of San Diego Immunization Branch www.sdiz.org