



INFLUENZA WATCH

The purpose of the weekly *Influenza Watch* is to summarize current influenza surveillance in San Diego County. *Please note that reported weekly data are preliminary and may change due to delayed submissions and additional laboratory results.*

Report Contents

- Page 1: Overview & Indicators
- Page 2: Virus Characteristics
- Pages 3-7: Trend graphs
- Page 7: Reporting Information

Current Week

Current Week 8 (ending 2/28/2015)

- 273 new influenza detections reported: *Elevated*
- 5% influenza-like-illness (ILI) among emergency department visits: *Elevated*
- 6 influenza-related deaths reported this week
- 7% of deaths registered with Pneumonia & Influenza: *Expected level*

Current Season Summary

6,112
Total Cases

125
ICU Cases

68
Deaths

Virus Characteristics

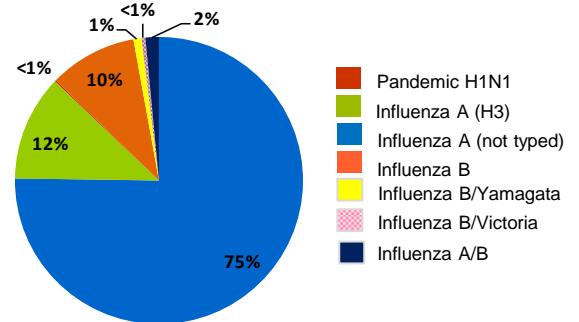


Table 1. Influenza Surveillance Indicators

Indicator	FY 2014-15			FY 2013-14		Prior 3-Year Average**	
	Week 8	Week 7	FYTD#	Week 8	FYTD#	Week 8	FYTD#
	All influenza detections reported (rapid or PCR)	273	353	6,112	82	3,713	165
Percent of emergency department visits for ILI*	5%	4%		6%		6%	
Percent of deaths registered with pneumonia and/or influenza	7%	7%		7%		8%	
Number of influenza-related deaths reported^	6	8	68	2	60	2.7	23.0

FYTD=Fiscal year to date; FY is July 1-June 30 (Week 27-26). Total deaths reported in prior years: 70 in 2013-14, 65 in 2012-13, 14 in 2011-12.

* Previous weeks percentages may change due to delayed reporting.

** Includes FYs 2013-14, 2012-13, and 2011-12.

^ Current FY deaths are shown by week of report; by week of death for prior FYs.

Influenza vaccine effectiveness studies

A [Spanish study](#) published last week using a test-negative case-control design suggests that this year's influenza vaccine has been modestly effective in preventing flu-related hospital admissions. This contrasts with findings of low vaccine effectiveness (VE) this year in the United States and several other countries. [Another study](#) published last week that examined nine flu seasons in Scotland indicates that inactivated trivalent flu vaccines provided about 60% protection for nonelderly adults but may have offered less protection for the elderly.

In January, [US researchers reported](#) a preliminary estimate that this year's vaccine was only 23% effective overall, and recent VE estimates from [Canada](#) and the [United Kingdom](#) were even lower. However, annual vaccination remains a critical component of influenza prevention, and partial protection is better than no protection. At this point in the season, influenza B cases are becoming a greater proportion of reported cases nationally and locally, and the vaccine is well matched to currently circulating influenza B viruses.

Table 2. Influenza Detections Reported, FY 2014-15*

Positive Test Type/Subtype	Week 8	Total To-Date
Influenza A†	171	4,598
Influenza A(H1N1) Pandemic 2009	1	7
Influenza A (H3) Seasonal	24	730
Influenza B†	64	603
Influenza B/Yamagata	7	55
Influenza B/Victoria	6	27
Influenza A/B†	0	92
Total	273	6,112

* FY is July 1- June 30, or Week 27 - 26.

† No further characterization performed or results not available at time of publication.

Influenza Watch

Figure 1. Percent of Emergency Department Visits for Influenza-like-Illness by Week and FY

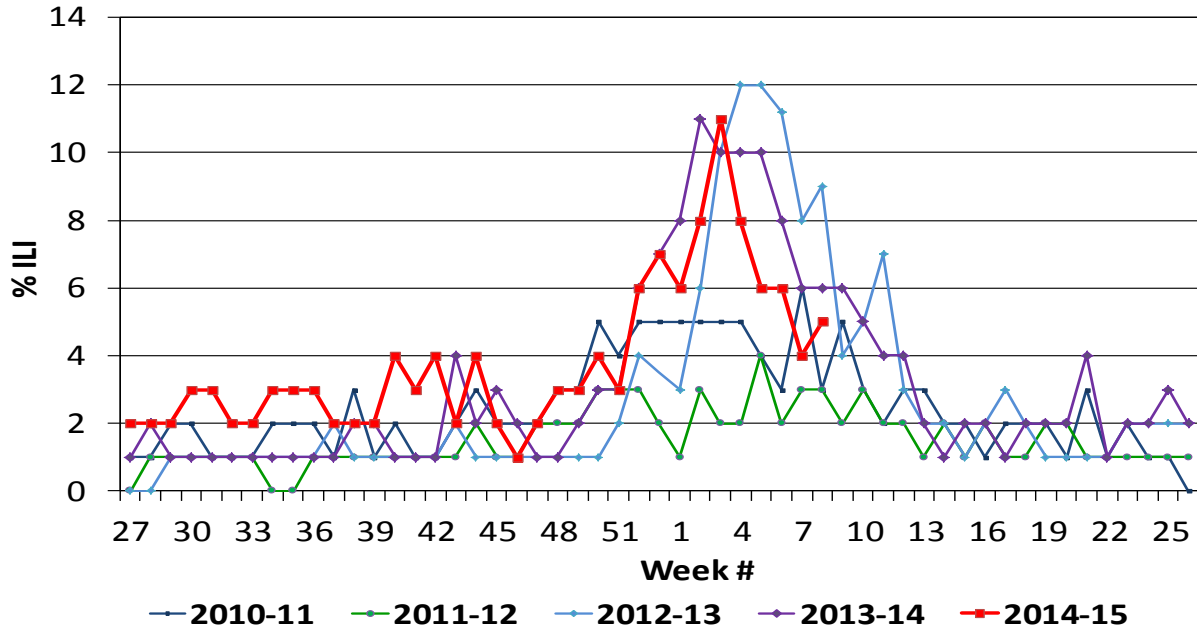
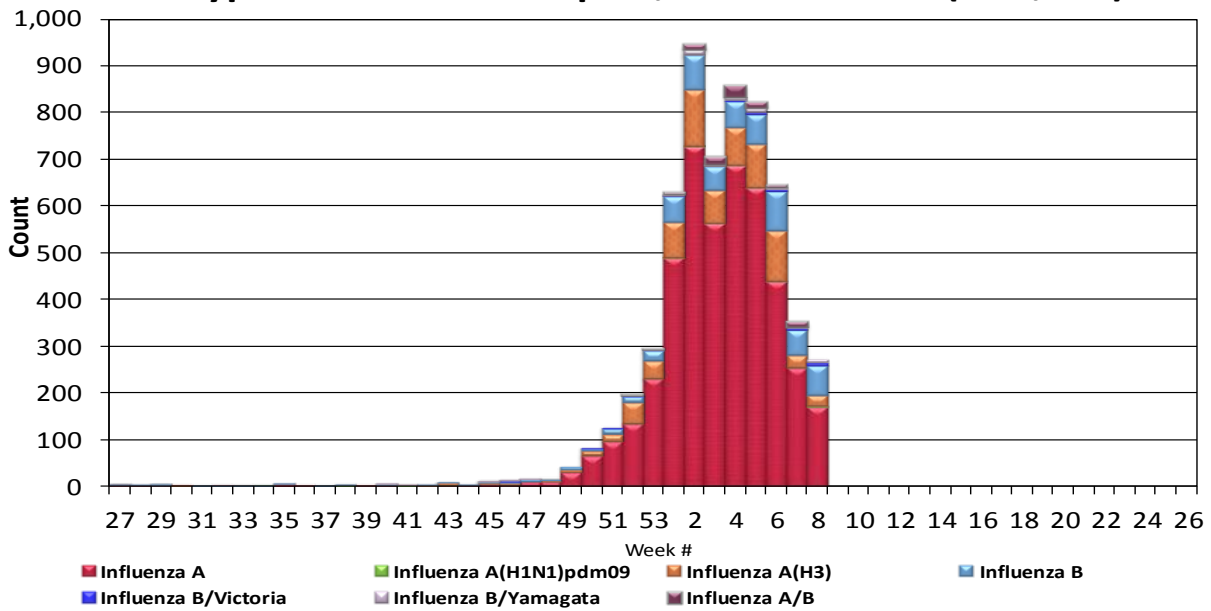


Figure 2. San Diego County Influenza Detections by Type and Week of Report, 2014-15 FYTD (N=6,112)



Influenza Watch

Figure 3. Percent of Reported Influenza Cases by Age Group and Season, 2009-10 to 2014-15 FYTD

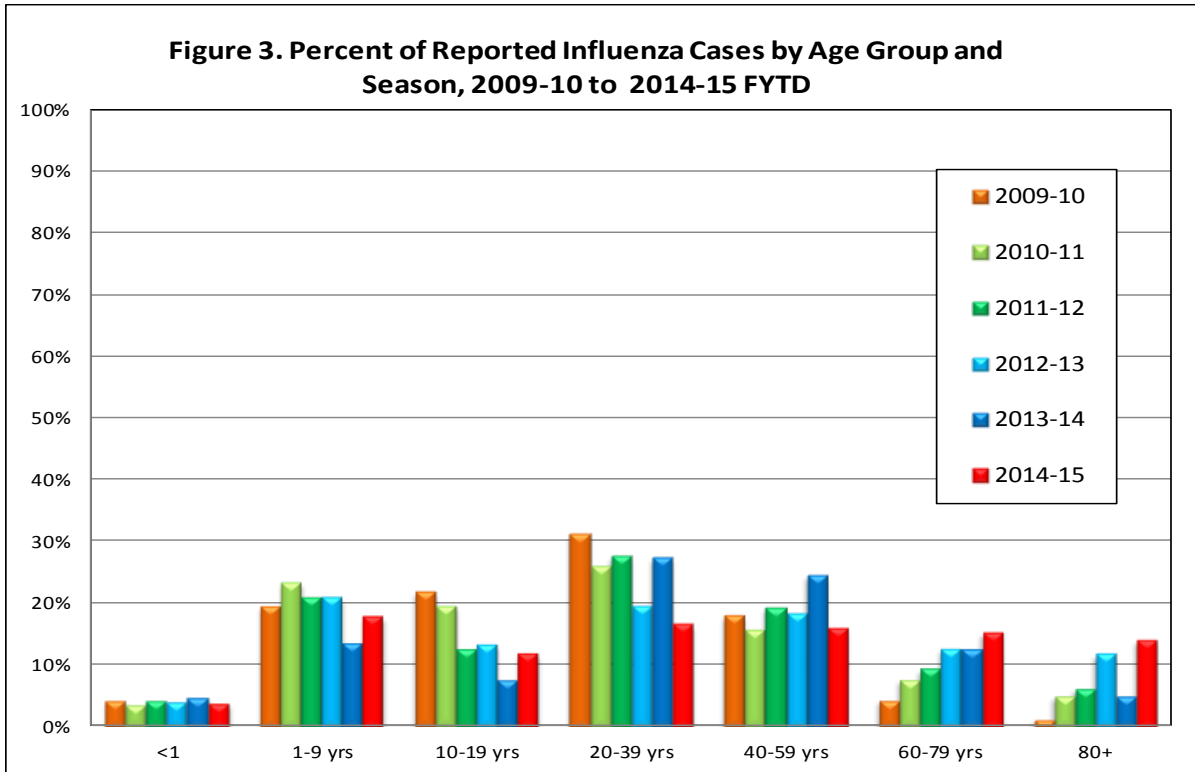
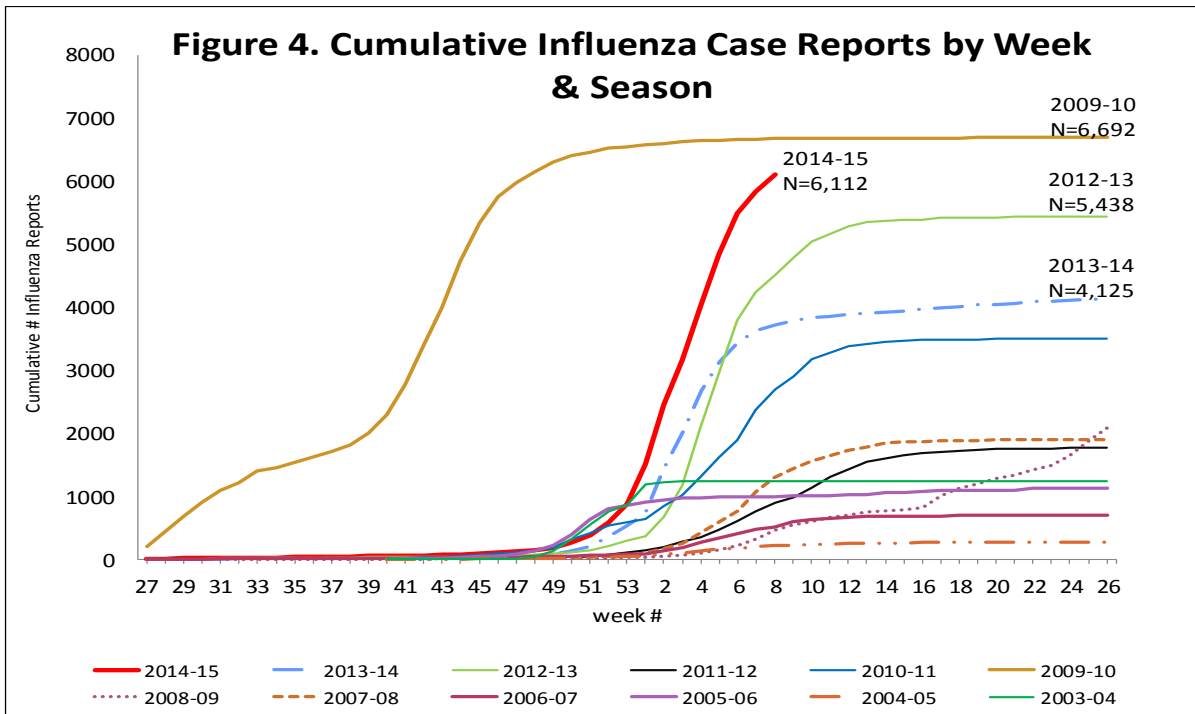


Figure 4. Cumulative Influenza Case Reports by Week & Season



Influenza Watch

Figure 5. Percent of San Diego County Emergency Department Visits for Influenza-like-Illness by Week and FY Compared to 5-Year Baseline & Upper 95% Threshold Values (Serfling Method)

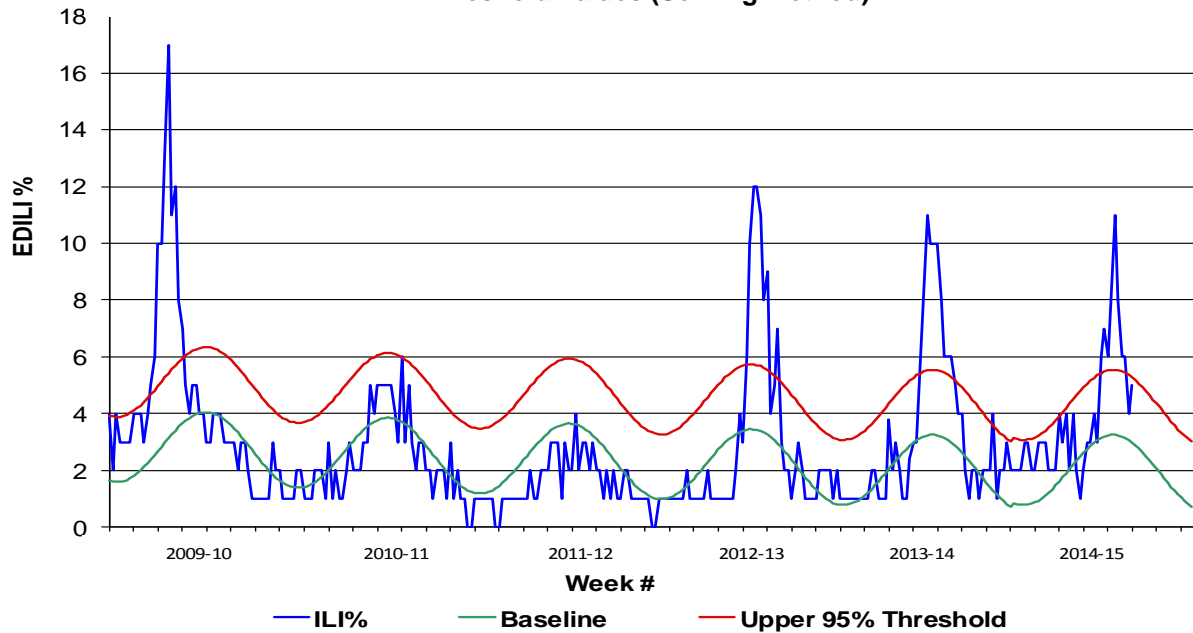
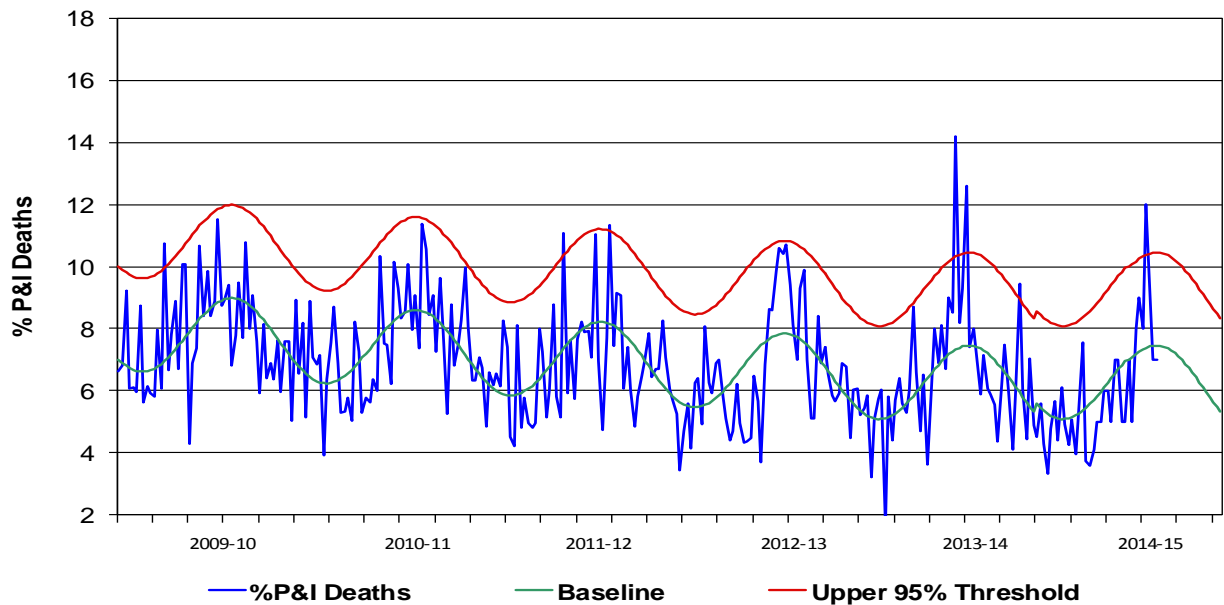


Figure 6. Percent of All San Diego County Deaths Registered with Pneumonia and/or Influenza by Week and FY Compared to Prior 5-Year Baseline & Upper 95% Threshold (Serfling Method)



Influenza Watch

Figure 7. Influenza Deaths by Type and Season

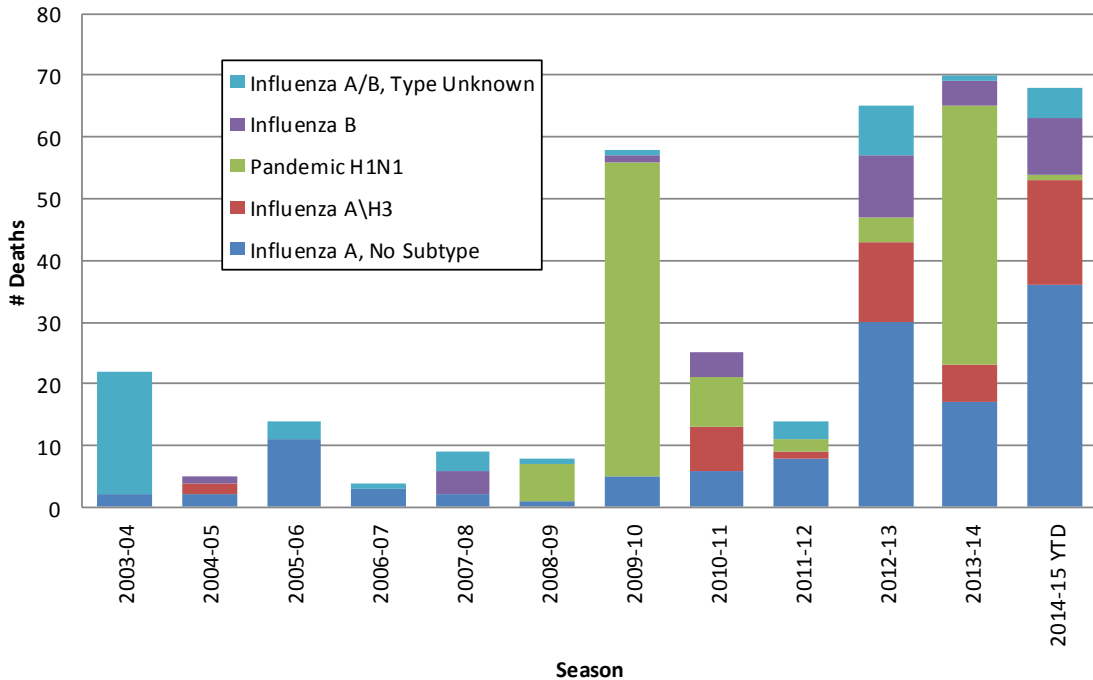


Figure 8. Influenza Deaths by Age and Season

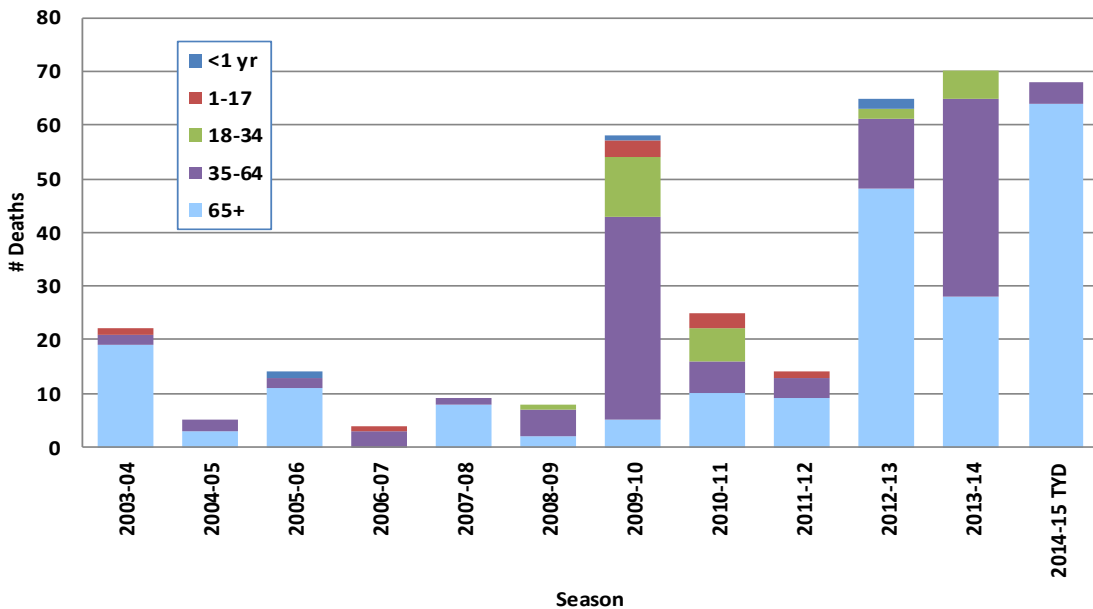
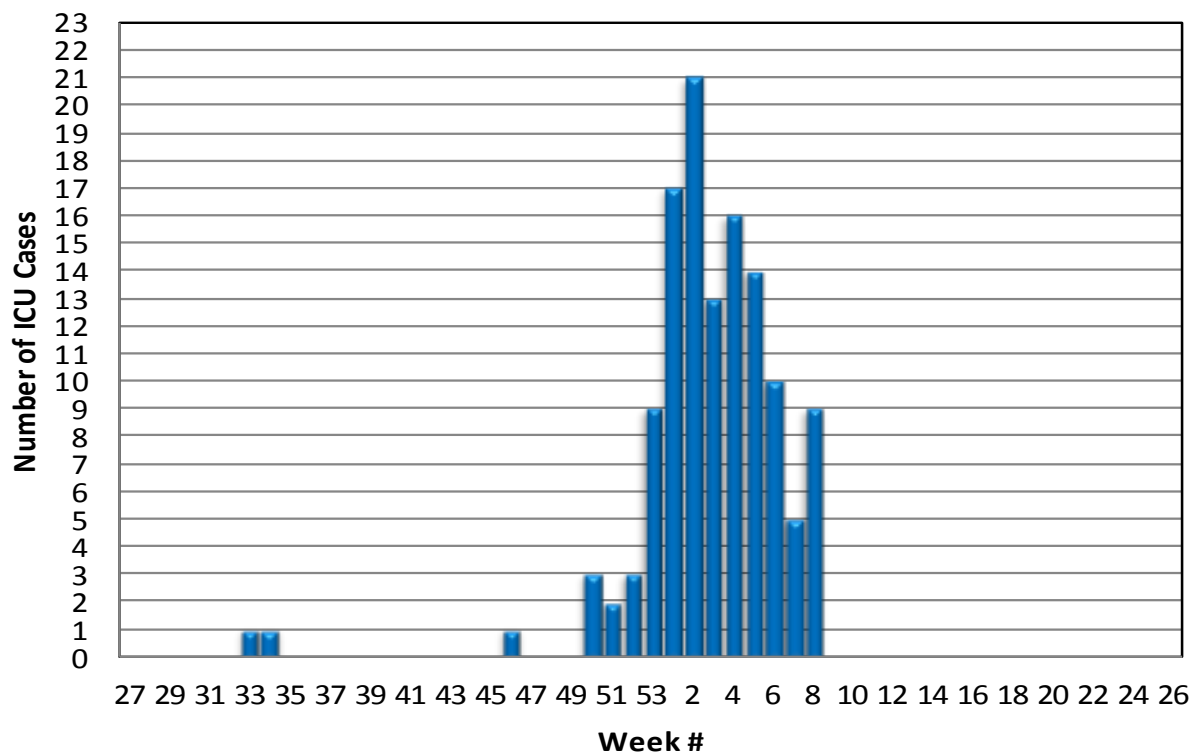


Figure 9. Number of Influenza Cases Requiring ICU Care by Week Reported, 2014-15



State and U.S. Status Reports

- CA Department of Public Health [Influenza](#)
- CDC Influenza Surveillance [Weekly Report](#)

Influenza Reporting Local providers are encouraged to report any laboratory positive influenza detections to the County’s Epidemiology Program by **FAX to (858) 715-6458**. Please fax a [Case Report Form](#) and/or a printed laboratory result. If known, please indicate if patient was admitted to ICU or died. For questions regarding sending specimens to Public Health Laboratory (PHL), call (619) 692-8500. Click here for the updated PHL [PCR Test Request Form](#). Contact Epidemiology with any questions at **(619) 692-8499** or EpiDiv.HHSA@sdcounty.ca.gov.

Immunization Resources County of San Diego Immunization Branch www.sdiz.org