



INFLUENZA WATCH

The purpose of the weekly *Influenza Watch* is to summarize current influenza surveillance in San Diego County. *Please note that reported weekly data are preliminary and may change due to delayed submissions and additional laboratory results.*

Report Contents

- Page 1: Overview & Indicators
- Page 2: Virus Characteristics
- Pages 3-7: Trend graphs
- Page 7: Reporting Information

Current Week

Current Week 5 (ending 2/7/2015)

- 722 new influenza detections reported: *Elevated*
- 6% influenza-like-illness (ILI) among emergency department visits: *Elevated*
- 14 influenza-related deaths reported this week
- 12% of deaths registered with Pneumonia & Influenza: *Elevated level*

Current Season Summary

4,736
Total Cases

96
ICU Cases

43
Deaths

Virus Characteristics

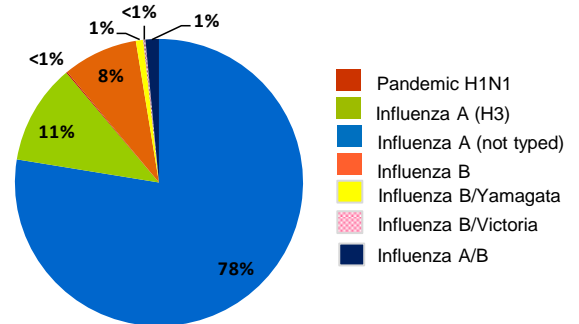


Table 1. Influenza Surveillance Indicators

Indicator	FY 2014-15			FY 2013-14		Prior 3-Year Average**	
	Week 5	Week 4	FYTD#	Week 5	FYTD#	Week 5	FYTD#
	All influenza detections reported (rapid or PCR)	722	853	4,736	473	3,135	482
Percent of emergency department visits for ILI*	6%	8%		10%		9%	
Percent of deaths registered with pneumonia and/or influenza	12%	8%		8%		8%	
Number of influenza-related deaths reported^	14	10	43	12	44	4.0	12.3

FYTD=Fiscal year to date; FY is July 1-June 30 (Week 27-26). Total deaths reported in prior years: 70 in 2013-14, 65 in 2012-13, 14 in 2011-12.

* Previous weeks percentages may change due to delayed reporting.

** Includes FYs 2013-14, 2012-13, and 2011-12.

^ Current FY deaths are shown by week of report; by week of death for prior FYs.

Clinical Algorithm to Evaluate Flu Calls for Antiviral Treatment

The Centers for Disease Control and Prevention (CDC) has created a flowchart to assist medical offices in evaluating patients who call in with possible influenza. If callers report flu-like symptoms, they should be referred to clinical staff who can then evaluate whether the patient is high-risk and antiviral treatment is recommended, even before an office visit. Antiviral treatment is most effective when administered within 48 hours of onset of symptoms. On January 29, 2015, CDC and other health care partners issued a letter to providers encouraging them to heighten awareness of flu and to remind them of the importance of antiviral treatment especially in young children and those 65 years and older.

[Medical Office Telephone Evaluation of Patients with Possible Influenza | Health Professionals | Seasonal Influenza \(Flu\)](#)

[Antiviral Letter to Healthcare Providers](#)

Table 2. Influenza Detections Reported, FY 2014-15*

Positive Test Type/Subtype	Week 5	Total To-Date
Influenza A†	567	3,674
Influenza A(H1N1) Pandemic 2009	0	6
Influenza A (H3) Seasonal	69	535
Influenza B†	65	399
Influenza B/Yamagata	5	39
Influenza B/Victoria	4	12
Influenza A/B†	12	71
Total	722	4,736

* FY is July 1- June 30, or Week 27 - 26.

† No further characterization performed or results not available at time of publication.

Influenza Watch

Figure 1. Percent of Emergency Department Visits for Influenza-like-Illness by Week and FY

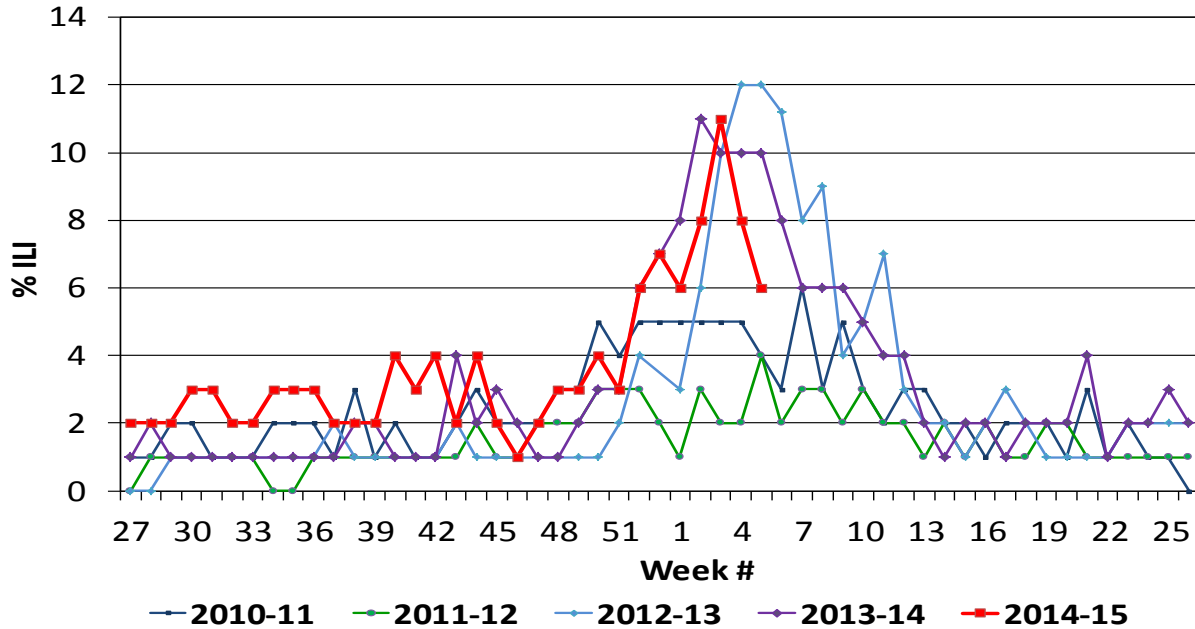
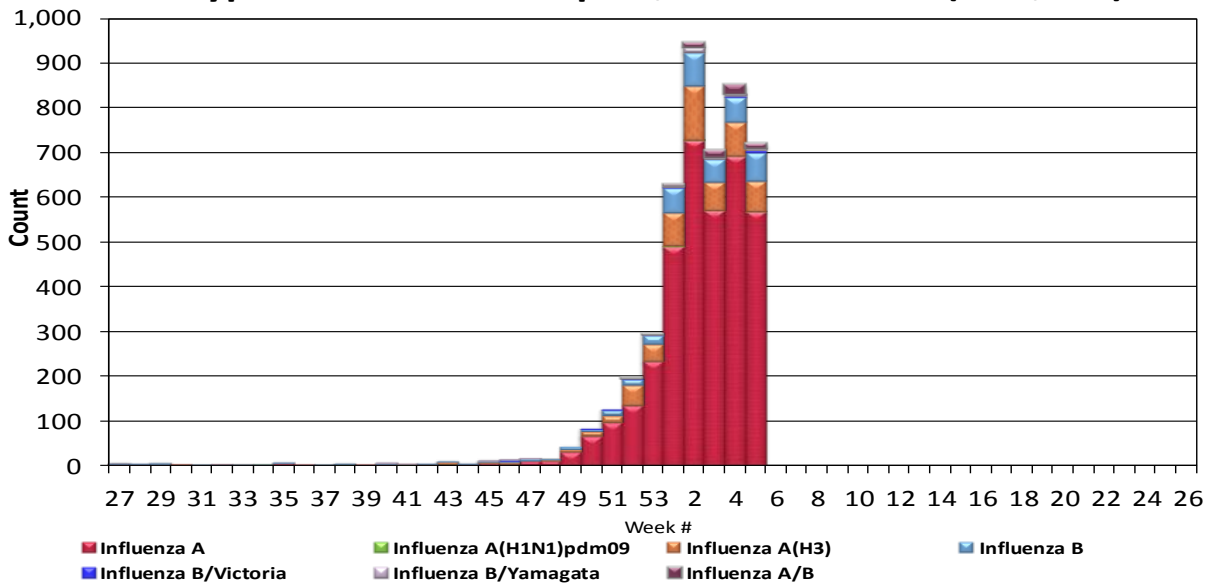


Figure 2. San Diego County Influenza Detections by Type and Week of Report, 2014-15 FYTD (N=4,736)



Influenza Watch

Figure 3. Percent of Reported Influenza Cases by Age Group and Season, 2009-10 to 2014-15 FYTD

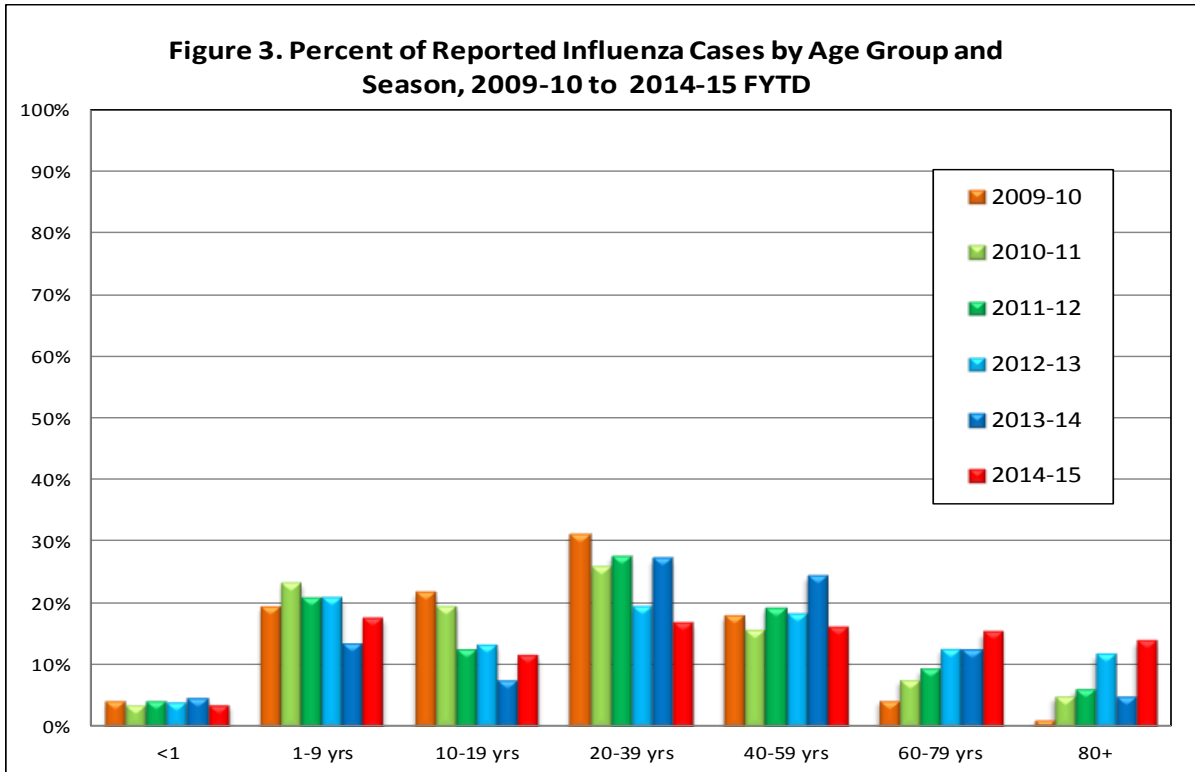
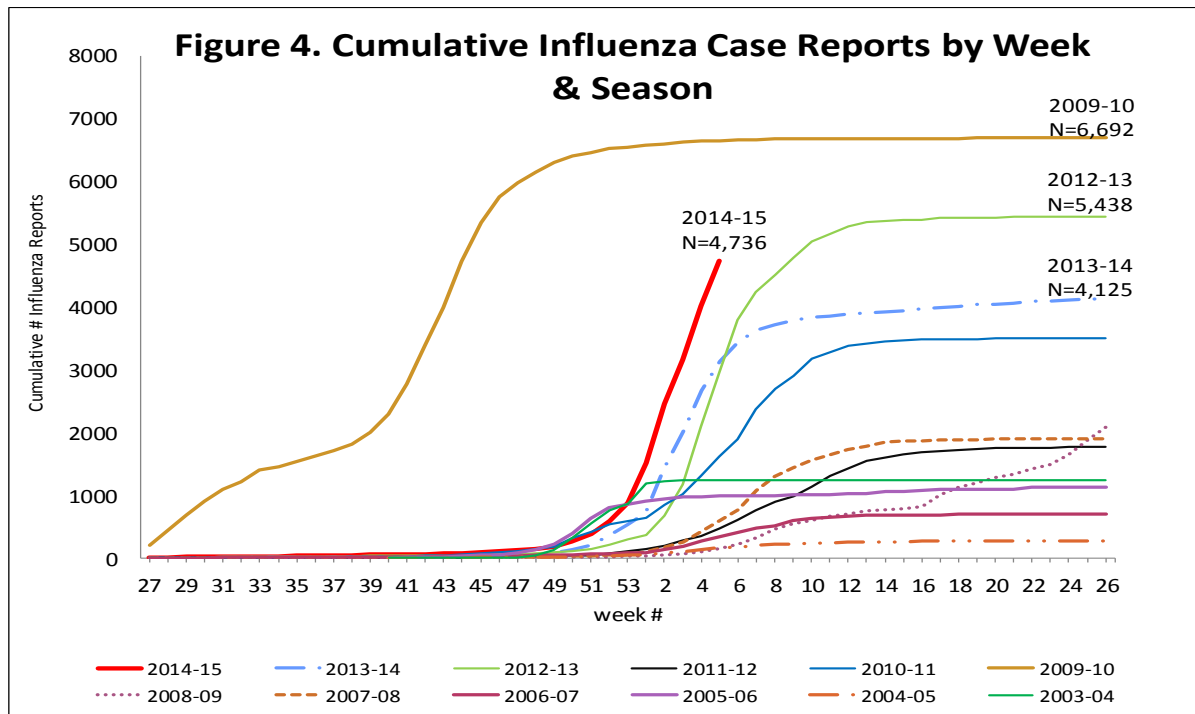


Figure 4. Cumulative Influenza Case Reports by Week & Season



Influenza Watch

Figure 5. Percent of San Diego County Emergency Department Visits for Influenza-like-Illness by Week and FY Compared to 5-Year Baseline & Upper 95% Threshold Values (Serfling Method)

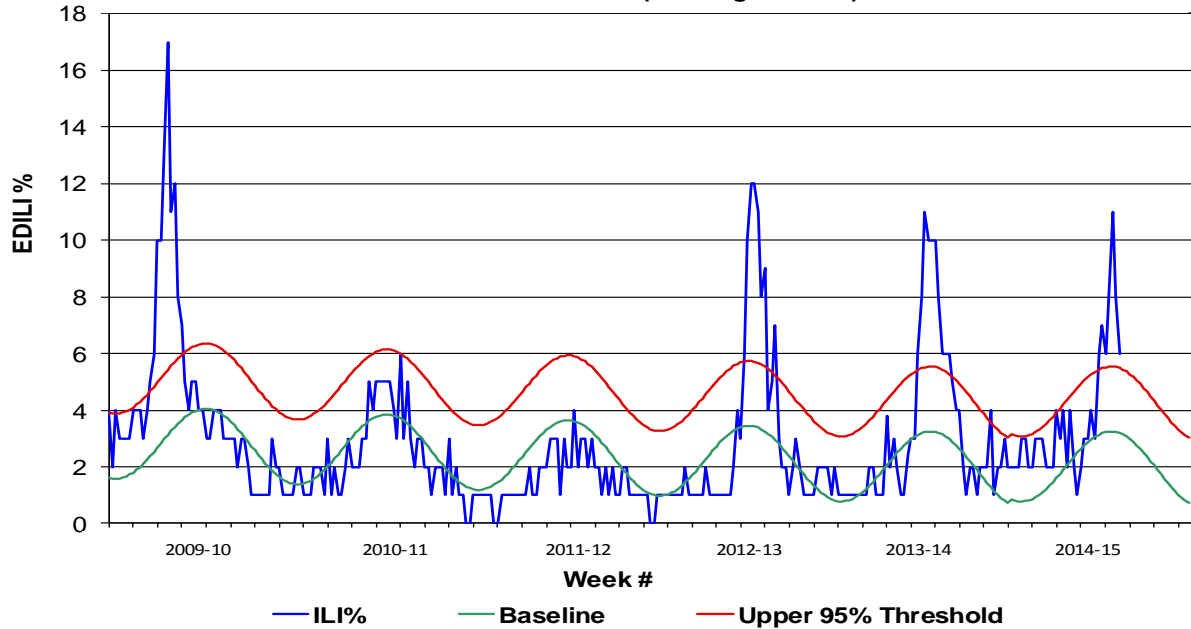
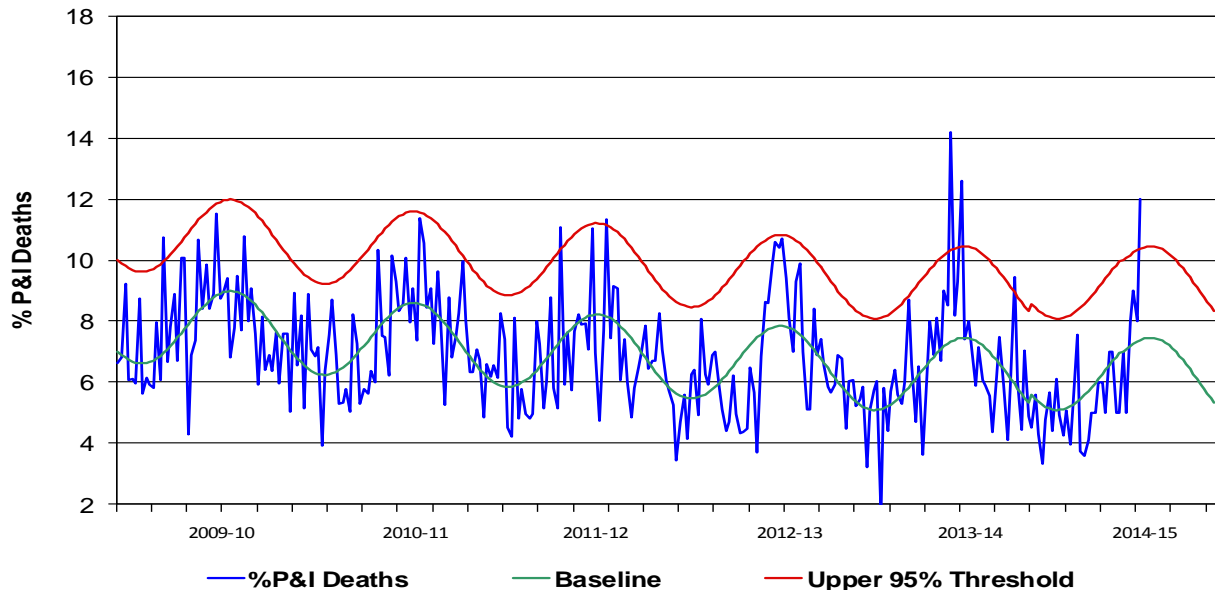


Figure 6. Percent of All San Diego County Deaths Registered with Pneumonia and/or Influenza by Week and FY Compared to Prior 5-Year Baseline & Upper 95% Threshold (Serfling Method)



Influenza Watch

Figure 7. Influenza Deaths by Type and Season

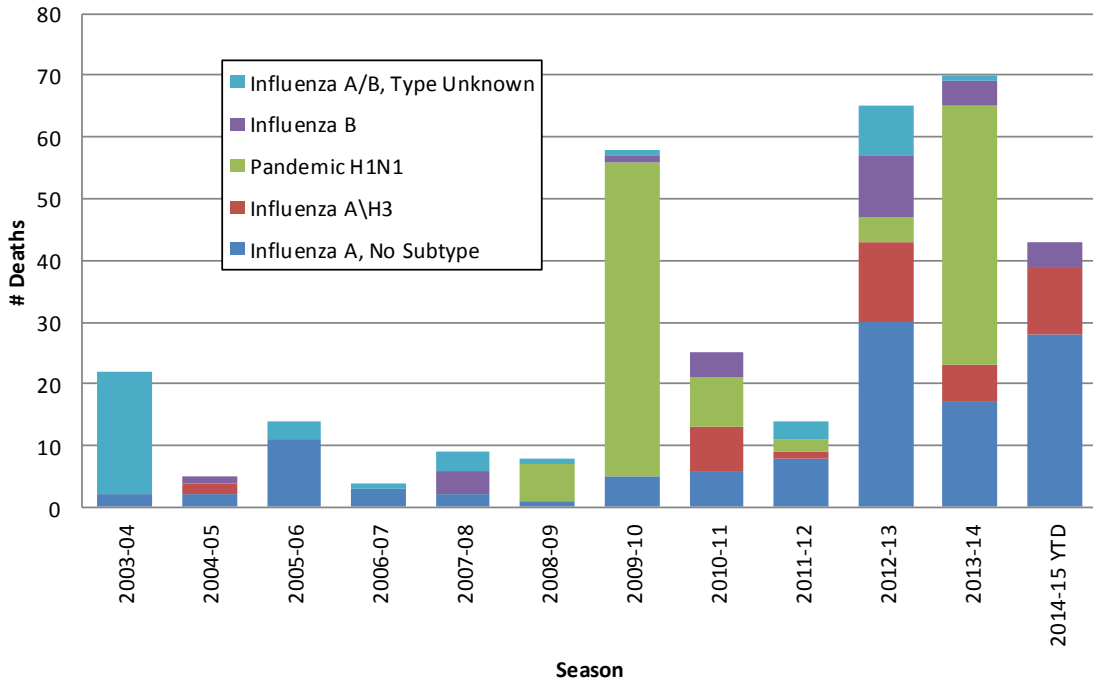


Figure 8. Influenza Deaths by Age and Season

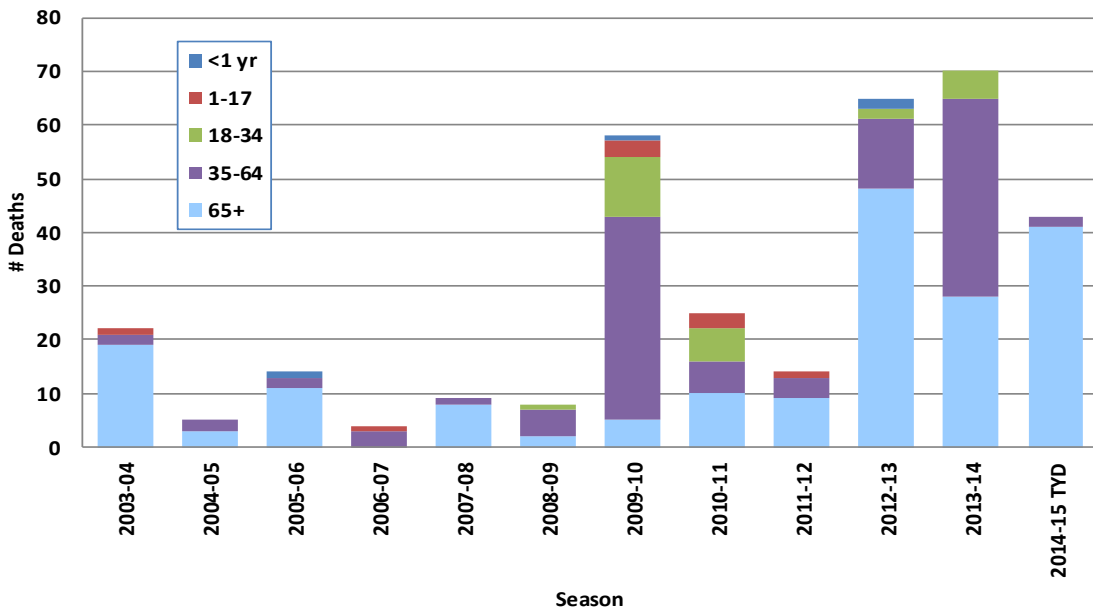
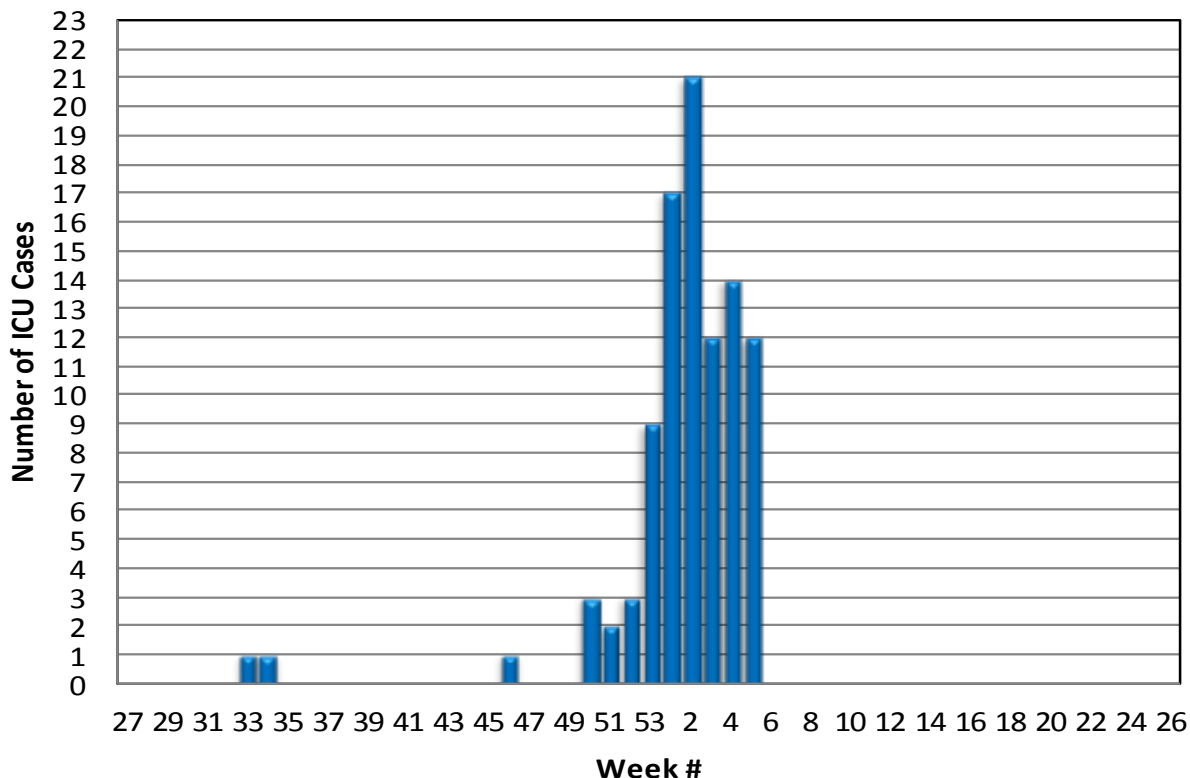


Figure 9. Number of Influenza Cases Requiring ICU Care by Week Reported, 2014-15



State and U.S. Status Reports

- CA Department of Public Health [Influenza](#)
- CDC Influenza Surveillance [Weekly Report](#)

Influenza Reporting Local providers are encouraged to report any laboratory positive influenza detections to the County’s Epidemiology Program by **FAX to (858) 715-6458**. Please fax a [Case Report Form](#) and/or a printed laboratory result. If known, please indicate if patient was admitted to ICU or died. For questions regarding sending specimens to Public Health Laboratory (PHL), call (619) 692-8500. Click here for the updated PHL [PCR Test Request Form](#). Contact Epidemiology with any questions at **(619) 692-8499** or EpiDiv.HHSA@sdcounty.ca.gov.

Immunization Resources County of San Diego Immunization Branch www.sdiz.org