

Pathogens Report

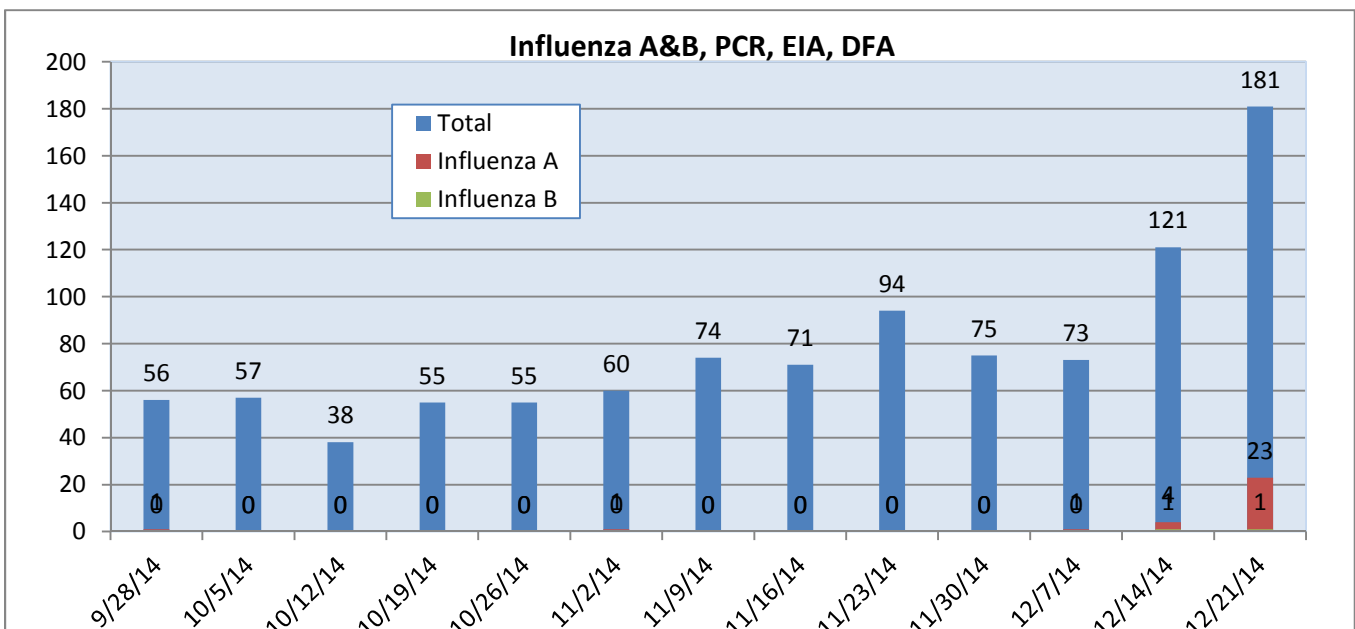
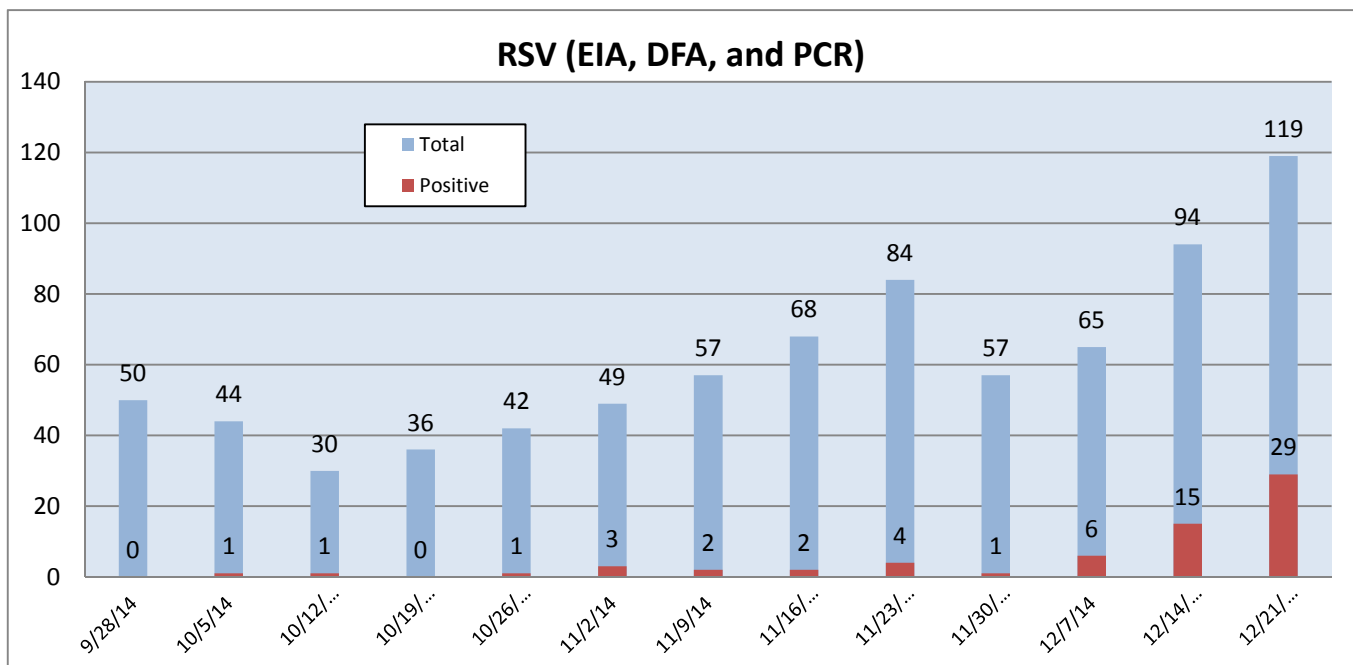
The following report is a listing of selected pathogens detected at Rady Children's Hospital (RCH). The report includes data from adult and pediatric specimens collected locally.** This information is provided for use by physicians and other health care professionals.

December 15-21, 2014

	Positive Tests Current Week	Total Tests Current Week	Positive Tests YTD*	Total Tests YTD*
RSV (EIA, DFA, and PCR)	29	119	65	795
Influenza A (EIA, DFA, and PCR)	23	181	30	1010
Influenza B (EIA, DFA, and PCR)	1	181	2	1010
B. pertussis/parapertussis (PCR)	9	180	541	5219
Enterovirus, CSF (PCR)	1	15	158	655
**Parainfluenza (PCR)	1	44	30	368
**Rhinovirus (HRV) (PCR)	12	44	126	368
**Adenovirus (PCR)	1	44	17	368
**Metapneumovirus (hMPV) (PCR)	0	44	2	368

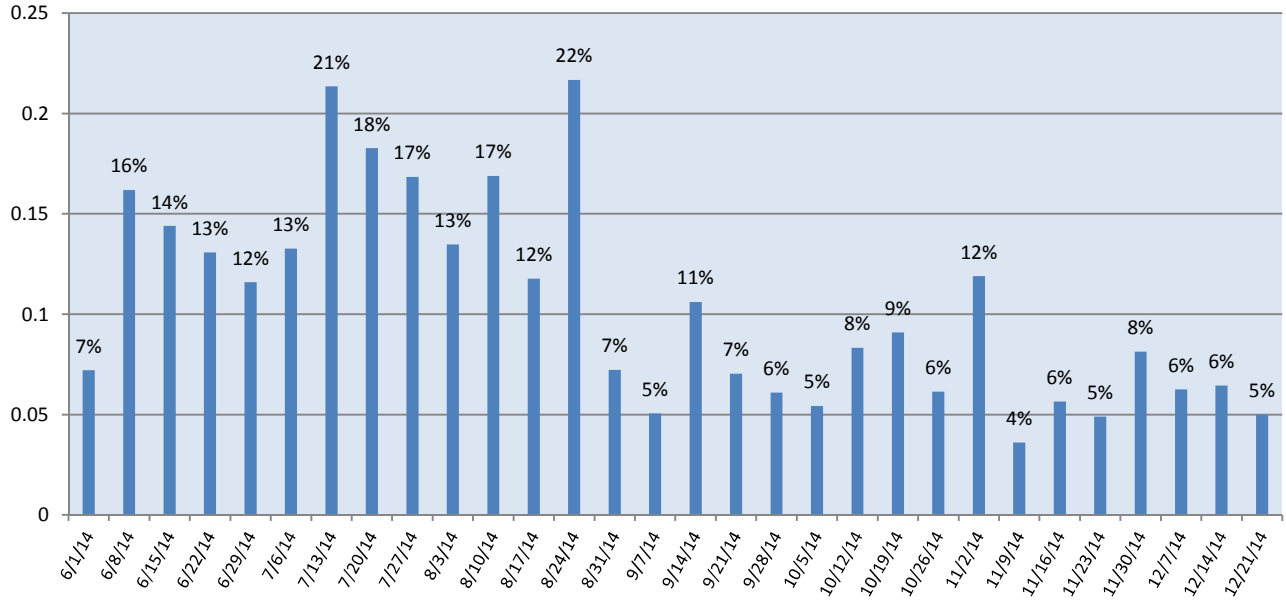
* B. pertussis/parapertussis and Enterovirus are tracked from December 30, 2013. RSV, Influenza, Parainfluenza, HRV, Adenovirus, and hMPV are tracked from September 22, 2014.

**Testing performed on RCH inpatients only.

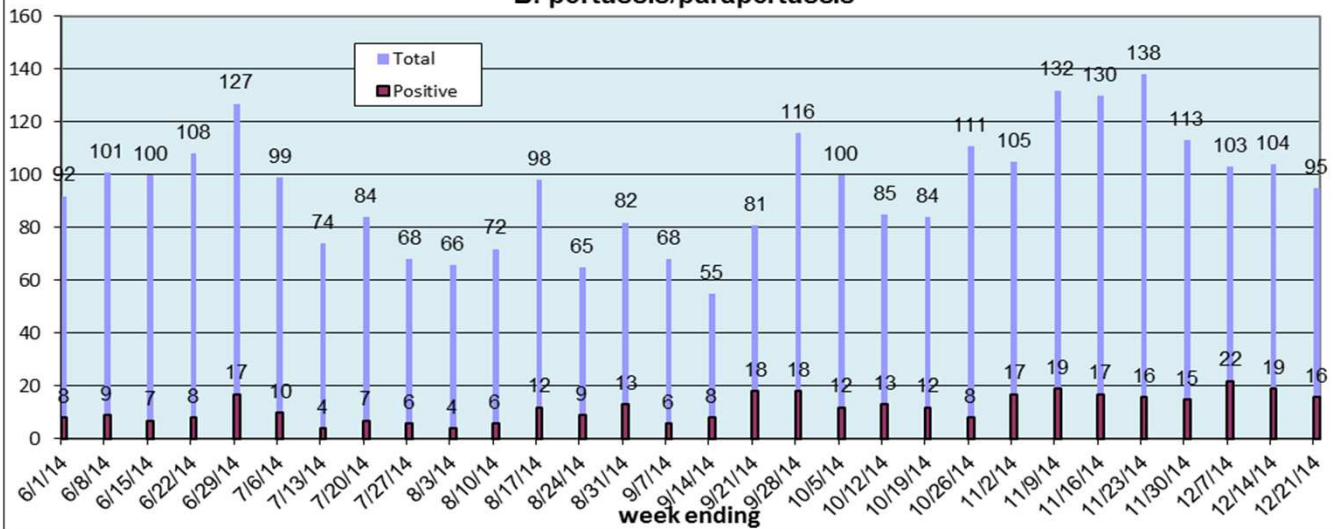


Pathogens Report

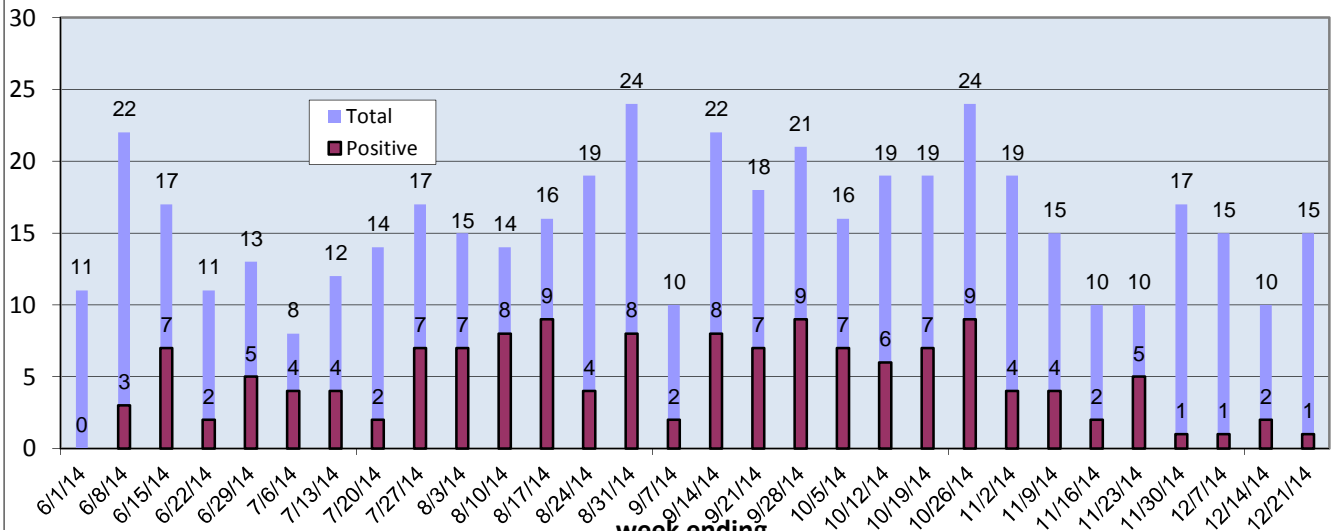
Bordetella % Positive



B. pertussis/parapertussis



Enterovirus, CSF



Pathogens Report

week ending