



INFLUENZA WATCH

The purpose of the weekly *Influenza Watch* is to summarize current influenza surveillance in San Diego County. *Please note that reported weekly data are preliminary and may change due to delayed submissions and additional laboratory results.*

Report Contents

- Page 1: Overview & Indicators
- Page 2: Virus Characteristics
- Pages 3-7: Trend graphs
- Page 7: Reporting Information

Current Week

Current Week 51 (ending 12/20/2014)

- 127 new influenza detections reported: *Expected level*
- 3% influenza-like-illness (ILI) among emergency department visits: *Expected level*
- 0 influenza-related deaths reported this week
- 5% of deaths registered with Pneumonia & Influenza: *Expected level*

Current Season Summary

396
Total Cases

10
ICU Cases

0
Deaths

Virus Characteristics

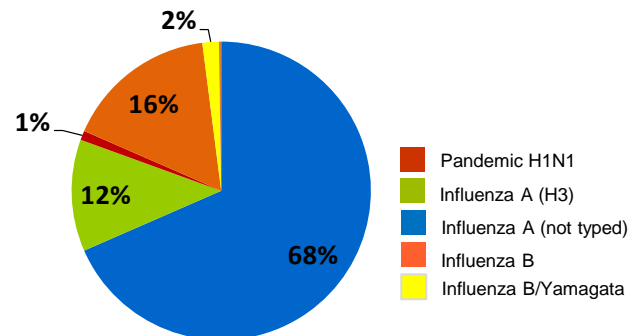


Table 1. Influenza Surveillance Indicators

Indicator	FY 2014-15			FY 2013-14		Prior 3-Year Average**	
	Week 51	Week 50	FYTD [#]	Week 51	FYTD [#]	Week 51	FYTD [#]
	All influenza detections reported (rapid or PCR)	127	85	396	82	207	40
Percent of emergency department visits for ILI*	3%	4%		3%		3%	
Percent of deaths registered with pneumonia and/or influenza	5%	7%		7%		7%	
Number of influenza-related deaths reported [^]	0	0	0	0	0	0.3	0.7

[#] FYTD=Fiscal year to date; FY is July 1-June 30 (Week 27-26). Total deaths reported in prior years: 70 in 2013-14, 65 in 2012-13, 14 in 2011-12.

* Previous weeks percentages may change due to delayed reporting.

** Includes FYs 2013-14, 2012-13, and 2011-12.

[^] Current FY deaths are shown by week of report; by week of death for prior FYs.

Influenza Antiviral Availability for the 2014-2015 Season

On December 22, 2014, the US Food and Drug Administration [announced](#) the approval of the antiviral drug peramivir (Rapivab[®]), making an intravenous medication available for adult influenza patients who have trouble taking an oral or inhaled antiviral. Peramivir is a neuraminidase inhibitor, like the licensed drugs oseltamivir (Tamiflu[®]), taken orally, and zanamivir (Relenza[®]), which is inhaled.

The manufacturer of Tamiflu[®] [reported](#) last week that the antiviral drug should be available in good supply this season, though local shortages may occur. If needed, pharmacies should work with authorized distributors to obtain additional supply of Tamiflu[®] capsules and Tamiflu[®] Oral Suspension. If Tamiflu[®] Oral Suspension is unavailable at a local pharmacy, pharmacists may mix Tamiflu[®] 75 mg capsules into an oral suspension (liquid) for those people who need it. The current healthcare provider instructions for dosing and compounding are found in the Tamiflu[®] package, and also may be accessed at http://www.tamiflu.com/hcp/resources/hcp_resources_pharmacists.jsp.

San Diego providers who become aware of any local shortages of influenza antiviral medications are encouraged to contact the Immunizations Program at (619) 692-8661. A summary of current antiviral medication use in influenza is available here: <http://www.cdc.gov/flu/professionals/antivirals/summary-clinicians.htm>.

Table 2. Influenza Detections Reported, FY 2014-15*

Positive Test Type/Subtype	Week 51	Total To-Date
Influenza A†	107	271
Influenza A(H1N1) Pandemic 2009	0	4
Influenza A (H3) Seasonal	8	48
Influenza B†	12	65
Influenza B/Yamagata	0	7
Influenza A/B†	0	1
Total	127	396

* FY is July 1- June 30, or Week 27 - 26.

† No further characterization performed or results not available at time of publication.

Note: Totals may change due to further laboratory findings.

Influenza Watch

Figure 1. Percent of Emergency Department Visits for Influenza-like-Illness by Week and FY

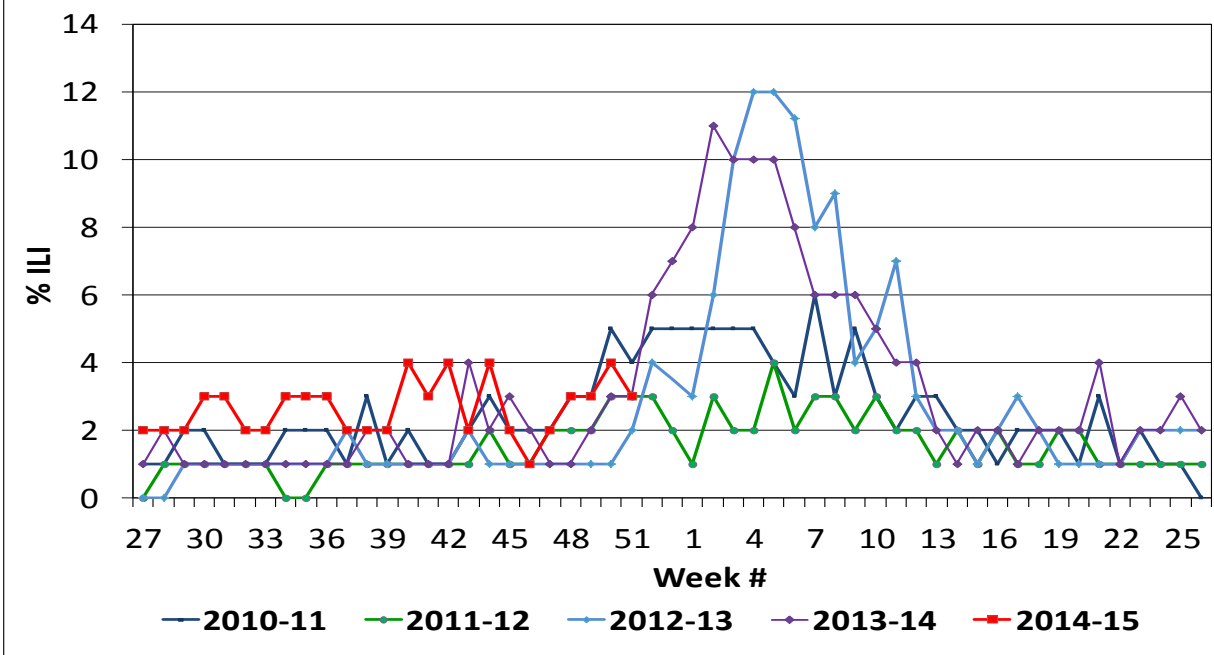
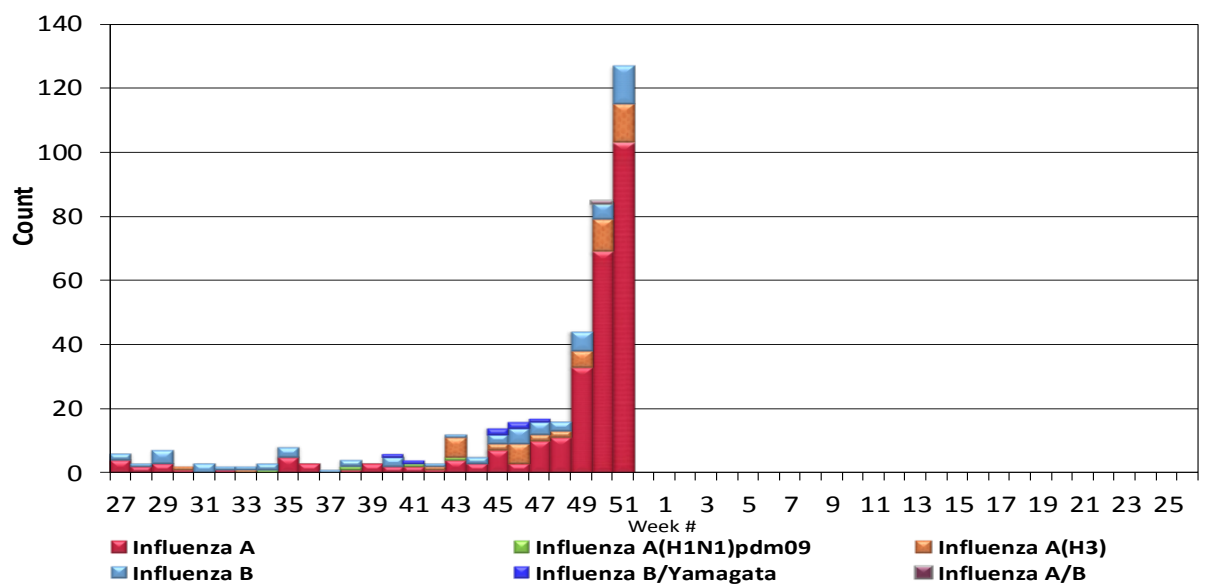


Figure 2. San Diego County Influenza Detections by Type and Week of Report, 2014-15 FYTD (N=396)



Influenza Watch

Figure 3. Percent of Reported Influenza Cases by Age Group and Season, 2009-10 to 2014-15 FYTD

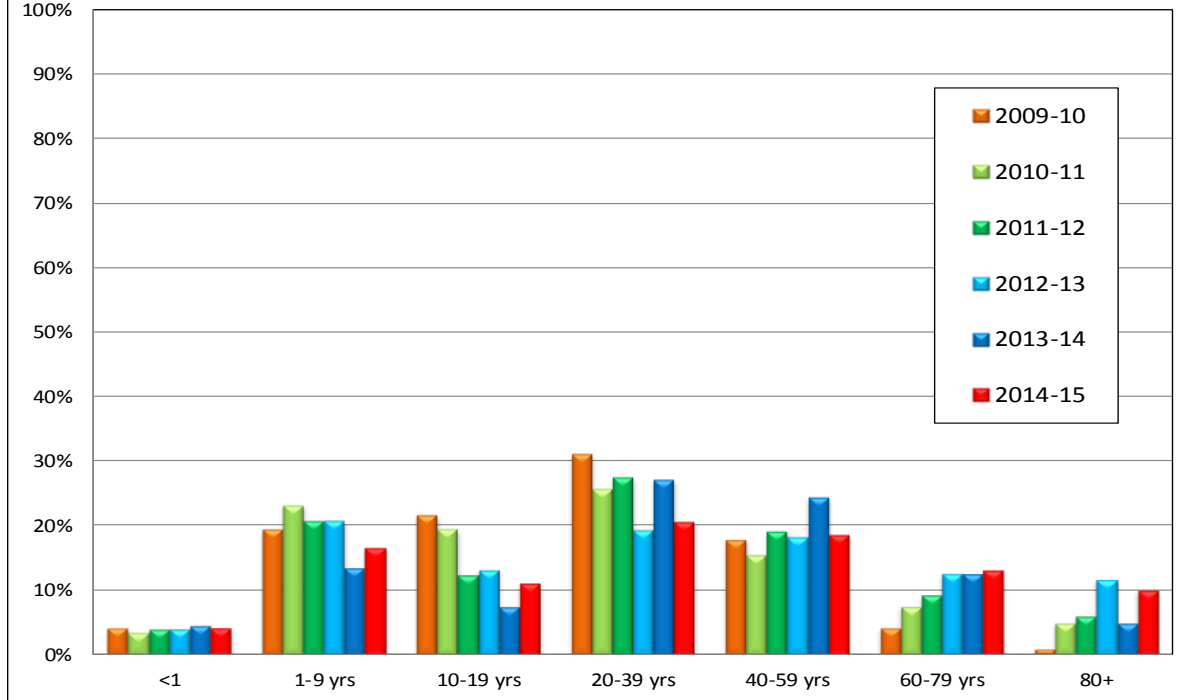


Figure 4. Cumulative Influenza Case Reports by Week & Season

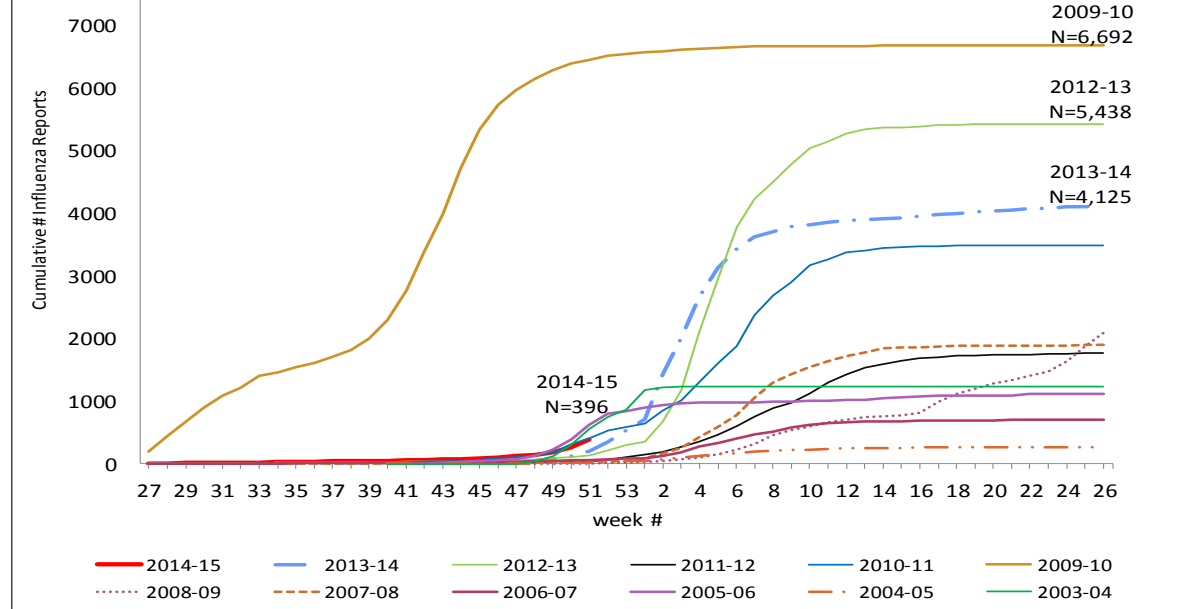


Figure 5. Percent of San Diego County Emergency Department Visits for Influenza-like-Illness by Week and FY Compared to 5-Year Baseline & Upper 95% Threshold Values (Serfling Method)

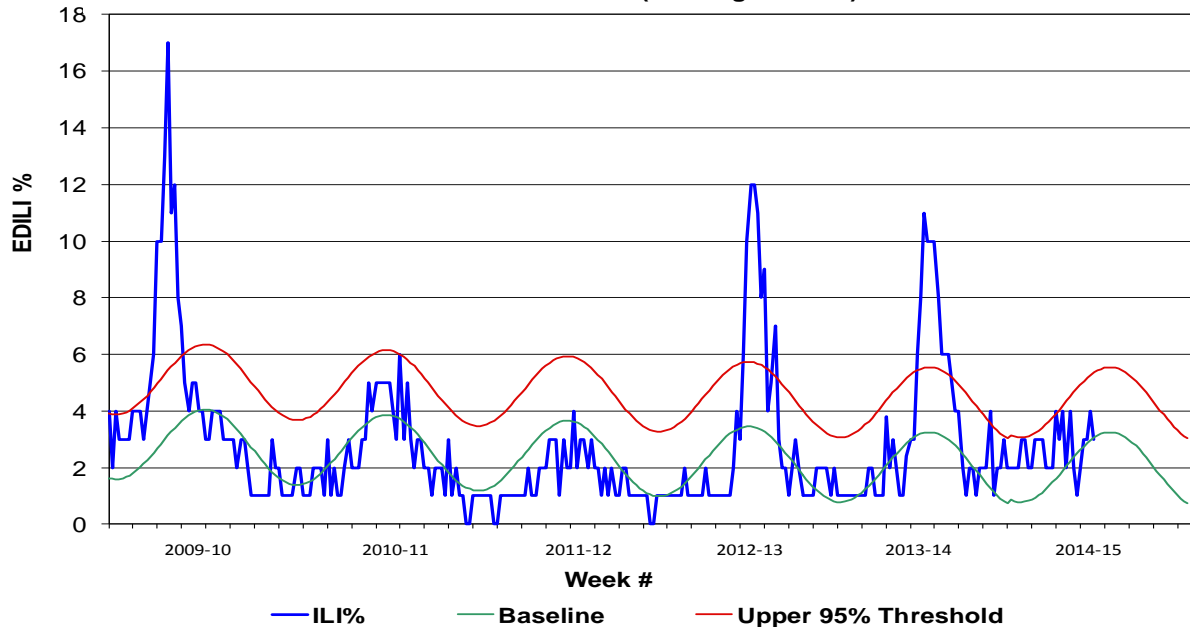


Figure 6. Percent of All San Diego County Deaths Registered with Pneumonia and/or Influenza by Week and FY Compared to Prior 5-Year Baseline & Upper 95% Threshold (Serfling Method)

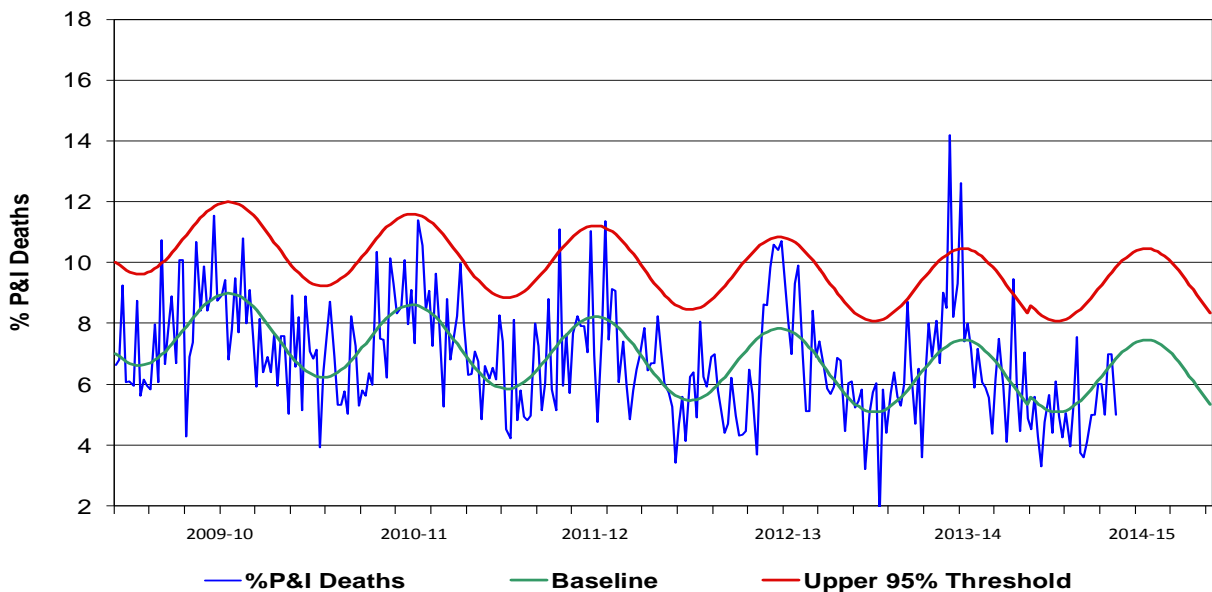


Figure 7. Influenza Deaths by Type and Season

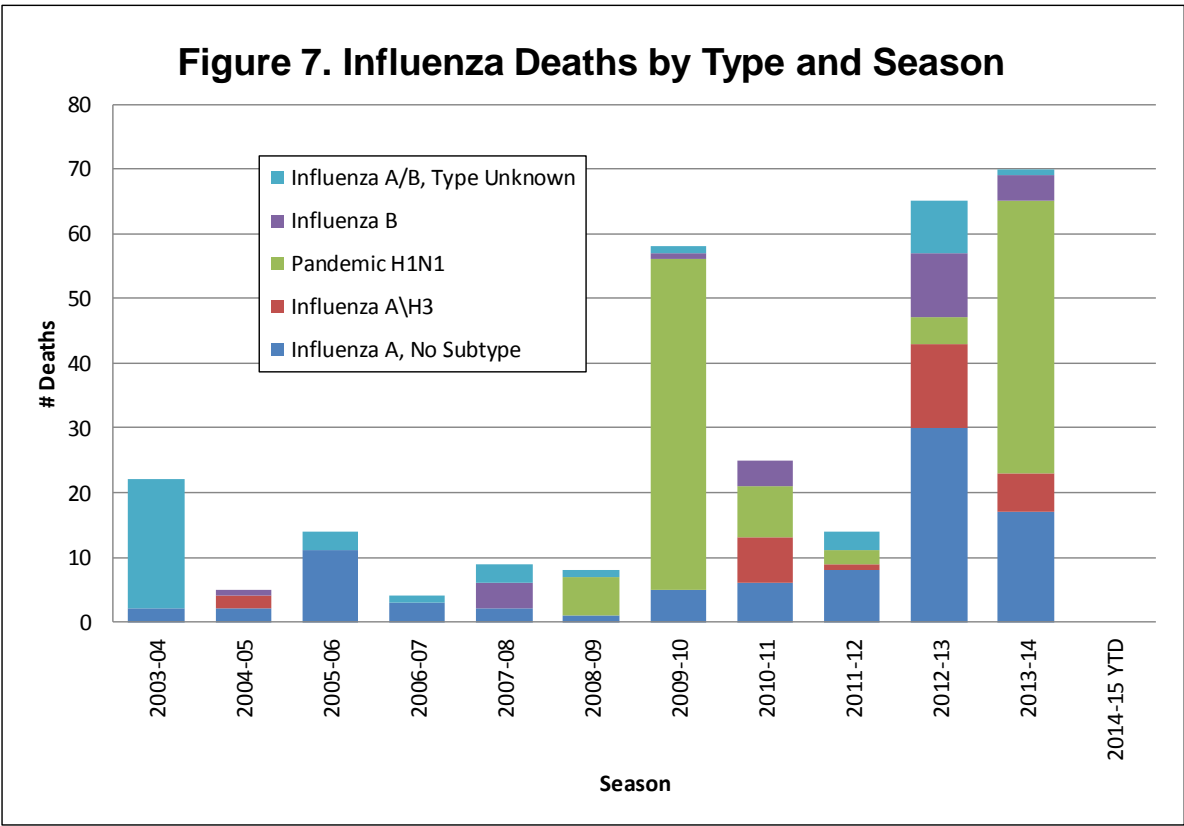


Figure 8. Influenza Deaths by Age and Season

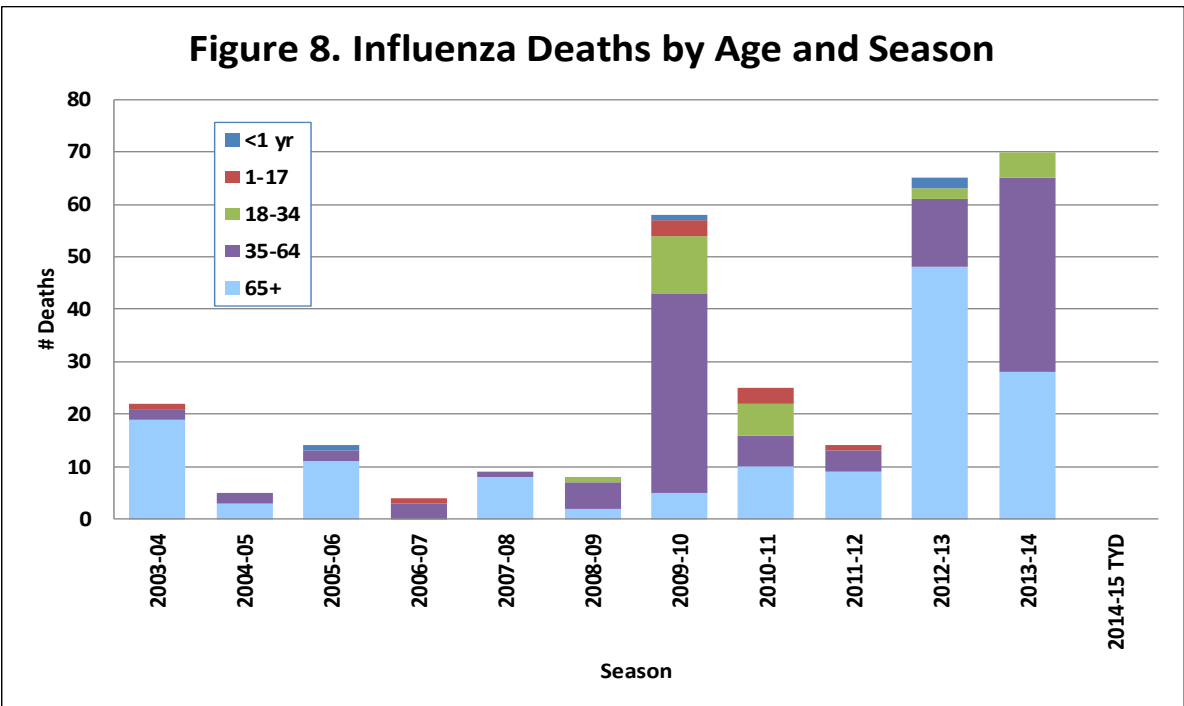
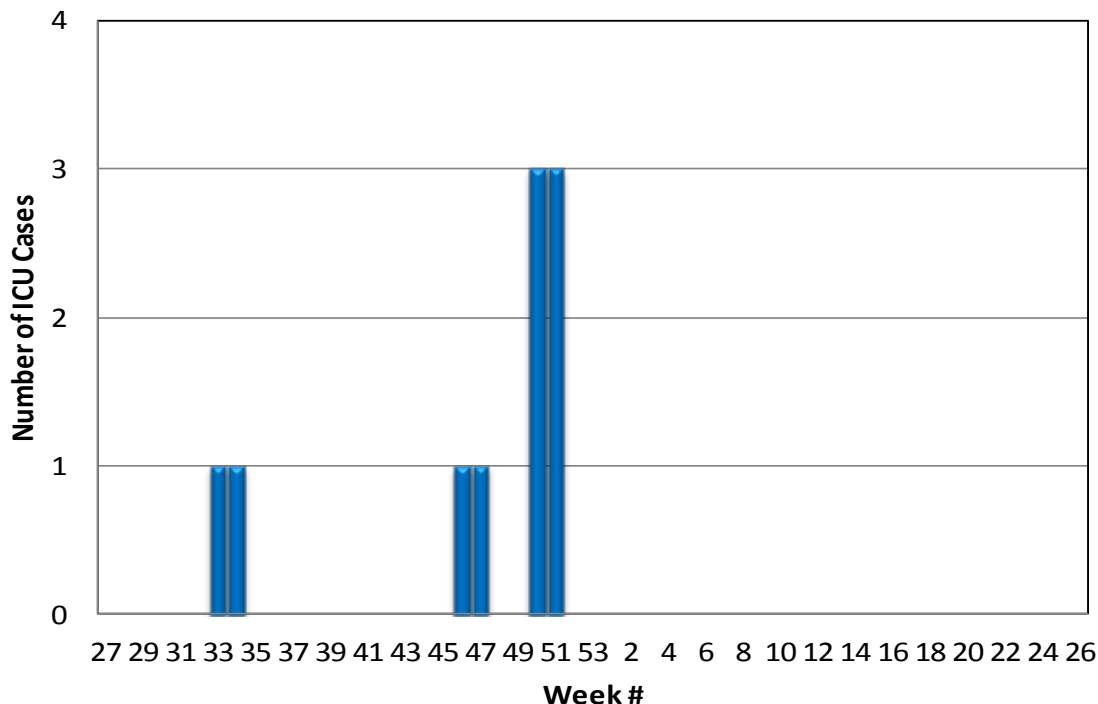


Figure 9. Number of Influenza Cases Requiring ICU Care by Week Reported, 2014-15



State and U.S. Status Reports

- CA Department of Public Health [Influenza](#)
- CDC Influenza Surveillance [Weekly Report](#)

Influenza Reporting Local providers are encouraged to report any laboratory positive influenza detections to the County’s Epidemiology Program by **FAX to (858) 715-6458**. Please fax a [Case Report Form](#) and/or a printed laboratory result. If known, please indicate if patient was admitted to ICU or died. For questions regarding sending specimens to Public Health Laboratory (PHL), call (619) 692-8500. Click here for the updated PHL [PCR Test Request Form](#). Contact Epidemiology with any questions at **(619) 692-8499** or EpiDiv.HHSA@sdcounty.ca.gov.

Immunization Resources County of San Diego Immunization Branch www.sdiz.org