



INFLUENZA WATCH

The purpose of the weekly *Influenza Watch* is to summarize current influenza surveillance in San Diego County. *Please note that reported weekly data are preliminary and may change due to delayed submissions and additional laboratory results.*

Report Contents

- Page 1: Overview & Indicators
- Page 2: Virus Characteristics
- Pages 3-7: Trend graphs
- Page 7: Reporting Information

Current Week

Current Week 53 (ending 1/3/2015)

- 302 new influenza detections reported: *Elevated*
- 7% influenza-like-illness (ILI) among emergency department visits: *Elevated*
- 0 influenza-related deaths reported this week
- 7% of deaths registered with Pneumonia & Influenza: *Expected level*

Current Season Summary

919

Total Cases

22

ICU Cases

0

Deaths

Virus Characteristics

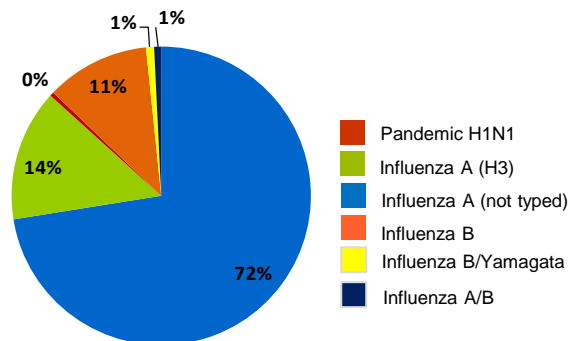


Table 1. Influenza Surveillance Indicators

Indicator	FY 2014-15			FY 2013-14		Prior 3-Year Average**	
	Week 53	Week 52	FYTD#	Week 53~	FYTD#	Week 53~	FYTD#
All influenza detections reported (rapid or PCR)	302	213	919	256	535	133	313
Percent of emergency department visits for ILI*	7%	6%		7%		4%	
Percent of deaths registered with pneumonia and/or influenza	7%	5%		7%		6%	
Number of influenza-related deaths reported^	0	0	0	3	3	0.5	1.4

FYTD=Fiscal year to date; FY is July 1-June 30 (Week 27-26). Total deaths reported in prior years: 70 in 2013-14, 65 in 2012-13, 14 in 2011-12.

* Previous weeks percentages may change due to delayed reporting.

** Includes FYs 2013-14, 2012-13, and 2011-12.

^ Current FY deaths are shown by week of report; by week of death for prior FYs.

-Week 53 data for prior years is an average of week 52 and week 1, since no week 53 comparison exists.

First San Diego Influenza Deaths

Two local nursing home residents are the first influenza fatalities reported for the 2014-2015 season in San Diego. An 88-year-old woman died on January 4 after a brief hospitalization and laboratory testing confirmed influenza A(H3). An 85-year-old woman who was positive for influenza A (type results pending) died on January 6 after admission to a local hospital. Both women had underlying medical conditions. One had been vaccinated for influenza this season and the other had not received the influenza vaccine. Because these deaths occurred in Week 1 of 2015, they are not reflected in the tables and graphs of this Influenza Watch issue.

Institutional Influenza Outbreak Control

An institutional influenza outbreak is defined as at least one case of laboratory confirmed influenza in the setting of a cluster (≥ 2) cases of influenza like illness (ILI) within a 72 hour period. Infection prevention measures for influenza include vaccinating all residents and staff annually for influenza, monitoring for cases during the flu season, testing individuals with ILI for influenza, and excluding ill staff and visitors from the facility. When an institutional outbreak does occur, antiviral treatment should be given immediately to all individuals with ILI without waiting for laboratory confirmation and antiviral chemoprophylaxis should be given to all non-ill residents regardless of vaccination status. Chemoprophylaxis should also be considered for unvaccinated staff providing care to high risk patients and for all staff if the outbreak is caused by a strain of influenza virus that is not well matched by the vaccine. The Centers for Disease Control and Prevention [noted this week](#) that 68.3% of tested influenza A(H3) strains did not match this year's seasonal vaccine component, but the H1N1 and B strain components are well matched.

The California Department of Public Health [Influenza and Other Respiratory Illness Outbreak Quicksheet](#) provides detailed information about outbreak control in institutional settings. All influenza outbreaks must be [reported](#) to public health. Assistance with infection control measures is available to providers by contacting the County Epidemiology Program at (619) 692-8499 Monday-Friday 8AM-5PM, and (858) 565-5255 after hours and on weekends.

Table 2. Influenza Detections Reported, FY 2014-15*

Positive Test Type/Subtype	Week 53	Total To-Date
Influenza A†	246	666
Influenza A(H1N1) Pandemic 2009	0	4
Influenza A (H3) Seasonal	32	131
Influenza B†	21	103
Influenza B/Yamagata	1	8
Influenza A/B†	2	7
Total	302	919

* FY is July 1 - June 30, or Week 27 - 26.

† No further characterization performed or results not available at time of publication.

Note: Totals may change due to further laboratory findings.

Influenza Watch

Figure 1. Percent of Emergency Department Visits for Influenza-like-Illness by Week and FY

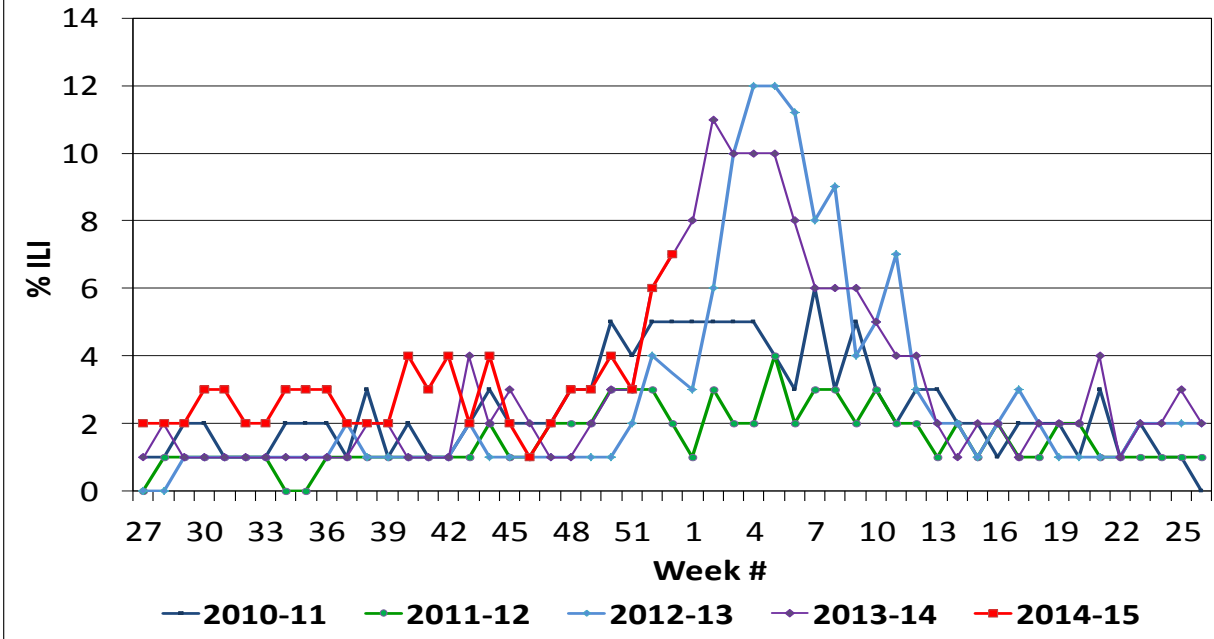
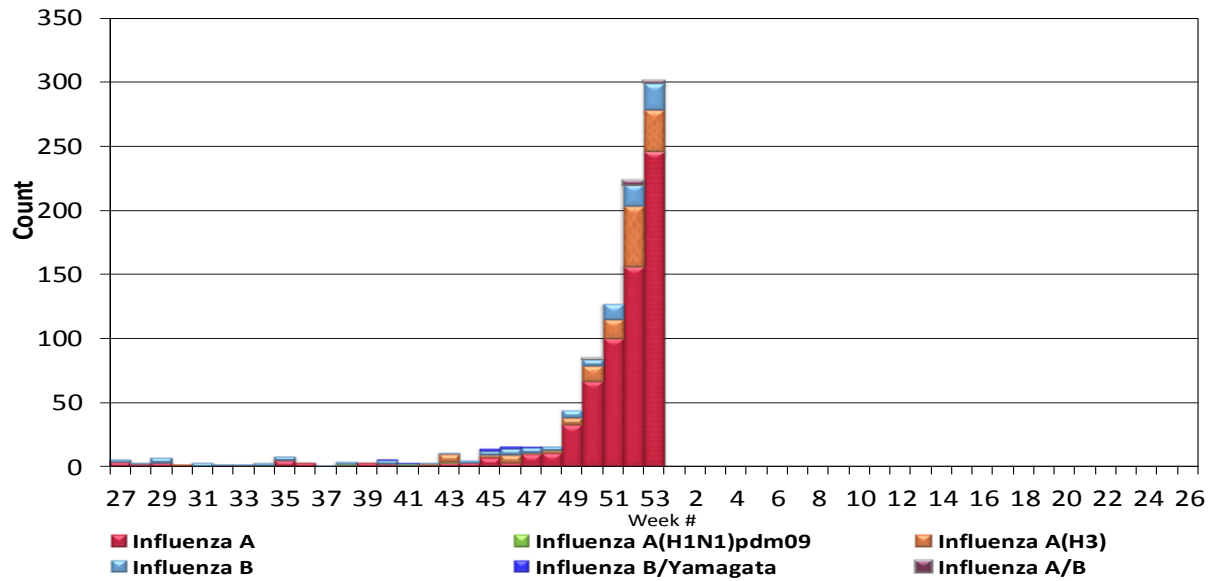


Figure 2. San Diego County Influenza Detections by Type and Week of Report, 2014-15 FYTD (N=919)



Influenza Watch

Figure 3. Percent of Reported Influenza Cases by Age Group and Season, 2009-10 to 2014-15 FYTD

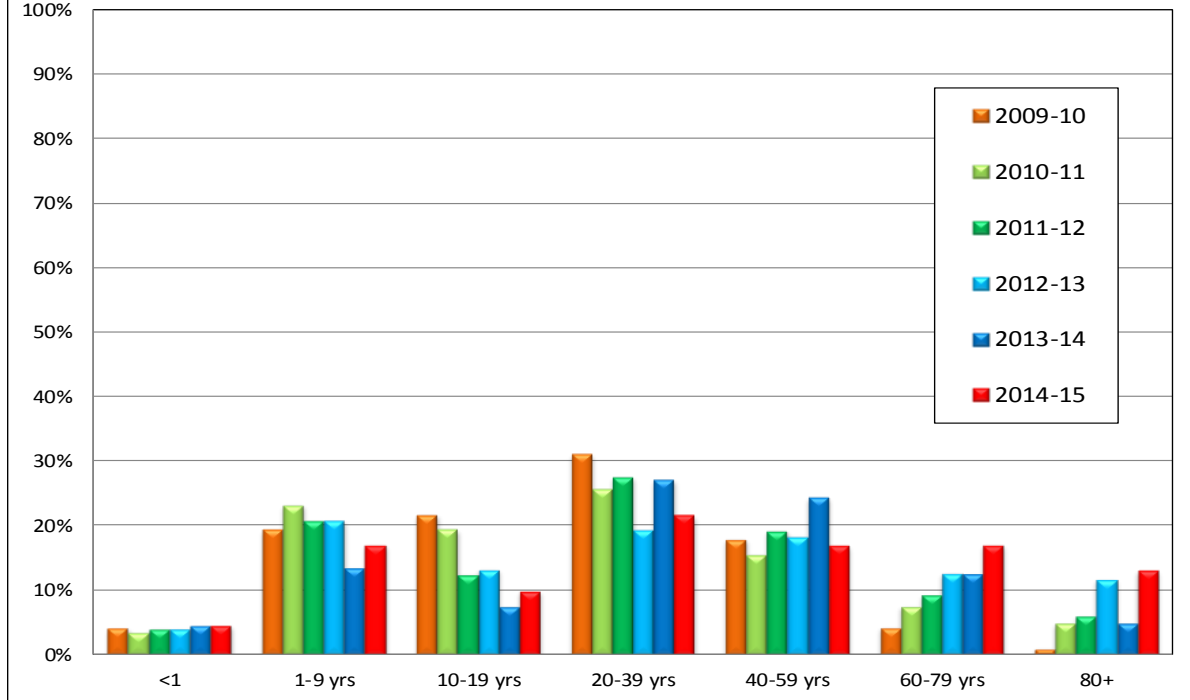
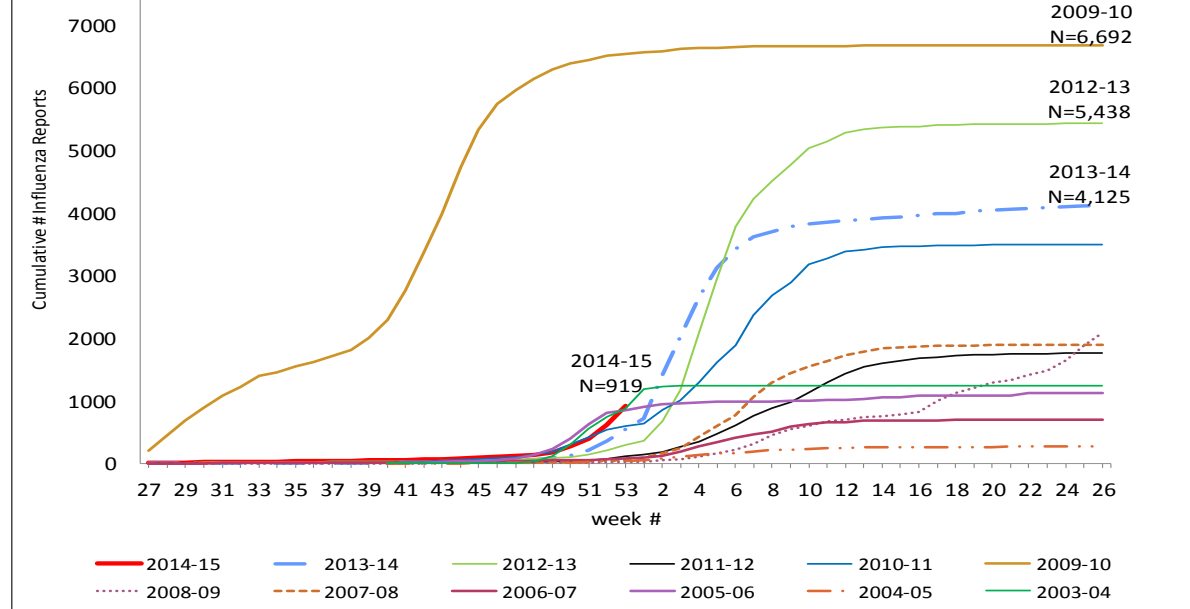


Figure 4. Cumulative Influenza Case Reports by Week & Season



Influenza Watch

Figure 5. Percent of San Diego County Emergency Department Visits for Influenza-like-Illness by Week and FY Compared to 5-Year Baseline & Upper 95% Threshold Values (Serfling Method)

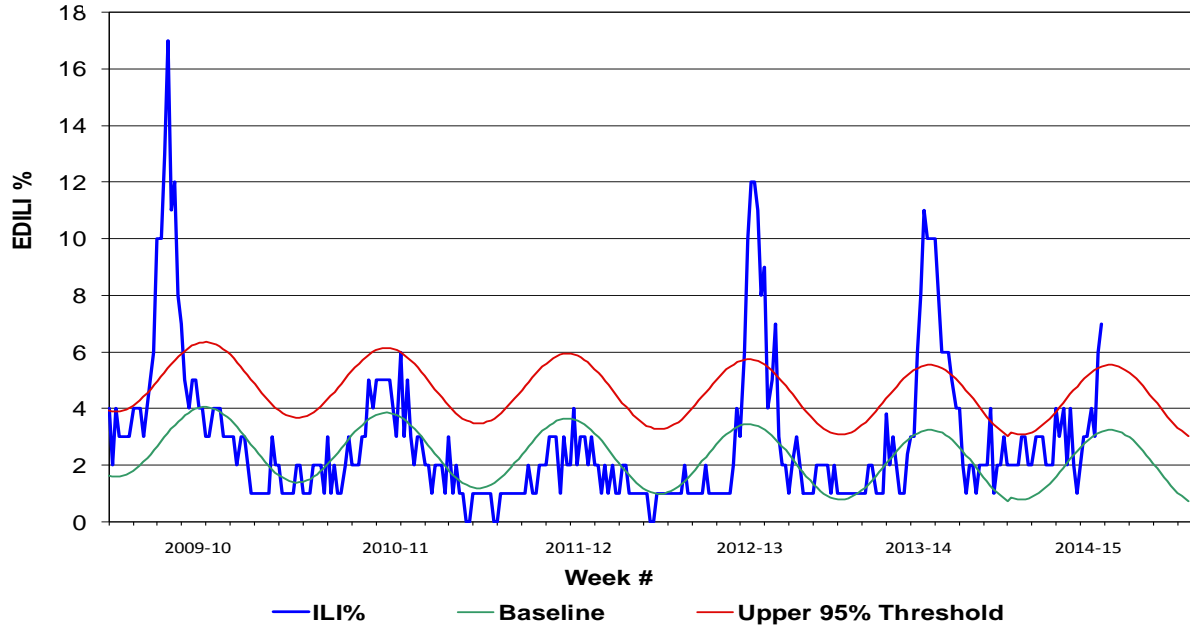
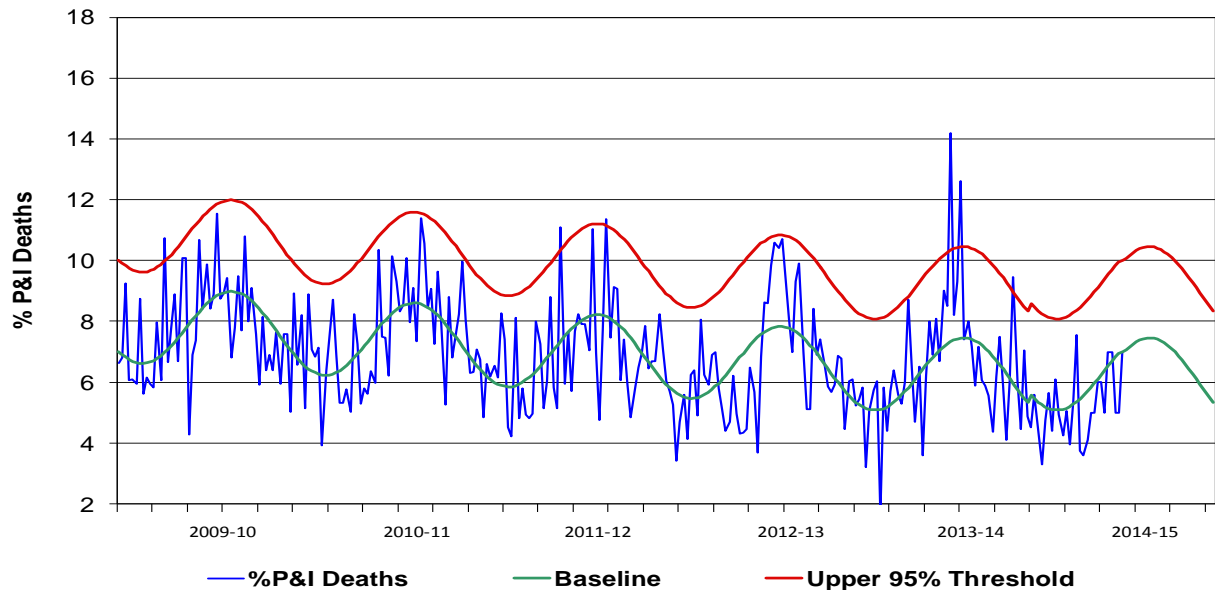


Figure 6. Percent of All San Diego County Deaths Registered with Pneumonia and/or Influenza by Week and FY Compared to Prior 5-Year Baseline & Upper 95% Threshold (Serfling Method)



Influenza Watch

Figure 7. Influenza Deaths by Type and Season

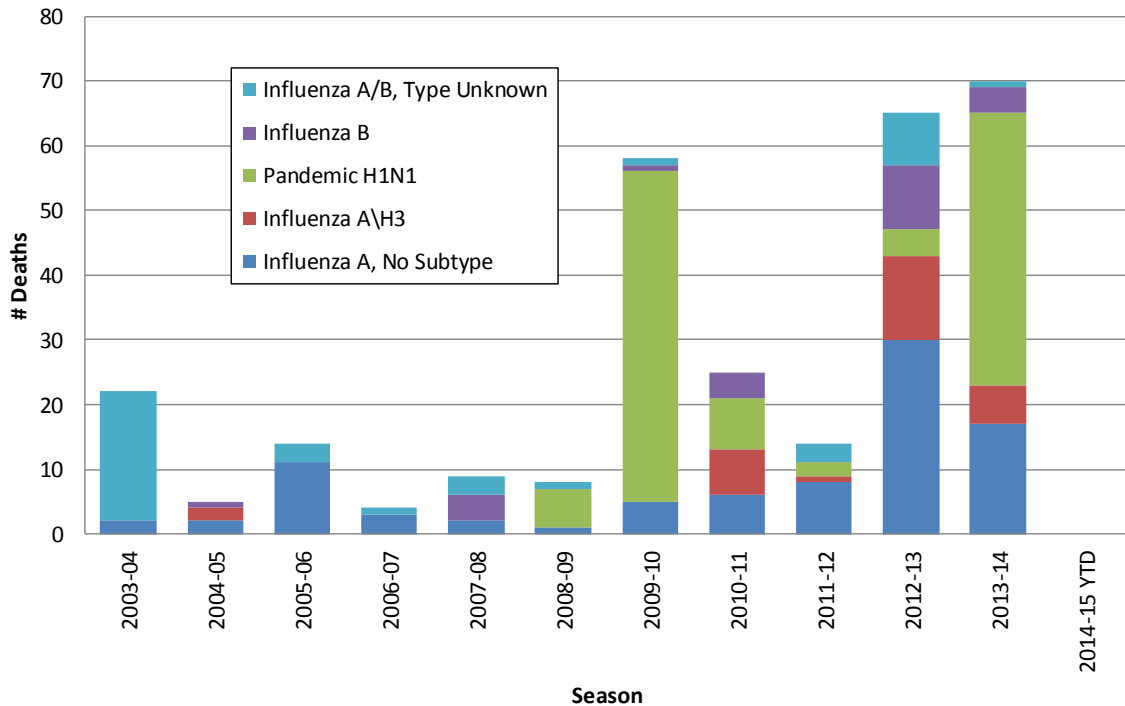


Figure 8. Influenza Deaths by Age and Season

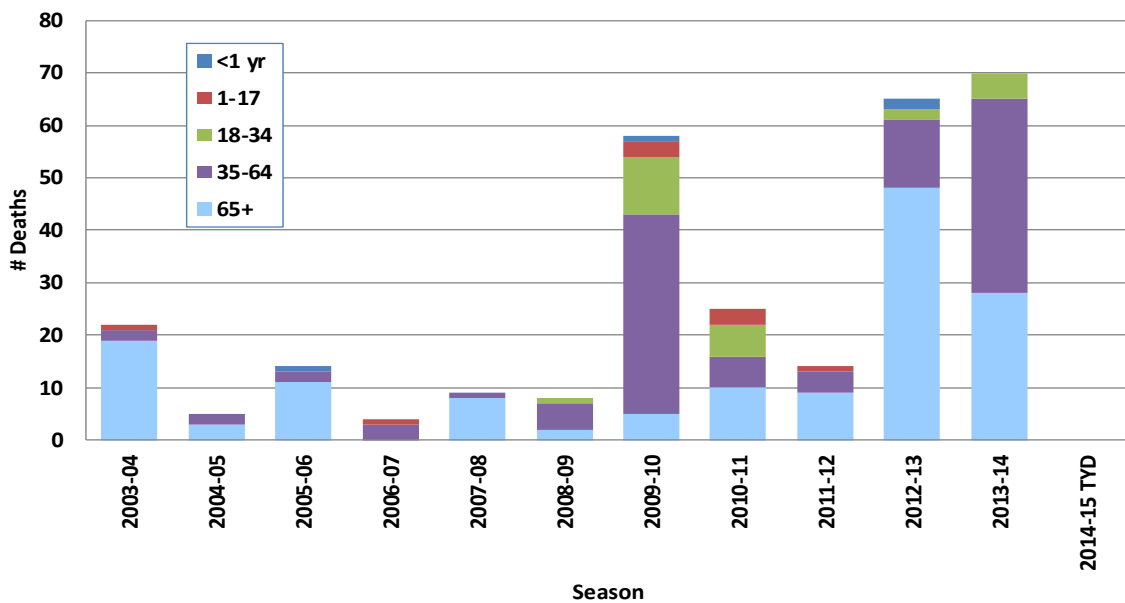
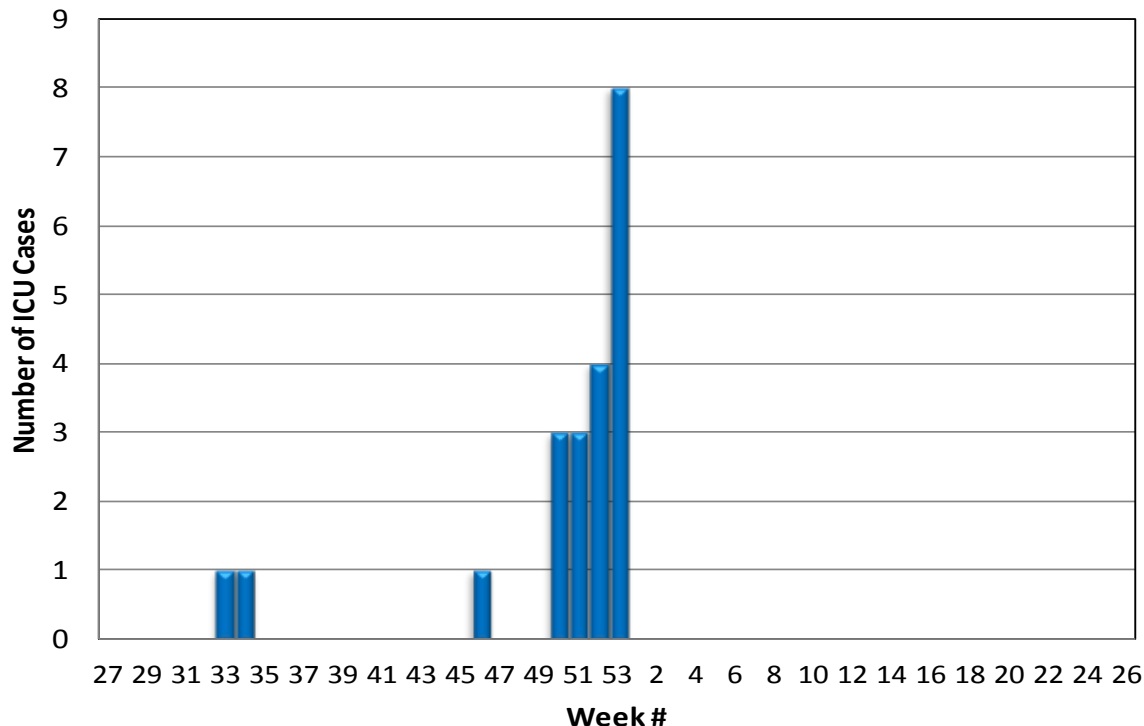


Figure 9. Number of Influenza Cases Requiring ICU Care by Week Reported, 2014-15



State and U.S. Status Reports

- CA Department of Public Health [Influenza](#)
- CDC Influenza Surveillance [Weekly Report](#)

Influenza Reporting Local providers are encouraged to report any laboratory positive influenza detections to the County’s Epidemiology Program by **FAX to (858) 715-6458**. Please fax a [Case Report Form](#) and/or a printed laboratory result. If known, please indicate if patient was admitted to ICU or died. For questions regarding sending specimens to Public Health Laboratory (PHL), call (619) 692-8500. Click here for the updated PHL [PCR Test Request Form](#). Contact Epidemiology with any questions at **(619) 692-8499** or EpiDiv.HHSA@sdcounty.ca.gov.

Immunization Resources County of San Diego Immunization Branch www.sdiz.org