



# Influenza Watch

April 9, 2014

Week #14, ending 4/5/14



The purpose of the weekly *Influenza Watch* is to summarize current influenza surveillance in San Diego County. **Please note that reported weekly data are preliminary and may change due to delayed submissions and additional laboratory results.**

## Current Week 14 (ending 4/5/2014)

- 18 influenza detections reported for Week 14: *Expected level*
- 3,857 total influenza detections reported to date
- 1% influenza-like-illness (ILI) among emergency department visits: *Expected level*
- 0 influenza-related death reported this week
- 6% of deaths registered with Pneumonia & Influenza: *Expected level*

## Current Status

- Influenza activity is decreasing.
- CA Department of Public Health [Influenza Surveillance](#)
- CDC Influenza Surveillance [Weekly Report](#)

**Table 1. Influenza Detections Reported, FY 2013-14\***

| Positive Test Type/Subtype | Week 14   | Total To-Date |
|----------------------------|-----------|---------------|
| Influenza A <sup>†</sup>   | 4         | 3,223         |
| Influenza A (H1) Seasonal  | 0         | 0             |
| Influenza A (H3) Seasonal  | 0         | 59            |
| Pandemic 2009 H1N1         | 0         | 376           |
| Influenza B                | 14        | 162           |
| Influenza A/B <sup>†</sup> | 0         | 37            |
| <b>Total</b>               | <b>18</b> | <b>3,857</b>  |

\* FY is July 1 - June 30, or Week 27 - 26.

† No further characterization performed or results not available at time of publication.

Note: Totals may change due to further laboratory findings.

5,438 total influenza detections were reported in 2012-13

**Table 2. Influenza Surveillance Indicators**

| Indicator   | FY 2013-14 |         |                   | FY 2012-13 |                   | Prior 3-Year Average** |                   |
|---|------------|---------|-------------------|------------|-------------------|------------------------|-------------------|
|   | Week 14    | Week 13 | FYTD <sup>#</sup> | Week 14    | FYTD <sup>#</sup> | Week 14                | FYTD <sup>#</sup> |
| Influenza detections reported (all types, rapid and/or lab confirmed) | 18         | 15      | 3,857             | 24         | 5,370             | 41                     | 3,475             |
| Percent of emergency department visits for ILI*                       | 1%         | 2%      |                   | 2%         |                   | 2%                     |                   |
| Percent of deaths registered with pneumonia and/or influenza          | 6%         | 6%      |                   | 7%         |                   | 8%                     |                   |
| Number of influenza-related deaths reported <sup>^</sup>              | 0          | 1       | 56                | 0          | 63                | 0.0                    | 32.3              |

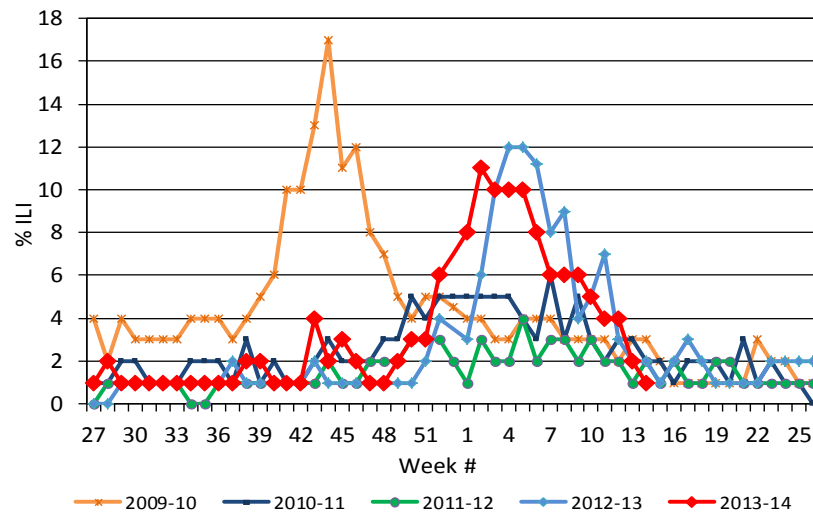
<sup>#</sup> FYTD=Fiscal year to date; FY is July 1-June 30 (Week 27-26). Total deaths reported in prior years: 65 in 2012-13, 14 in 2011-12, and 24 in 2010-11.

\* Previous weeks percentages may change due to delayed reporting.

\*\* Includes FYs 2010-11, 2011-12, and 2012-13.

<sup>^</sup> Current FY deaths are shown by week of report; by week of death for prior FYs.

**Figure 1. Percent of Emergency Department Visits for Influenza-like-Illness by Week and FY**



## Influenza Reporting

Local providers are encouraged to report any laboratory positive influenza detections to the County's Epidemiology Program by **FAX to (858) 715-6458**. Please fax a [Case Report Form](#) and/or a printed laboratory result. If known, please indicate if patient was admitted to ICU or died. For questions regarding sending specimens to Public Health Laboratory (PHL), call (619) 692-8500. Click here for the updated PHL [PCR Test Request Form](#). Contact Epidemiology with any questions at **(619) 692-8499** or [EpiDiv.HHSA@sdcounty.ca.gov](mailto:EpiDiv.HHSA@sdcounty.ca.gov).

## Immunization Resources

County of San Diego Immunization Branch  
[www.sdiz.org](http://www.sdiz.org)

Influenza surveillance is a collaborative effort between the County of San Diego Epidemiology and Immunization Services Branch and the medical community. Thank you!



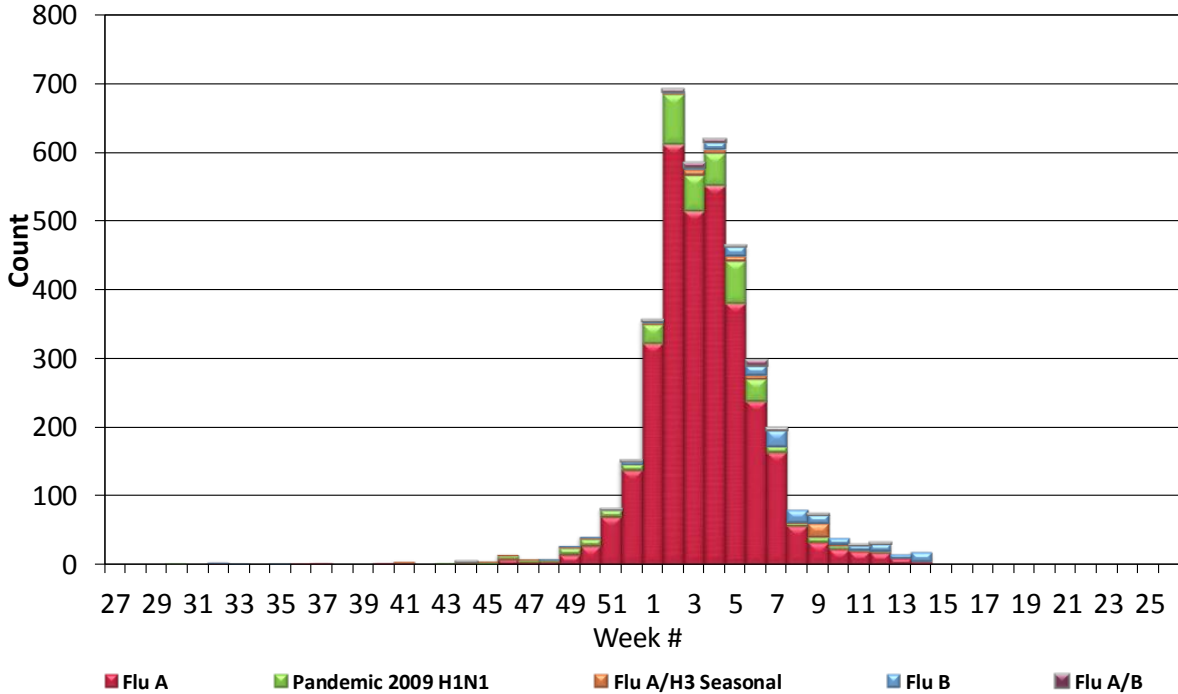
# Influenza Watch

April 9, 2014

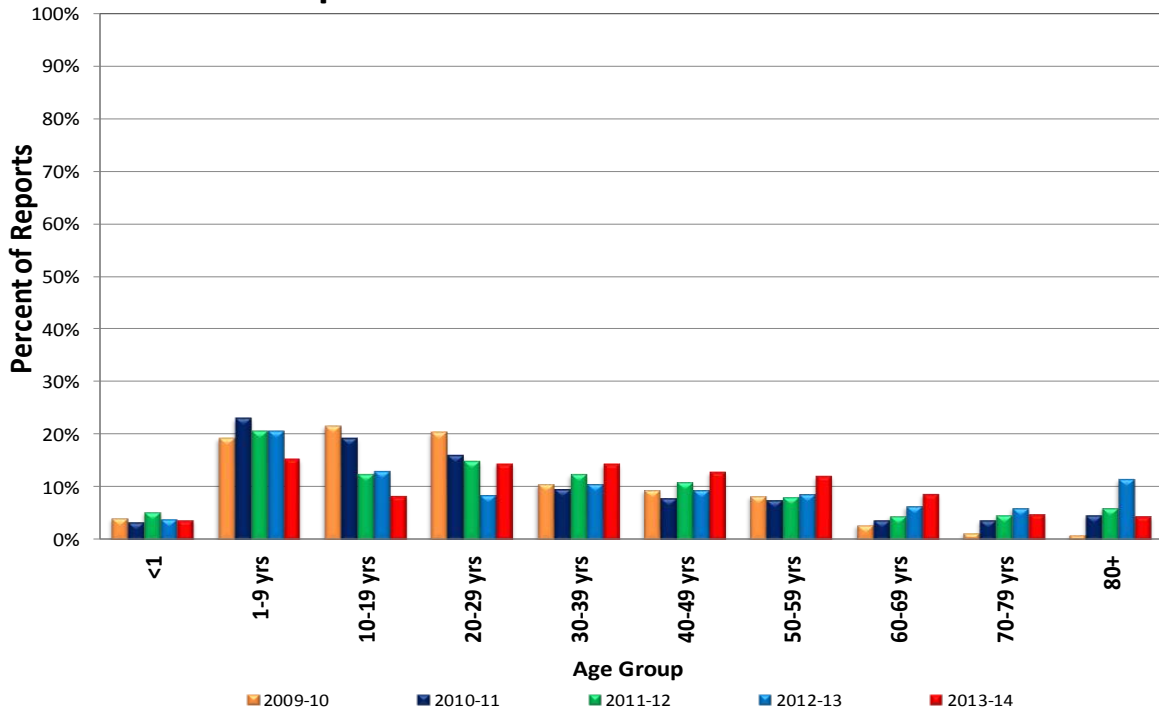
Week #14, ending 4/5/14



### Figure 2. San Diego County Influenza Detections by Type and Week of Report, 2013-14 FYTD (N=3,857)



### Figure 3. Percent of Reported Influenza Cases by Age Group and Fiscal Year Total vs. 2013-14 FYTD





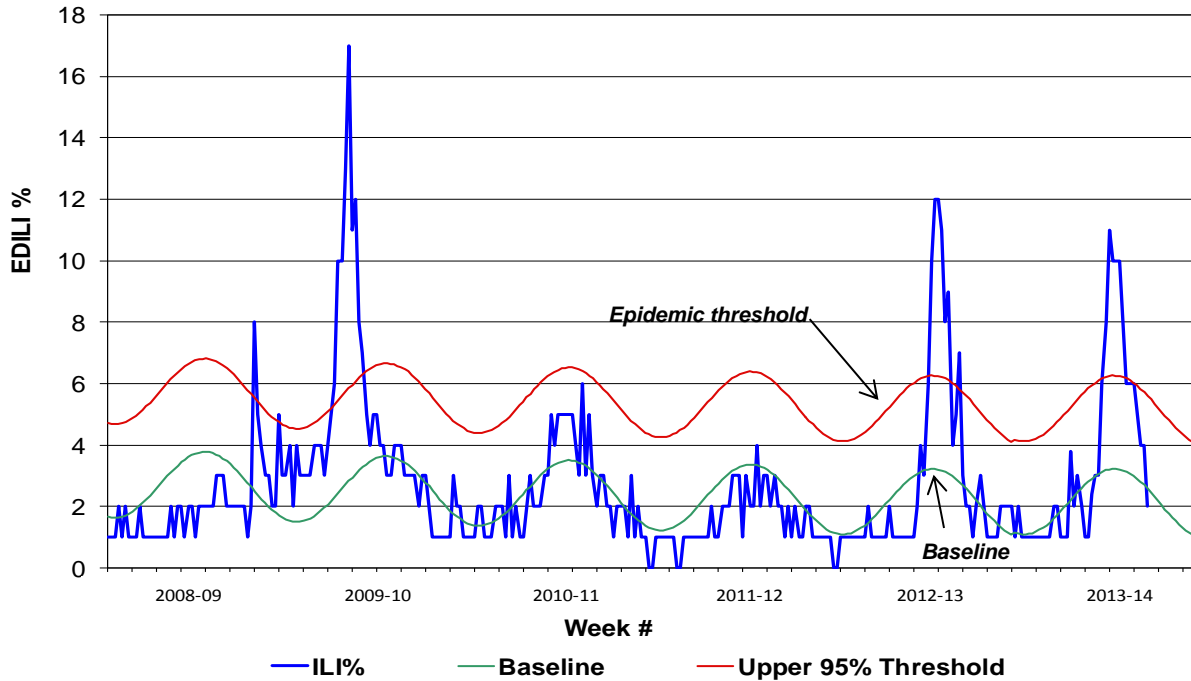
# Influenza Watch



April 9, 2014

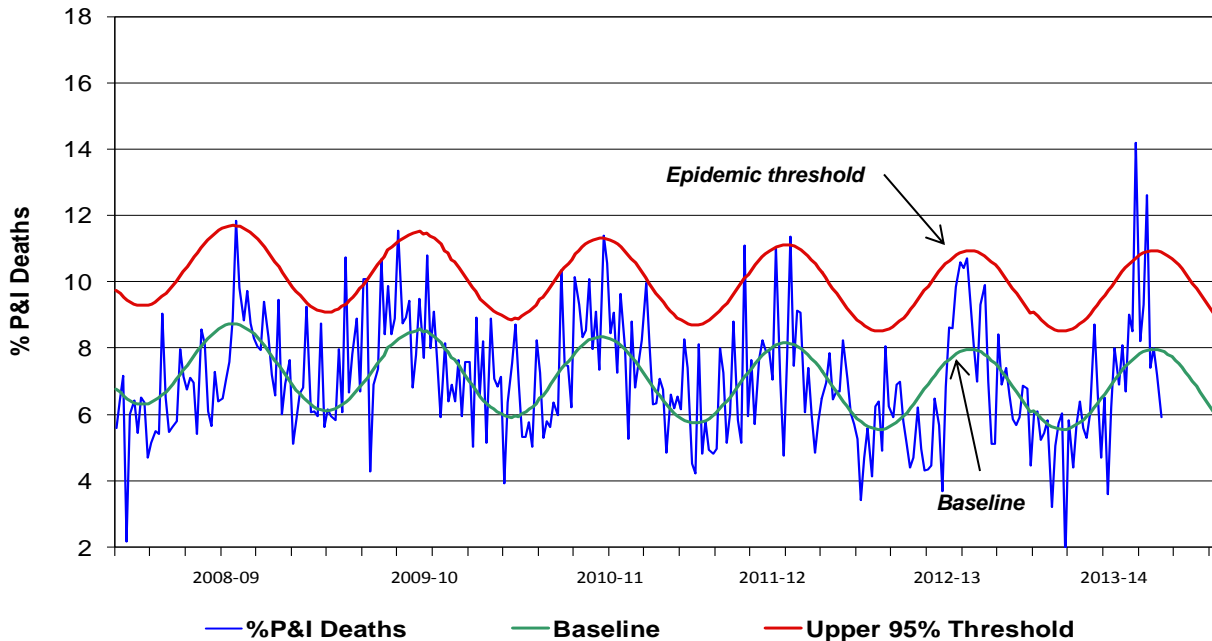
Week #14, ending 4/5/14

**Figure 4. Percent of San Diego County Emergency Department Visits for Influenza-like-Illness by Week and FY Compared to 5-Year Baseline & Upper 95% Threshold Values (Serfling Method)**



Note: Influenza-like-illness is defined as fever  $\geq 100^{\circ}\text{F}$ , and cough and/or sore throat.

**Figure 5. Percent of All San Diego County Deaths Registered with Pneumonia and/or Influenza by Week and FY Compared to Prior 5-Year Baseline & Upper 95% Threshold (Serfling Method)**



Note: Includes any death certificates registered with pneumonia and/or influenza listed anywhere on the death certificate.