



# Influenza Watch

March 26, 2014

Week #12, ending 3/22/14



The purpose of the weekly *Influenza Watch* is to summarize current influenza surveillance in San Diego County. **Please note that reported weekly data are preliminary and may change due to delayed submissions and additional laboratory results.**

## Current Week 12 (ending 3/22/2014)

- 8 influenza detections reported for Week 12: *Expected level*
- 3,800 total influenza detections reported to date
- 4% influenza-like-illness (ILI) among emergency department visits: *Expected level*
- 2 influenza-related deaths reported this week
- 7% of deaths registered with Pneumonia & Influenza: *Expected level*

## Current Status

- Influenza activity is decreasing.
- CA Department of Public Health [Influenza Surveillance](#)
- CDC Influenza Surveillance [Weekly Report](#)

**Table 1. Influenza Detections Reported, FY 2013-14\***

Positive Test Type/Subtype	Week 12	Total To-Date
Influenza A <sup>†</sup>	6	3,198
Influenza A (H1) Seasonal	0	0
Influenza A (H3) Seasonal	0	59
Pandemic 2009 H1N1	1	375
Influenza B	1	133
Influenza A/B <sup>†</sup>	0	35
<b>Total</b>	<b>8</b>	<b>3,800</b>

\* FY is July 1 - June 30, or Week 27 - 26.

† No further characterization performed or results not available at time of publication.

Note: Totals may change due to further laboratory findings.

5,438 total influenza detections were reported in 2012-13

**Table 2. Influenza Surveillance Indicators**

Indicator	FY 2013-14			FY 2012-13		Prior 3-Year Average**	
	Week 12	Week 11	FYTD <sup>#</sup>	Week 12	FYTD <sup>#</sup>	Week 12	FYTD <sup>#</sup>
Influenza detections reported (all types, rapid and/or lab confirmed)	8	29	3,800	126	5,285	122	3,368
Percent of emergency department visits for ILI*	4%	4%		3%		3%	
Percent of deaths registered with pneumonia and/or influenza	7%	6%		9%		9%	
Number of influenza-related deaths reported <sup>^</sup>	2	2	55	1	60	1.0	31.0

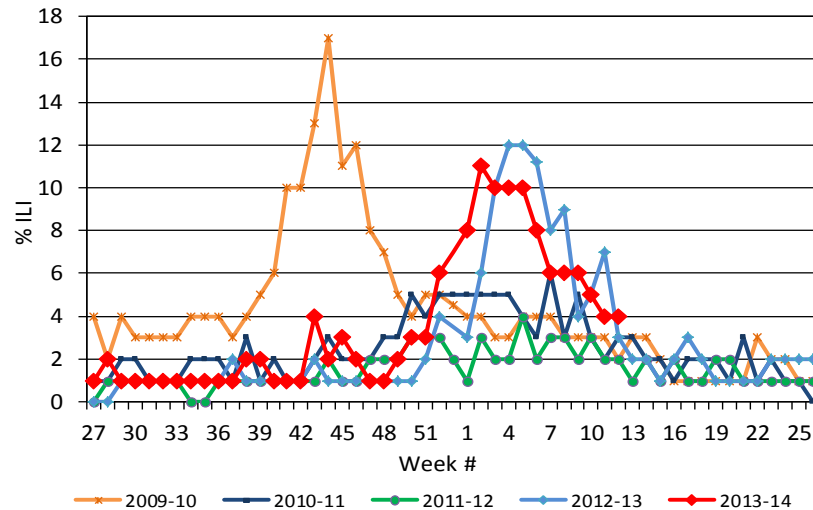
<sup>#</sup> FYTD=Fiscal year to date; FY is July 1-June 30 (Week 27-26). Total deaths reported in prior years: 65 in 2012-13, 14 in 2011-12, and 24 in 2010-11.

\* Previous weeks percentages may change due to delayed reporting.

\*\* Includes FYs 2010-11, 2011-12, and 2012-13.

<sup>^</sup> Current FY deaths are shown by week of report; by week of death for prior FYs.

**Figure 1. Percent of Emergency Department Visits for Influenza-like-Illness by Week and FY**



## Influenza Reporting

Local providers are encouraged to report any laboratory positive influenza detections to the County's Epidemiology Program by **FAX to (858) 715-6458**. Please fax a [Case Report Form](#) and/or a printed laboratory result. If known, please indicate if patient was admitted to ICU or died. For questions regarding sending specimens to Public Health Laboratory (PHL), call (619) 692-8500. Click here for the updated PHL [PCR Test Request Form](#). Contact Epidemiology with any questions at **(619) 692-8499** or [EpiDiv.HHSA@sdcounty.ca.gov](mailto:EpiDiv.HHSA@sdcounty.ca.gov).

## Immunization Resources

County of San Diego Immunization Branch  
[www.sdiz.org](http://www.sdiz.org)

Influenza surveillance is a collaborative effort between the County of San Diego Epidemiology and Immunization Services Branch and the medical community. Thank you!



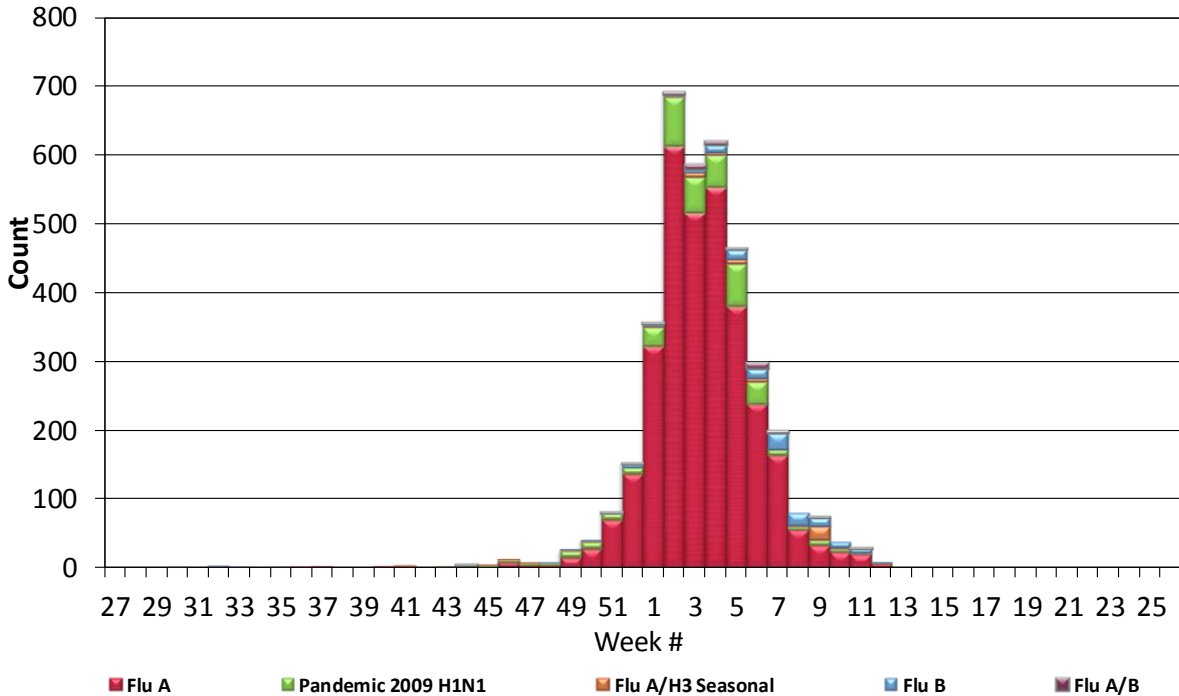
# Influenza Watch

March 26, 2014

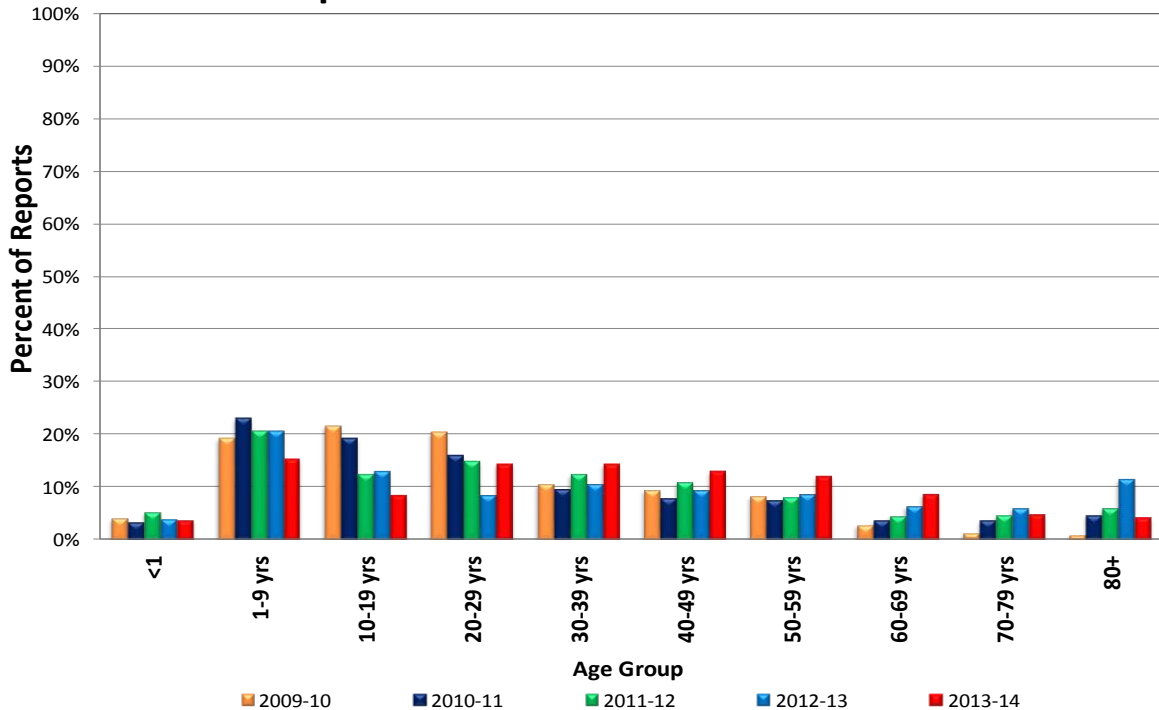
Week #12, ending 3/22/14



**Figure 2. San Diego County Influenza Detections by Type and Week of Report, 2013-14 FYTD (N=3,800)**



**Figure 3. Percent of Reported Influenza Cases by Age Group and Fiscal Year Total vs. 2013-14 FYTD**





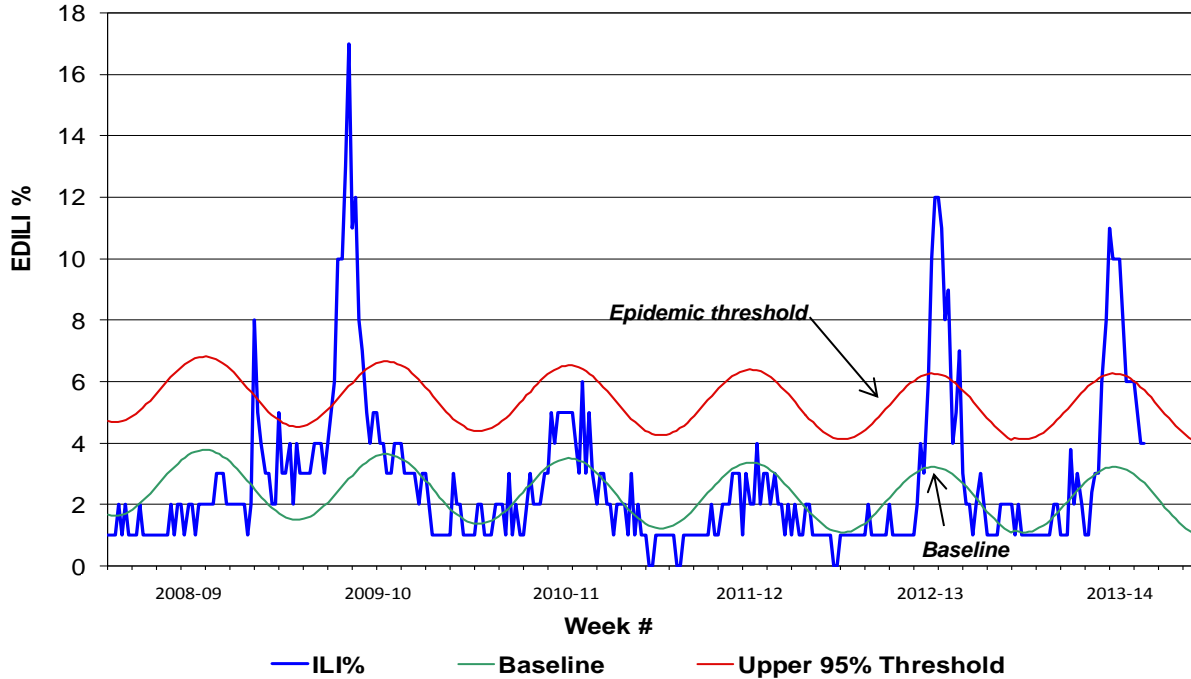
# Influenza Watch



March 26, 2014

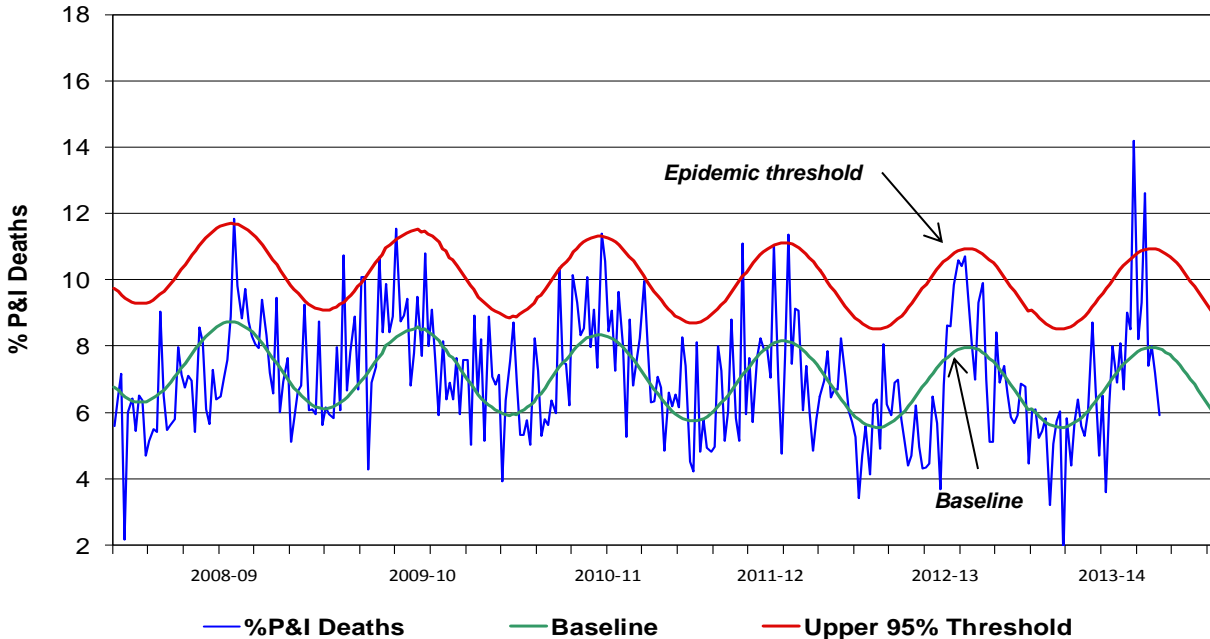
Week #12, ending 3/22/14

**Figure 4. Percent of San Diego County Emergency Department Visits for Influenza-like-Illness by Week and FY Compared to 5-Year Baseline & Upper 95% Threshold Values (Serfling Method)**



Note: Influenza-like-illness is defined as fever  $\geq 100^{\circ}\text{F}$ , and cough and/or sore throat.

**Figure 5. Percent of All San Diego County Deaths Registered with Pneumonia and/or Influenza by Week and FY Compared to Prior 5-Year Baseline & Upper 95% Threshold (Serfling Method)**



Note: Includes any death certificates registered with pneumonia and/or influenza listed anywhere on the death certificate.