



Influenza Watch

March 5, 2014

Week #9, ending 3/1/14



The purpose of the weekly *Influenza Watch* is to summarize current influenza surveillance in San Diego County. **Please note that reported weekly data are preliminary and may change due to delayed submissions and additional laboratory results.**

Current Week 9 (ending 3/1/2014)

- 71 influenza detections reported for Week 9: *Expected level*
- 3,721 total influenza detections reported to date
- 6% influenza-like-illness (ILI) among emergency department visits: *Expected level*
- 2 influenza-related deaths reported this week
- 8% of deaths registered with Pneumonia & Influenza: *Expected level*

Current Status

- Influenza activity is decreasing.
- CA Department of Public Health [Influenza Surveillance](#)
- CDC Influenza Surveillance [Weekly Report](#)

Table 1. Influenza Detections Reported, FY 2013-14*

Positive Test Type/Subtype	Week 9	Total To-Date
Influenza A†	34	3,149
Influenza A (H1) Seasonal	0	0
Influenza A (H3) Seasonal	17	54
Pandemic 2009 H1N1	6	368
Influenza B	13	116
Influenza A/B†	1	34
Total	71	3,721

* FY is July 1 - June 30, or Week 27 - 26.

† No further characterization performed or results not available at time of publication.

Note: Totals may change due to further laboratory findings.

5,438 total influenza detections were reported in 2012-13

Table 2. Influenza Surveillance Indicators

Indicator	FY 2013-14			FY 2012-13		Prior 3-Year Average**	
	Week 9	Week 8	FYTD#	Week 9	FYTD#	Week 9	FYTD#
Influenza detections reported (all types, rapid and/or lab confirmed)	71	80	3,721	272	4,787	190	2,888
Percent of emergency department visits for ILI*	6%	6%		4%		4%	
Percent of deaths registered with pneumonia and/or influenza	8%	7%		9%		9%	
Number of influenza-related deaths reported^	2	3	48	4	51	2.3	25.3

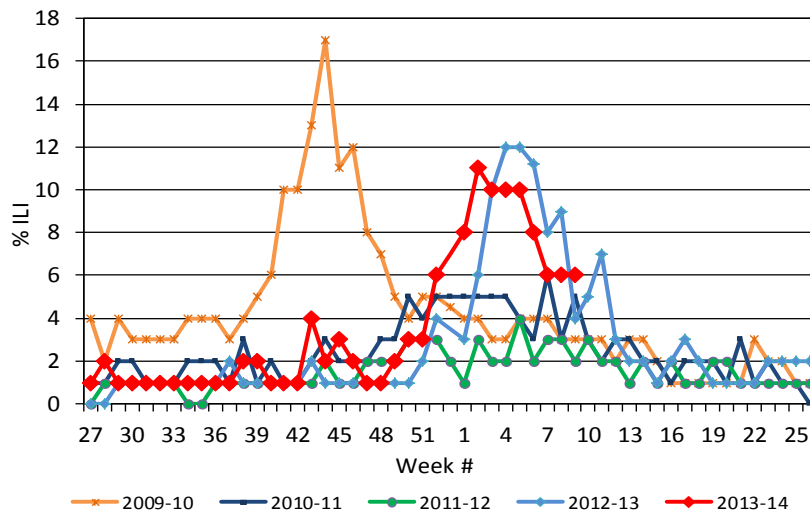
FYTD=Fiscal year to date; FY is July 1-June 30 (Week 27-26). Total deaths reported in prior years: 65 in 2012-13, 14 in 2011-12, and 24 in 2010-11.

* Previous weeks percentages may change due to delayed reporting.

** Includes FYs 2010-11, 2011-12, and 2012-13.

^ Current FY deaths are shown by week of report; by week of death for prior FYs.

Figure 1. Percent of Emergency Department Visits for Influenza-like-Illness by Week and FY



Influenza Reporting

Local providers are encouraged to report any laboratory positive influenza detections to the County's Epidemiology Program by **FAX to (858) 715-6458**. Please fax a [Case Report Form](#) and/or a printed laboratory result. If known, please indicate if patient was admitted to ICU or died. For questions regarding sending specimens to Public Health Laboratory (PHL), call (619) 692-8500. Click here for the updated PHL [PCR Test Request Form](#). Contact Epidemiology with any questions at **(619) 692-8499** or EpiDiv.HHSA@sdcounty.ca.gov.

Immunization Resources

County of San Diego Immunization Branch
www.sdiz.org

Influenza surveillance is a collaborative effort between the County of San Diego Epidemiology and Immunization Services Branch and the medical community. Thank you!



Influenza Watch

March 5, 2014

Week #9, ending 3/1/14



Figure 2. San Diego County Influenza Detections by Type and Week of Report, 2013-14 FYTD (N=3,721)

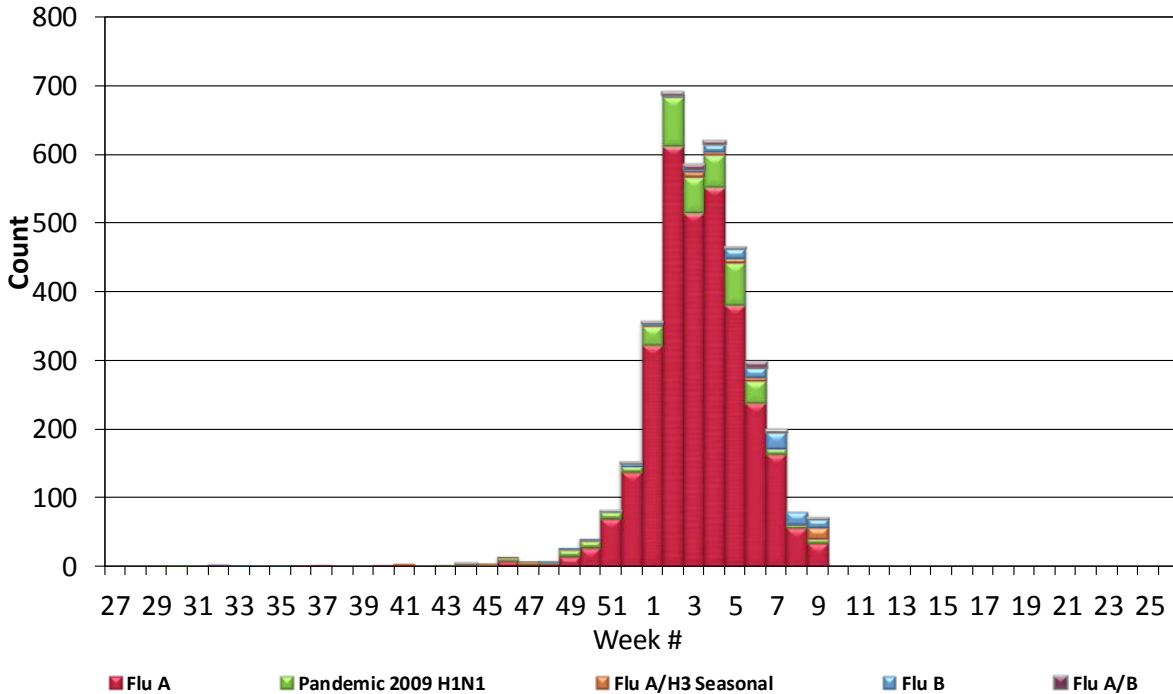
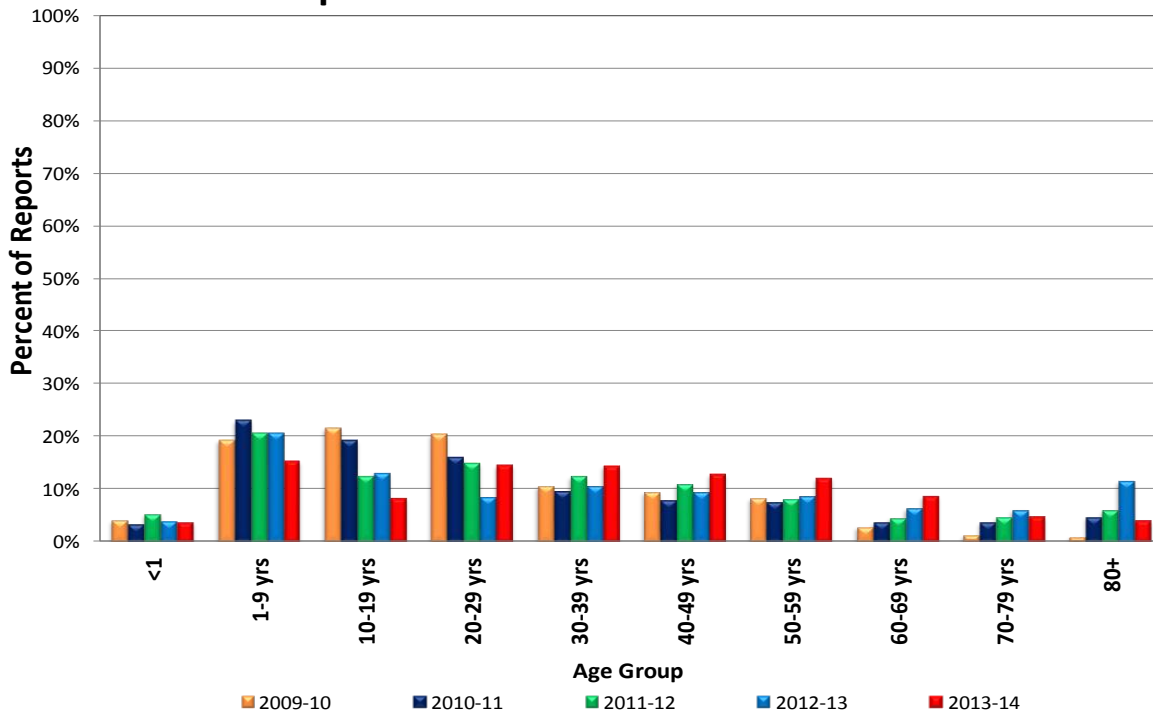


Figure 3. Percent of Reported Influenza Cases by Age Group and Fiscal Year Total vs. 2013-14 FYTD





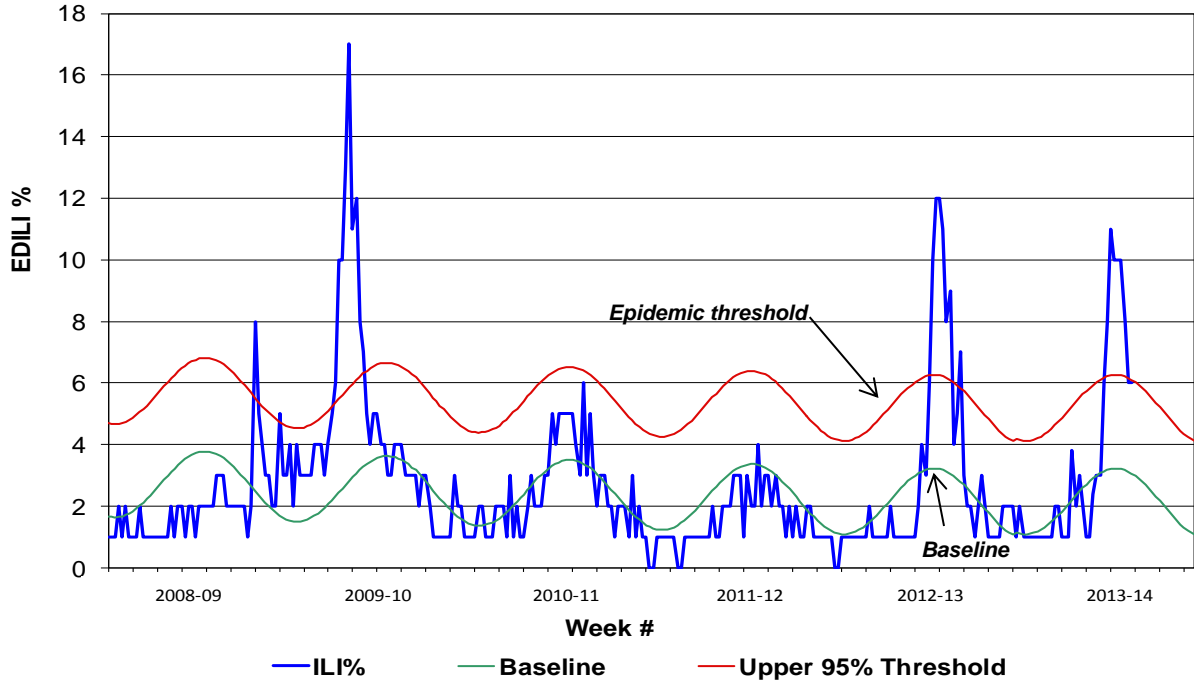
Influenza Watch



March 5, 2014

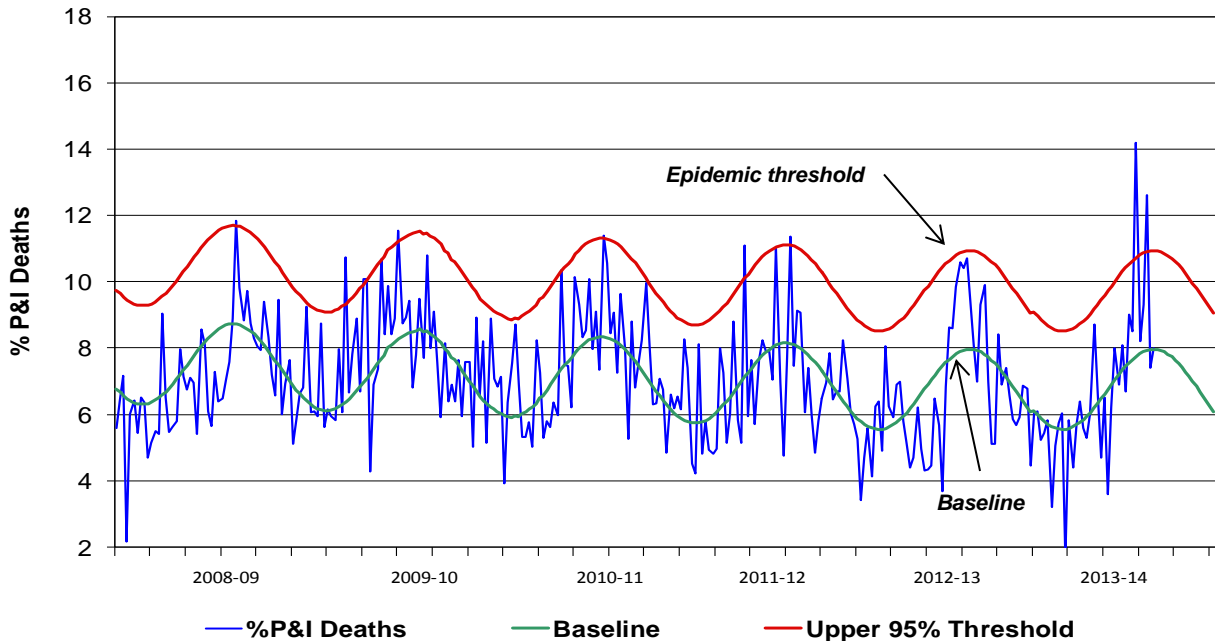
Week #9, ending 3/1/14

Figure 4. Percent of San Diego County Emergency Department Visits for Influenza-like-Illness by Week and FY Compared to 5-Year Baseline & Upper 95% Threshold Values (Serfling Method)



Note: Influenza-like-illness is defined as fever $\geq 100^{\circ}\text{F}$, and cough and/or sore throat.

Figure 5. Percent of All San Diego County Deaths Registered with Pneumonia and/or Influenza by Week and FY Compared to Prior 5-Year Baseline & Upper 95% Threshold (Serfling Method)



Note: Includes any death certificates registered with pneumonia and/or influenza listed anywhere on the death certificate.