



Influenza Watch

February 19, 2014

Week #7, ending 2/15/14



The purpose of the weekly *Influenza Watch* is to summarize current influenza surveillance in San Diego County. **Please note that reported weekly data are preliminary and may change due to delayed submissions and additional laboratory results.**

Current Week 7 (ending 2/15/2014)

- 196 influenza detections reported for Week 7: *Elevated level*
- 3,561 total influenza detections reported to date
- 6% influenza-like-illness (ILI) among emergency department visits: *Expected level*
- 8 influenza-related deaths reported this week
- 13% of deaths registered with Pneumonia & Influenza: *Elevated level*

Current Status

- Influenza activity is decreasing.
- CA Department of Public Health [Influenza Surveillance](#)
- CDC Influenza Surveillance [Weekly Report](#)

Table 1. Influenza Detections Reported, FY 2013-14*

Positive Test Type/Subtype	Week 7	Total To-Date
Influenza A†	159	3,057
Influenza A (H1) Seasonal	0	0
Influenza A (H3) Seasonal	0	35
Pandemic 2009 H1N1	9	351
Influenza B	24	84
Influenza A/B†	4	34
Total	196	3,561

* FY is July 1- June 30, or Week 27 - 26.

† No further characterization performed or results not available at time of publication.

Note: Totals may change due to further laboratory findings.

5,438 total influenza detections were reported in 2012-13

Table 2. Influenza Surveillance Indicators

Indicator	FY 2013-14			FY 2012-13		Prior 3-Year Average**	
	Week 7	Week 6	FYTD#	Week 7	FYTD#	Week 7	FYTD#
Influenza detections reported (all types, rapid and/or lab confirmed)	196	297	3,561	446	4,229	364	2,454
Percent of emergency department visits for ILI*	6%	8%		8%		6%	
Percent of deaths registered with pneumonia and/or influenza	13%	9%		10%		9%	
Number of influenza-related deaths reported^	8	6	43	3	43	4.0	20.3

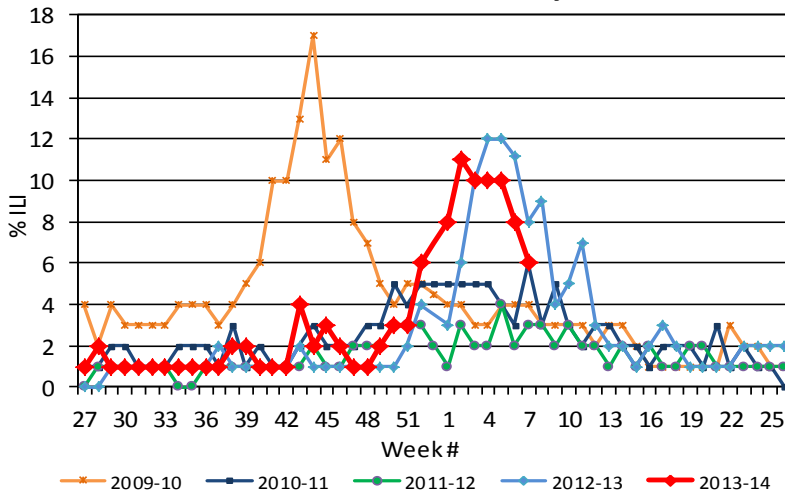
FYTD=Fiscal year to date; FY is July 1-June 30 (Week 27-26). Total deaths reported in prior years: 65 in 2012-13, 14 in 2011-12, and 24 in 2010-11.

* Previous weeks percentages may change due to delayed reporting.

** Includes FYs 2010-11, 2011-12, and 2012-13.

^ Current FY deaths are shown by week of report; by week of death for prior FYs.

Figure 1. Percent of Emergency Department Visits for Influenza-like-Illness by Week and FY



Influenza Reporting

Local providers are encouraged to report any laboratory positive influenza detections to the County's Epidemiology Program by **FAX to (858) 715-6458**. Please fax a [Case Report Form](#) and/or a printed laboratory result. If known, please indicate if patient was admitted to ICU or died. For questions regarding sending specimens to Public Health Laboratory (PHL), call (619) 692-8500. Click here for the updated PHL [PCR Test Request Form](#). Contact Epidemiology with any questions at **(619) 692-8499** or EpiDiv.HHSA@sdcounty.ca.gov.

Immunization Resources

County of San Diego Immunization Branch
www.sdiz.org

Influenza surveillance is a collaborative effort between the County of San Diego Epidemiology and Immunization Services Branch and the medical community. Thank you!



Influenza Watch

February 19, 2014

Week #7, ending 2/15/14



Figure 2. San Diego County Influenza Detections by Type and Week of Report, 2013-14 FYTD (N=3,561)

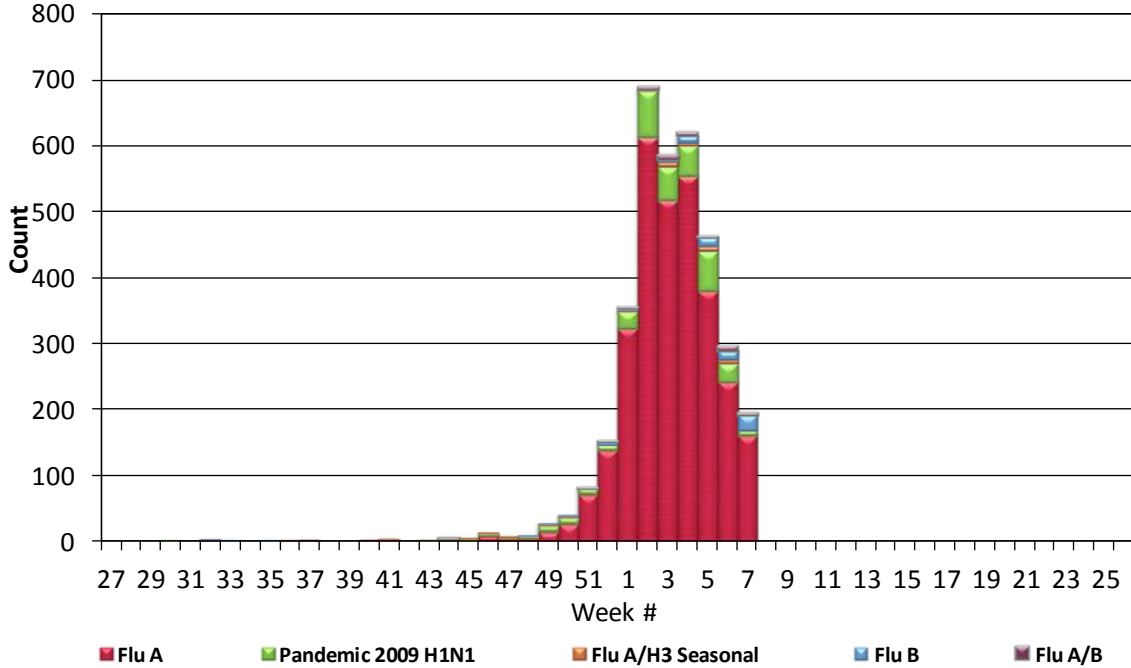
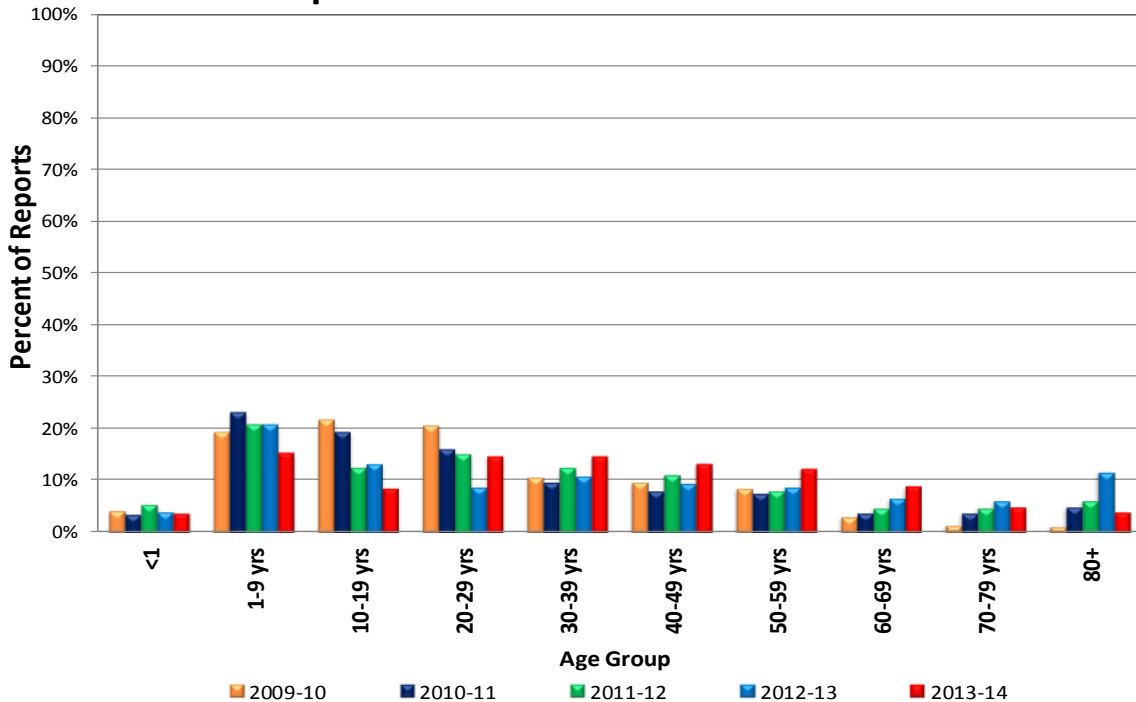


Figure 3. Percent of Reported Influenza Cases by Age Group and Fiscal Year Total vs. 2013-14 FYTD





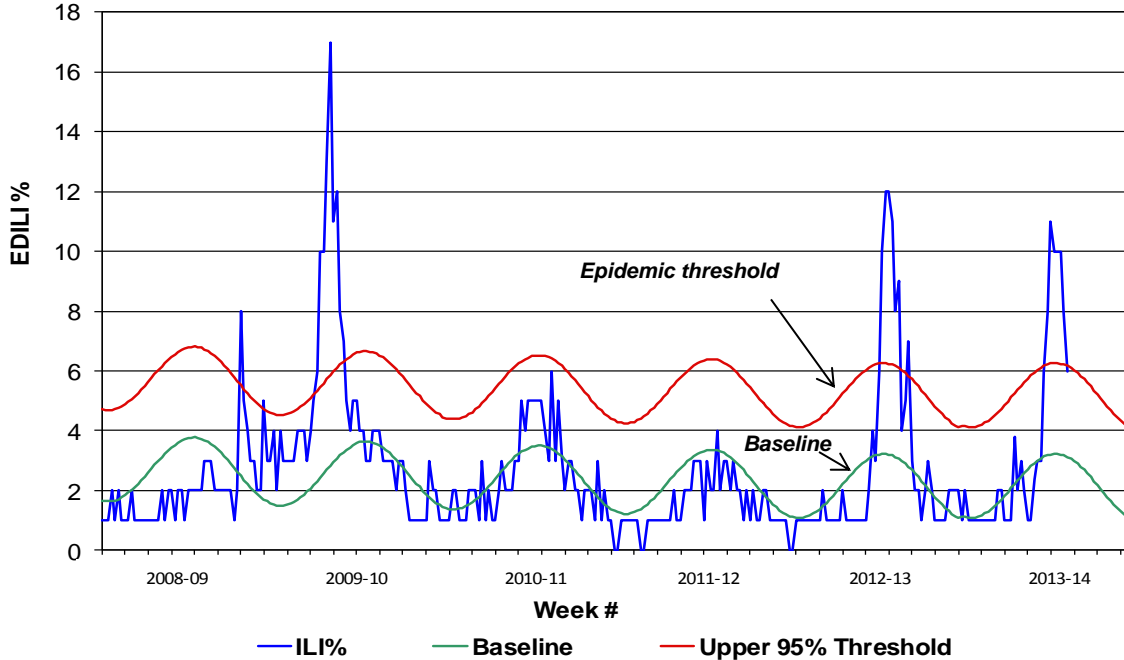
Influenza Watch

February 19, 2014

Week #7, ending 2/15/14

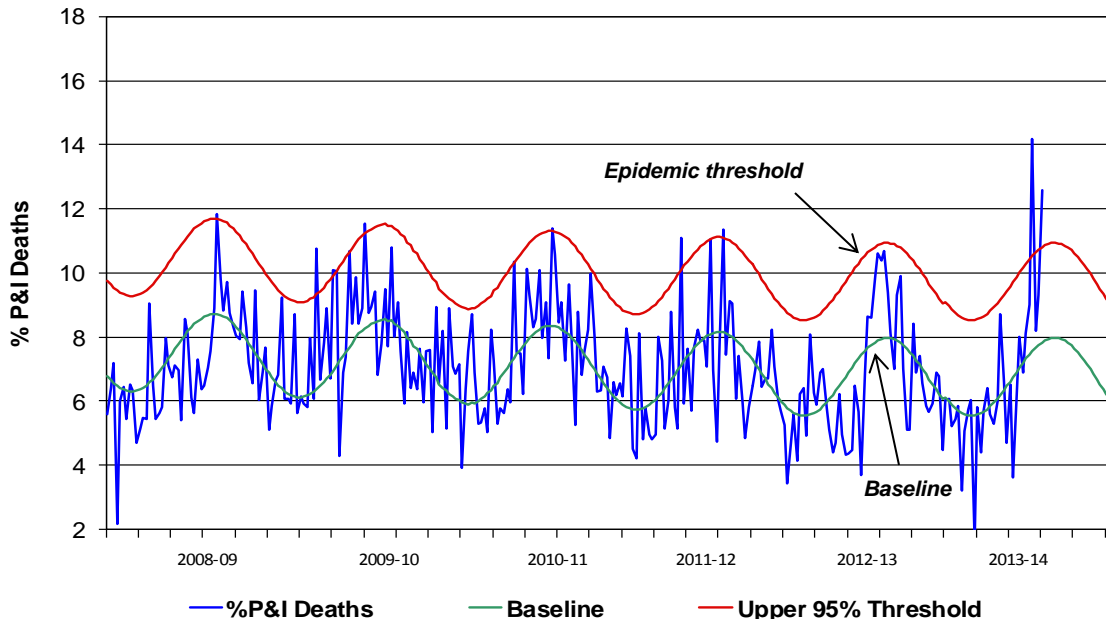


Figure 4. Percent of San Diego County Emergency Department Visits for Influenza-like-Illness by Week and FY Compared to 5-Year Baseline & Upper 95% Threshold Values (Serfling Method)



Note: Influenza-like-illness is defined as fever $\geq 100^{\circ}\text{F}$, and cough and/or sore throat.

Figure 5. Percent of All San Diego County Deaths Registered with Pneumonia and/or Influenza by Week and FY Compared to Prior 5-Year Baseline & Upper 95% Threshold (Serfling Method)



Note: Includes any death certificates registered with pneumonia and/or influenza listed anywhere on the death certificate.



Influenza Watch

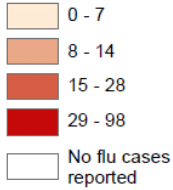
February 19, 2014

Week #7, ending 2/15/14



Influenza A Rates Among San Diego County Residents by Patient Zip Code 7/1/2013 - 2/15/2014

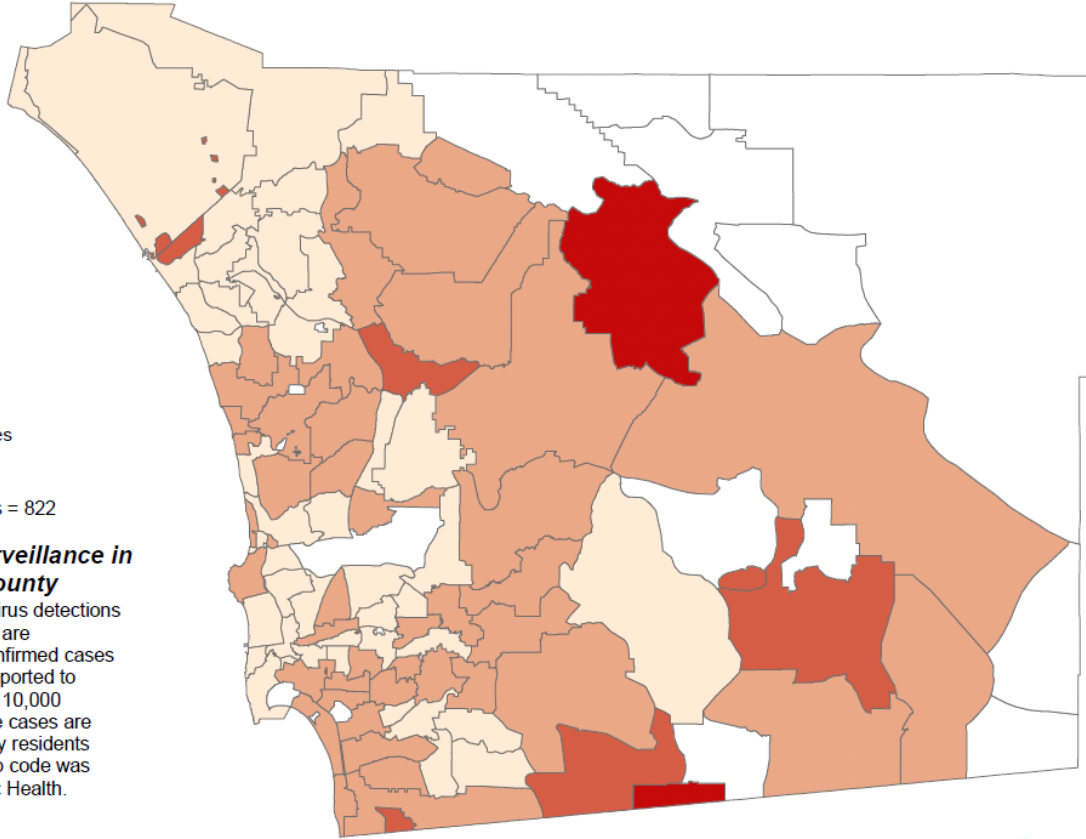
Influenza A Rates



n = 2,624
missing zip codes = 822

Influenza Surveillance in San Diego County

The influenza A virus detections represented here are number of lab-confirmed cases that have been reported to Public Health per 10,000 population. These cases are San Diego County residents and the case's zip code was reported to Public Health.



County of San Diego, HHSA
Epidemiology & Immunization Services Branch
Contact: Lacey Hicks or Jeff Johnson, 619-692-8499
Date: 2/18/2014



Table 3. San Diego County Influenza Cases by HHSA Region,* 2013-14 FYTD

HHSA Region	All Cases	
	Cases	Percent
CENTRAL	427	12.0%
EAST	477	13.4%
NORTH CENTRAL	447	12.6%
NORTH COASTAL	384	10.8%
NORTH INLAND	533	15.0%
SOUTH	437	12.3%
MISSING/UNKNOWN	856	24.0%
Total	3,561	100.0%

*HHSA regions defined by zip code.

Cases received between July 1, 2013 - February 15, 2014.