



Influenza Watch

February 12, 2014

Week #6, ending 2/8/14



The purpose of the weekly *Influenza Watch* is to summarize current influenza surveillance in San Diego County. **Please note that reported weekly data are preliminary and may change due to delayed submissions and additional laboratory results.**

Current Week 6 (ending 2/8/2014)

- 297 influenza detections reported for Week 6: *Elevated level*
- 3,372 total influenza detections reported to date
- 8% influenza-like-illness (ILI) among emergency department visits: *Elevated level*
- 6 influenza-related deaths reported this week
- 9% of deaths registered with Pneumonia & Influenza: *Expected level*

Current Status

- Influenza activity is decreasing.
- CA Department of Public Health [Influenza Surveillance](#)
- CDC Influenza Surveillance [Weekly Report](#)

Table 1. Influenza Detections Reported, FY 2013-14*

Positive Test Type/Subtype	Week 6	Total To-Date
Influenza A†	241	2,900
Influenza A (H1) Seasonal	0	0
Influenza A (H3) Seasonal	5	36
Pandemic 2009 H1N1	29	346
Influenza B	14	60
Influenza A/B†	8	30
Total	297	3,372

* FY is July 1- June 30, or Week 27 - 26.

† No further characterization performed or results not available at time of publication.
Note: Totals may change due to further laboratory findings.
5,438 total influenza detections were reported in 2012-13

Table 2. Influenza Surveillance Indicators

Indicator	FY 2013-14			FY 2012-13		Prior 3-Year Average**	
	Week 6	Week 5	FYTD#	Week 6	FYTD#	Week 6	FYTD#
Influenza detections reported (all types, rapid and/or lab confirmed)	297	464	3,372	828	3,783	411	2,090
Percent of emergency department visits for ILI*	8%	10%		11%		5%	
Percent of deaths registered with pneumonia and/or influenza	9%	8%		11%		10%	
Number of influenza-related deaths reported^	6	9	35	8	40	4.0	16.3

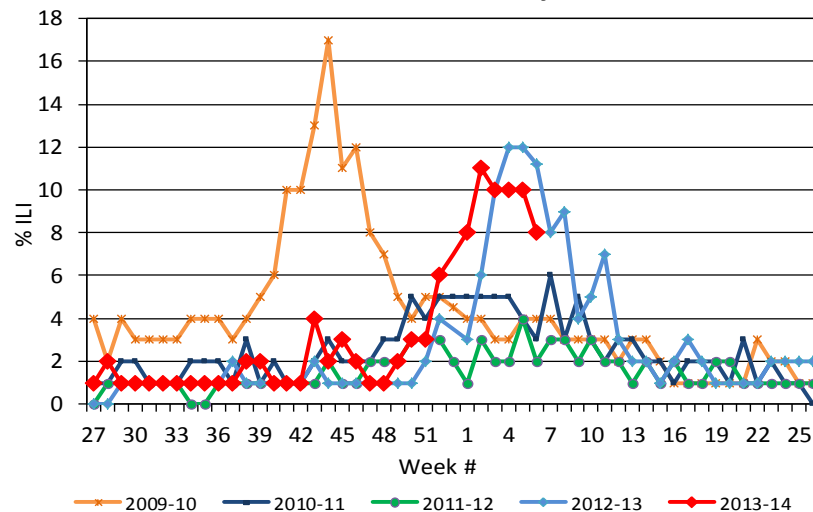
FYTD=Fiscal year to date; FY is July 1-June 30 (Week 27-26). Total deaths reported in prior years: 65 in 2012-13, 14 in 2011-12, and 24 in 2010-11.

* Previous weeks percentages may change due to delayed reporting.

** Includes FYs 2010-11, 2011-12, and 2012-13.

^ Current FY deaths are shown by week of report; by week of death for prior FYs.

Figure 1. Percent of Emergency Department Visits for Influenza-like-Illness by Week and FY



Influenza Reporting

Local providers are encouraged to report any laboratory positive influenza detections to the County's Epidemiology Program by **FAX to (858) 715-6458**. Please fax a [Case Report Form](#) and/or a printed laboratory result. If known, please indicate if patient was admitted to ICU or died. For questions regarding sending specimens to Public Health Laboratory (PHL), call (619) 692-8500. Click here for the updated PHL [PCR Test Request Form](#). Contact Epidemiology with any questions at **(619) 692-8499** or EpiDiv.HHSA@sdcounty.ca.gov.

Immunization Resources

County of San Diego Immunization Branch
www.sdiz.org

Influenza surveillance is a collaborative effort between the County of San Diego Epidemiology and Immunization Services Branch and the medical community. Thank you!



Influenza Watch

February 12, 2014

Week #6, ending 2/8/14



Figure 2. San Diego County Influenza Detections by Type and Week of Report, 2013-14 FYTD (N=3,372)

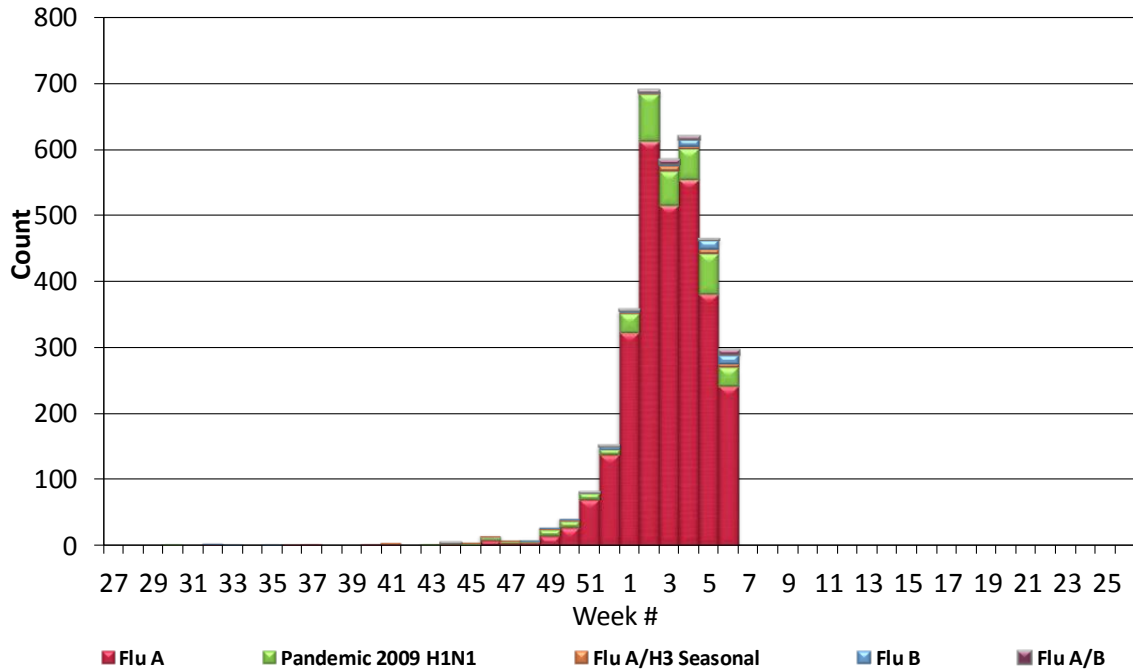
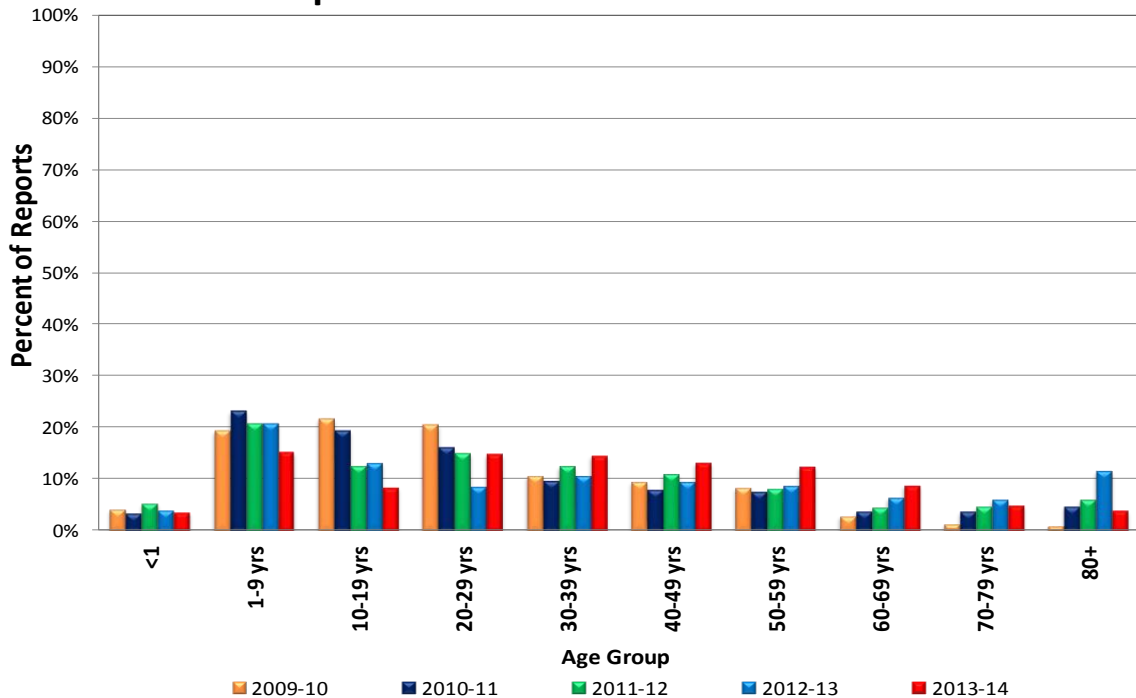


Figure 3. Percent of Reported Influenza Cases by Age Group and Fiscal Year Total vs. 2013-14 FYTD





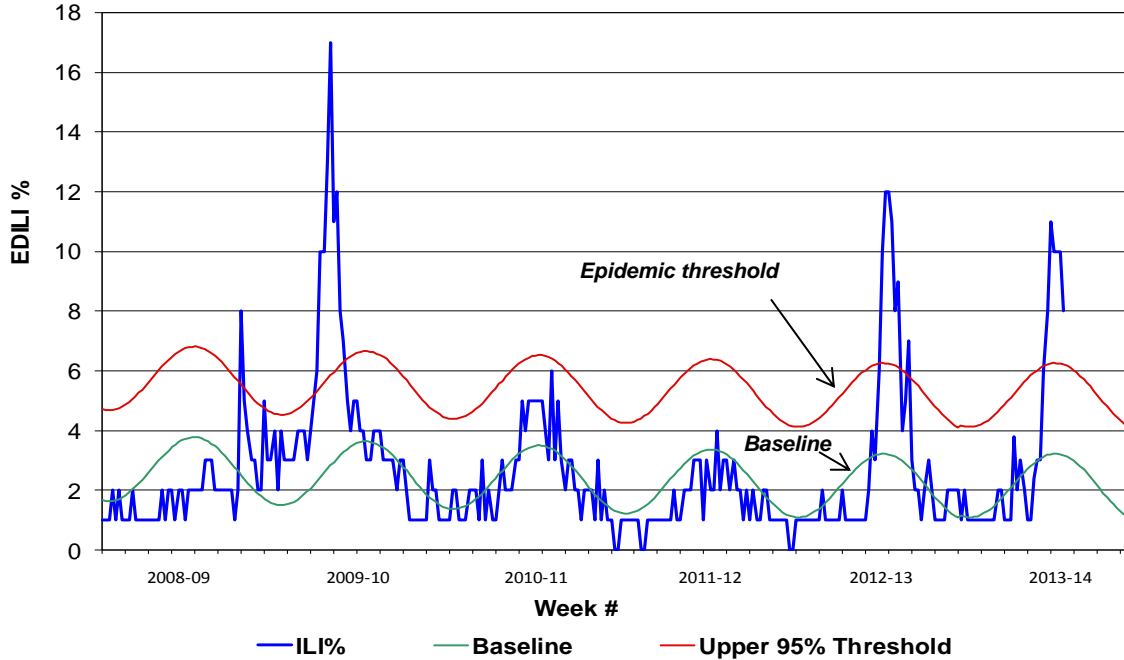
Influenza Watch

February 12, 2014

Week #6, ending 2/8/14

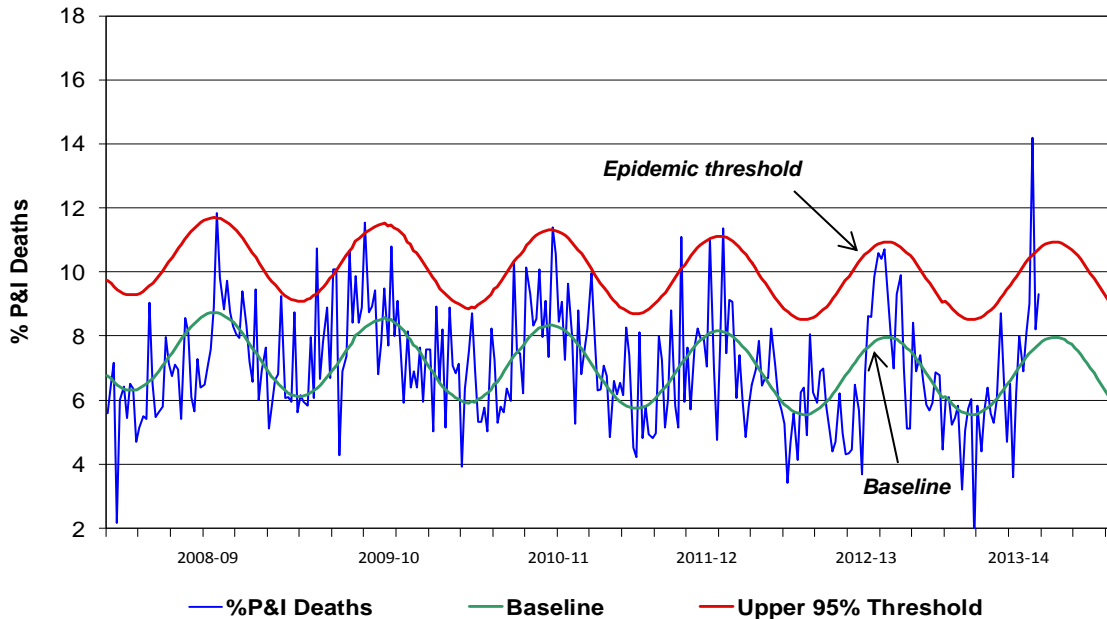


Figure 4. Percent of San Diego County Emergency Department Visits for Influenza-like-Illness by Week and FY Compared to 5-Year Baseline & Upper 95% Threshold Values (Serfling Method)



Note: Influenza-like-illness is defined as fever $\geq 100^{\circ}\text{F}$, and cough and/or sore throat.

Figure 5. Percent of All San Diego County Deaths Registered with Pneumonia and/or Influenza by Week and FY Compared to Prior 5-Year Baseline & Upper 95% Threshold (Serfling Method)



Note: Includes any death certificates registered with pneumonia and/or influenza listed anywhere on the death certificate.



Influenza Watch

February 12, 2014

Week #6, ending 2/8/14

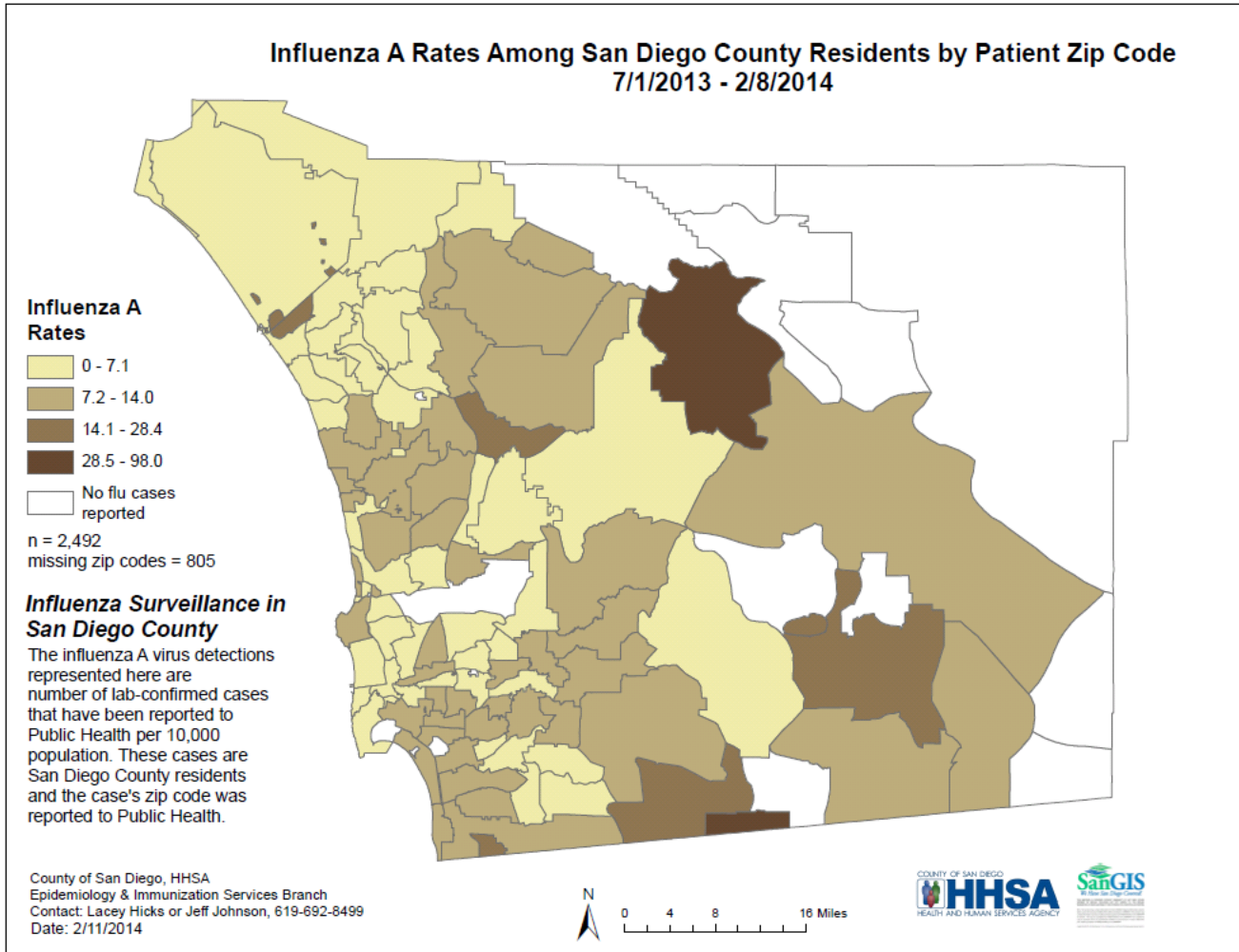


Table 3. San Diego County Influenza Cases by HHS Agency Region,* 2013-14 FYTD

HHS Agency Region	All Cases	
	Cases	Percent
CENTRAL	398	11.8%
EAST	457	13.6%
NORTH CENTRAL	417	12.4%
NORTH COASTAL	361	10.7%
NORTH INLAND	505	15.0%
SOUTH	419	12.4%
MISSING/UNKNOWN	815	24.2%
Total	3,372	100.0%

*HHS Agency regions defined by zip code.

Cases received between July 1, 2013 - February 8, 2014.