



Influenza Watch

January 29, 2014

Week #4, ending 1/25/14



The purpose of the weekly *Influenza Watch* is to summarize current influenza surveillance in San Diego County. **Please note that reported weekly data are preliminary and may change due to delayed submissions and additional laboratory results.**

Current Week 4 (ending 1/25/2014)

- 609 influenza detections reported for Week 4: *Elevated level*
- 2,620 total influenza detections reported to date
- 10% influenza-like-illness (ILI) among emergency department visits: *Elevated level*
- 8 influenza-related deaths reported this week
- 14% of deaths registered with Pneumonia & Influenza: *Elevated level*

Current Status

- Influenza activity is widespread.
- CA Department of Public Health [Influenza Surveillance](#)
- CDC Influenza Surveillance [Weekly Report](#)

Table 1. Influenza Detections Reported, FY 2013-14*

Positive Test Type/Subtype	Week 4	Total To-Date
Influenza A†	554	2,312
Influenza A (H1) Seasonal	0	0
Influenza A (H3) Seasonal	2	19
Pandemic 2009 H1N1	33	232
Influenza B	11	32
Influenza A/B†	9	25
Total	609	2,620

* FY is July 1- June 30, or Week 27 - 26.

† No further characterization performed or results not available at time of publication.

Note: Totals may change due to further laboratory findings. 5,438 total influenza detections were reported in 2012-13

Table 2. Influenza Surveillance Indicators

Indicator	FY 2013-14			FY 2012-13		Prior 3-Year Average**	
	Week 4	Week 3	FYTD#	Week 4	FYTD#	Week 4	FYTD#
Influenza detections reported (all types, rapid and/or lab confirmed)	609	590	2,620	924	2,100	431	1,250
Percent of emergency department visits for ILI*	10%	10%		12%		6%	
Percent of deaths registered with pneumonia and/or influenza	14%	9%		9%		8%	
Number of influenza-related deaths reported^	8	5	20	8	23	2.7	8.3

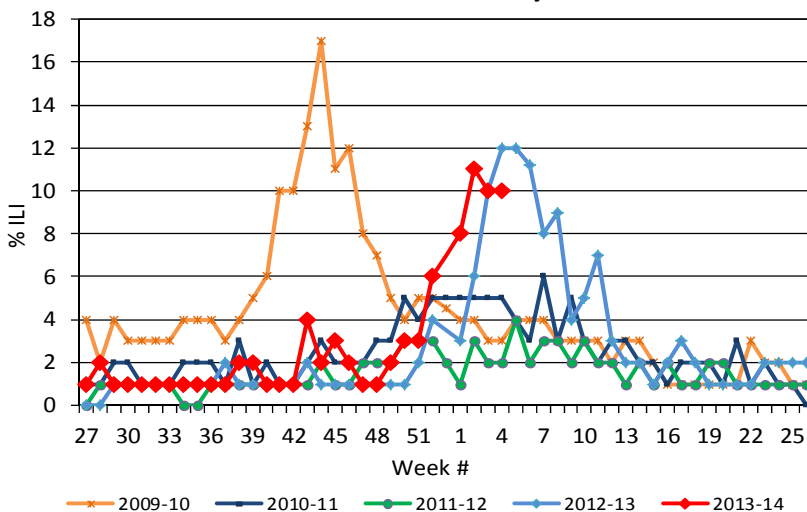
FYTD=Fiscal year to date; FY is July 1-June 30 (Week 27-26). Total deaths reported in prior years: 65 in 2012-13, 14 in 2011-12, and 24 in 2010-11.

* Previous weeks percentages may change due to delayed reporting.

** Includes FYs 2010-11, 2011-12, and 2012-13.

^ Current FY deaths are shown by week of report; by week of death for prior FYs.

Figure 1. Percent of Emergency Department Visits for Influenza-like-Illness by Week and FY



Influenza Reporting

Local providers are encouraged to report any laboratory positive influenza detections to the County's Epidemiology Program by **FAX to (858) 715-6458**. Please fax a [Case Report](#) Form and/or a printed laboratory result. If known, please indicate if patient was admitted to ICU or died. For questions regarding sending specimens to Public Health Laboratory (PHL), call (619) 692-8500. Click here for the updated PHL [PCR Test Request Form](#). Contact Epidemiology with any questions at **(619) 692-8499** or EpiDiv.HHSA@sdcounty.ca.gov.

Immunization Resources

County of San Diego Immunization Branch
www.sdiz.org

Influenza surveillance is a collaborative effort between the County of San Diego Epidemiology and Immunization Services Branch and the medical community. Thank you!



Influenza Watch

January 29, 2014

Week #4, ending 1/25/14



Figure 2. San Diego County Influenza Detections by Type and Week of Report, 2013-14 FYTD (N=2,620)

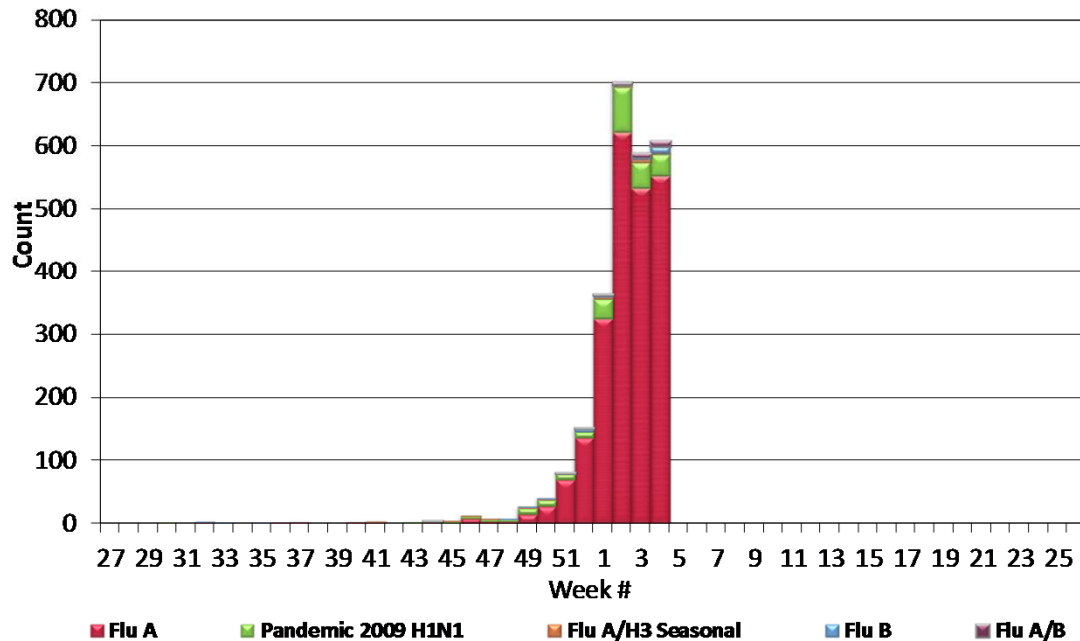
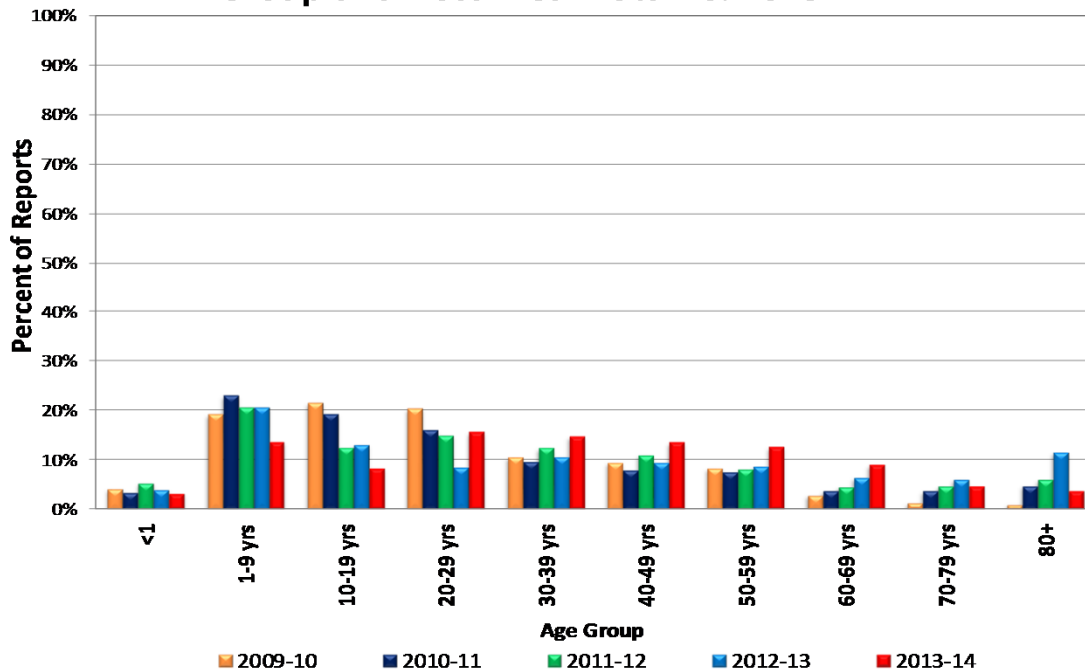


Figure 3. Percent of Reported Influenza Cases by Age Group and Fiscal Year Total vs. 2013-14 FYTD





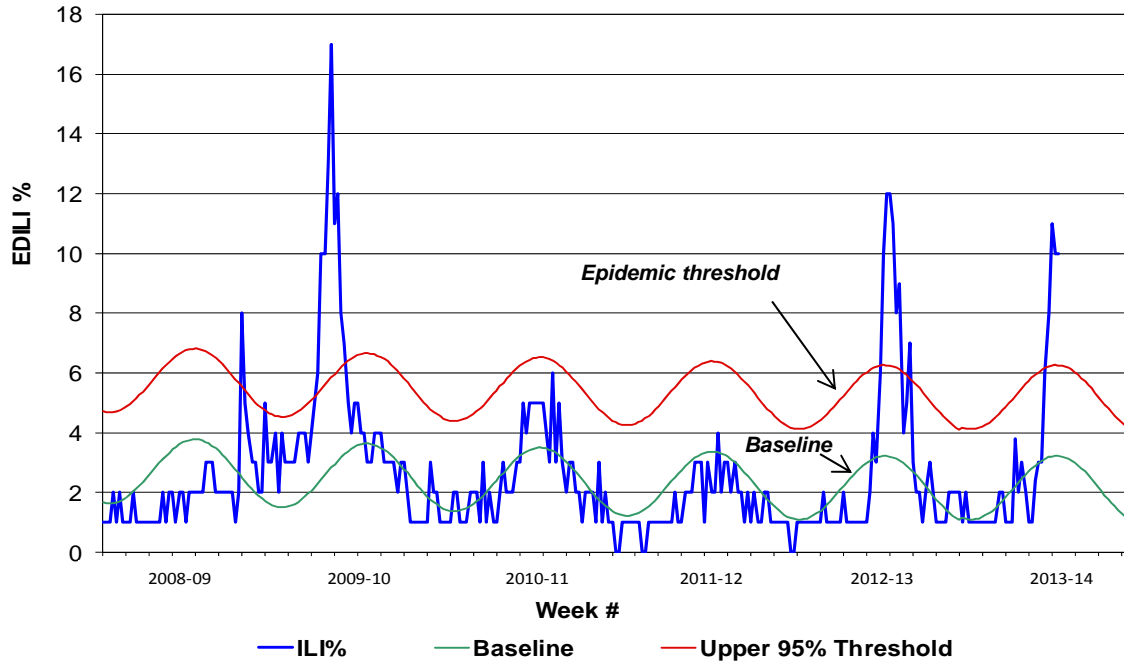
Influenza Watch



January 29, 2014

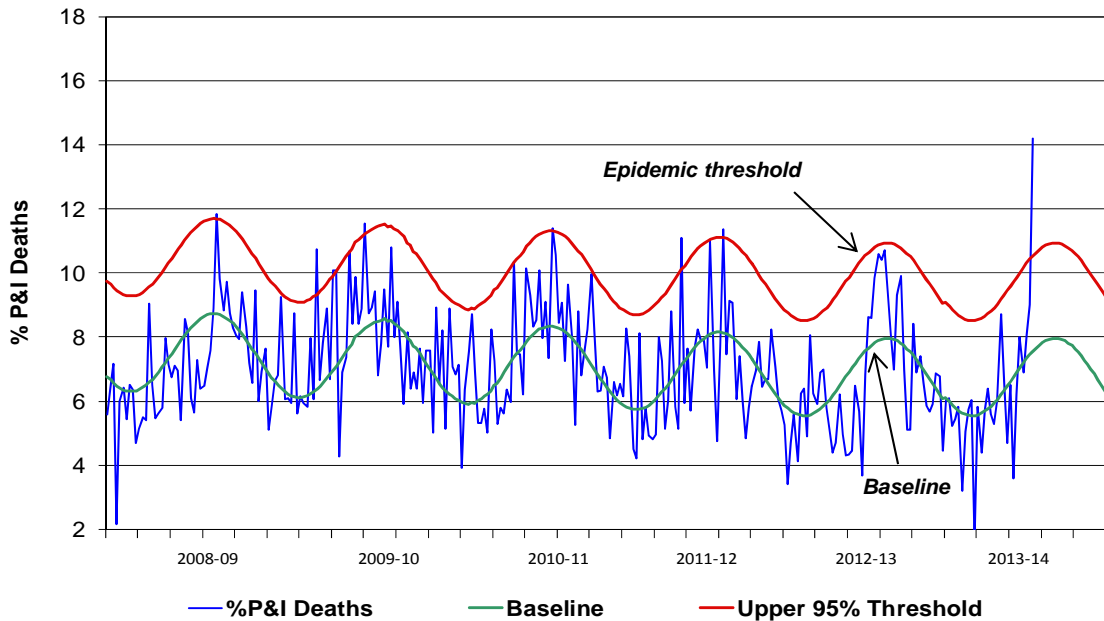
Week #4, ending 1/25/14

Figure 4. Percent of San Diego County Emergency Department Visits for Influenza-like-Illness by Week and FY Compared to 5-Year Baseline & Upper 95% Threshold Values (Serfling Method)



Note: Influenza-like-illness is defined as fever $\geq 100^{\circ}\text{F}$, and cough and/or sore throat.

Figure 5. Percent of All San Diego County Deaths Registered with Pneumonia and/or Influenza by Week and FY Compared to Prior 5-Year Baseline & Upper 95% Threshold (Serfling Method)



Note: Includes any death certificates registered with pneumonia and/or influenza listed anywhere on the death certificate.



Influenza Watch

January 29, 2014

Week #4, ending 1/25/14

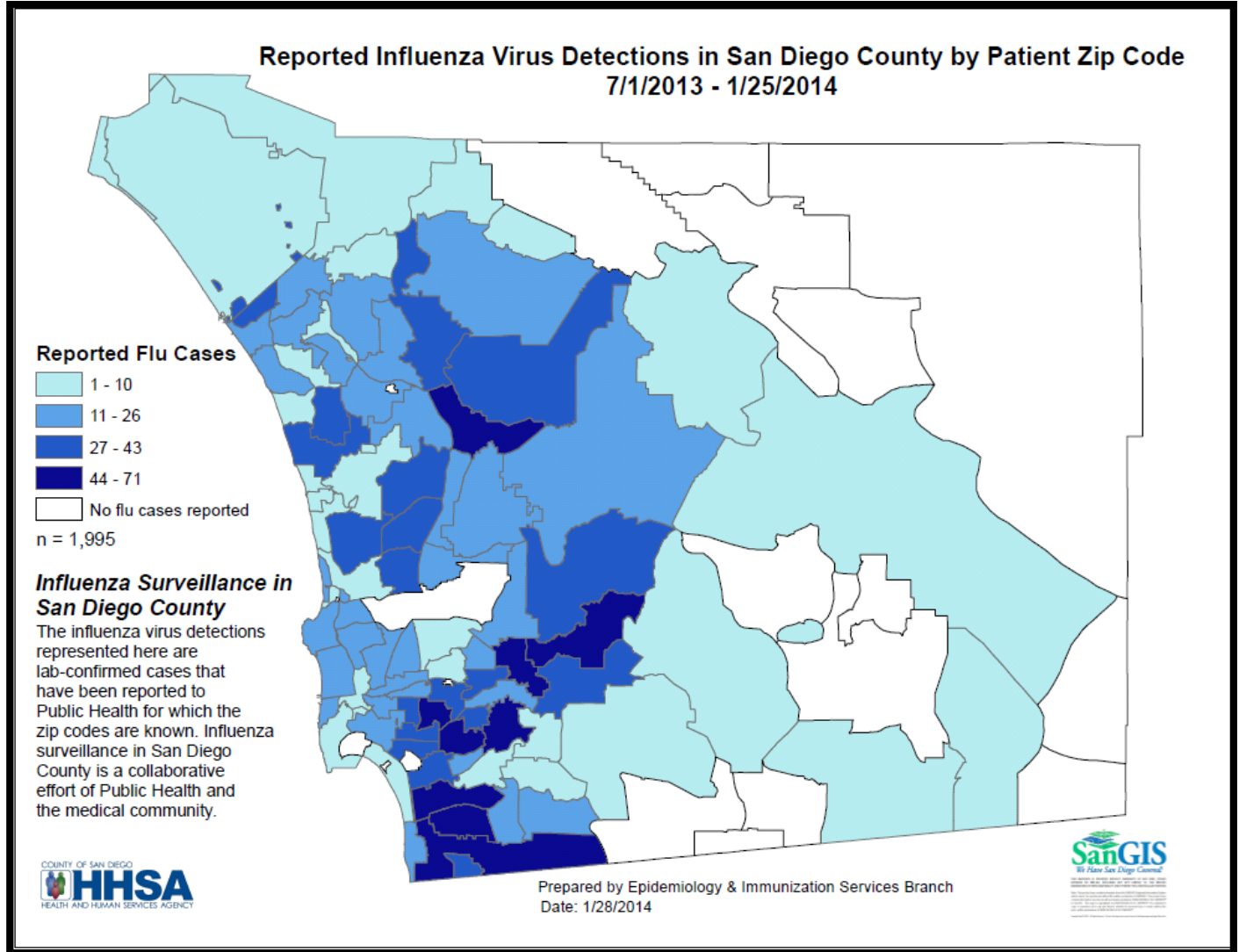


Table 3. San Diego County Influenza Cases by HHSA Region,* 2013-14 FYTD

HHSA Region	All Cases	
	Cases	Percent
CENTRAL	324	12.4%
EAST	371	14.2%
NORTH CENTRAL	312	11.9%
NORTH COASTAL	261	10.0%
NORTH INLAND	374	14.3%
SOUTH	312	11.9%
MISSING/UNKNOWN	666	25.4%
Total	2,620	100.0%

*HHSA regions defined by zip code.

Cases received between July 1, 2013 - January 25, 2014.