



# Influenza Watch

January 8, 2014

Week #1, ending 1/4/14



The purpose of the weekly *Influenza Watch* is to summarize current influenza surveillance in San Diego County. **Please note that reported weekly totals are preliminary and may change due to additional confirmatory or subtype laboratory results.**

## Current Week 1 (ending 1/4/2014)

- 361 influenza detections reported for week 1: *Elevated level*
- 716 total influenza detections reported to date
- 8% influenza-like-illness (ILI) among emergency department visits: *Elevated level*
- 1 influenza-related death reported to date: *Expected level*
- 7% percent of deaths registered with Pneumonia & Influenza: *Expected level*

## Current Status

- Influenza activity levels are increasing
- CA Department of Public Health [Influenza Surveillance](#)
- CDC Influenza Surveillance [Weekly Report](#)

**Table 1. Influenza Detections Reported, FY 2013-14\***

Positive Test Type/Subtype	Week 1	Total To-Date
Influenza A†	333	608
Influenza A (H1) Seasonal	0	0
Influenza A (H3) Seasonal	0	10
Pandemic 2009 H1N1	22	77
Influenza B	3	15
Influenza A/B†	3	6
<b>Total</b>	<b>361</b>	<b>716</b>

\* FY is July 1 - June 30, or Week 27 - 26.

† No further characterization performed or results not available at time of publication.

Note: Totals may change due to further laboratory findings.

**Table 2. Influenza Surveillance Indicators**

Indicator	FY 2013-14			FY 2012-13		Prior 3-Year Average**	
	Week 1	Week 52	FYTD#	Week 1	FYTD#	Week 1	FYTD#
Influenza detections reported (all types)*	361	154	716	143	359	97	383
Percent of emergency department visits for ILI	8%	6%		3%		3%	
Percent of deaths registered with pneumonia and/or influenza	7%	8%		4%		7%	
Number of influenza-related deaths reported^	1	0	1	2	4	0	1

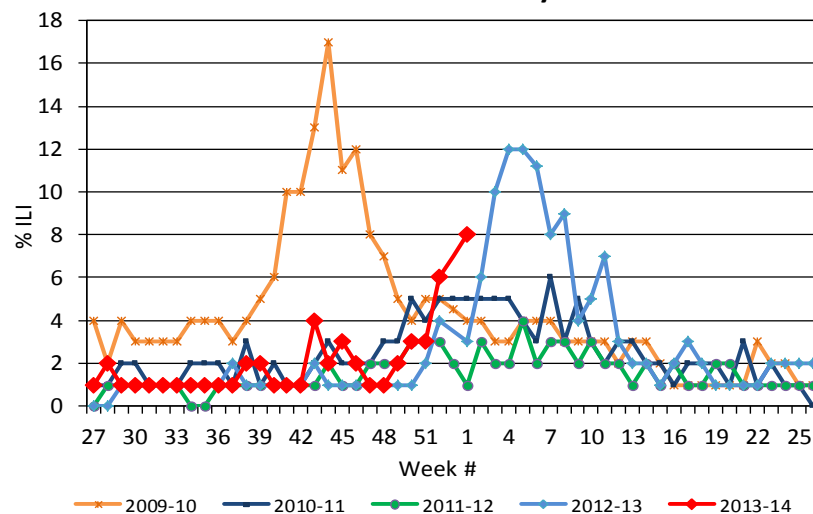
# FYTD=Fiscal year to date; FY is July 1-June 30 (Week 27-26). Total deaths reported in prior years: 65 in 2012-13, 14 in 2011-12, and 24 in 2010-11.

\* Includes rapid and laboratory confirmed results.

\*\* Includes FYs 2010-11, 2011-12, and 2012-13.

^ Current FY deaths are shown by week of report; by week of death for prior FYs.

**Figure 1. Percent of Emergency Department Visits for Influenza-like-Illness by Week and FY**



## Influenza Reporting

Local providers are encouraged to report any laboratory positive influenza detections to the County's Epidemiology Program by **FAX to (858) 715-6458**. Please fax a [Case Report Form](#) and/or a printed laboratory result. If known, please indicate if patient was admitted to ICU or died. For questions regarding sending specimens to Public Health Laboratory (PHL), call (619) 692-8500. Click here for the updated PHL [PCR Test Request Form](#). Contact Epidemiology with any questions at **(619) 692-8499** or [EpiDiv.HHSA@sdcounty.ca.gov](mailto:EpiDiv.HHSA@sdcounty.ca.gov).

## Immunization Resources

County of San Diego Immunization Branch  
[www.sdiz.org](http://www.sdiz.org)

Influenza surveillance is a collaborative effort between the County of San Diego Epidemiology and Immunization Services Branch and the medical community. Thank you!



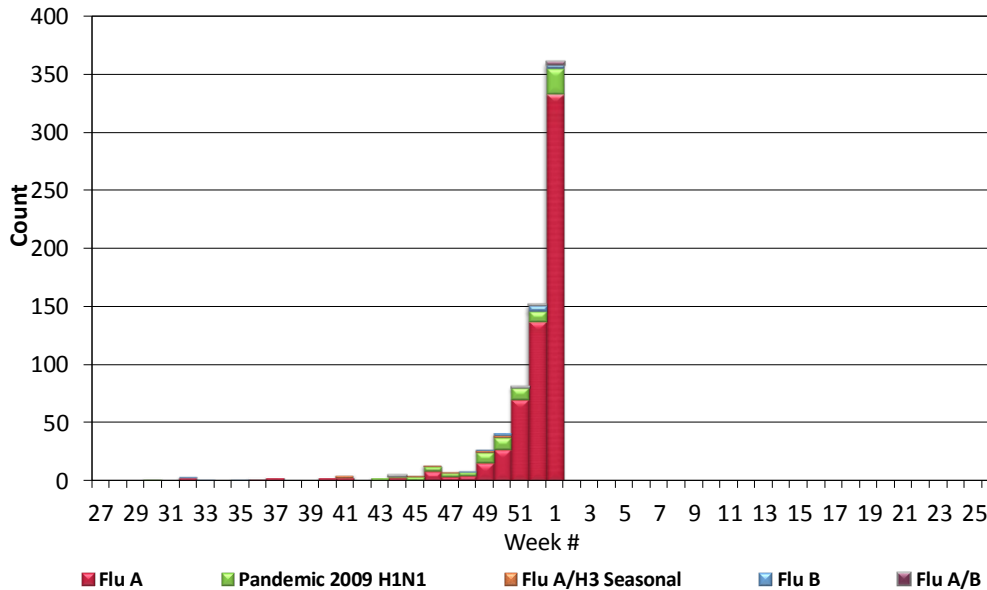
# Influenza Watch



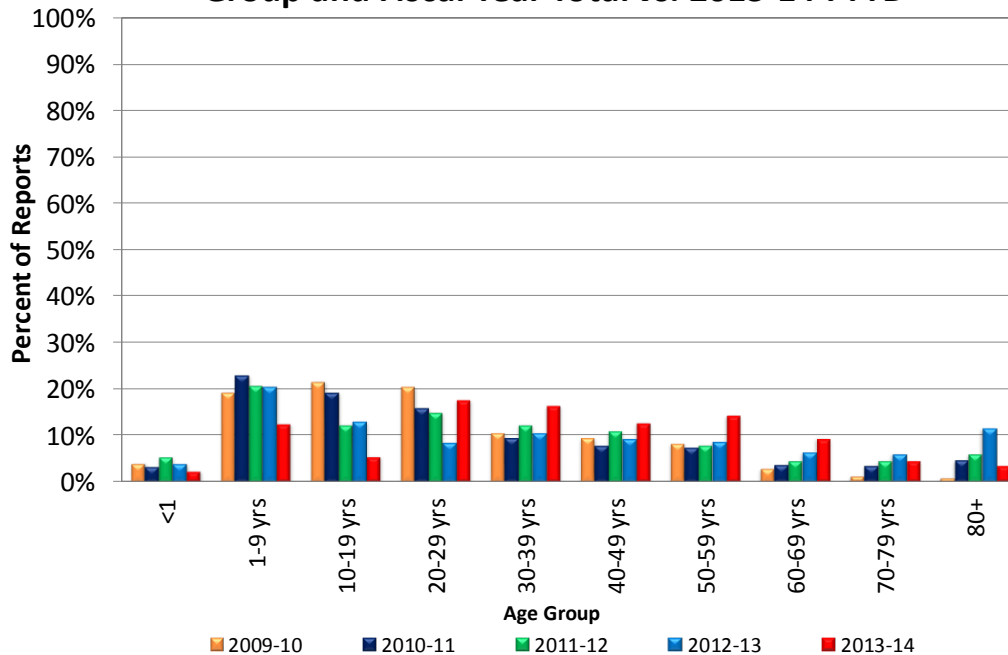
January 8, 2014

Week #1, ending 1/4/14

**Figure 2. San Diego County Influenza Detections by Type and Week of Report, 2013-14 YTD (N=716)**



**Figure 3. Percent of Reported Influenza Cases by Age Group and Fiscal Year Total vs. 2013-14 FYTD**



**CDPH Health Advisory Issued for Severe Influenza**

The California Department of Public Health (CDPH) issued an updated [CDPH advisory](#) on 1/3/14 regarding severe influenza cases among children and young and middle aged adults. The advisory contains detailed clinical management guidelines. Click on the above link for more information.



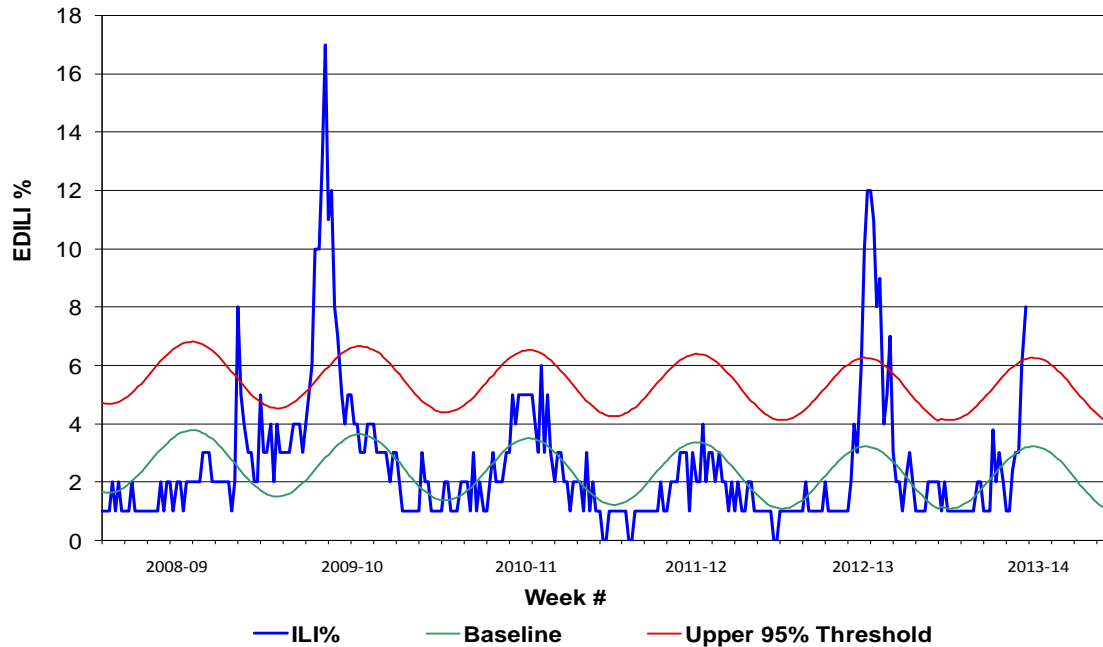
# Influenza Watch

January 8, 2014

Week #1, ending 1/4/14

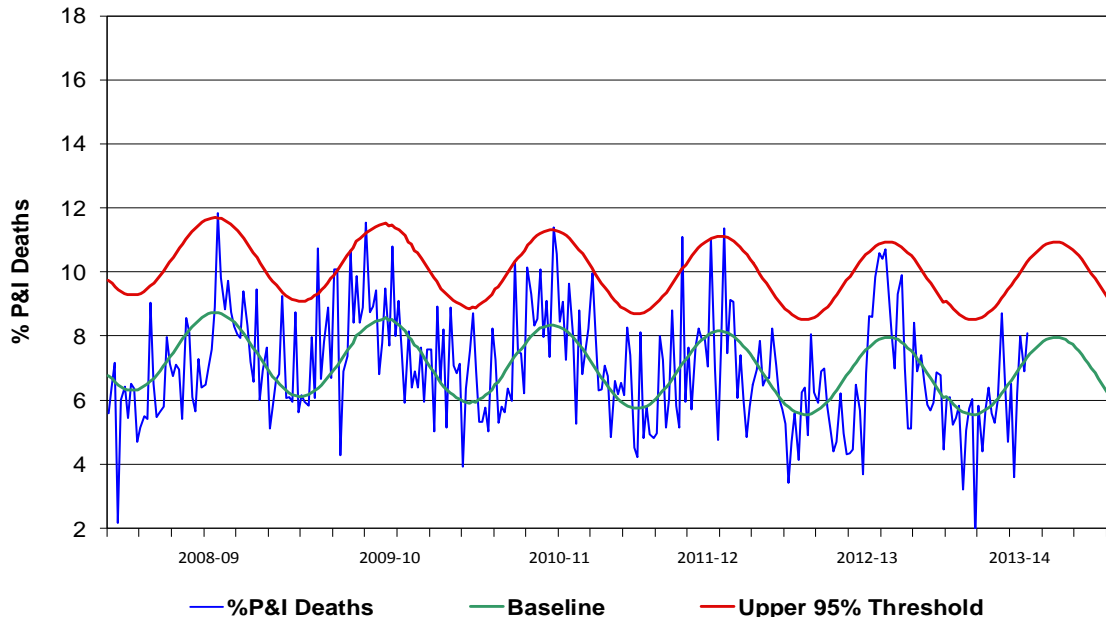


**Figure 4. Percent of San Diego County Emergency Department Visits for Influenza-like-Illness by Week and FY Compared to 5-Year Baseline & Upper 95% Threshold Values (Serfling Method)**



Note: Influenza-like-illness is defined as fever  $\geq 100^{\circ}\text{F}$ , and cough and/or sore throat.

**Figure 5. Percent of All San Diego County Deaths Registered with Pneumonia and/or Influenza by Week and FY Compared to Prior 5-Year Baseline & Upper 95% Threshold (Serfling Method)**



Note: Includes any death certificates registered with pneumonia and/or influenza listed anywhere on the death certificate.