

The purpose of the weekly *Influenza Watch* is to summarize current influenza surveillance in San Diego County. **Please note that reported weekly totals are preliminary and may change due to additional confirmatory or subtype laboratory results.**

Current Week 50 (ending 12/14/2013)

- 41 influenza detections reported for week 50: *Expected level*
- 122 total influenza detections reported to date
- 3% influenza-like-illness (ILI) among emergency department visits: *Expected level*
- 0 influenza-related deaths reported to date: *Expected level*
- 8% percent of deaths registered with Pneumonia & Influenza: *Expected level*

Current Status

- Influenza activity remains at baseline level
- CA Department of Public Health [Influenza Surveillance](#)
- CDC Influenza Surveillance [Weekly Report](#)

Table 1. Influenza Detections Reported, FY 2013-14*

Positive Test Type/Subtype	Week 50	Total To-Date
Influenza A†	28	69
Influenza A (H1) Seasonal	0	0
Influenza A (H3) Seasonal	1	9
Pandemic 2009 H1N1	10	36
Influenza B	2	7
Influenza A/B†	0	1
Total	41	122

* FY is July 1- June 30, or Week 27 - 26.

† No further characterization performed or results not available at time of publication.

Note: Totals may change due to further laboratory findings.

Table 2. Influenza Surveillance Indicators

Indicator	FY 2013-14			FY 2012-13		Prior 3-Year Average**	
	Week 50	Week 49	FYTD	Week 50	FYTD (FY Total)	Week 50	FYTD (FY Total)
Influenza detections reported (all types)*	41	27	122	17	106	49	151
Percent of emergency department visits for ILI	3%	2%		1%		3%	
Percent of deaths registered with pneumonia and/or influenza	8%	6%		5%		6%	
Number of influenza-related deaths reported^	0	0	0	0	1 (65)	0	0 (34.3)

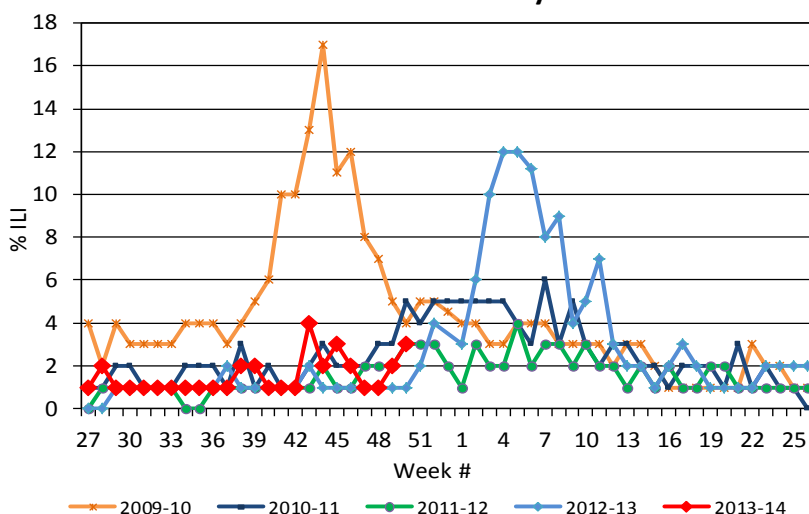
FYTD=Fiscal year to date; FY is July 1-June 30 (Week 27-26)

* Includes rapid and laboratory confirmed results

** Includes FYs 2010-11, 2011-12, and 2012-13

^Current FY deaths are shown by week of report; by week of death for prior FYs

Figure 1. Percent of Emergency Department Visits for Influenza-like-Illness by Week and FY



Influenza Reporting

Local providers are encouraged to report any laboratory positive influenza detections to the County's Epidemiology Program by **FAX to (858) 715-6458**. Please fax a [Case Report Form](#) and/or a printed laboratory result. If known, please indicate if patient was admitted to ICU or died. For questions regarding sending specimens to Public Health Laboratory (PHL), call (619) 692-8500. Click here for the updated PHL [PCR Test Request Form](#). Contact Epidemiology with any questions at **(619) 692-8499** or EpiDiv.HHSA@sdcounty.ca.gov.

Immunization Resources

County of San Diego Immunization Branch
www.sdiz.org

Influenza surveillance is a collaborative effort between the County of San Diego Epidemiology and Immunization Services Branch and the medical community. Thank you!

Figure 2. San Diego County Influenza Detections by Type and Week of Report, 2013-14 YTD (N=122)

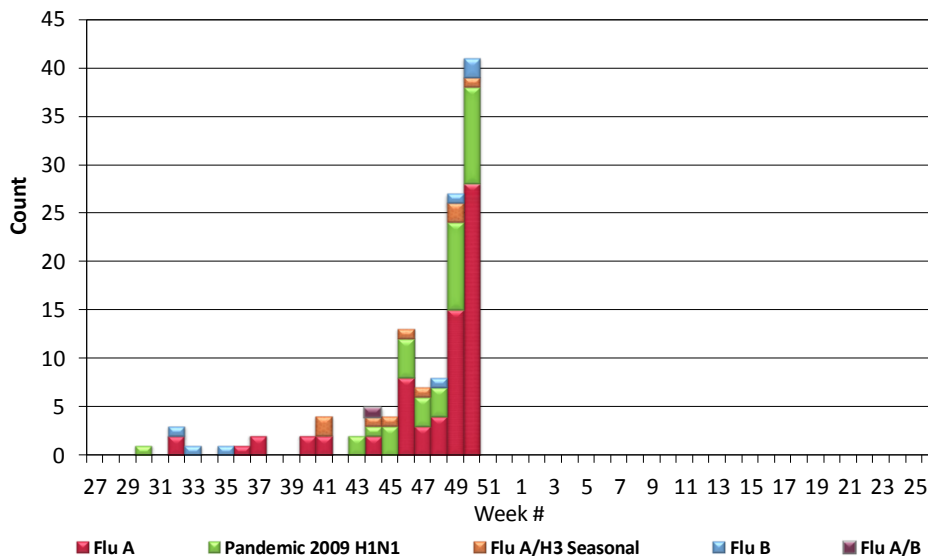
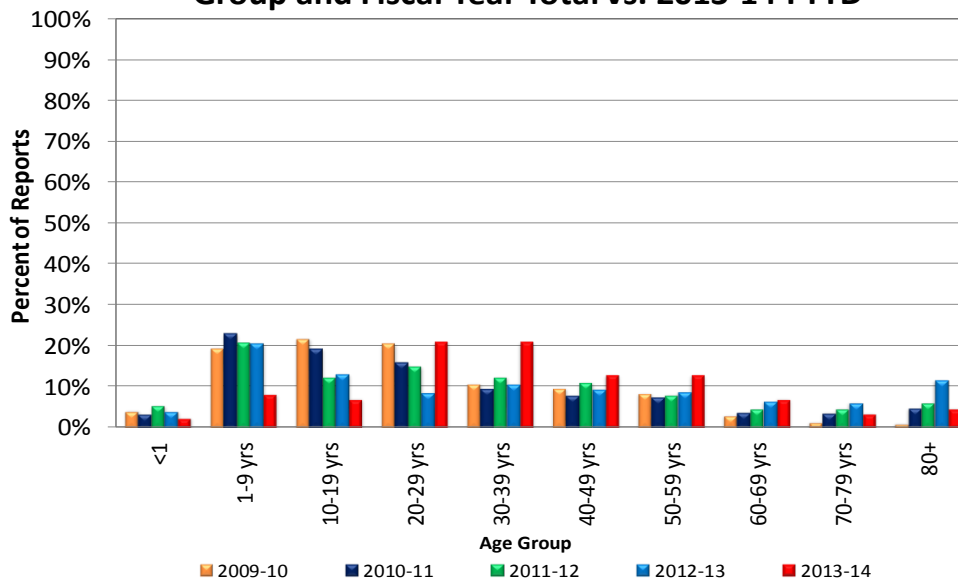


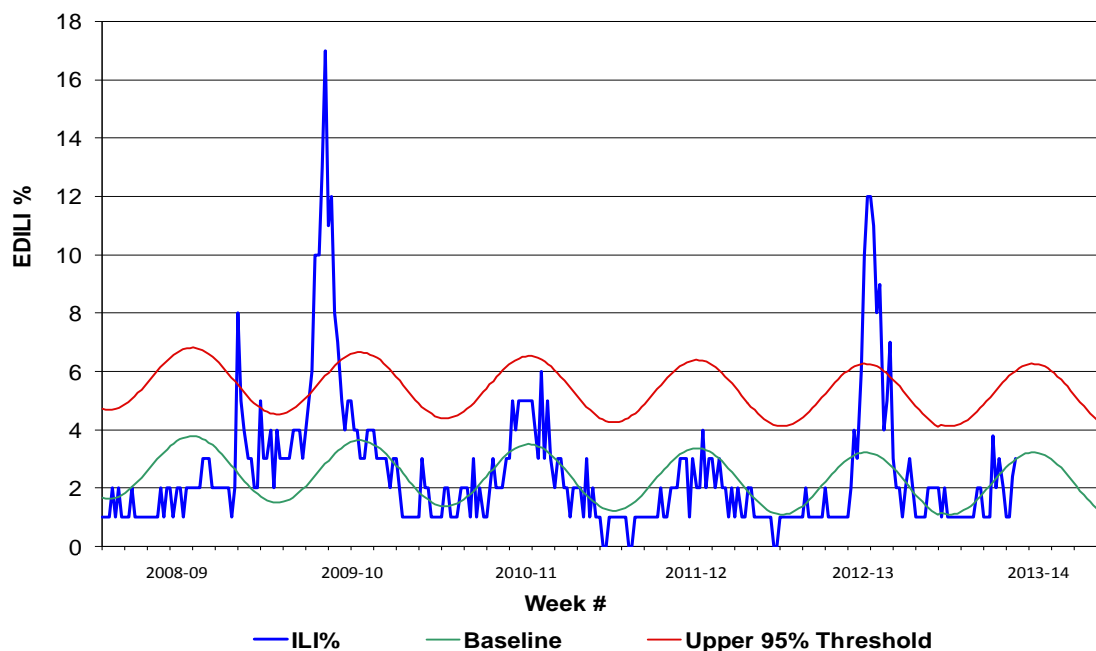
Figure 3. Percent of Reported Influenza Cases by Age Group and Fiscal Year Total vs. 2013-14 FYTD



Influenza Vaccination for Asthmatics Getting Better, But Not Good Enough!

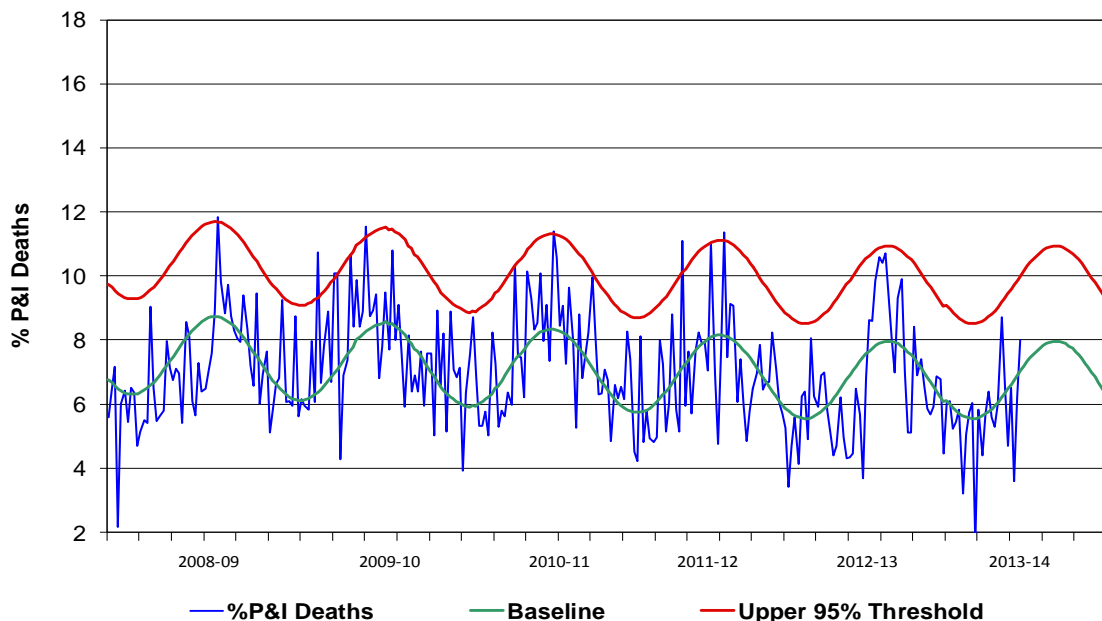
Asthma is a high risk condition for severe outcomes with influenza. The Centers for Disease Control and Prevention recently reported on vaccination coverage rates among persons with asthma in the United States. More Americans with asthma were vaccinated for influenza during the 2010-11 season (50%) than in the 2005-06 season (36%). That’s the good news. The bad news is that coverage rates for asthmatics are still far below the [Healthy People 2020 targets](#) of 80% coverage of children aged 6 months to 17 years and 90% coverage of adults 18+ years at high risk. The figures for San Diego also show great room for improvement. Approximately 47% of San Diegans with self-identified asthma reported having been vaccinated for influenza in 2011-12, according to the California Health Interview Survey (CHIS). While this is better than the 38% of San Diegans without asthma who reported being vaccinated, clinicians are urged to be sure that all patients with asthma understand the importance of getting the annual influenza vaccination. For more information on coverage rates among persons with asthma, see [MMWR December 6, 2013 / 62\(48\):973-978](#)

Figure 4. Percent of San Diego County Emergency Department Visits for Influenza-like-Illness by Week and FY Compared to 5-Year Baseline & Upper 95% Threshold Values (Serfling Method)



Note: Influenza-like-illness is defined as fever $\geq 100^{\circ}\text{F}$, and cough and/or sore throat.

Figure 5. Percent of All San Diego County Deaths Registered with Pneumonia and/or Influenza by Week and FY Compared to Prior 5-Year Baseline & Upper 95% Threshold (Serfling Method)



Note: Includes any death certificates registered with pneumonia and/or influenza listed anywhere on the death certificate.