

The purpose of the weekly *Influenza Watch* is to summarize current influenza surveillance in San Diego County. **Please note that reported weekly totals are preliminary and may change due to additional confirmatory or subtype laboratory results.**

Current Week #49 (ending 12/7/2013)

- 27 influenza detections reported for week 49: *Expected level*
- 81 total influenza detections reported to date
- 2% influenza-like-illness (ILI) among emergency department visits: *Expected level*
- 0 influenza-related deaths reported to date: *Expected level*
- 6% percent of deaths registered with Pneumonia & Influenza: *Expected level*

Current Status

- Influenza activity remains at baseline level
- CA Department of Public Health [Influenza Surveillance](#)
- CDC Influenza Surveillance [Weekly Report](#)

Table 1. Influenza Detections Reported, FY 2013-14*

Positive Test Type/Subtype	Week 49	Total To-Date
Influenza A†	15	41
Influenza A (H1) Seasonal	0	0
Influenza A (H3) Seasonal	2	8
Pandemic 2009 H1N1	9	26
Influenza B	1	5
Influenza A/B†	0	1
Total	27	81

* FY is July 1- June 30, or Week 27 - 26.

† No further characterization performed or results not available at time of publication.

Note: Totals may change due to further laboratory findings.

Table 2. Influenza Surveillance Indicators

Indicator	FY 2013-14			FY 2012-13		Prior 3-Year Average**	
	Week 49	Week 48	FYTD	Week 49	FYTD (FY Total)	Week 49	FYTD (FY Total)
Influenza detections reported (all types)*	27	8	81	20	89	26	102
Percent of emergency department visits for ILI	2%	1%		1%		2%	
Percent of deaths registered with pneumonia and/or influenza	6%	4%		4%		9%	
Number of influenza-related deaths reported^	0	0	0	0	1 (65)	0	0 (34.3)

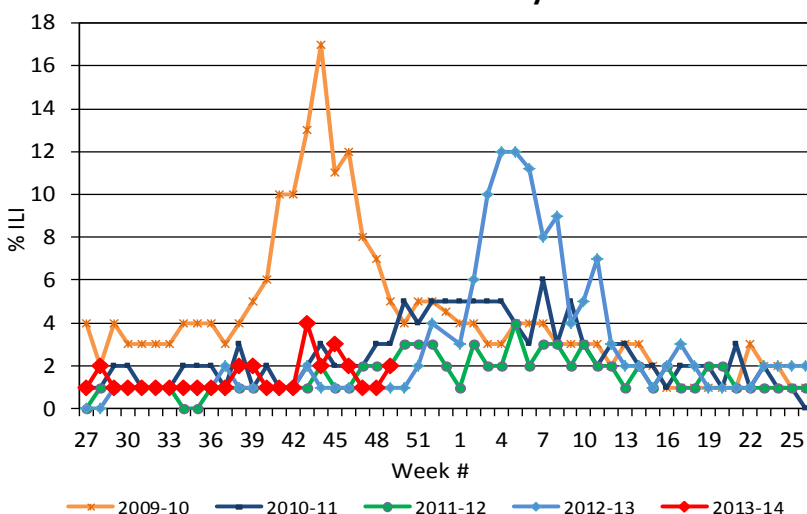
FYTD=Fiscal year to date; FY is July 1-June 30 (Week 27-26)

* Includes rapid and laboratory confirmed results

** Includes FYs 2010-11, 2011-12, and 2012-13

^Current FY deaths are shown by week of report; by week of death for prior FYs

Figure 1. Percent of Emergency Department Visits for Influenza-like-Illness by Week and FY



Influenza Reporting

Local providers are encouraged to report any laboratory positive influenza detections to the County's Epidemiology Program by **FAX to (858) 715-6458**. Please fax a [Case Report Form](#) and/or a printed laboratory result. If known, please indicate if patient was admitted to ICU or died. For questions regarding sending specimens to Public Health Laboratory (PHL), call (619) 692-8500. Click here for the updated PHL [PCR Test Request Form](#). Contact Epidemiology with any questions at **(619) 692-8499** or EpiDiv.HHSA@sdcounty.ca.gov.

Immunization Resources

County of San Diego Immunization Branch
www.sdiz.org

Influenza surveillance is a collaborative effort between the County of San Diego Epidemiology and Immunization Services Branch and the medical community. Thank you!

Figure 2. San Diego County Influenza Detections by Type and Week of Report, 2013-14 YTD (N=81)

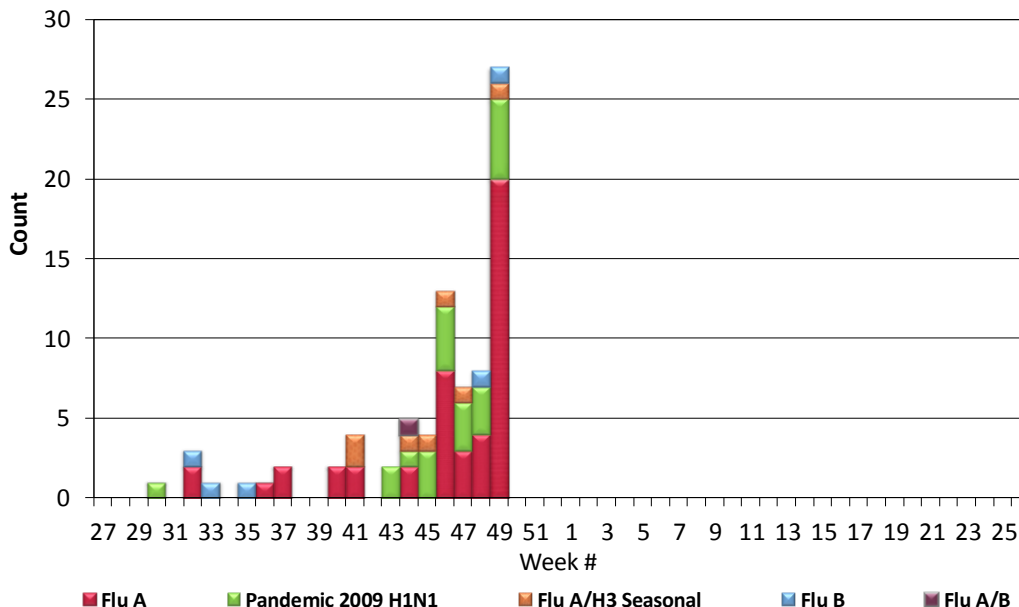
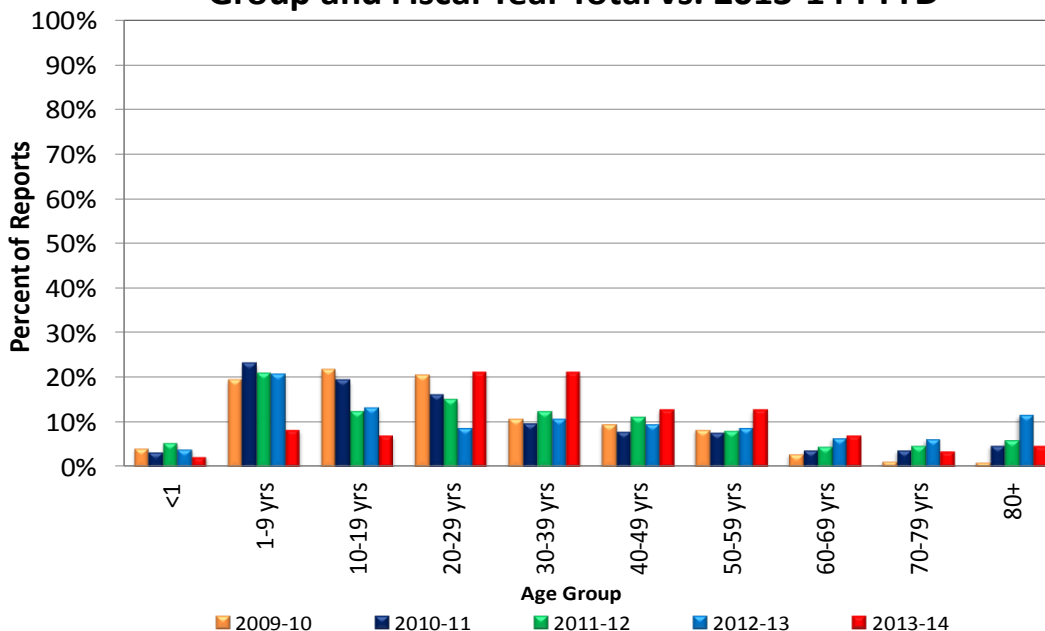


Figure 3. Percent of Reported Influenza Cases by Age Group and Fiscal Year Total vs. 2013-14 FYTD



December 8–14, 2013 is National Influenza Vaccination Week!

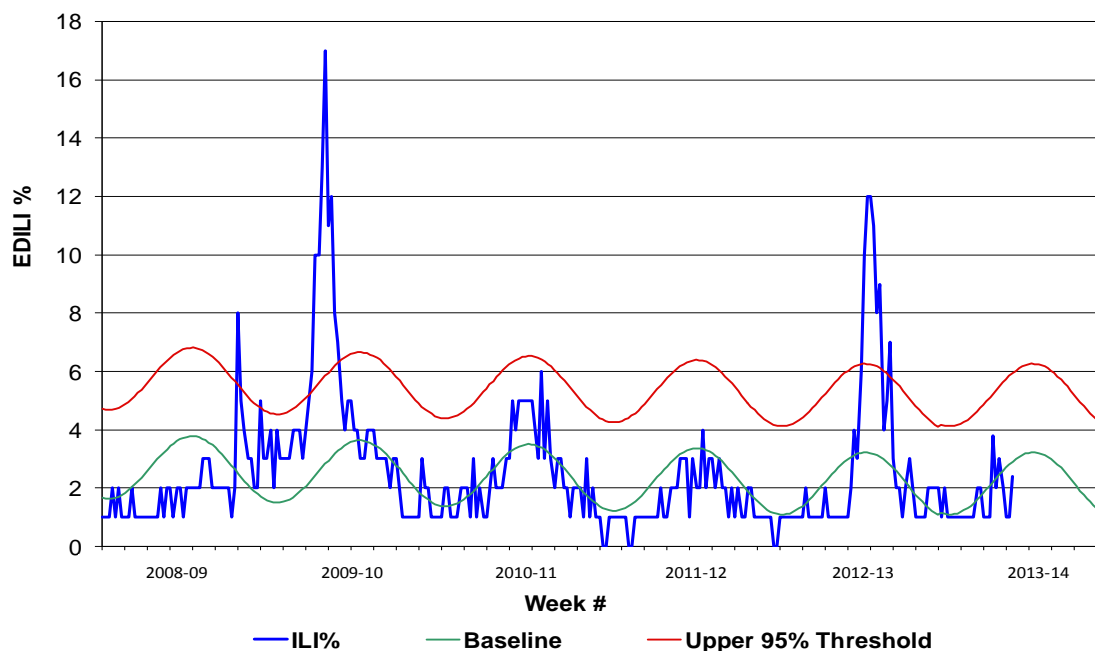
Obtain useful influenza vaccination educational and promotional materials from the CDC at:

<http://www.cdc.gov/flu/nivw/index.htm>

Timely immunization information and links to resources and services for San Diegans may be found at:

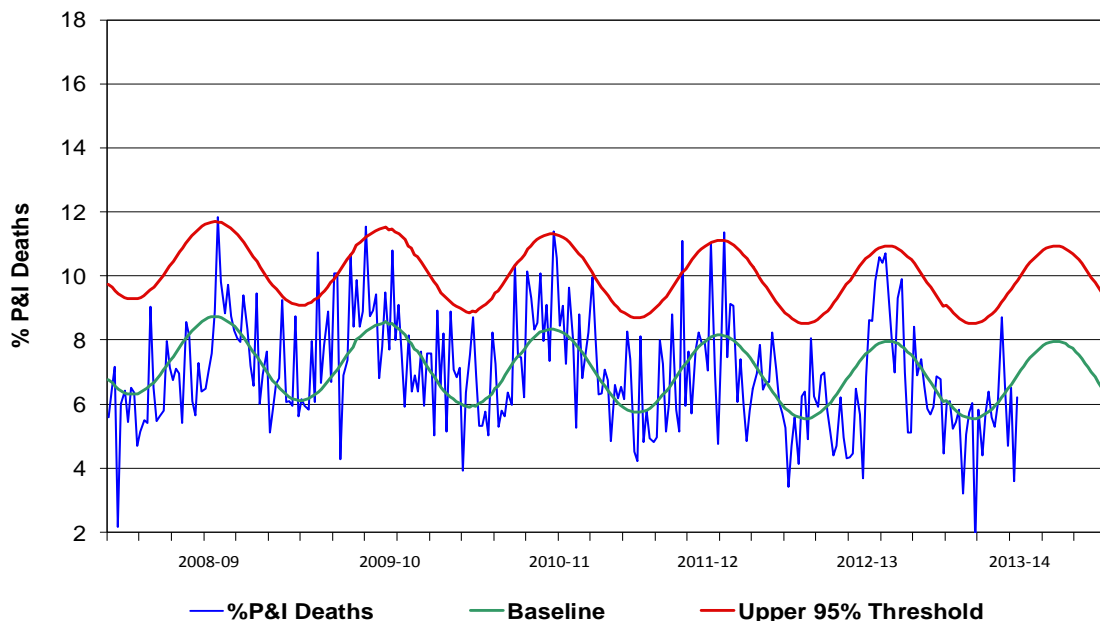
<http://www.sdiz.org/>

Figure 4. Percent of San Diego County Emergency Department Visits for Influenza-like-Illness by Week and FY Compared to 5-Year Baseline & Upper 95% Threshold Values (Serfling Method)



Note: Influenza-like-illness is defined as fever $\geq 100^{\circ}\text{F}$, and cough and/or sore throat.

Figure 5. Percent of All San Diego County Deaths Registered with Pneumonia and/or Influenza by Week and FY Compared to Prior 5-Year Baseline & Upper 95% Threshold (Serfling Method)



Note: Includes any death certificates registered with pneumonia and/or influenza listed anywhere on the death certificate.