

The purpose of the weekly *Influenza Watch* is to summarize current influenza surveillance in San Diego County. **Please note that reported weekly totals are preliminary and may change due to additional confirmatory or subtype laboratory results.**

### Current Week #48 (ending 11/30/2013)

- 8 influenza detections reported for week 48: *Expected level*
- 54 total influenza detections reported to date
- 1% influenza-like-illness (ILI) among emergency department visits: *Expected level*
- 0 influenza-related deaths reported to date: *Expected level*
- 4% percent of deaths registered with Pneumonia & Influenza: *Expected level*

### Current Status

- Influenza activity remains at baseline level
- CA Department of Public Health [Influenza Surveillance](#)
- CDC Influenza Surveillance [Weekly Report](#)

**Table 1. Influenza Detections Reported, FY 2013-14\***

| Positive Test Type/Subtype | Week 48  | Total To-Date |
|----------------------------|----------|---------------|
| Influenza A†               | 5        | 27            |
| Influenza A (H1) Seasonal  | 0        | 0             |
| Influenza A (H3) Seasonal  | 0        | 6             |
| Pandemic 2009 H1N1         | 2        | 16            |
| Influenza B                | 1        | 4             |
| Influenza A/B†             | 0        | 1             |
| <b>Total</b>               | <b>8</b> | <b>54</b>     |

\* FY is July 1- June 30, or Week 27 - 26.

† No further characterization performed or results not available at time of publication.

Note: Totals may change due to further laboratory findings.

**Table 2. Influenza Surveillance Indicators**

| Indicator  | FY 2013-14 |         |      | FY 2012-13 |                 | Prior 3-Year Average** |                 |
|--|------------|---------|------|------------|-----------------|------------------------|-----------------|
|  | Week 48    | Week 47 | FYTD | Week 48    | FYTD (FY Total) | Week 48                | FYTD (FY Total) |
| Influenza detections reported (all types)*                   | 8          | 7       | 54   | 15         | 69              | 18                     | 76              |
| Percent of emergency department visits for ILI               | 1%         | 1%      |      | 1%         |                 | 2%                     |                 |
| Percent of deaths registered with pneumonia and/or influenza | 4%         | 7%      |      | 4%         |                 | 5%                     |                 |
| Number of influenza-related deaths reported^                 | 0          | 0       | 0    | 0          | 1 (65)          | 0                      | 0 (34.3)        |

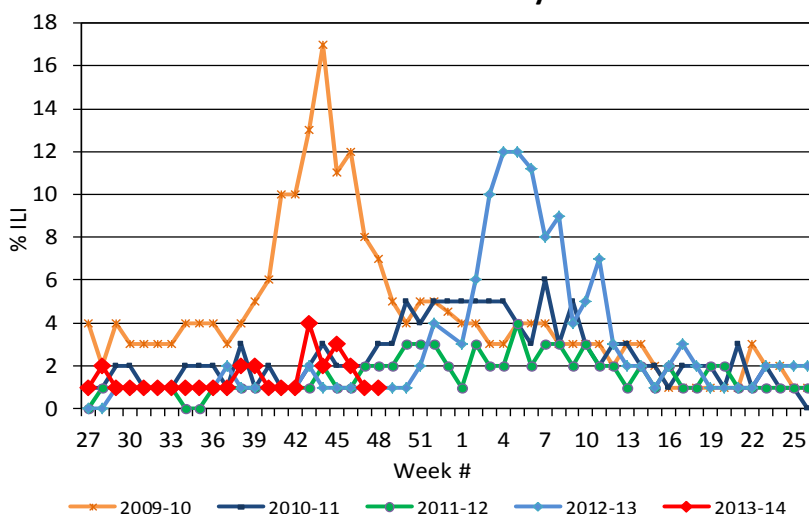
FYTD=Fiscal year to date; FY is July 1-June 30 (Week 27-26)

\* Includes rapid and laboratory confirmed results

\*\* Includes FYs 2010-11, 2011-12, and 2012-13

^Current FY deaths are shown by week of report; by week of death for prior FYs

**Figure 1. Percent of Emergency Department Visits for Influenza-like-Illness by Week and FY**



### Influenza Reporting

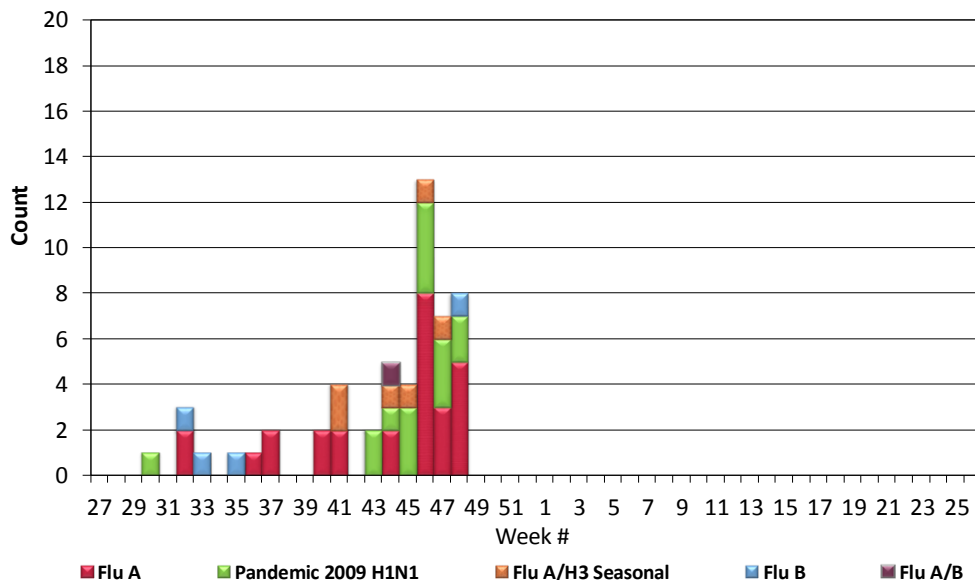
Local providers are encouraged to report any laboratory positive influenza detections to the County's Epidemiology Program by **FAX to (858) 715-6458**. Please fax a [Case Report Form](#) and/or a printed laboratory result. If known, please indicate if patient was admitted to ICU or died. For questions regarding sending specimens to Public Health Laboratory (PHL), call (619) 692-8500. Click here for the updated PHL [PCR Test Request Form](#). Contact Epidemiology with any questions at **(619) 692-8499** or [EpiDiv.HHSA@sdcounty.ca.gov](mailto:EpiDiv.HHSA@sdcounty.ca.gov).

### Immunization Resources

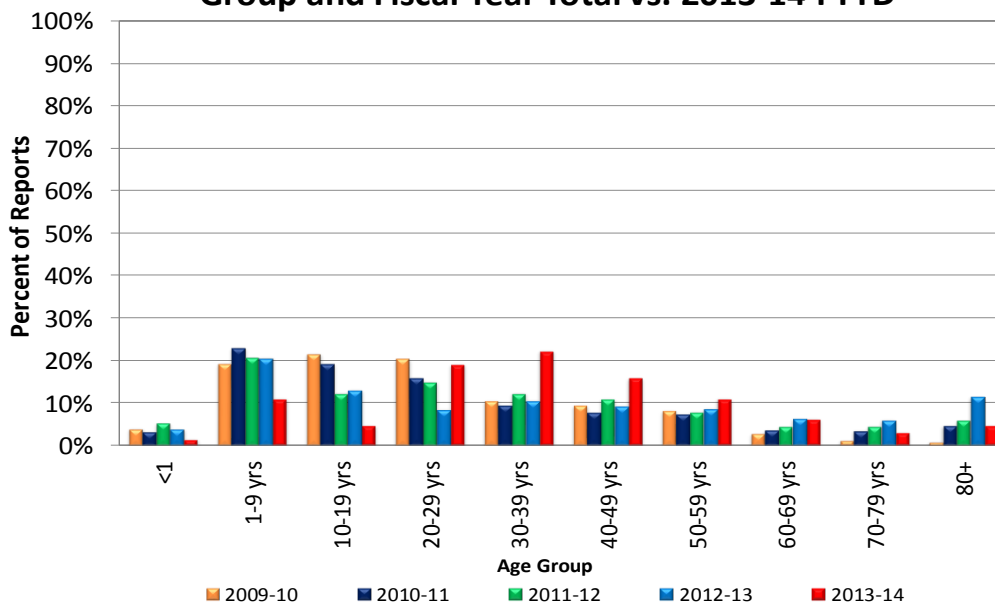
County of San Diego Immunization Branch  
[www.sdiz.org](http://www.sdiz.org)

Influenza surveillance is a collaborative effort between the County of San Diego Epidemiology and Immunization Services Branch and the medical community. Thank you!

**Figure 2. San Diego County Influenza Detections by Type and Week of Report, 2013-14 (N=54)**



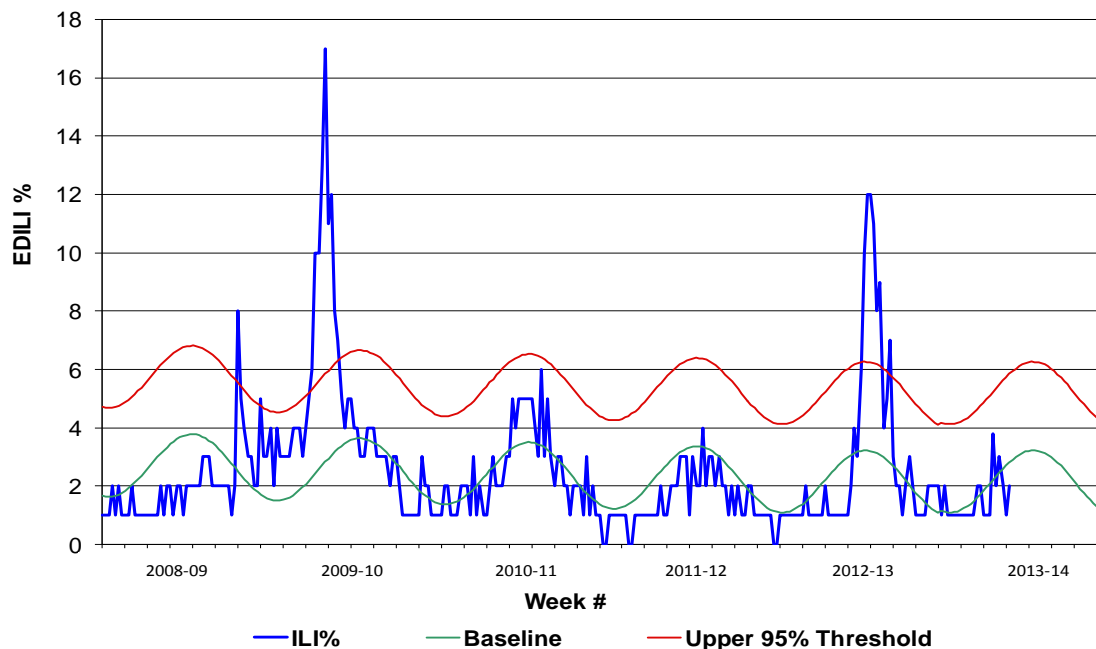
**Figure 3. Percent of Reported Influenza Cases by Age Group and Fiscal Year Total vs. 2013-14 FYTD**



**Influenza and Cardiovascular Outcomes**

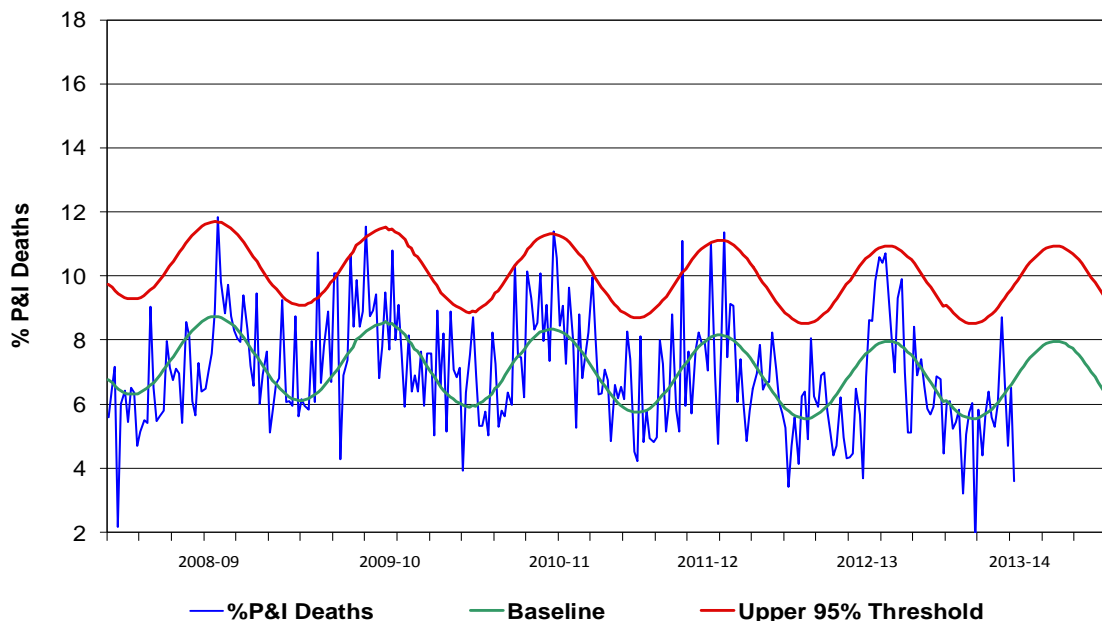
A recent study published by the Journal of the American Medical Association found that getting vaccinated to protect yourself against flu also reduces the risk of morbidity from an adverse cardiovascular event such as heart attack or stroke. The study also showed a benefit to those who already had coronary artery disease by decreasing the risk of experiencing a serious heart problem. These findings are relevant to San Diego County since cardiovascular disease has consistently been identified as a top risk factor for influenza mortality. During the 2012-2013 influenza season, 34 of 65 fatal cases had cardiovascular disease as an underlying medical condition. For more information see [Association Between Influenza Vaccination and Cardiovascular Outcomes in High-Risk Patients](#)

**Figure 4. Percent of San Diego County Emergency Department Visits for Influenza-like-Illness by Week and FY Compared to 5-Year Baseline & Upper 95% Threshold Values (Serfling Method)**



Note: Influenza-like-illness is defined as fever  $\geq 100^{\circ}\text{F}$ , and cough and/or sore throat.

**Figure 5. Percent of All San Diego County Deaths Registered with Pneumonia and/or Influenza by Week and FY Compared to Prior 5-Year Baseline & Upper 95% Threshold (Serfling Method)**



Note: Includes any death certificates registered with pneumonia and/or influenza listed anywhere on the death certificate.