



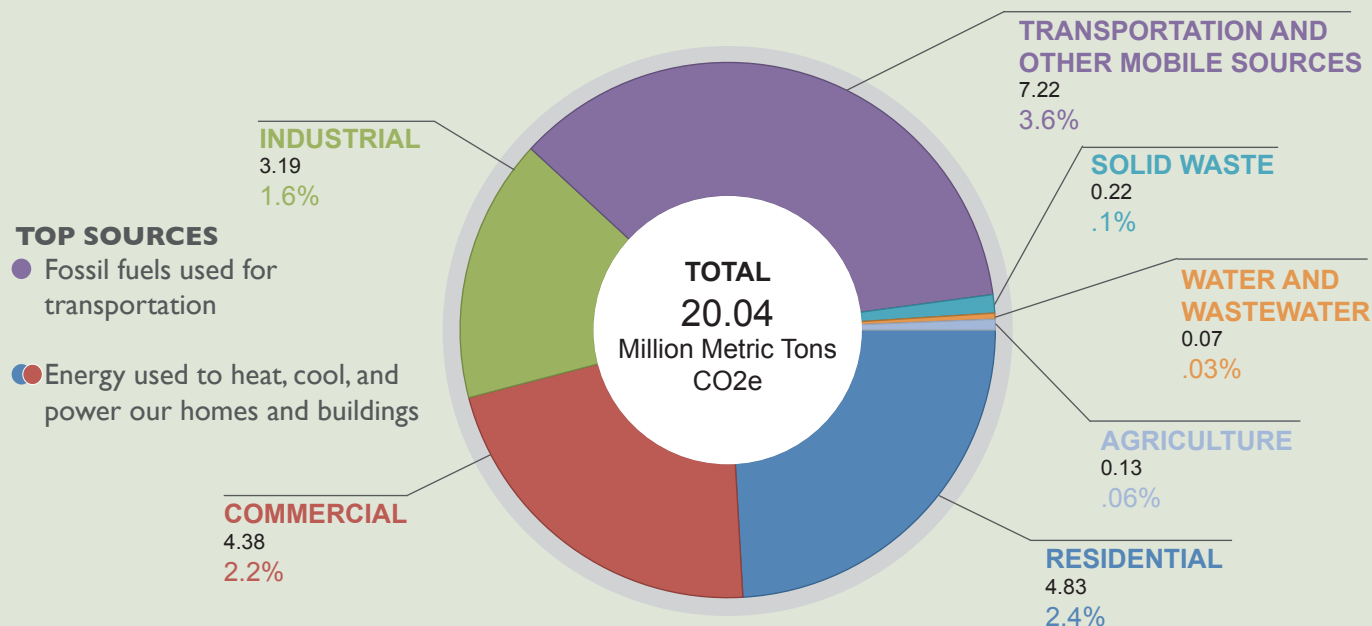
King County

CLIMATE ACTION

Clean Future. Strong Communities.

KING COUNTY GREENHOUSE GAS (GHG) EMISSIONS SOURCES, TRENDS AND HOW TO ACHIEVE TARGETS

What are the sources of King County GHG emissions?



King County also periodically estimates GHG emissions associated with the consumption of goods and services by all residents, no matter where the emissions physically occur. Countywide emissions more than double geographic-based emissions using this accounting approach. Learn more at www.kingcounty.gov/climate

How have emissions per person changed?

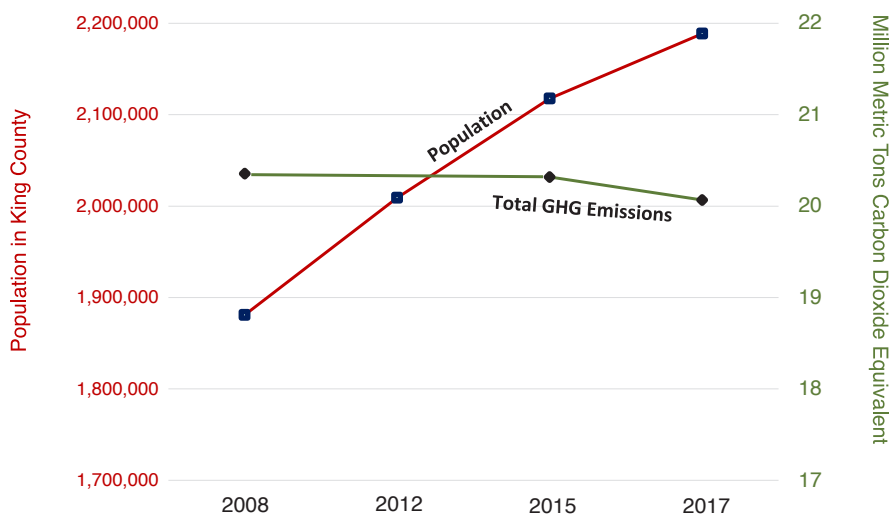
KEY TRENDS (2007 - 2017)

Total Population **+16.4%**

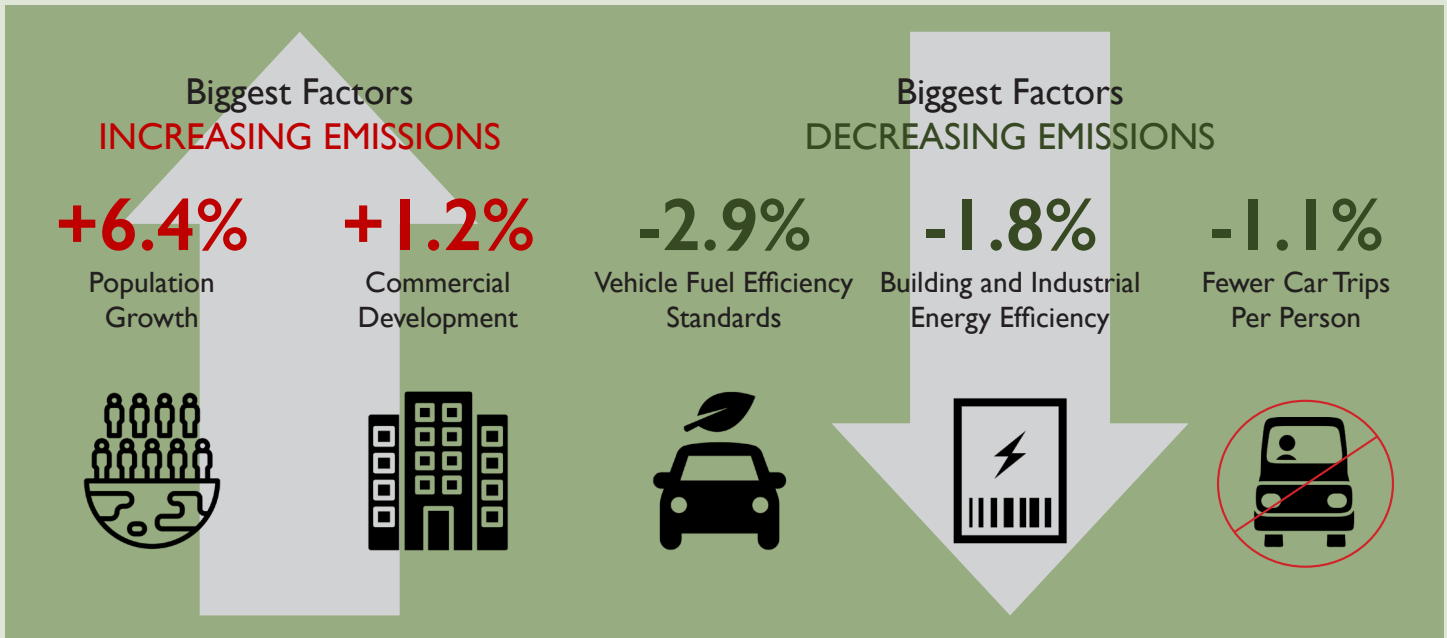
Total GHG Emissions **-1.2%**



King County GHG Emissions and Population Trends



Why have emissions changed?



Where do we go from here?

The wedge analysis forecasts emissions from 2017 through 2050 under a business as usual scenario and then models the impact of nine reduction actions over that time period. The actions were developed to cumulatively achieve County and shared Growth Management Planning Council's countywide emission reduction goals to reduce emissions 50% from 2007 baseline emissions in 2030, and by 80% in 2050.

King County Wedge Analysis to Achieve Shared Countywide GHG Targets

