

Erosion Guard

Information

- Available in 50 foot sections. Each 50 foot section can be connected to the next with a nylon strap and D-ring connection.
- The non-wire frame of the bags allows it to take the shape of the ground, which increases its actual footprint.
- The bags can be filled with asphalt millings, sand, concrete, or other material.
- Permanent Bags filled with sand or millings can be used to stabilize slides and road shoulders.
- Permanent bags filled with concrete are used to stabilize slides, re-enforce creek and river banks, and to provide road shoulders.

Performance

- Sections: 50' long with 25 individual 2' wide cells
- Sizes: Purchasable in 2', 3', 4', & 6' heights
- Material: Woven polypropylene- fabric
- UV Resistance: 70% after 2000 daylight hours
- Tensile Strength: 390 lbs x 360 lbs (ASTM D1682)
- Puncture Strength: > 100 lbs (ASTM D751 with 5/16 hemispherical tip)
- Water tight
- Rapidly deployable

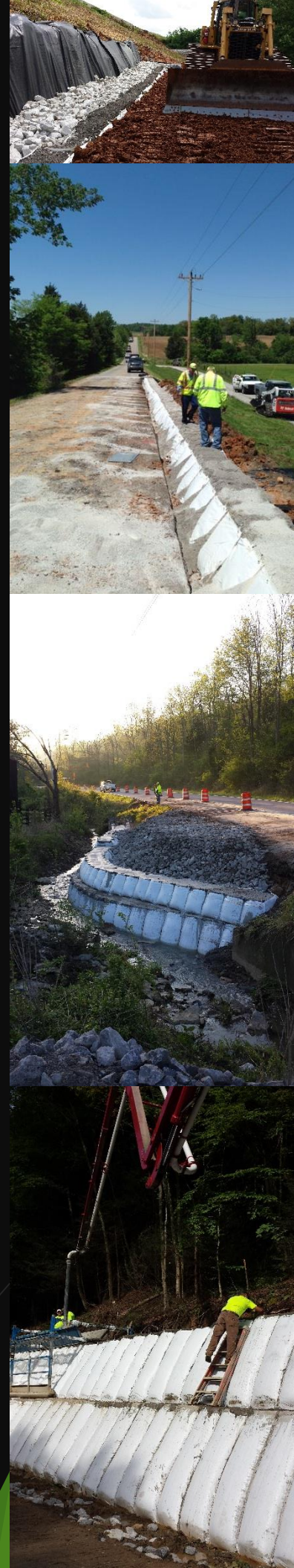
Specifications

Size	Height of system	Top opening	Bottom Width	2' cell Volume	Approx. weight of sand filled cell*	Approx. weight of concrete cell**
2' Bag	24"	24"	48"	12.0 cu ft	1200 lbf	1738 lbf
3' Bag	36"	24"	60"	21.0 cu ft	2100 lbf	3160 lbf
4' Bag	48"	24"	72"	32.0 cu ft	3200 lbf	4740 lbf
6' Bag	72"	24"	84"	60.0 cu ft	6000 lbf	8808.5 lbf

* Fill weight per cell of sand is based on 100 lbf/cu ft

** Fill weight per cell of concrete is based on 3950 lbf/ cu yrd

A & A ENTERPRISES, LLC
 667 Tip Top Rd. Vine Grove, KY 40175
 (270) 351- 2441 | Email Address | Web Address





A & A ENTERPRISES, LLC
667 Tip Top Rd. Vine Grove, KY 40175
(270) 351- 2441 | WWW.AAGRS.com

