

# Granville Harbour Wind Farm Community Newsletter

*Substantial site works at Granville Harbour Wind Farm have been completed since our first community update in December last year. We're pleased to share what our construction crews have been up to and update you on some of the initiatives we are planning for the coming months.*

## Granville Harbour Wind Farm taking shape

Construction activity is ramping up for Tasmania's newest wind farm with over 80 people now working at the remote site near Zeehan.

Access roads, operations buildings, environmental controls and site signage are in place and crews are now preparing foundations for the installation of the wind farm's 31 wind turbines.

The design and construction of each wind turbine foundation is critical as it needs to be capable of supporting towers up to 137 metres in height. The first step is excavation, with each foundation being 20 metres in diameter and 3.7 metres deep. Piles are then drilled and filled with grout to increase the bearing capacity of the soil. The subgrade soil is then capped and ready for installation of steel reinforcements, conduits and structural concrete. Each foundation takes about one month to complete.



Aerial view of construction works for a wind turbine foundation



## Site welcomes first visitors

We have been lucky to host a number of special visitors at site recently. In March, Regional Development Tasmania (pictured above) dropped by to discuss the economic and social contribution Granville Harbour Wind Farm will make to the Tasmanian economy.

In April, eleven members of the West Coast Council visited for an update on how site works are progressing.

These site visits enable us to demonstrate how much progress has been made onsite and share our passion for building Tasmania's newest wind farm with others.

**GRANVILLE HARBOUR**  
WIND FARM





## Big deliveries planned for the West Coast

Months of planning has recently been completed to determine the best way to transport 372 oversize wind turbine components – including blades, tower sections, hubs and nacelles – from our storage facility in Burnie to the wind farm site.

Custom built trucks up to 70 metres in length, and weighing up to 50 tonnes, will transport large items to site in some of the biggest road movements ever seen in Tasmania. All oversize loads will be accompanied by escort vehicles to manage traffic and ensure the safety of all road users. Deliveries are expected to commence in June and will take place between the hours of 3am and 11am, Monday to Saturday, or six days of the week.

A \$2.5 million roadworks program has now been completed along the approved transport route to prepare the roads, intersections and bridges, and ensure the safe passage of oversize loads.

Further information about the delivery schedule, road safety and what it means for local road users will be provided before any deliveries begin.



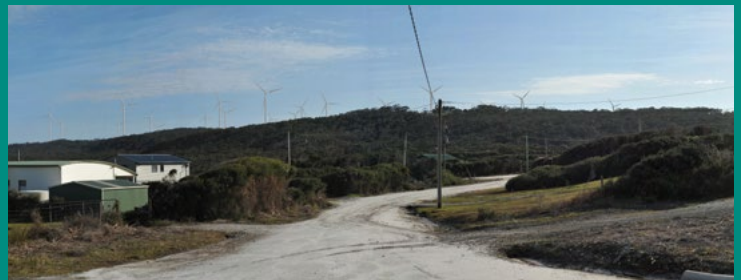
Transport route from Burnie to Granville Harbour Wind Farm

## Wind turbine technology

Soon after the first deliveries to site, construction crews will start erecting the wind farm's 31 wind turbines. 3.6MW turbines manufactured by global wind energy experts, Vestas, are amongst the most economic and efficient wind technology available. To maximise the amount of clean energy the wind farm can produce, the turbines will be mounted on steel towers 137 metres high – making Granville Harbour the tallest wind farm in Tasmania.

Wind turbines will be visible from several viewpoints around Granville Harbour, however the main features of the local landscape will not be obscured or diminished.

The image below provides a visual impression of how the wind farm will look from Cannonball Drive, Granville Harbour, facing North.



## Supporting the local economy

Currently, there are around 50 Tasmanian workers employed across the project and a number of those are local to the West Coast.

We're also investing in the local economy – to date around \$2.8 million has gone directly to Tasmanian suppliers, with over \$600 thousand of that spent in the West Coast. This includes things like accommodation, storage and local consultants.

## Wildlife protection program

We are committed to protecting local wildlife and making sure our activities are done in a way that reduces our impact on the environment as much as possible.

Our wildlife protection program includes pre-clearance surveys, awareness programs and managing potential impacts from road kill. All our workers participate in regular training and induction programs that include information on the protection of wildlife.

## Stay in touch

To find out more about the Granville Harbour Wind Farm project, please contact us:

**Website:** [granvilleharbourwindfarm.com.au](http://granvilleharbourwindfarm.com.au)  
**Email:** [enquiries@granvilleharbourwindfarm.com.au](mailto:enquiries@granvilleharbourwindfarm.com.au)  
**Phone:** 0416 698 158

 Follow us on Instagram  
[@granvilleharbourwind](https://www.instagram.com/granvilleharbourwind)



**GRANVILLE  
HARBOUR**  
WIND FARM