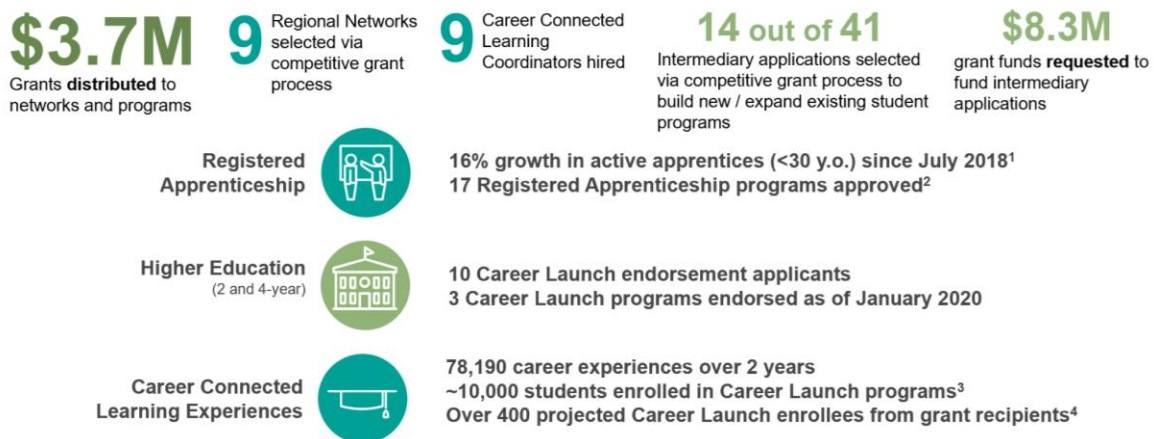




As part of the Workforce Education and Investment Act (HB 2158), the legislature made Career Connect Washington (CCW) a reality.

The funding passed in 2019 as part of HB 2158 has allowed CCW to build education and training curriculums that will prepare students for today’s careers, increase enrollment in both existing and new career connected learning programs, and develop new registered apprenticeships in health care, advanced manufacturing, construction and information technology, among other fields. CCW is driving forward progress towards a statewide career connected learning system:



In response to the demand expressed for grant funding and building awareness about these programs, the Governor has added the following items to the budget for the 2020 session.

This includes funding for portions of the legislation which were left unfunded and which are essential to continuing to make progress toward our goal of 100% student exposure to career connected learning opportunities and 60% enrollment in Career Launch programs by 2030. If we are to meet our goal of creating 120 new and expanded career connected learning programs serving 5,000 young people over this biennium, this funding is essential. **Furthermore, each dollar invested by the State yields 11 times that amount in the form of wages, training, and supervision for young people.**



Scaling student enrollment and supports - \$0.2M

Funding for new CCW tribal liaison position at OSPI to support tribal youth access to and enrollment in career connected learning programs



Getting the word out - \$1.4M

Provides necessary support to build awareness among students, families, and educators for CCW and career connected learning programs available statewide. Funding towards marketing and communications efforts and the creation of a new, statewide program directory. Additional support for ERDC to aggregate and report on CCW outcomes.



Growing career connected learning programs - \$0.9M

Additional funding to create new and expand existing career connected learning programs, with an emphasis on Career Launch

1. Apprenticeship numbers reflect total growth, influenced by a variety of factors, including a significant economic expansion state-wide; 2. Active Registered Apprenticeship programs approved in or after July 2018; 3. Includes 9,684 active apprentices under 30 years old as of September 1, 2019; 4. Projected enrollment across all Career Launch grantees after 2 years of operation

Appendix

9 Regional Networks funded with \$09.M

Network: Karen Borders
borders@sksschools.org

CCL Coordinator: Kimberly Hetrick
khetrick@oesd114.org

Counties: Clallam, Jefferson, Kitsap, and Mason

Network: Joy Emory
joy.emory@workforcesnohomish.org

CCL Coordinator: Bre Urness-Straight
burnesstraigh@nwesd.org

Counties: Island, San Juan, Skagit, Snohomish, and Whatcom

Network: Sue Kane
suek@ncesd.org

CCL Coordinator: Tami McBride
tamim@ncesd.org

Counties: Chelan, Douglas, Grant, and Okanogan

Network: Phyllis Harvey-Buschel
phyllis@wabsalliance.org

CCL Coordinator: Walter Jackson
wjackson@psesd.org

Counties: King and Pierce

Network: Cassidy Peterson
cpeterson@greaterspokane.org

CCL Coordinator: Dennis Conger
dconger@esd101.net

Counties: Adams, Ferry, Lincoln, Pend Oreille, Spokane, Steven, and Whitman

Network: Lorie Thompson
lthompson@esd113.org

CCL Coordinator: Pat Lange
plange@esd113.org

Counties: Grays Harbor, Lewis, Mason, Pacific, and Thurston

Network: Debra Bowen
deb@STEMlearning.org

CCL Coordinator: Greg Fancher
gfanher@esd123.org

Counties: Asotin, Benton, Columbia, Franklin, Garfield, and Walla Walla

Network: Vickie Hrdina
vickie.hrdina@esd112.org

CCL Coordinator: Scott Culbertson
scott.culbertson@esd112.org

Counties: Clark, Cowlitz, Klickitat, Pacific, Skamania, and Wahkiakum

Network: Mark Cheney
mark.cheney@esd105.org

CCL Coordinator: Hugo Moreno
hugo.moreno@esd105.org

Counties: Grant, Kittitas, Klickitat, and Yakima

14 intermediaries funded with \$2.8M

		Aerospace	Agriculture / Food Processing	Automotive	Construction	Health care	Hospitality	Information Technology	Manufacturing	Maritime	
First Round	ANEW	Construction trades <u>Career Preparation</u> / pre-apprenticeship (King)									
	Computing for All	Develop <u>Career Preparation</u> / pre-apprenticeship program to prepare students for Apprenti and similar programs (King)									
	AJAC	Expand General Service Technician <u>Registered Apprenticeships</u> ; Master Service Technician <u>Registered Apprenticeships</u> (Pierce)									
	OESD 114	Develop new construction trades and maritime (specifically marine construction, fisheries, maritime logistics) <u>Career Launches</u> (Kitsap)									
	SEIU	Create new Central Sterile Processing Technician and Pharmacy Technician <u>Reg. Apprenticeships</u> ; Expand Medical Assisting <u>Reg. Apprenticeship</u> programs (King)									
	SkillsSource	✓						✓	✓		
	SPOKANE WORKFORCE COUNCIL	Expand existing manufacturing <u>Registered Apprenticeship</u> programs, with AJAC as one of the primary partners (Spokane)									
	WORKFORCE	Expand AJAC manufacturing <u>Youth Registered Apprenticeships</u> , including expansion to food processing and agriculture industries (Southcentral Region/Yakima)									
Second Round	WABS	Develop new <u>Career Launch</u> programs with T-Mobile, focused on data management, advanced analytics, artificial intelligence, etc. (King)									
	workforce	Expand semiconductor <u>Career Launch*</u> program; Develop a new medical assisting <u>Career Launch</u> (Clark/Cowlitz)									
	WASHINGTON STATE UNIVERSITY	Design and deliver <u>Career Awareness</u> program for middle school students health sciences and healthcare delivery sectors (Stevens)									
	WENACHEE VALLEY COLLEGE	Develop <u>Career Launch</u> engineering / machining production program (Chelan/Douglas/Okanogan)									
	Elements of Education Partners	Develop <u>Career Launch</u> program to provide classroom learning and paid OJT for Certified Nursing Assistant certification (Pierce)									
P-Tech supported by		Develop Career Connected Technology Information Academy based on IBM's P-Tech High School Program to be scaled aligned to <u>Career Launch</u> (King/Franklin/Snohomish)									

Possible re-submissions for future funding cycles

Round 1 and Round 2 were highly competitive with 14 out of 41 intermediary grantees awarded \$2.8M, out of a total of \$8.3M requested. Organizations listed below include possible re-submissions for future funding cycles.

Organization	County
Washington State University Tri-Cities	Adams, Asotin, Benton, Columbia, Franklin, Garfield, Grant, Klickitat, Walla Walla, Yakima
AYB Drafting	Benton, Franklin
Benton-Franklin WDC	Benton, Franklin
Washington Hospitality Association Education Foundation	Chelan, Clark, King, Pacific, Pierce, Skagit, Spokane, Vancouver, Walla Walla
Eastern Washington University	Clallam, Cowlitz, Grays Harbor, Jefferson, Lewis, Mason, Pacific, Pierce, Skamania, Thurston, Whatcom
Partners in Careers	Clark
Professional Educator Standards Board	Franklin, Grant, King, Pierce, Skagit, Snohomish
Thurston County Chamber	Grays Harbor, Lewis, Mason, Pacific, Thurston
Olympic College	Jefferson, Kitsap, King, Pierce
ANEW	King
Computing for All	King
Cyborg Mobile	King
Seattle Good Business Network	King
Seattle Goodwill Industries	King
Seattle OED	King
YMCA	King
Aerospace Joint Apprenticeship Committee	King, Pierce, Yakima
BERC Group	Lewis
Foundation for Tacoma Schools	Pierce
Mount Vernon Chamber of Commerce	Skagit, Snohomish
Northwest Maritime Center	South King
Project Lead the Way	Spokane
HighSchool.gg	Statewide
Maritime Blue	Statewide