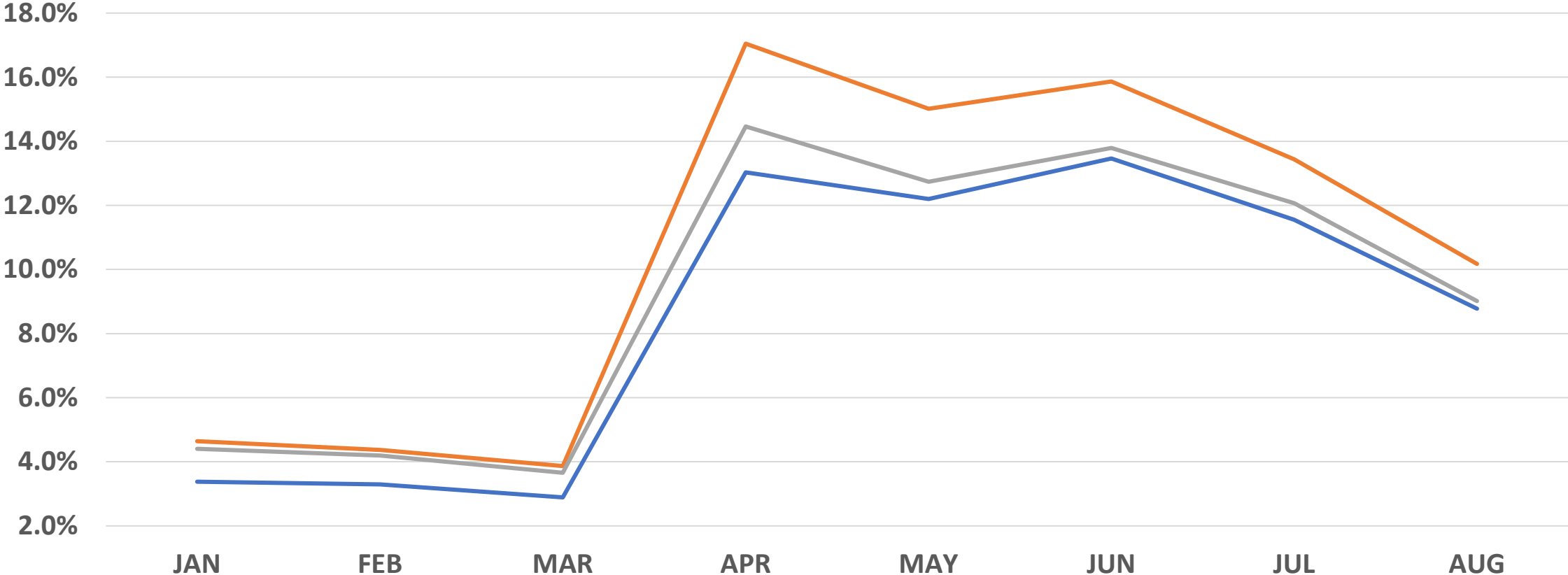


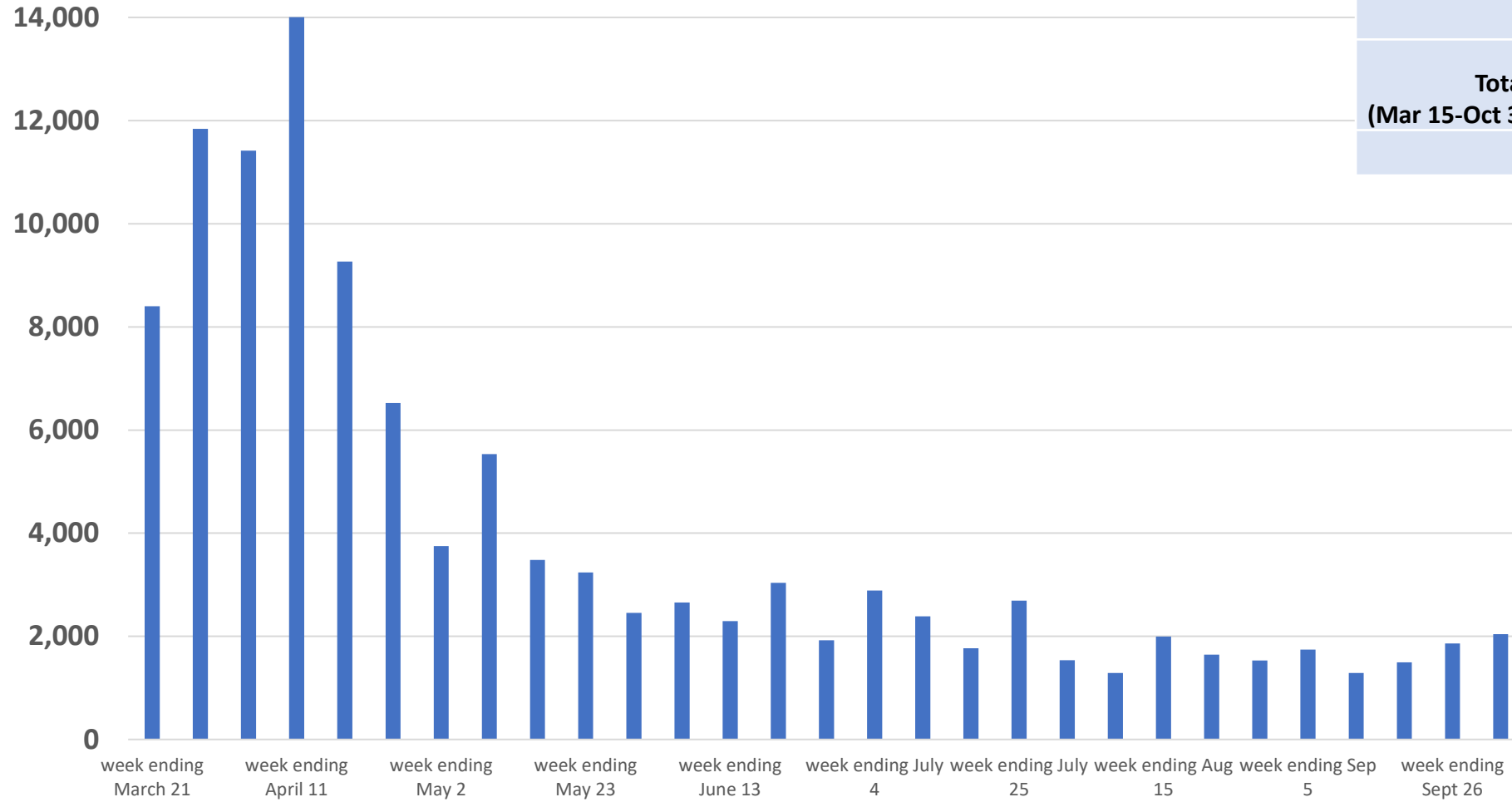
Morris-Sussex-Warren Area
Monthly Unemployment Rate for Each County
2020 through August

August Unemployed 35,300
Morris 22,500
Sussex 7,600
Warren 5,200

— Morris Unemployment Rate (%) — Sussex Unemployment Rate (%) — Warren Unemployment Rate (%)



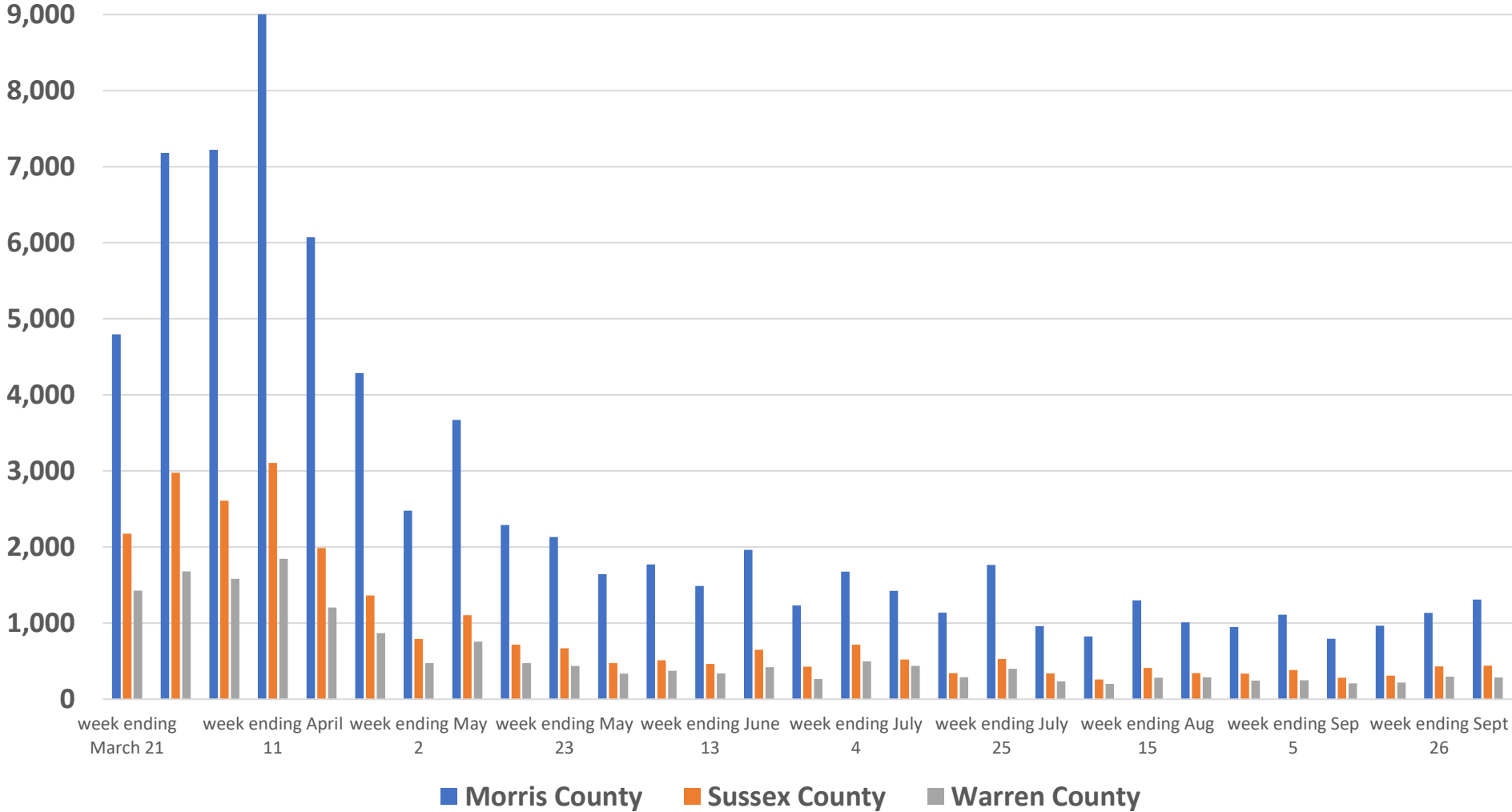
Morris-Sussex-Warren Initial UI Claims March 15 to October 3, 2020



	MSW	Morris County	Sussex County	Warren County
Total (Mar 15-Oct 3)	116,069	73,723	25,697	16,649
		64%	22%	14%

Morris-Sussex-Warren

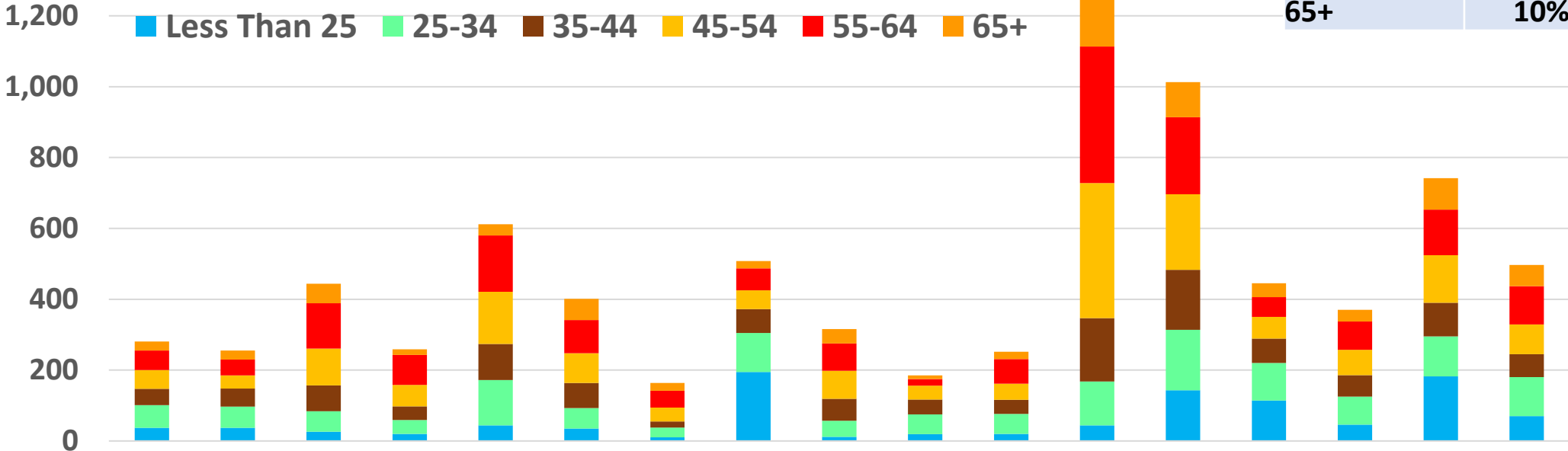
Weekly Initial UI Claims for Each County



Morris-Sussex-Warren Initial UI Claims
 Age Groups within Occupation Groups*
 September 2020: 8,440 Claims

Less Than 25	13%
25-34	18%
35-44	16%
45-54	21%
55-64	23%
65+	10%

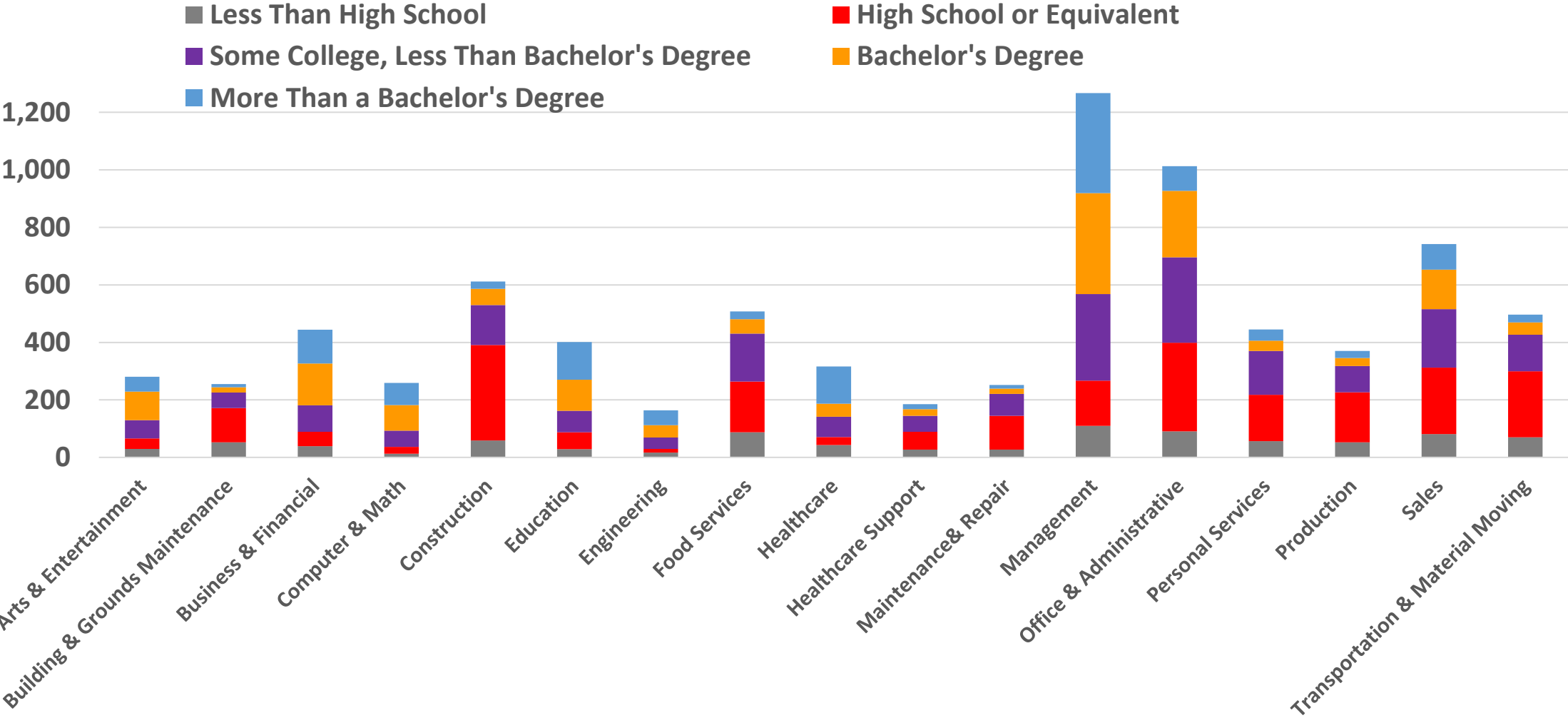
■ Less Than 25 ■ 25-34 ■ 35-44 ■ 45-54 ■ 55-64 ■ 65+



Arts & Entertainment
 Building & Grounds Maintenance
 Business & Financial
 Computer & Math
 Construction
 Education
 Engineering
 Food Services
 Healthcare
 Healthcare Support
 Maintenance & Repair
 Management
 Office & Administrative
 Personal Services
 Production
 Sales
 Transportation & Material Moving

Morris-Sussex-Warren Initial UI Claims
 Education Levels within Occupation Groups*
 September 2020: 8,440 Claims

Less Than High School	11%
High School or Equivalent	28%
Some College < Bachelor's Degree	25%
Bachelor's Degree	19%
More Than a Bachelor's Degree	17%



Morris-Sussex-Warren September 2020
Initial Unemployment Insurance Claims = 8,440

Industry Sectors with Most UI Claims	Industry Sector as pct of total
Chose not to answer (Contractors/Self-Employed)	48.3%
Health Care and Social Assistance	6.0%
Construction	5.2%
Administrative and Support Services	5.0%
Educational Services	4.8%
Retail Trade	4.7%
Professional, Scientific, and Technical Services	4.6%
Manufacturing	4.2%
Accommodation and Food Services	3.3%