



# Guitar Hero<sup>®</sup> Board Identification Charts

## Instructions:

1. Print this guide at 100% (**IMPORTANT**)
2. Verify the scale of your printout is accurate by using a ruler on the top of page 3. One scale is 150 mm long, the second is 6 inches long.
3. Compare your original Guitar Hero PC Board to the images on page 2. Carefully compare how the traces are routed on the board **and** the number, diameter and position of the holes at both sides.
4. If you've got a match, overlay your board on the outline on Page 3. In particular, you need to look at the overall size **AND (VERY IMPORTANT)** the location and diameter of the two mounting holes. Some boards may have the same wiring but have different sized holes.
5. If you are convinced you have a match, place your order at [hobbycnc.com/guitarhero](http://hobbycnc.com/guitarhero)

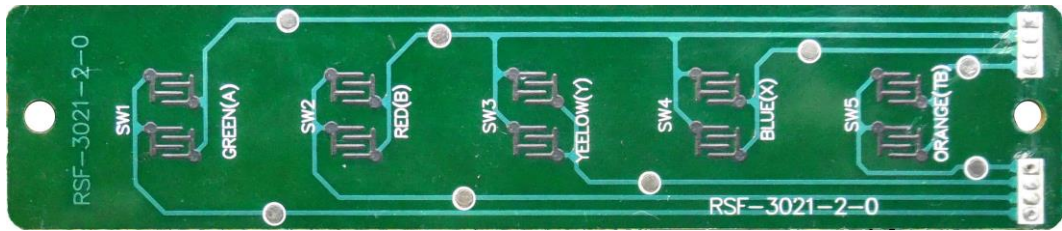
	X-Box 360	PS2	PS3	Wii
Les Paul (GH3)	GH-01		X	GH-03
World Tour	GH-02		X	
Guitar Hero 5	GH-05		GH-05*	GH-04
PS2 SG	GH-06*	GH-06		
Xplorer 360	GH-07	GH-07*		

\* = Not Tested

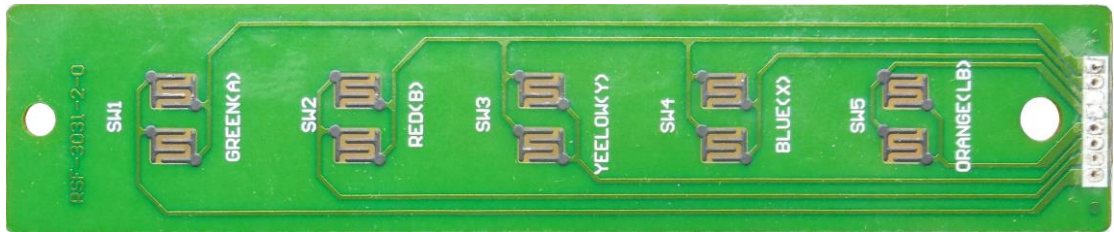
blank = Unknown

x = Not Compatible

Les Paul  
Xbox 360  
GH-01



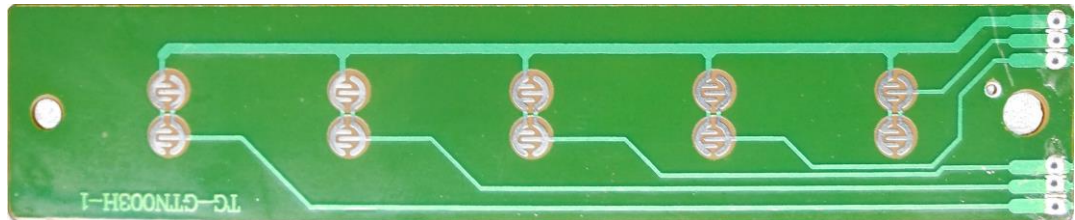
World Tour  
Xbox 360  
GH-02



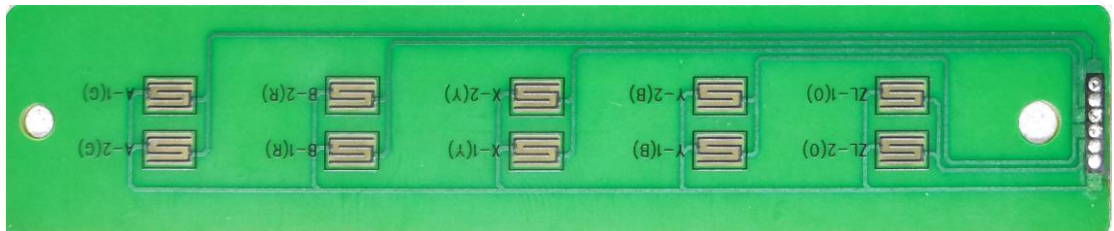
Les Paul  
Wii  
GH-03



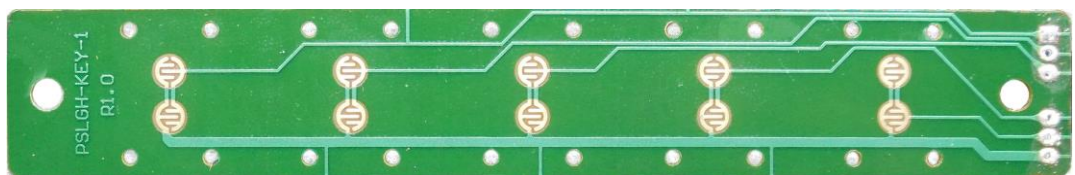
Guitar Hero 5  
Wii  
GH-04



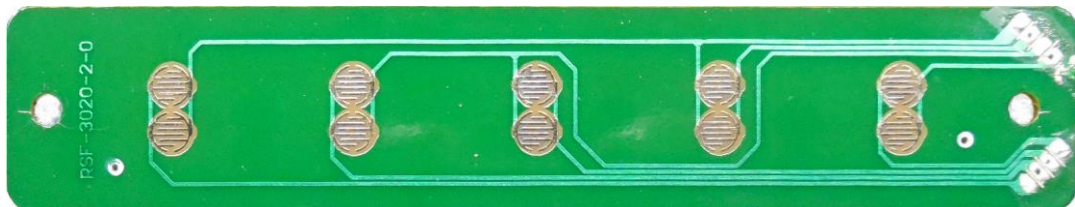
Guitar Hero 5  
Xbox 360  
GH-05



PS2 SG  
PS2  
GH-06



Xplorer  
Xbox 360  
GH-07

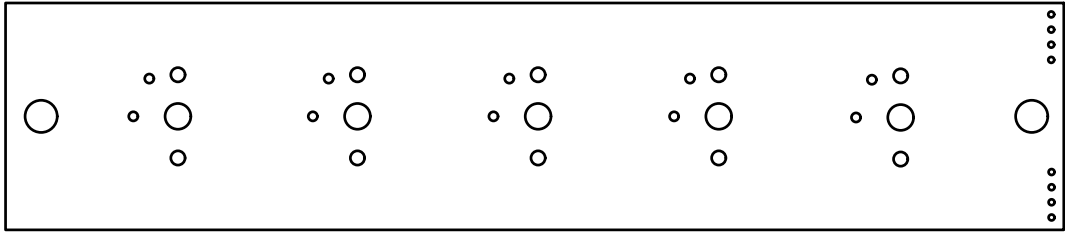


These boards are all copyright and trademarks of their respective companies (NOT HobbyCNC)

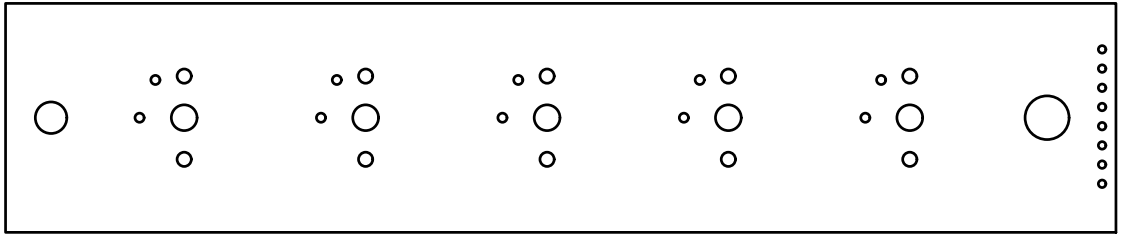
152.4mm  
(6.0 in)

150mm

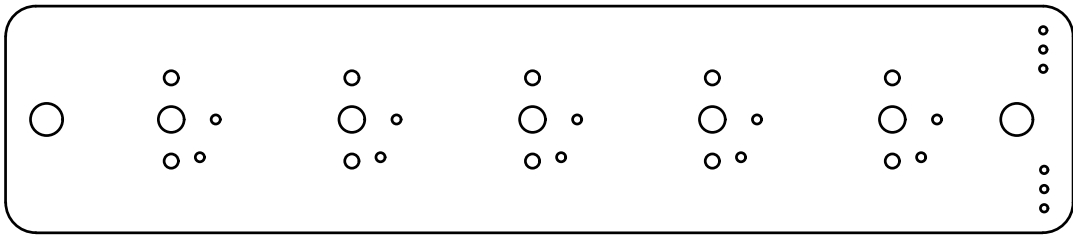
**GH-01**



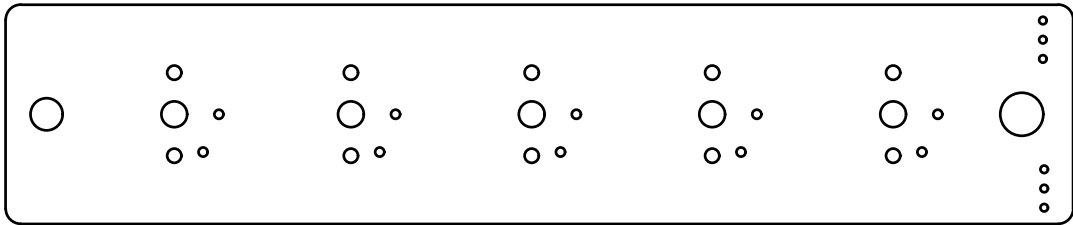
**GH-02**



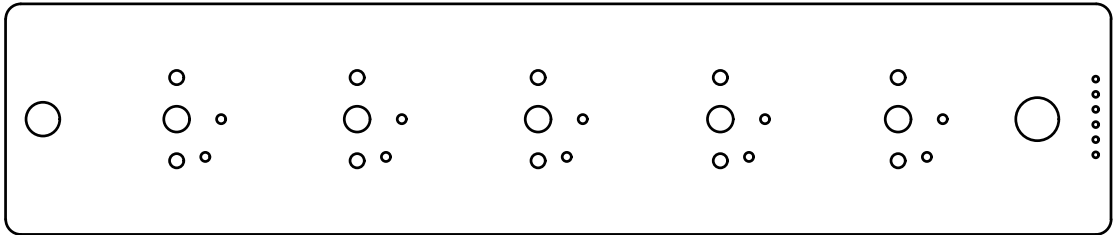
**GH-03**



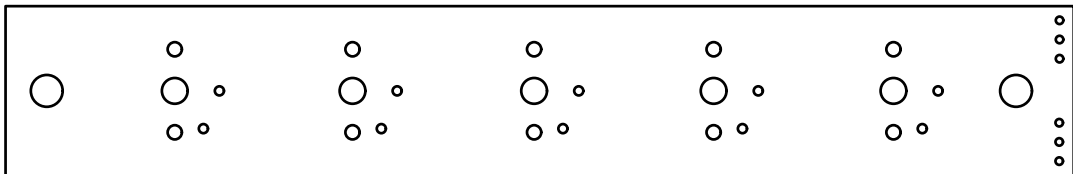
**GH-04**



**GH-05**



**GH-06**



**GH-07**

