

For Patent Information go to <https://goo.gl/2z62aS>

GLXTM 2X PRISM

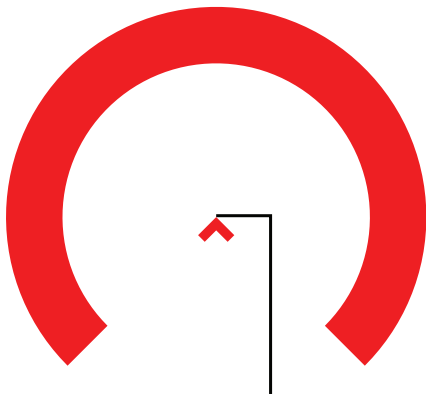
RETICLE MANUAL

ACSS-CQB-M5-5.56/.308/5.45x39

THE ACSS® CQB 5.56/308/5.45 RETICLE

The patented ACSS® CQB 5.56/308/5.45 reticle combines bullet drop compensation with auto ranging and moving target leads to get you on target fast. A center chevron sits above two bullet drop dots, surrounded by a large horseshoe. Horizontal ranging bars are located below the chevron and horseshoe. Illumination is provided in red.

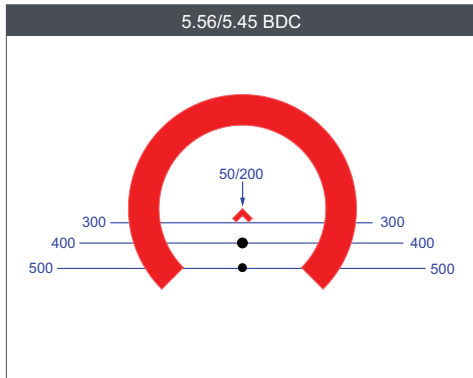
FAST ACQUISITION



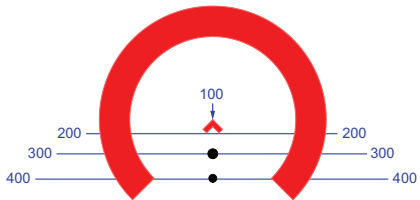
Precision, Aiming Point

BDC

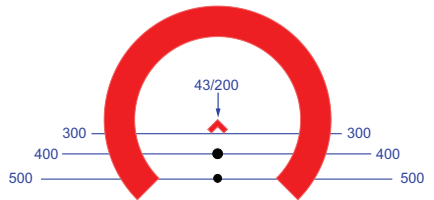
Zero to the tip of the chevron at the range indicated for your caliber. Some calibers use a battle sight zero. For example, if using 5.56 NATO, sight in at 50 yards. Bullet impact will be about an inch high at 100 yards before the bullet falls back down to the tip of the chevron again at 200 yards. Place the target level with the bottom of the chevron for 300 yards, and use the two dots underneath to engage at 400 and 500 yards. At close range, simply place the large horseshoe on target as quickly as possible for quick target acquisition.



6.8 REM SPC/10.5" 5.56 BDC



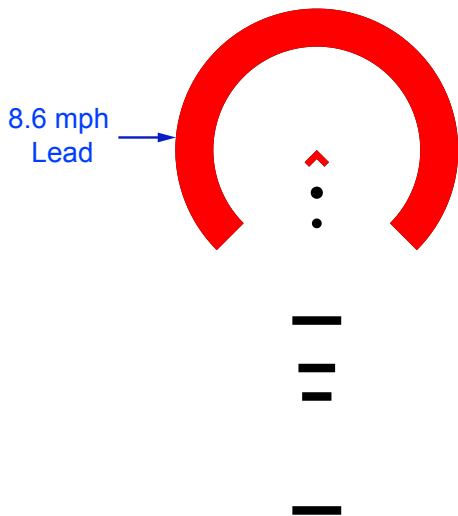
.308/6.5 GRENDEL BDC



LEADING YOUR TARGET

The outer edge of the large horseshoe serves as a lead indicator for targets moving at approximately 8.6 mph. If the target is moving left to right, use the left edge of the horseshoe. If the target is moving right to left, use the right edge. This technique is best used for targets 100 to 300 yards away.

LEADING YOUR TARGET



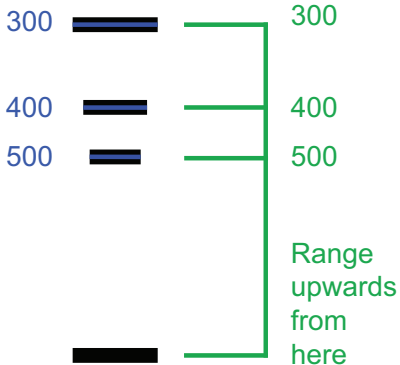
THE RANGING SCALE

The ranging bars underneath the chevron and horseshoe are not aiming points and are not illuminated. Use them to quickly find the range to your target, so you can determine which aiming point to use. They are calibrated for a target approximately 5'10" tall and 18" wide. To range vertically, line up the bottom of the target with the fourth ranging bar, then observe which bar is closest to the target's top. The three top bars denote distances of 300, 400, and 500 yards. The chevron's width will range a 6" diameter target at 200 yards. The first BDC dot will range a 6" diameter target at 400 yards, and the second dot will range a 6" diameter target at 500 yards.

RANGING BARS

Range Center
Mass 18"

Range 5'10"



For more information on these body scopes go to
<http://primaryarmsoptics.com/product-category/prism-scopes/glx-prism-scopes/>



WARRANTY

Your Primary Arms GLx scope is covered by the Primary Arms Lifetime Warranty. If a defect due to materials or workmanship, or even normal wear and tear has caused your product to malfunction, Primary Arms will either repair or replace your product. You can find more details about our lifetime warranty at www.primaryarmsoptics.com.

Email: info@primaryarmsoptics.com

713-344-9600

www.primaryarmsoptics.com