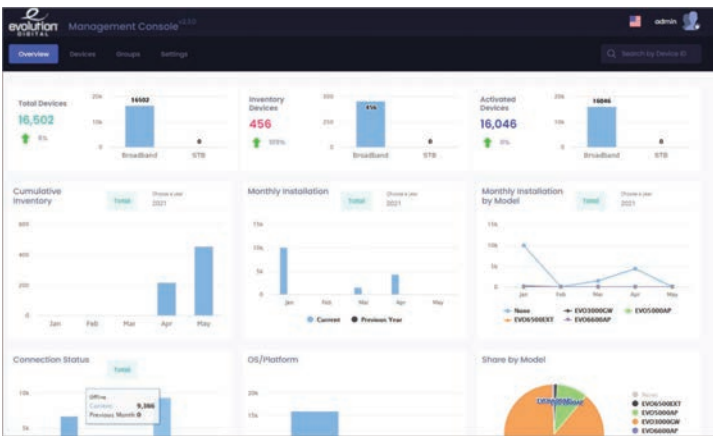




Evolution Digital's Device Manager (eDM) SaaS Wi-Fi management platform includes eDM Broadband, enabling operators to reduce truck rolls and operational costs by remotely managing subscribers' home networks and their respective individual Wi-Fi customer premise equipment. Within eDM Broadband, service provider administrators may:

- Provision SSIDs, mesh parameters and security.
- Troubleshoot and monitor Wi-Fi devices (gateways, routers, mesh beacons and extenders).
- Use analytics for day-to-day operations such as usage, location and real-time alerts.
- Push firmware updates remotely from the platform to Wi-Fi devices.
- Control Wi-Fi devices in the home via power cycle (reboot) and factory reset to default settings.
- Enable the subscriber to operate their network, set-up guest access networks and guest controls.
- Act as a resource to provide feedback as to mesh placement, Wi-Fi RSSI signals on connected devices and how to enhance the network set-up.



KEY FEATURES

Generic

- CWMP (TR-069), SSH, Telnet, HTTP(S), FTP
- APIs available for operator integration
- Zero touch provisioning
- QoS for diagnostics (ping, trace route, speed test)
- Inventory, Firmware Update, Schedule
- Users and roles created by permission(s) to restrict access for non-admins

Management

- SSID/password and security provisioning
- Home network topology and signal strengths, IP addresses, MAC addresses
- WAN, LAN and network statistics including uptime, IPv4/IPv6 addresses, NAT
- Automatic Channel Selection (ACS), spectrum analyzer, channel selection
- Device reboot/factory reset

Diagnostics

- Device logs
- CPU / memory usage by device
- Real-time Alarms across operator device population
- Connection status
- WAN, LAN, 2.5/5GHz bytes/packets received and transmitted



Auto Provisioning



Device Information & Status



Performance Tracking



Device Management



Event Alarming



Firmware Management

**CONTACT EVOLUTION DIGITAL FOR MORE INFO:
800.315.2253 | evolutiondigital.com**

