

# LISA WATERPROOF

/ armchair Design Marcello Ziliani

**furniture**designhouse®



2860 ZE WP 88



2860 ZP WP 87



**archiproducts**  
DESIGN AWARDS  
—  
WINNER 2018



AS AWARDED BY THE CHICAGO  
ATHENAEUM: MUSEUM OF  
ARCHITECTURE AND DESIGN

## FINITURA TELAIO FRAME FINISHING

## TESSUTI E COLORI FABRICS AND COLOURS

### TESSUTO WATERPROOF WATERPROOF FABRIC



**ZE**

verniciato terracotta  
terracotta coated

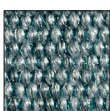


**WP 88**



**ZO**

verniciato avio  
air-force blue coated

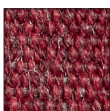


**WP 86**



**ZP**

verniciato rosa antico  
antique pink coated

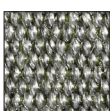


**WP 87**



**ZV**

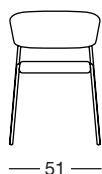
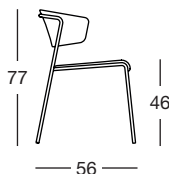
verniciato verde oliva  
olive green coated



**WP 89**

Seat and back: upholstered. 4-leg frame in 16 mm diam. galvanized and coated tubular steel. Thanks to its large and embracing backrest, you can lean armchair Lisa on the table. Stackable. For indoor/outdoor use.

**CUSTOMER OWN FABRIC =**  
ask for the minimum order quantity.  
All options available at "fabrics" section.  
Non-standard options to be verified.



3 pz



4 pz

Art. 2860

Imballo Packing	1 pezzo 1 piece
Peso unitario Unit weight	Kg 6,400
Misure imballo Packing sizes	57x53x80 cm

**CATAS**

Conforme EN 16139: 2013  
Compliant with EN 16139: 2013

made in Italy

**SCAB** DESIGN  
since 1957

Imported & Distributed in the Americas by:  
Furniture Designhouse | Hohokus, NJ 07423 - USA | +1-201-689-9422  
sales@furnituredesignhouse.com | furnituredesignhouse.com