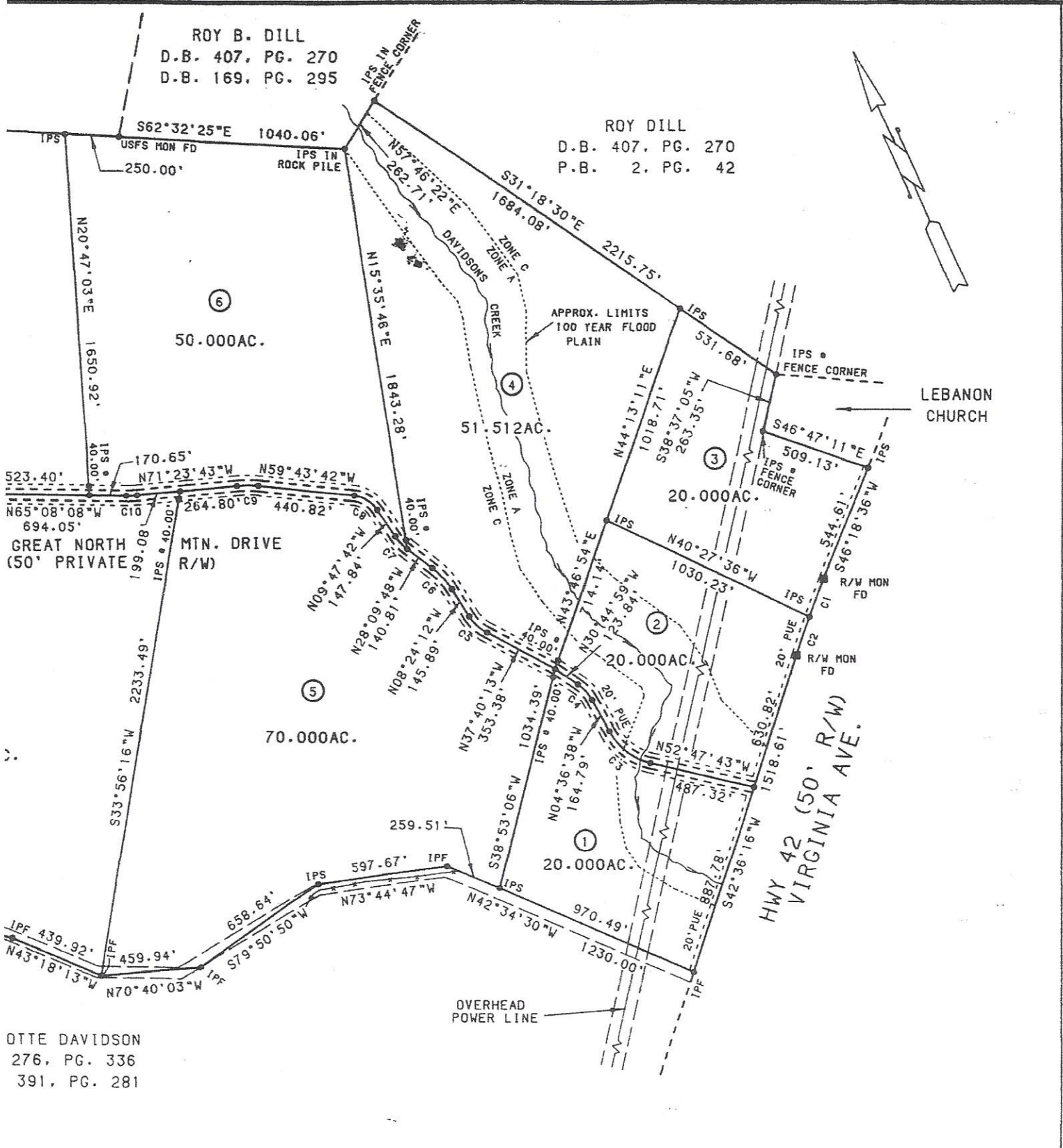


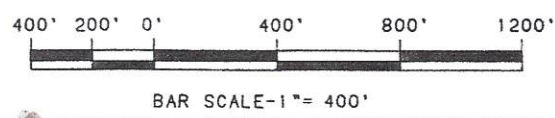
ROY B. DILL  
D.B. 407, PG. 270  
D.B. 169, PG. 295

ROY DILL  
D.B. 407, PG. 270  
P.B. 2, PG. 42



OTTE DAVIDSON  
276, PG. 336  
391, PG. 281

SOURCE OF TITLE  
DEED BOOK 276, PAGE 336  
DEED BOOK 391, PAGE 281



<b>BERKLEY HOWELL &amp; ASSOC., P.C.</b> ENGINEERS SURVEYORS PLANNERS LYNCHBURG, VA. SMITH MTN. LAKE		PLAT OF SURVEY OF <b>GREAT NORTH MOUNTAIN</b> <b>FOR: TIMBERLINE CORPORATION</b> WALKERS CREEK DISTRICT, ROCKBRIDGE COUNTY, VA	
SCALE: 1" = 400'	DATE: NOVEMBER 20, 1996	COMM. NO. 96585	F.B. REF. 96-6
T.M. #88-A-44.45		"sub1"	SHEET 2 OF 3