



wahaso™

WATER HARVESTING SOLUTIONS

Custom Water Harvesting System Controls from Wahaso

Wahaso engineers, builds and programs custom control packages that monitor, control, track and report every operation in all our water harvesting systems.

Our panels are customized for each project to match the unique system requirements. Proprietary software optimizes the user interface and reporting to keep customers informed of system status and statistics.



System Features

Wahaso control systems include a Unitronics PLC, touch screen interface, NEMA 12, 3R or 4X rated enclosure and custom programming. Interface with the Building Automation System is available via Modbus or BACnet.

All control systems also include:

- U.L. listing
- Industry-standard electrical components
- Quick-connection cables to simplify installation



ISOLATION RELAYS

Protect the PLC from damage on device power up surges and faults.



OPTIONAL BACK UP POWER SUPPLY

Allows default positioning and controlled switching on power failure.



VARIABLE FREQUENCY DRIVES

Enhances pump performance and saves energy. Output pump pressure (PSI) is set on touch screen.



wahaso™

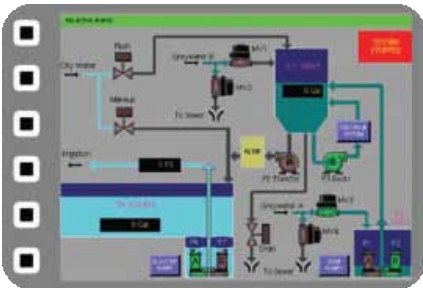
WATER HARVESTING SOLUTIONS

Custom Software Manages All System Activity

Wahaso's proprietary software is customized for each client application to ensure safe, efficient and reliable operation of the water harvesting system.

- Designed to deliver fully automatic operation of the entire system.
- User-friendly access to key information via the included touch screen or other interfaces.

- System alarms and alerts prominently displayed on the top of each screen.
- Operations data-logged to record and report system statistics on water savings, rain events, municipal water usage and more.
- Optional educational package offers data displays for students or the public to explain system operation and report water savings.



Main Screen

Allows users to view in real time all key parameters of the system including tank levels, pump pressures, valve positions, pump activity, chlorine levels and many other key operational conditions.



Manual Mode Screen

Manual Mode allows the operator to cycle all pumps and valves for testing purposes to verify proper operation.



Set-Up Screen

Set Up Screens allows authorized service technician to set all key parameters of the system including pump on/off points, alarm points, and all other system specific settings.

Multiple Ways to Access Key Data

Change settings, view alarms, retrieve harvesting data and view operational conditions in real time from the panel mounted touch screen or remotely via a secure internal network.

Wahaso's Control System allows authorized users to manage the system locally or remotely. Wahaso control systems will interface with most building automation system protocols. BACNET™ and MODBUS™ are standard for Wahaso systems. The Wahaso 100 series controllers can be optionally upgraded to a 12" color screen.

	WCS-100-07	WCS-100-04	WCS-200-04	WCS-300-01
Screen Size	7"	4.3"	4.3"	1.2"
Touch Screen Interface	Color	Color	Color	Monochrome
Standard Bas Interface	BACnet™	BACnet™	MODBUS™	None
Datalogging	Yes	Yes	Yes	No
Panel Power	208/230/460V, 3-Phase			115 VAC 1 or 3-Phase