

THERMOER™ CHOOSE THE MOST REASONABLE AND RELIABLE HEATING MATERIAL FOR YOU ACCORDING TO THE WORKING TEMPERATURE USED. WHETHER IT IS A STRAIGHT LINE, U, W, OR A SQUARE, WE CAN PRODUCE IT. OF COURSE, THE CUSTOMER CAN DELIVER THE DRAWINGS TO US.



Design & Notes

- ① Is the heating element built-in dry burning or bare air dry burning ?
- ② Is there a wind cycle when the naked air is dry burning ?
- ③ Working environment and working temperature ?
- ④ the size of the installation space ?

Material selection

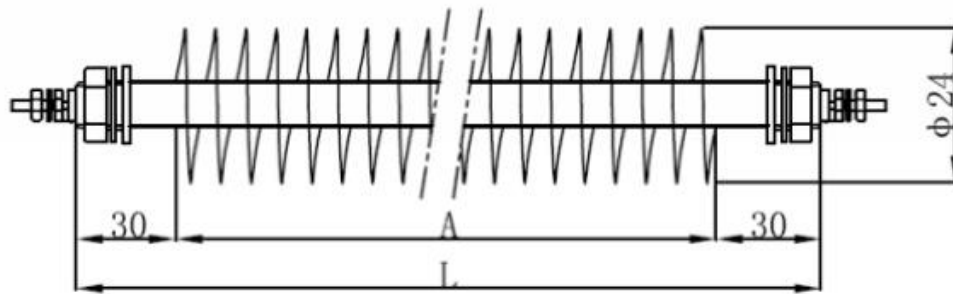
Material	Surface load	Heating medium
Stainless steel 304, 321, 316L	5W/cm ²	Still air
Stainless steel 304, 321, 316L	5.5W/cm ²	Wind speed > 6m / s
Stainless steel 310S, Incoloy 840, 800	10W/cm ²	Still air
Stainless steel 310S, Incoloy 840, 800	11W/cm ²	Wind speed > 6m / s

Finned tubular heating element belongs to Air Heaters, which is often used in air heating equipment such as oven, ducts, autoclaves and so on.

Thermoer™ choose the most reasonable and reliable heating material for you according to the working temperature used. Whether it is a straight line, U, W, or a square, we can produce it. Of course, the customer can deliver the drawings to us.

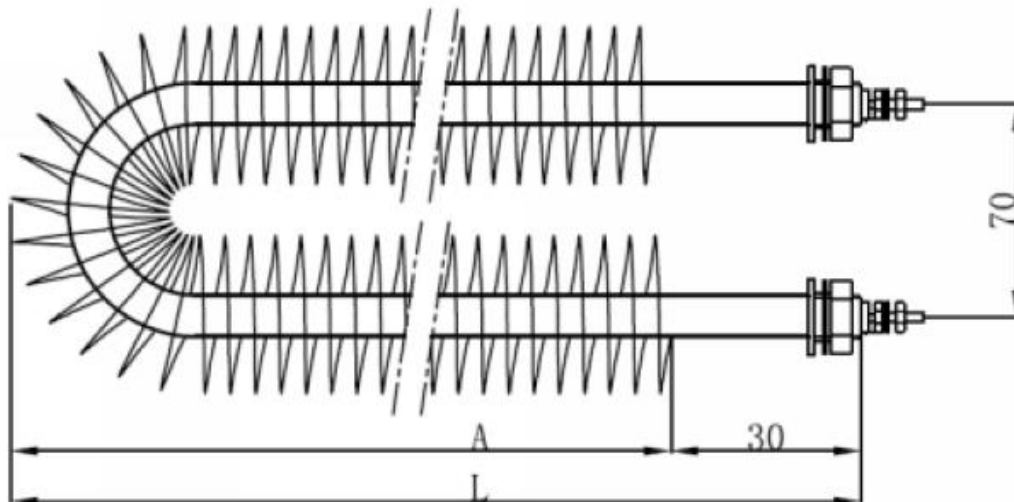
[Finned Tubular Heaters | Thermoer](#)

Straight Line Finned Tubular Heating Element



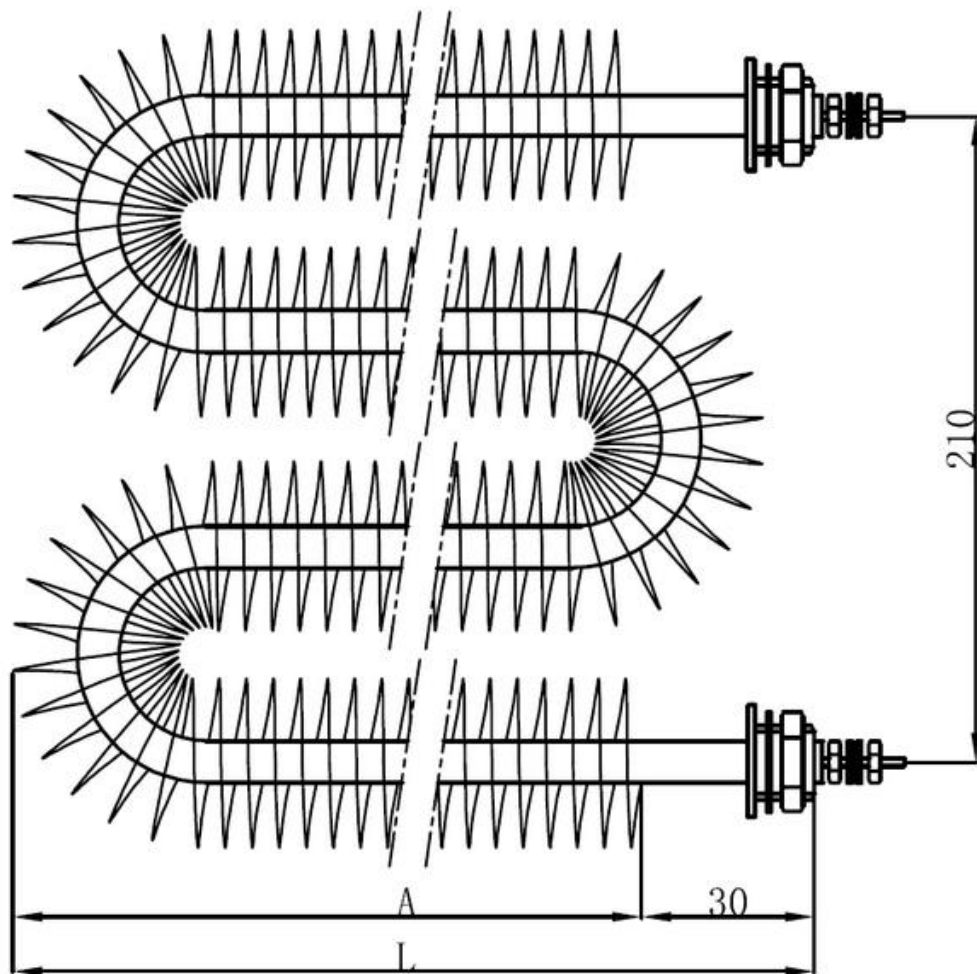
Power	L length	A fin length	Fastener
500	500	440	M18 * 1.5
700	700	640	M18 * 1.5
800	800	740	M18 * 1.5
1000	1000	940	M18 * 1.5
1200	1200	1140	M18 * 1.5
1500	1500	1440	M18 * 1.5

U Finned Tubular Heating Element



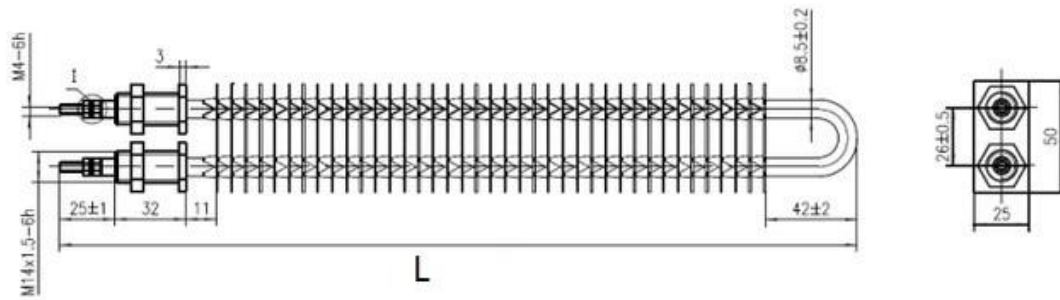
Power	L length	A fin length	Fastener
500	200	170	M18 * 1.5
1000	450	420	M18 * 1.5
1500	700	670	M18 * 1.5
2000	950	920	M18 * 1.5
2500	1200	1170	M18 * 1.5
3000	1500	1470	M18 * 1.5

W Finned Tubular Heating Element



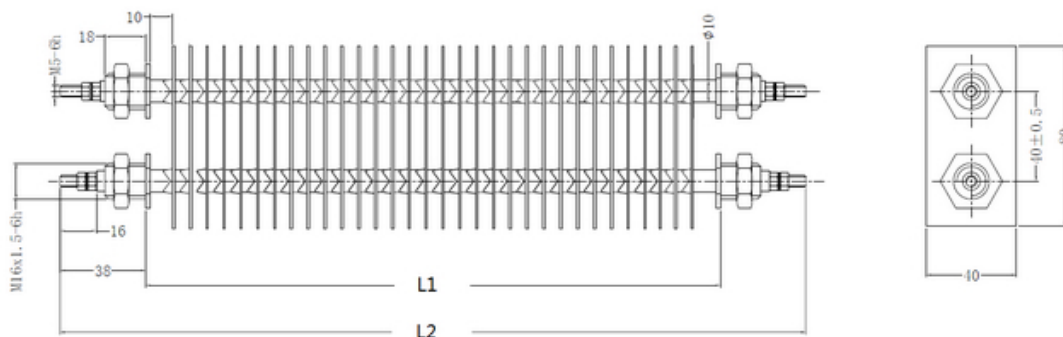
Power	L length	A fin length	Fastener
2000	500	470	M18 * 1.5
2500	625	595	M18 * 1.5
3000	750	720	M18 * 1.5
3500	875	845	M18 * 1.5
4000	1000	970	M18 * 1.5
4500	1125	1095	M18 * 1.5

25 * 50 Square Fins



Power	L	Fastener
200	140	M14 * 1.5
500	250	M14 * 1.5
750	350	M14 * 1.5
1000	450	M14 * 1.5
1500	650	M14 * 1.5
2000	850	M14 * 1.5
3000	1300	M14 * 1.5

40 * 80 Square Fins



Power	L	Fastener
1000	400	M16 * 1.5
1500	600	M16 * 1.5
2000	750	M16 * 1.5
2500	1100	M16 * 1.5
3000	1200	M16 * 1.5
3500	1500	M16 * 1.5