

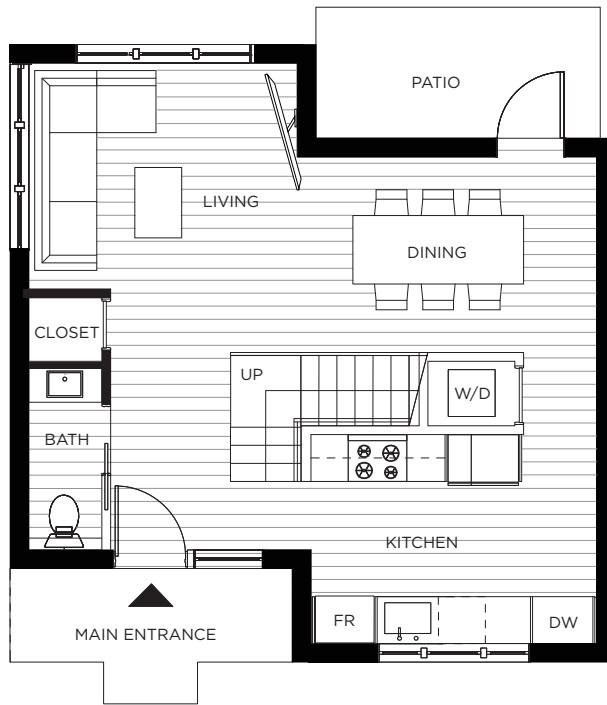


# 4415 WELWYN

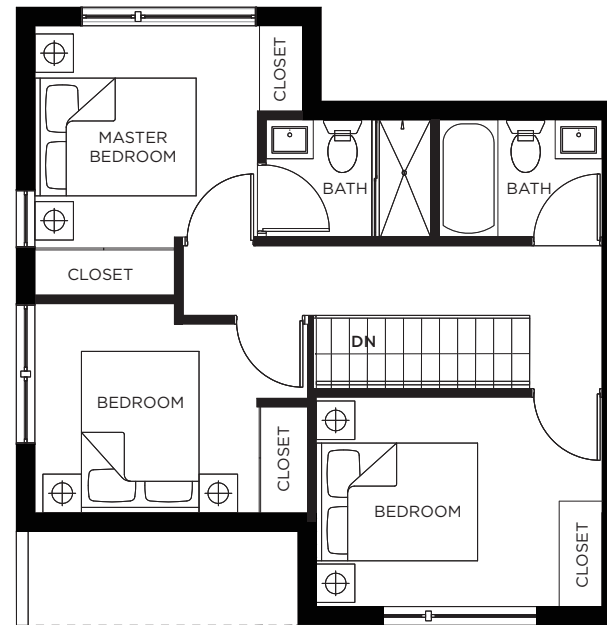
UNIT 1 | BUILDING 1

## 3 Bedroom + 2.5 Bathroom

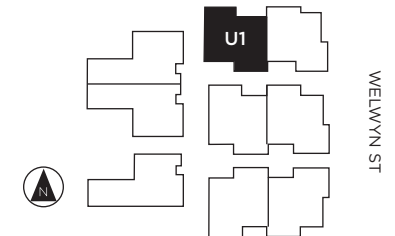
LIVING: 1148 SQ FT | OUTDOOR : 116 SQ FT



MAIN FLOOR: 574 SQ FT



SECOND FLOOR: 574 SQ FT



Dimensions, square footage, and floorplans are approximate only. Final dimensions, square footage, and floorplans may vary and will be determined by final strata plan measurements. Final floorplans may be a mirror image of the floorplans shown above. The Developer reserves the right to make changes to the floorplans, project design, appliance, specifications, and features. E.&O.E.

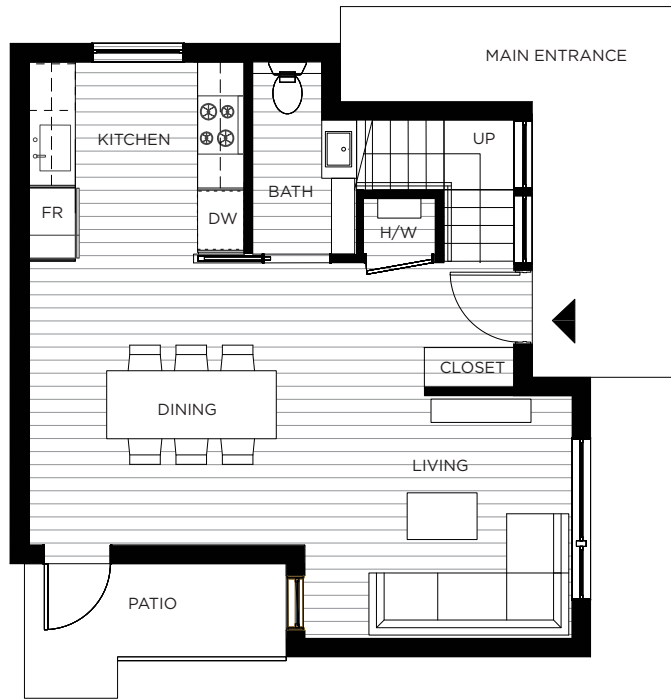


# 4413 WELWYN

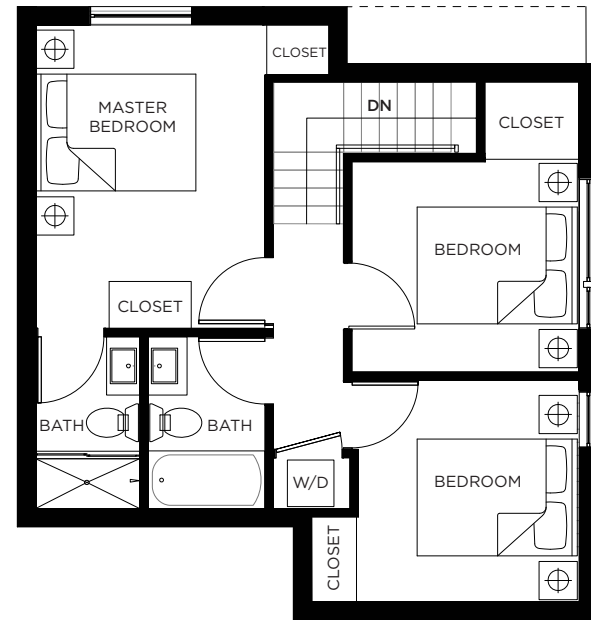
UNIT 2 | BUILDING 1

## 3 Bedroom + 2.5 Bathroom

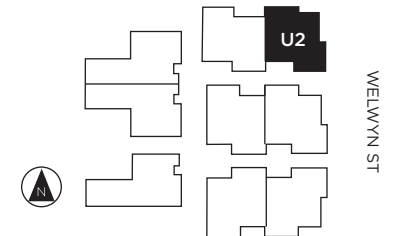
LIVING: 1123 SQ FT | OUTDOOR : 185 SQ FT



MAIN FLOOR: 547 SQ FT



SECOND FLOOR: 577 SQ FT



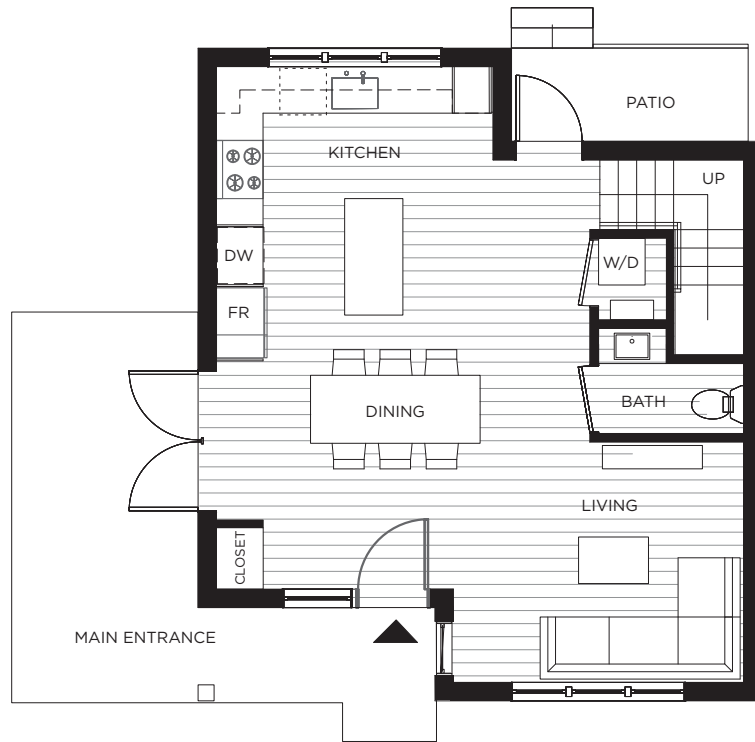


# 4423 WELWYN

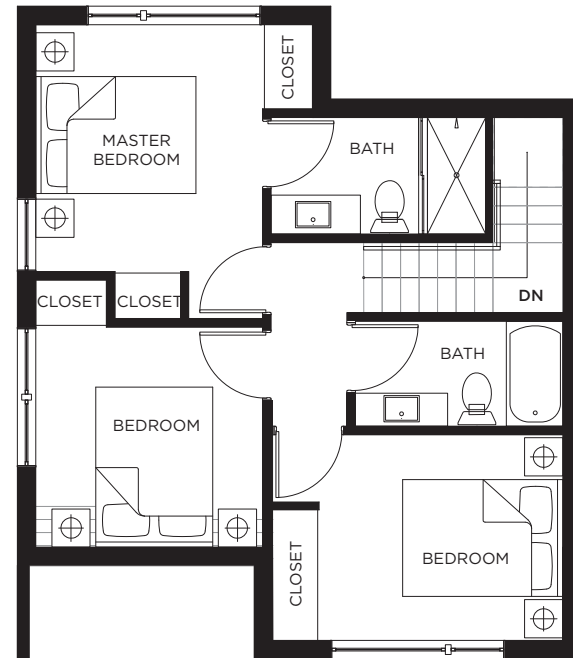
UNIT 3 | BUILDING 2

## 3 Bedroom + 2.5 Bathroom

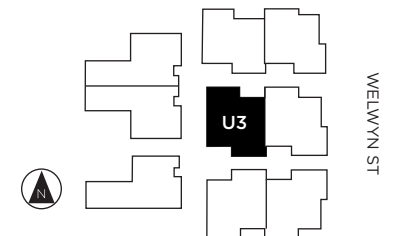
LIVING: 1178 SQ FT | OUTDOOR : 216 SQ FT



MAIN FLOOR: 588 SQ FT



SECOND FLOOR: 589 SQ FT





# 4421 WELWYN

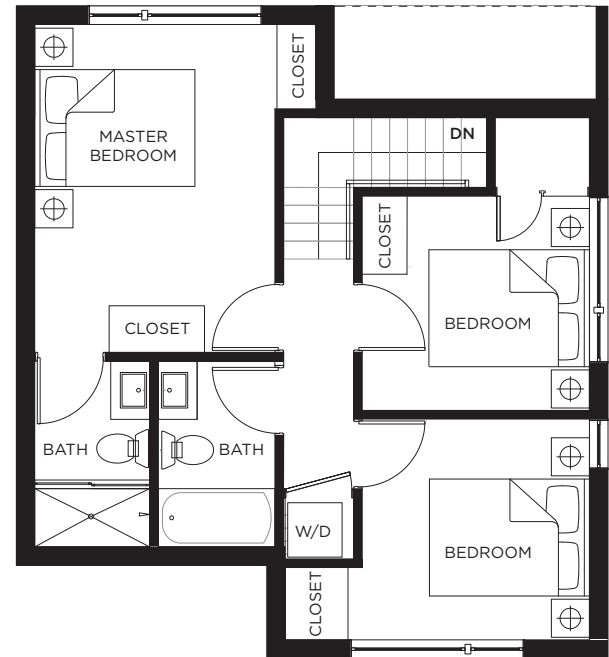
UNIT 4 | BUILDING 2

## 3 Bedroom + 2.5 Bathroom

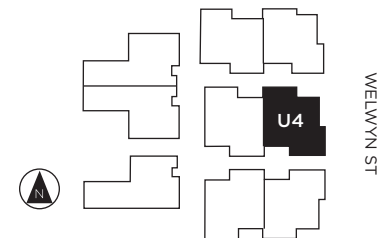
LIVING: 1201 SQ FT | OUTDOOR : 183 SQ FT



MAIN FLOOR: 586 SQ FT



SECOND FLOOR: 615 SQ FT



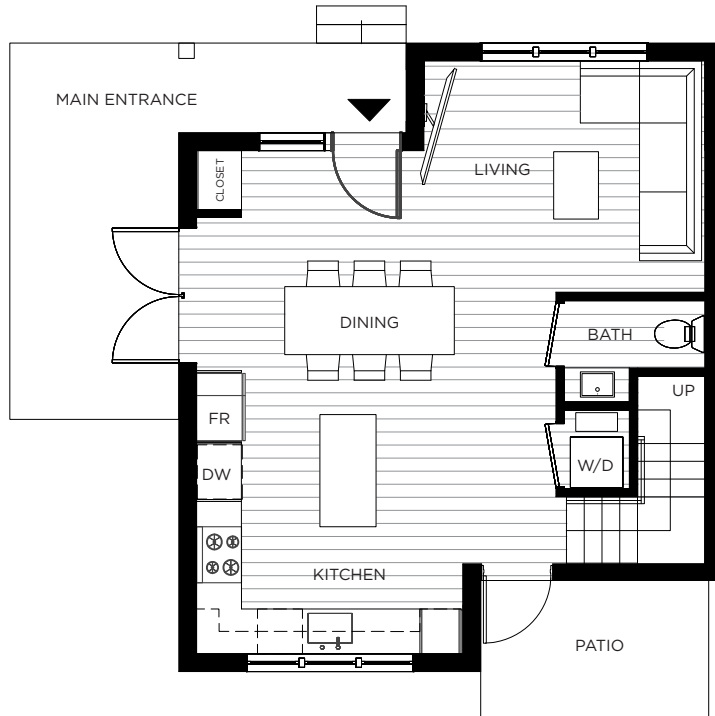


# 4427 WELWYN

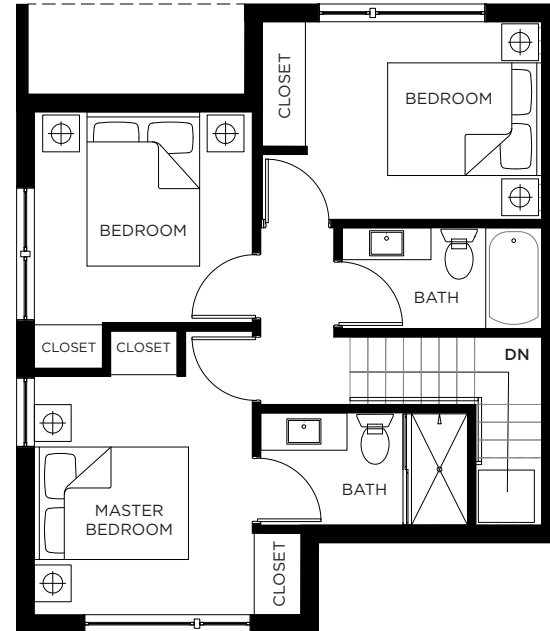
UNIT 5 | BUILDING 3

## 3 Bedroom + 2.5 Bathroom

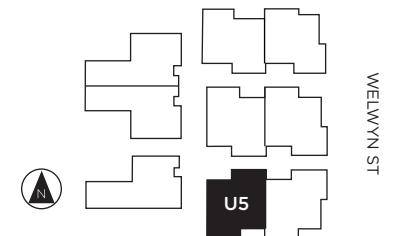
LIVING: 1178 SQ FT | OUTDOOR : 231 SQ FT



MAIN FLOOR: 588 SQ FT



SECOND FLOOR: 589 SQ FT



Dimensions, square footage, and floorplans are approximate only. Final dimensions, square footage, and floorplans may vary and will be determined by final strata plan measurements. Final floorplans may be a mirror image of the floorplans shown above. The Developer reserves the right to make changes to the floorplans, project design, appliance, specifications, and features. E.&O.E.



# 4429 WELWYN

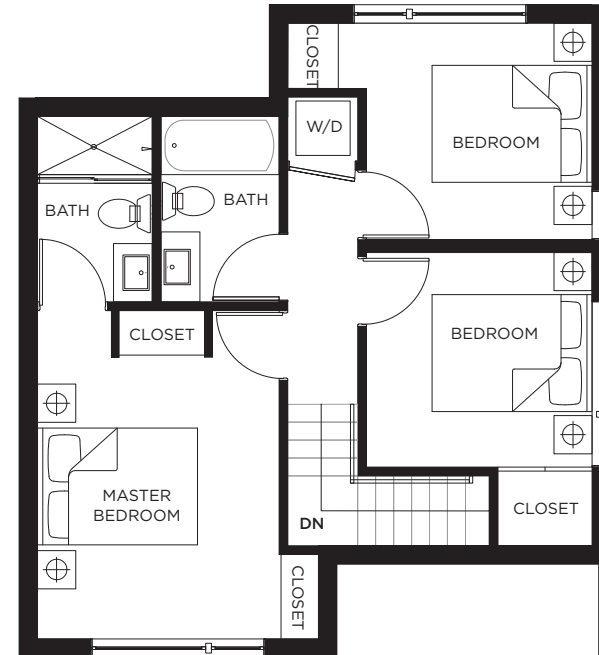
UNIT 6 | BUILDING 3

## 3 Bedroom + 2.5 Bathroom

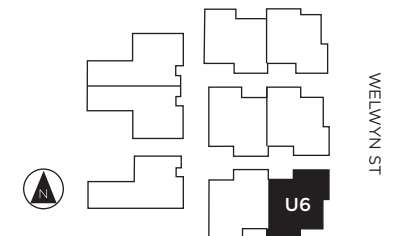
LIVING: 1201 SQ FT | OUTDOOR : 203 SQ FT



MAIN FLOOR: 586 SQ FT



SECOND FLOOR: 615 SQ FT



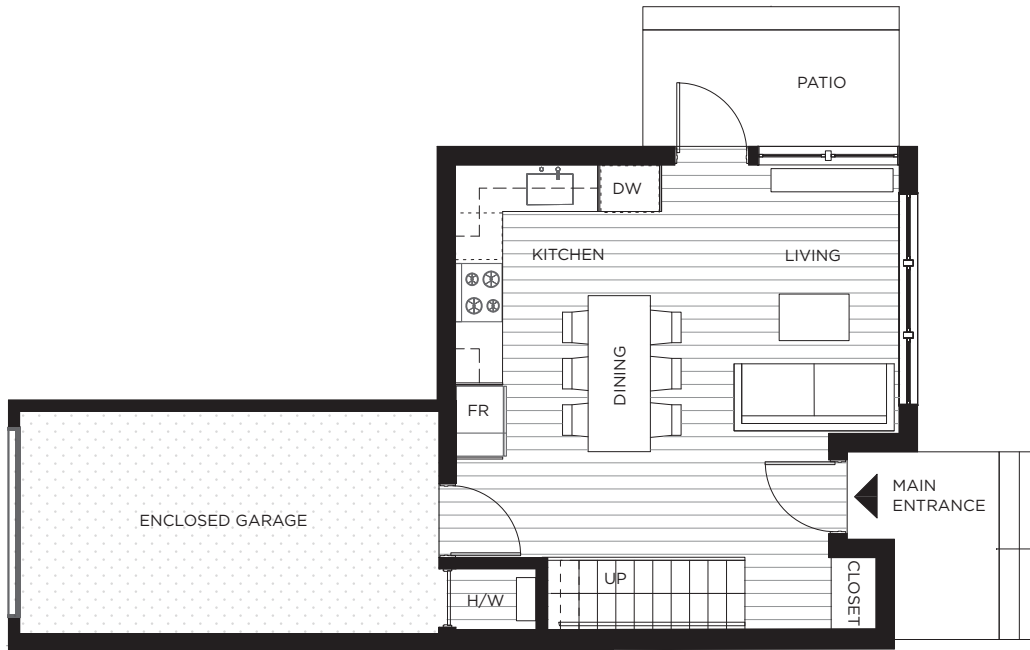


# 4417 WELWYN

UNIT 7 | BUILDING 4

## 3 Bedroom + 2 Bathroom

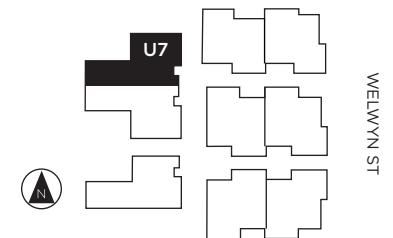
LIVING: 1059 SQ FT | OUTDOOR : 181 SQ FT



MAIN FLOOR: 420 SQ FT



SECOND FLOOR: 638 SQ FT



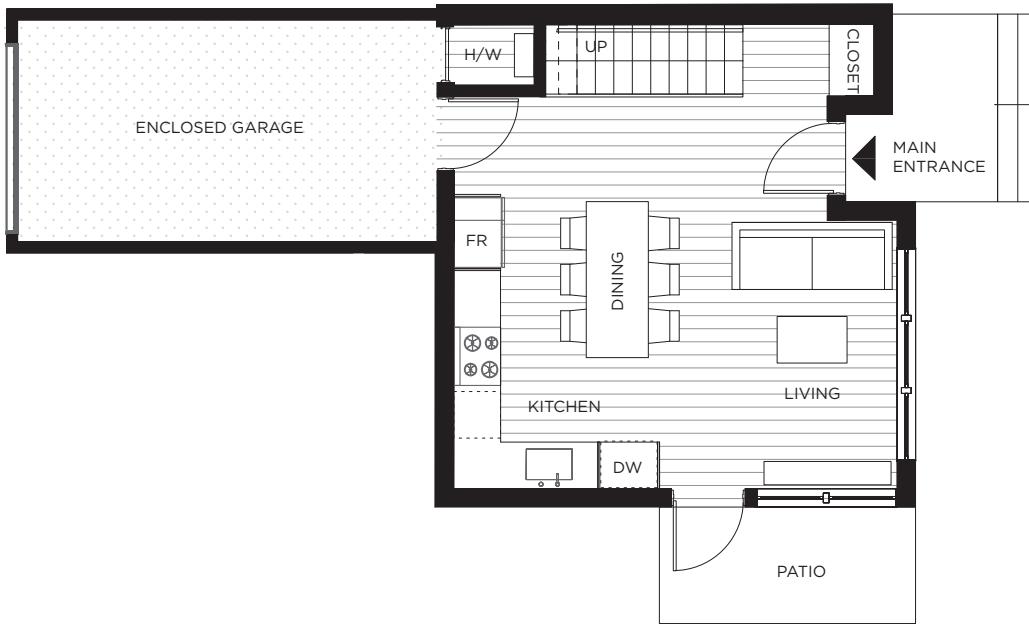


# 4419 WELWYN

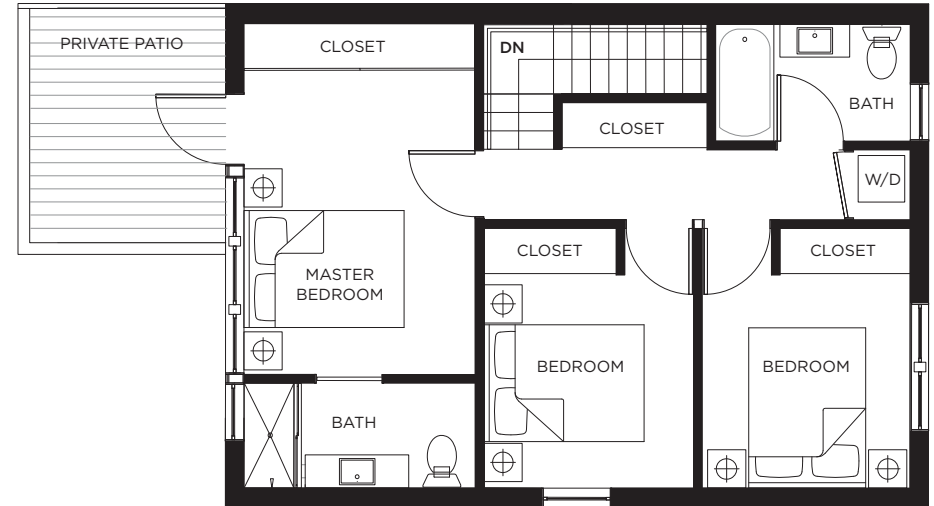
UNIT 8 | BUILDING 4

## 3 Bedroom + 2 Bathroom

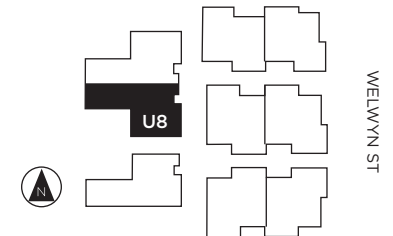
LIVING: 1059 SQ FT | OUTDOOR : 181 SQ FT



MAIN FLOOR: 420 SQ FT



SECOND FLOOR: 638 SQ FT





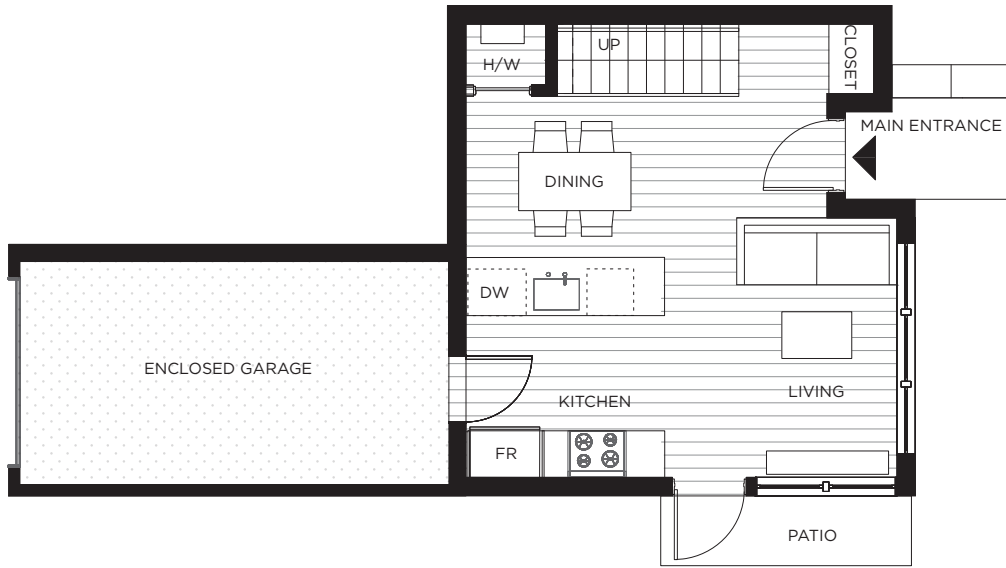


# 4425 WELWYN

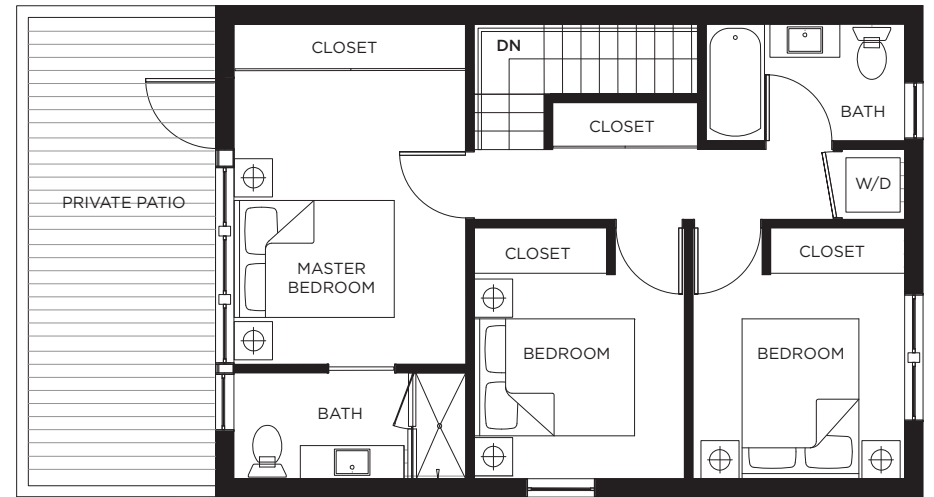
UNIT 9 | BUILDING 5

## 3 Bedroom + 2 Bathroom

LIVING: 1064 SQ FT | OUTDOOR : 192 SQ FT



MAIN FLOOR: 422 SQ FT



SECOND FLOOR: 642 SQ FT

