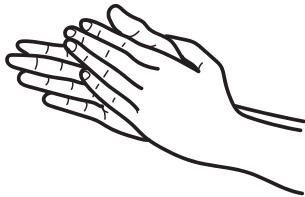


Detecting diffuser-produced tequila



1 Start with a suspected diffuser tequila, so the aromatics of a traditional tequila don't influence the neutralized spirit. Pour a splash of tequila into your palms.



2 Rub your palms together until the tequila is mostly evaporated.

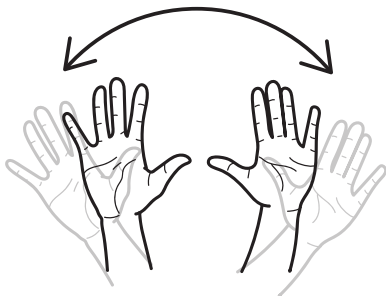


3 Cup your hands around your nose and gently inhale.

Notice:

DIFFUSER Clean, sterile, odorless.

TRADITIONAL Aromas of baked yam, wet earth, cooked agave.



4 Air-dry your hands completely between sampling different tequilas.

Flavor and aroma additives in diffuser tequila can deceive on your initial inhalation, but mostly disappear when it evaporates. Traditional tequila's aromas remain and its character dissipates slowly.