

### #13 - 1941 Steel Drawn Case model

Late in 1941, Zippo made a steel cased lighter with a four barrel hinge and a brushed finish. This model was produced in the same way as numbers 11 and 12, with exception that the case is made of steel and can be identified using a magnet. The insert for this model was first fabricated in brass and then steel. Steel inserts, for this model, are extremely rare. Both inserts, for this model, are identical in design to those fabricated circa 1937-40. Therefore there is no seam, in the fluid chamber, under the cam.

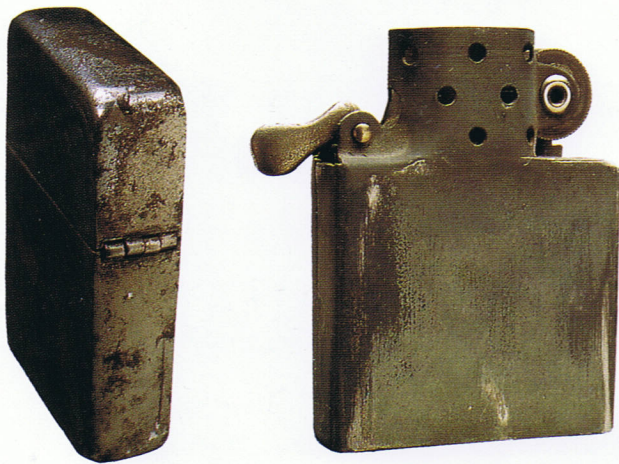
#13 A - Plain

#13 B - Engraved Generic Advertising

#13 B1 - "Lion and Latin Logo"

### #14 - 1942 BLACK CRACKLE

The 1942 black crackle is known as the first World War II model. This was also the first year of the black crackle finish. The 1942 model was similar in design to the 1940-41 model with the exception that it was made of steel, instead of drawn brass. The insert, as well as the case, was made of steel and not brass. This model had a four barrel hinge similar to previous models produced from 1936-41. The steel composing the insert was wrapped opposite that of other inserts. The insert originally had luster. The 1942 model doesn't have any Zippo logo on the insert. The flint wheel has horizontal cuts on it. The chimney has seven holes on each side with sharp vertical sides.



#13 B1, \$225-\$300

In 1942 Zippo produced an irregular model with a #203695 patent number. This patent number lacks the number 2 between the numbers 3 and 6. It was only produced in 1942. The black crackle paint has to wear off on the bottom of the lighter to identify this model. These 1942 models can be found having military insignias, engraved initials, and engraved Sports motifs, which were produced by Zippo.

#14 A - Plain or with Engraved Initials

#14 B - Engraved facsimile signature done by Zippo

#14 C - Irregular model, with pat. #203695 (missing the #2 in pat. number)

#14 D - Metal Emblems (insignias) done by Zippo

#14 E - Pipe Smoking Fisherman (see #17 I)

#14 F - "Trench art" Military Emblems

#14 G - Engraved Crossed Guns

#14 H - Engraved Generic Advertising

#14 H1 - Curtiss/Wright Logo

#14 H2 - "Bubbles" Logo (This lighter belonged to "Bubbles" LaRue Hutton, the niece of Dale Hutton who was a long time Zippo employee. Note that the word "Bubbles" has gold inlay.)