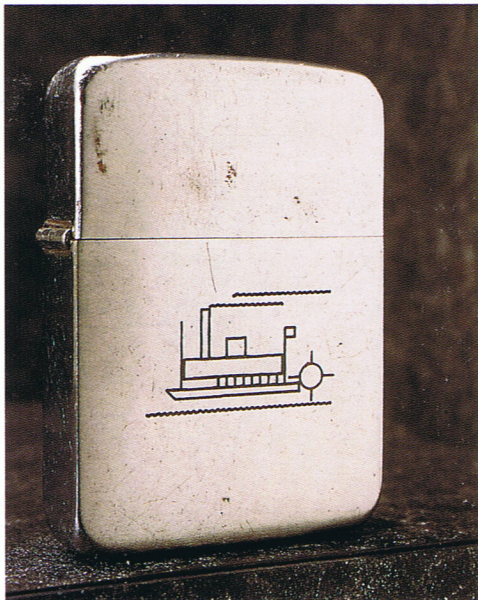
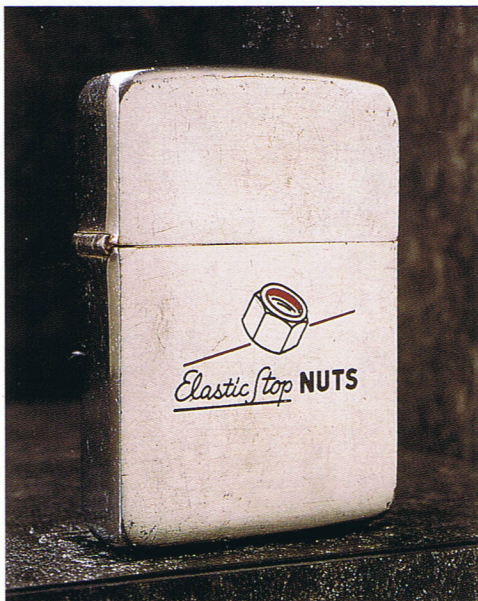




#11 C1, \$400-450



#11 C2, \$400-\$450



#11 C3, obverse, \$450-\$500

### #11 - 1940-41 model

This model has no diagonal lines cut on the face of the lighter. It is different from the previous two models in that it lacks the two soldered clips. The cam stop is actually an extension of the hinge that extended into the lid and curled back around to supplant the U-shaped clips. This is the first model that Zippo produced in this way. Zippo still produces the cam stop in this way.

#11 A - Plain

#11 B - Metallique Initials

#11 C - Engraved Generic Advertising

#11 C1 - National Products Advertiser

#11 C2 - Delta Queen

#11 C3 - Elastic Stop Nuts (Rare to find this model with advertising on both sides.)

#11 C4 - American Roller Bearing

#11 C5 - KEROTEST

#11 C6 - YALE

#11 C7 - INSELBRIC

#11 C8 - ZIMMER SPLINT COMPANY

#11 C9 - FRASSE STEELS

#11 D - Generic Metallique Advertising

#11 E - Sterling Silver Model (may or may not have initial plate)

#11 F - 14k Gold Model

#11 G - Belle Kogan Series Designs (Zippo model #'s K1, K2, K5, & K7; with black enamel inlay)  
\*See 1938 Esquire Advertisement on page 177 for Description.

#11 G - K1

#11 G - K2

#11 G - K5

#11 G - K7

#11 H - High Polished Chrome

#11 I - Gold-Filled (plain) in *Esquire* ad

#11 J - Gold-Filled (engine-turned) in *Esquire* ad

#11 K - Town and Country Lily Pond Scene with R.F. Thiele's name engraved on the front of the case. (This is probably one of Zippo's first attempts at producing this illustration, which eventually became part of the Town and Country series. The motif was air brushed when Zippo added it to its Town and Country series. This is extremely rare, to say the least. Notice the deep etching, which gives the appearance of high relief.)

#11 L - Test Sample Insert Design Change

#11 M - Elsie Borden

#11 N - Roller Skater (line drawn sports test model)