

#10 - 1938-39 model

This model has diagonal lines cut on the face of the lighter as well as having the same soldered clips inside the lid, as access #9.

#10 A - Plain

#10 B - Metallique Initials

#10 C - Engraved Generic Advertising

#10 C1 - HYP

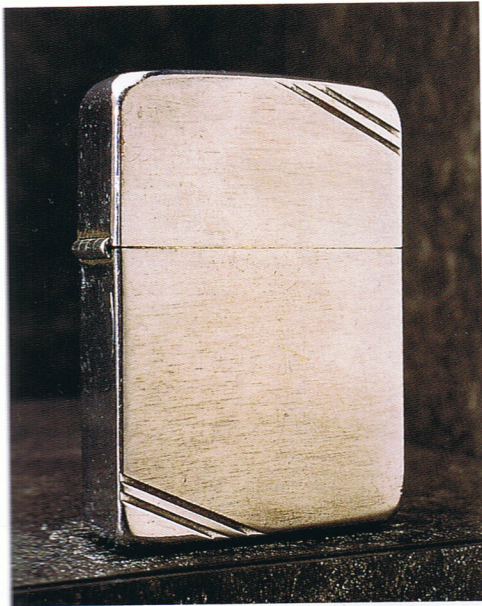
#10 D - Generic Metallique Advertising

#10 E - High Polish Chrome (extremely rare)

#10 F - Metal Emblems (put on by the owner)

I don't cover the 1939 1st Model Table lighter at this time. I cover it at a later point with the other Table Models. (See access #157)

#10 C1, \$400-\$450



#10 A, \$225-\$300



#10 D, \$450-\$500



#10 E, \$400-\$450