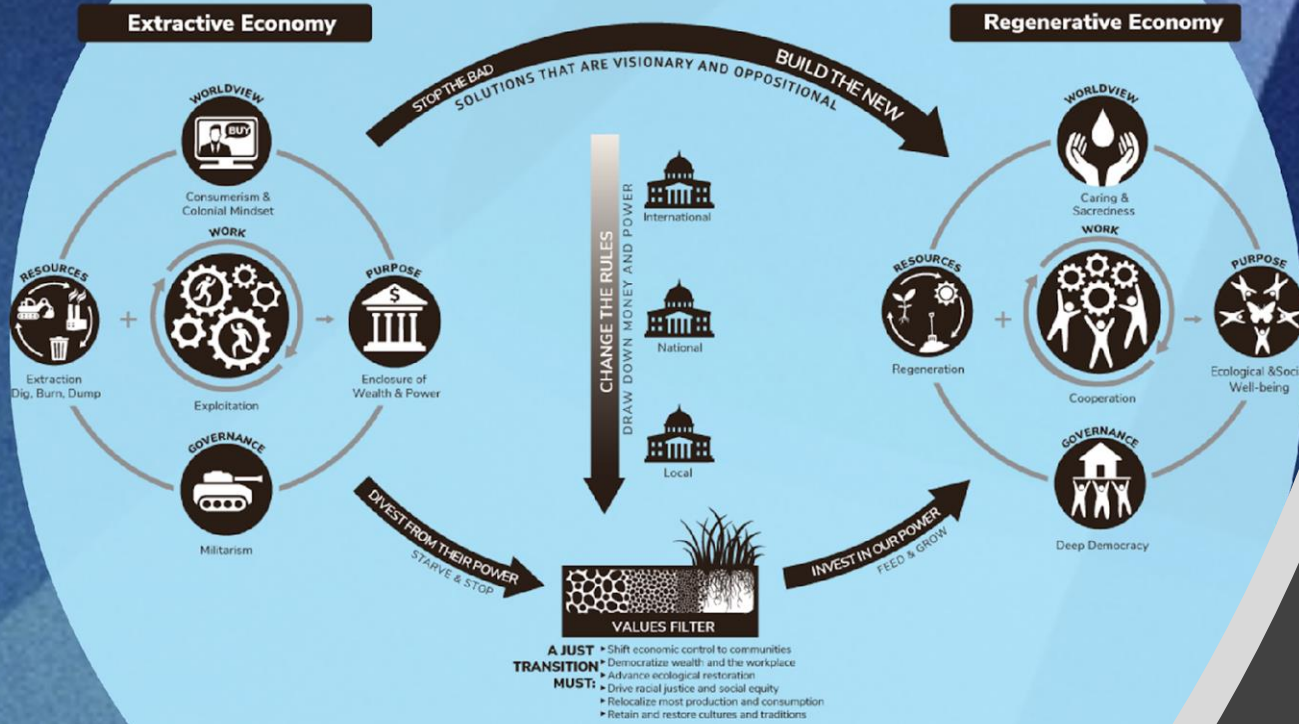


Just Transition Framework

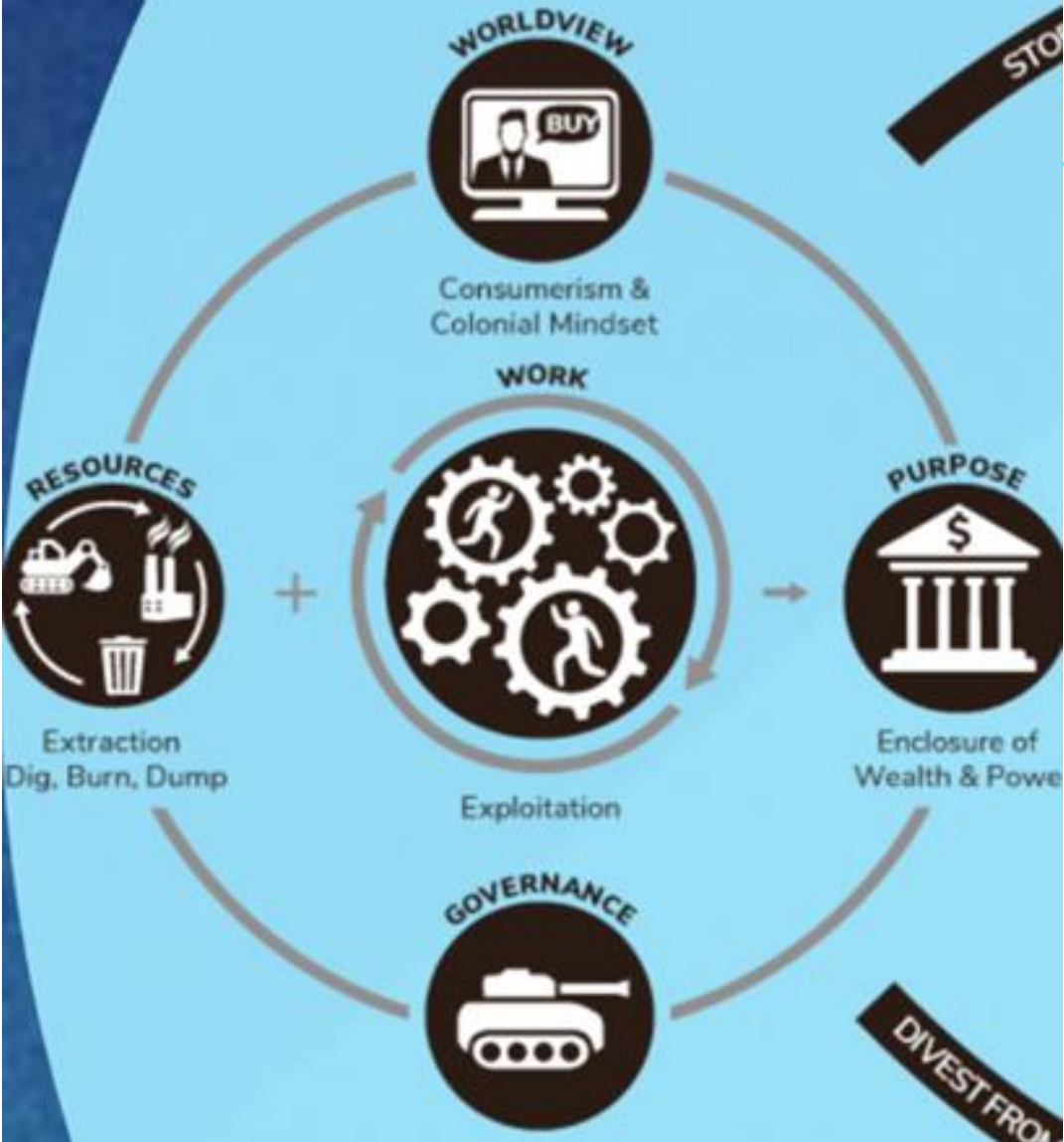


Movement Generation w/ OUR POWER CAMPAIGN
From: Banks + Tanks to Cooperation + Caring

The power landscapes
for POWER
(national, state, local)

We are stronger together

Extractive Economy



Profit? Or People and Planet?

- We live in an economy of extraction, endless growth and exploitation.
- This economy requires globalization and extreme inequality.
- Racism and White Supremacy divide people and keep the 1% in power. People at the margins suffer the most. The system is not working for most of us.
- NOW, humans all through the world are rising up to say, “No more!”
- New alliances are possible for real change.
- **POWER works for environmental justice; we all have a right to clean air, safe water, good paying jobs, and secure homes!**
- Our goal is immediate benefits for Black, Brown and low-income communities and long-term benefits for all Pennsylvanians.

Political Landscape-1: National

The landscape has radically shifted!

- **Biden's goals:**

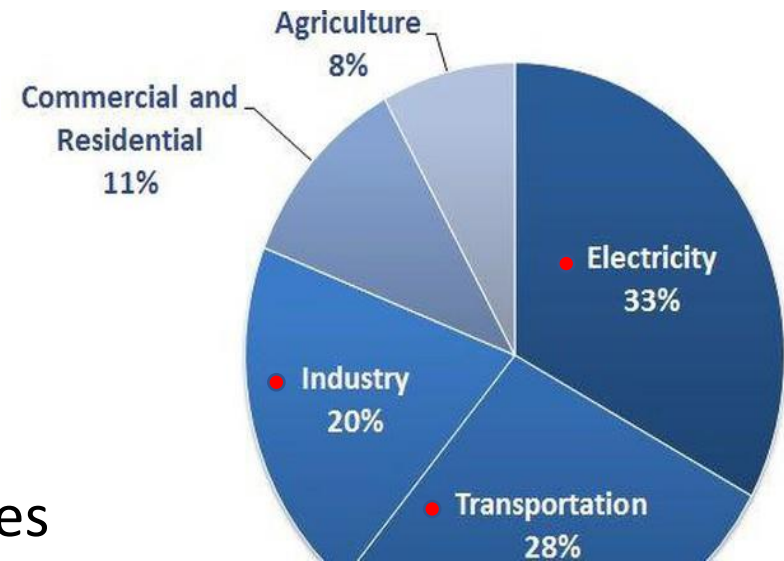
- Carbon pollution-free power sector by 2035
- Unionized “well-paying” clean energy jobs
- Net-zero emissions economy by 2050,
- “Hold polluters accountable”

- ✓ **Rejoin** Paris Agreement

- ✓ **Revoke** Keystone XL Pipeline permit.

- ✓ **Respect** Native Tribes and EJ communities

- **Congress:** Democrats have a slim advantage



Sources of Greenhouse Gas Emissions

Political Landscape -2: State & Local

Still dominated by the fossil fuel industry, but

- ✓ *PES closure was a victory!*
- ✓ *We got PUC Judges to better accommodate public hearing and climate change issues!*

State

- *Governor 's Office*
 - ***Public Utility Commission (PUC)***
 - ***Department of Environmental Protection***
 - ***Environmental Quality Board***
- ***Legislature (State Senate and House)***
- ***PECO, PGW, & other transport companies***
- *Industry Lobbyists*

Philadelphia

- ***Mayor 's Office***
- ***City Council***
- ***Septa (board member appointed by Mayor)***
- ***Philadelphia Housing Development Corporation***
- ***PGW*** <- ***Philadelphia Facilities Management Corporation***

Lancaster

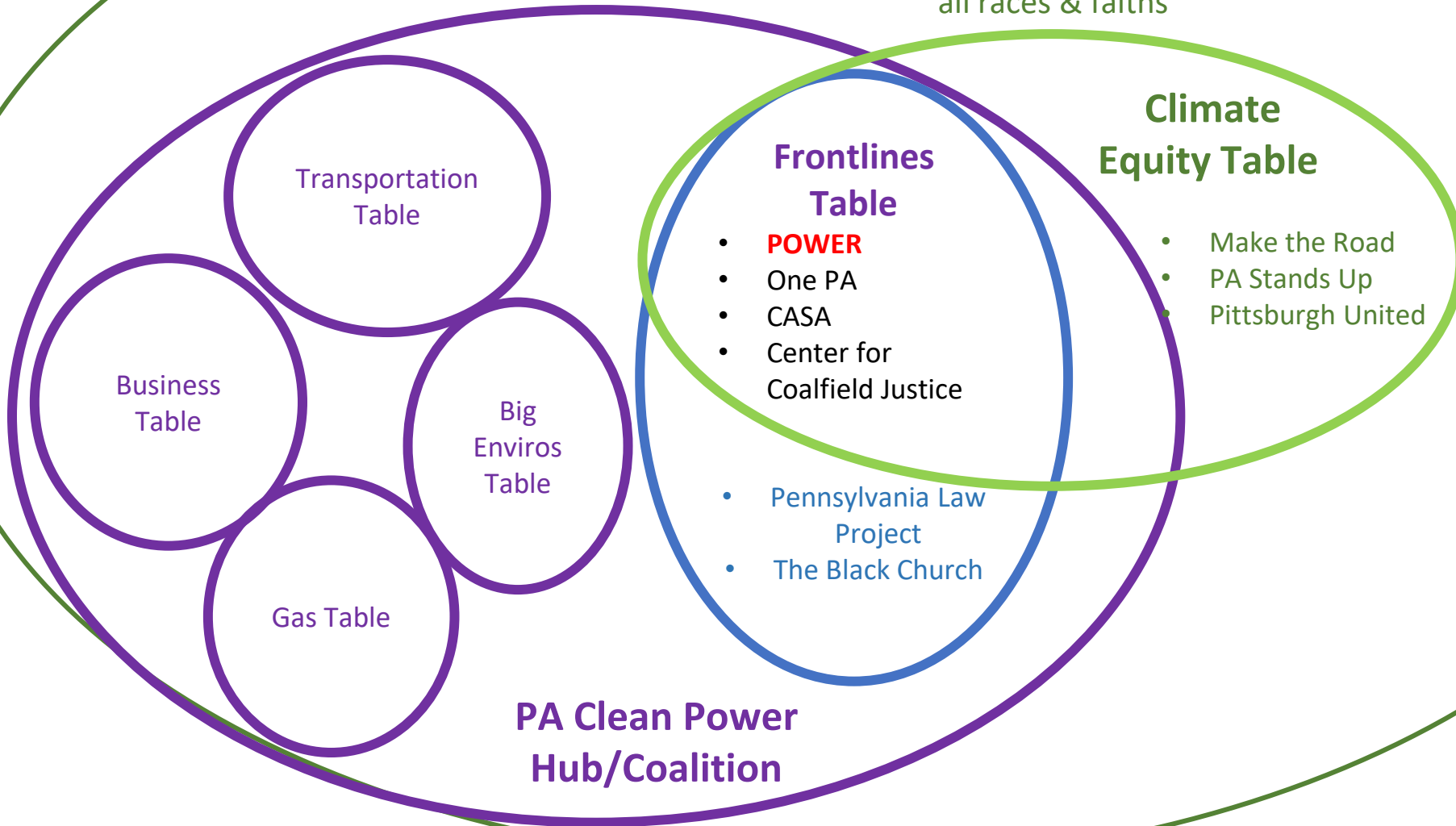
Lehigh Valley

Pottstown

Our State-Level Allies

“Green New Deal Working Space”

- Pro-jobs and fair transition
- Anti-racist
- Inclusive - Labor, EJ communities, all races & faiths



Transportation Table

Business Table

Gas Table

Big Enviro Table

Frontlines Table

- **POWER**
- One PA
- CASA
- Center for Coalfield Justice

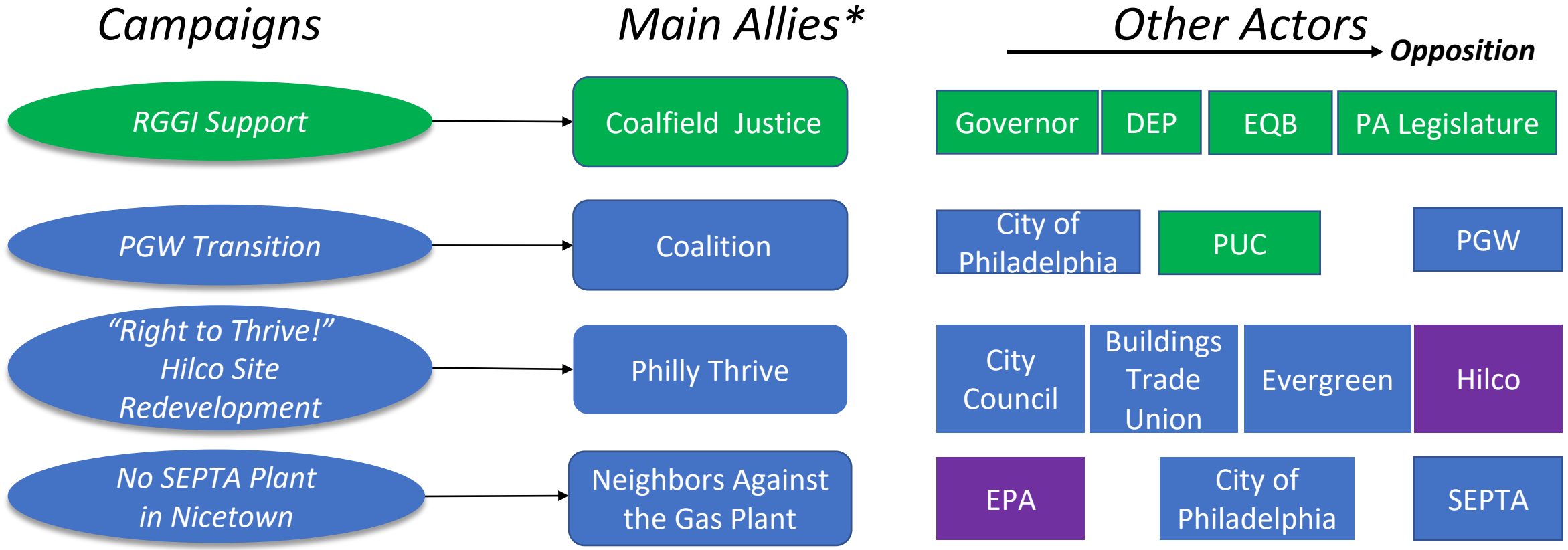
- Pennsylvania Law Project
- The Black Church

Climate Equity Table

- Make the Road
- PA Stands Up
- Pittsburgh United

PA Clean Power Hub/Coalition

Campaigns at the State and Local levels



*Legal advocacy ally is **EarthJustice**

Local State Multi-State

DEP – Department of Energy
 EPA – Environmental Protection Agency
 EQB – Environment Quality Board

PUC – Public Utility Commission
 PGW- Philadelphia Gas Works

Threats and Opportunities

- How do we build a new "winning majority coalition?" i.e. the realignment of labor, immigrants, urban areas, etc.
- What is the relationship between Biden's environmental justice agenda and the "Green New Deal" and Pennsylvania Politics?
- How will the fossil fuel industry fight back? How will they adapt?
- What new strategies, alliances and skills do we need in our struggle for a fair transition to a just, regenerative economy?

