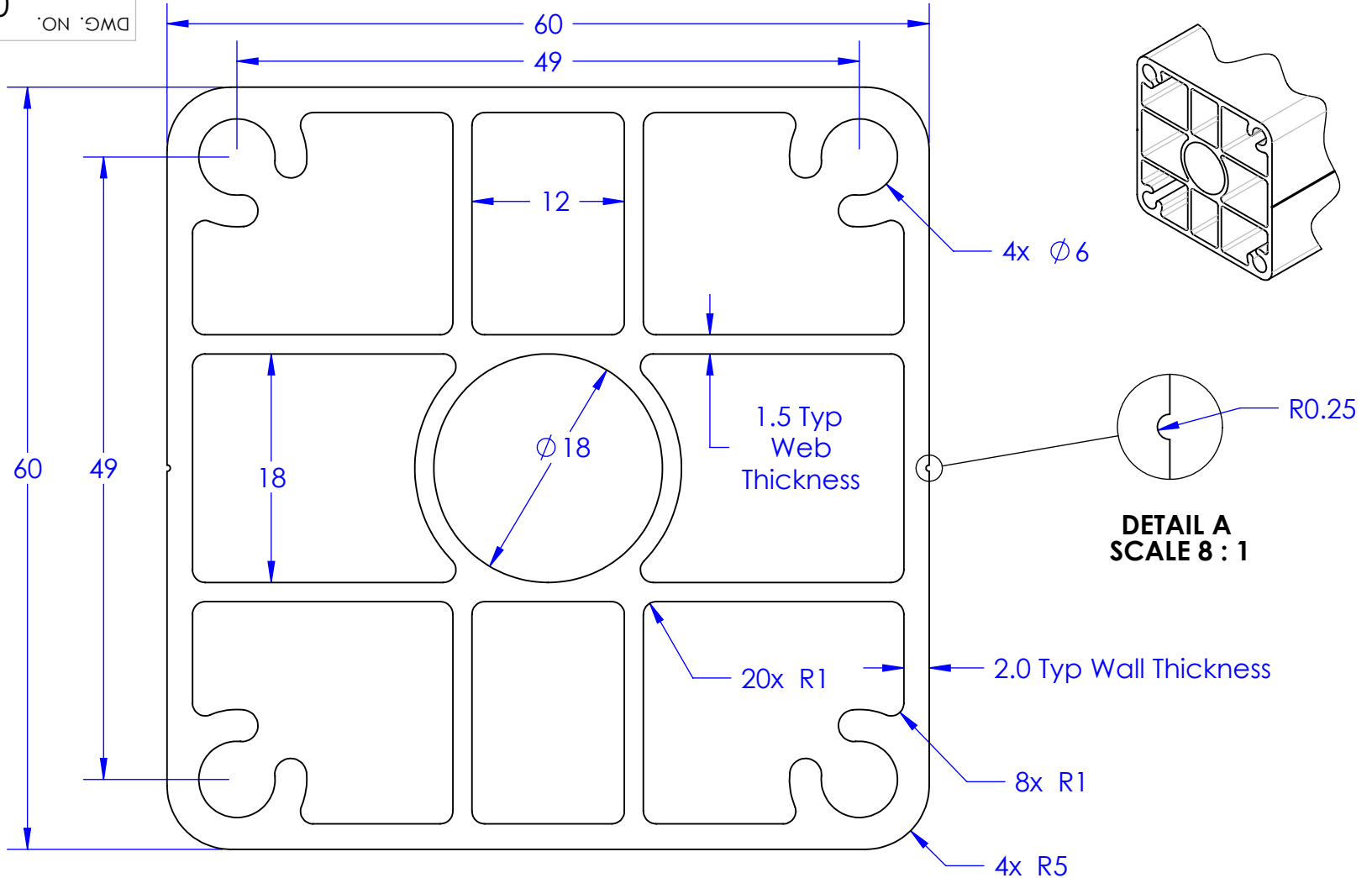


10-100-00

DWG. NO.

NOTE:
 Wall thickness: 2.5mm
 Material: Structural grade 6082 T6 Alu w/high
 Magnesium count



PROPRIETARY AND CONFIDENTIAL
 THE INFORMATION CONTAINED IN THIS DRAWING IS THE SOLE PROPERTY OF STAINLESS CABLE & RAILING, INC. ANY REPRODUCTION IN PART OR AS A WHOLE WITHOUT THE WRITTEN PERMISSION OF STAINLESS CABLE & RAILING, INC. IS PROHIBITED.

		UNLESS OTHERWISE SPECIFIED: DIMENSIONS ARE IN Millimeters		NAME	DATE
		TOLERANCES: x = 0.1 x.x = 0.1 x.xx = 0.01 x.xxx = 0.005	DRAWN	GM	04/25/08
		INTERPRET GEOMETRIC TOLERANCING PER:	CHECKED		
		MATERIAL 6082 T6 Aluminum	ENG APPR.		
		FINISH Powdercoat	MFG APPR.		
			Q.A.		
			COMMENTS: Powdercoating to meet or exceed AAMA2604 Salt Spray Resistance		
NEXT ASSY	USED ON				
APPLICATION		DO NOT SCALE DRAWING			

Stainless Cable & Railing, Inc. 888-686-7245 (RAIL)		
TITLE: Terminal Post		
SIZE	DWG. NO.	REV
A	03-001-01	PR1
SCALE: 2:1	WEIGHT:	SHEET 1 OF 1