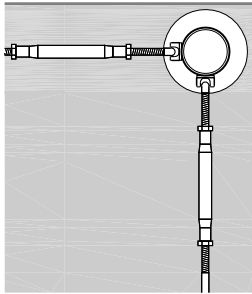
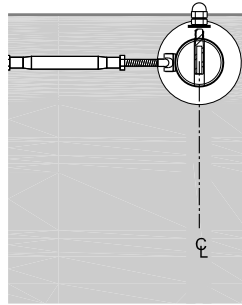


SINGLE POST



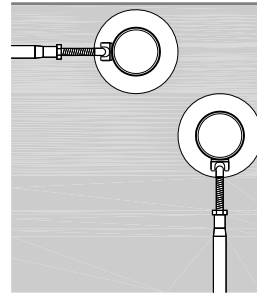
BOTH FITTING ATTACHED TO FACE

SINGLE POST



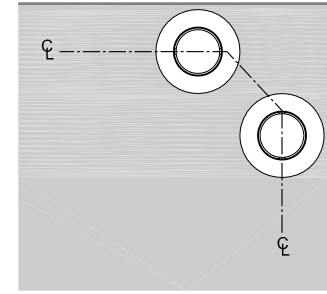
ONE FITTING ATTACHES THROUGH POST AND OTHER ATTACHES TO FACE

DOUBLE POST

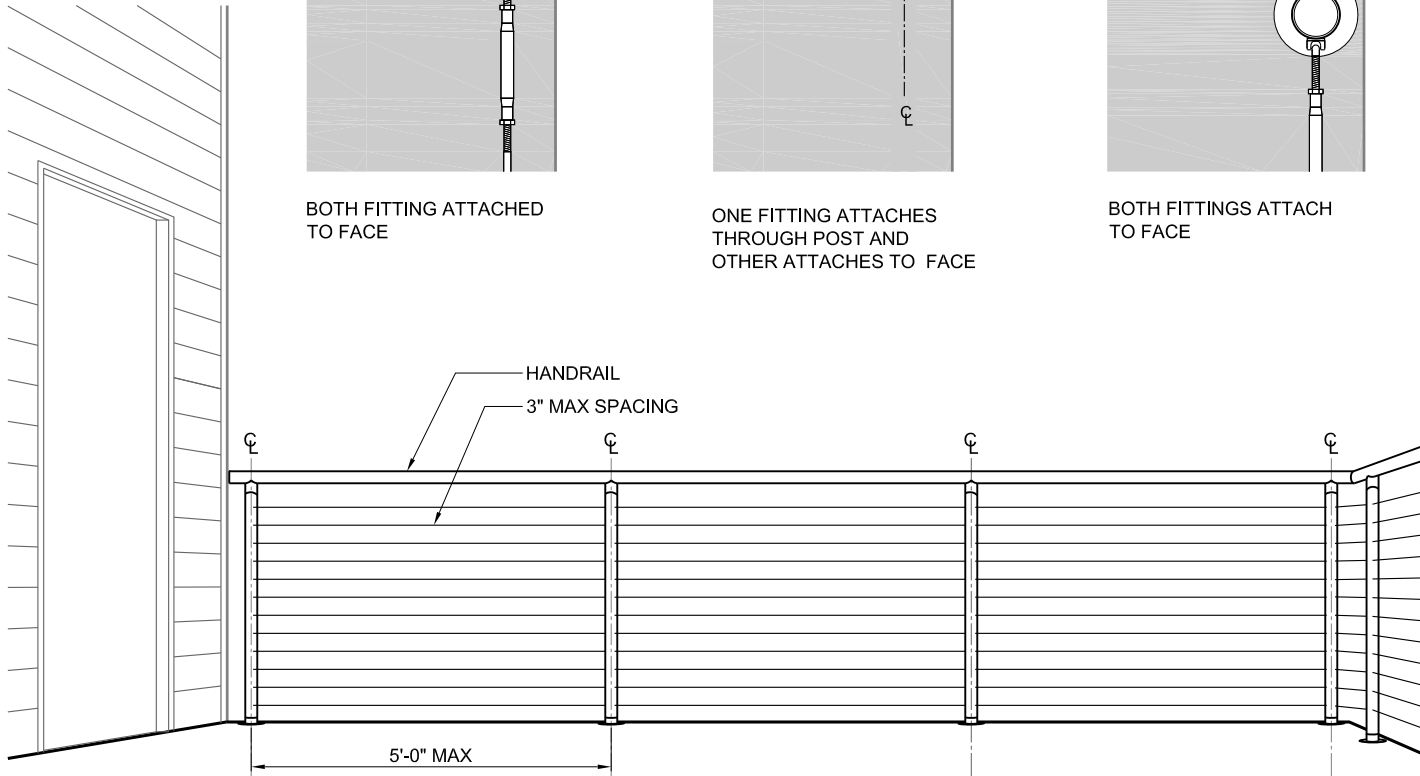


BOTH FITTINGS ATTACH TO FACE

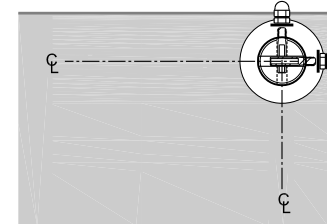
DOUBLE POST



CABLE RUNS CONTINUOUSLY THROUGH THE CORNER

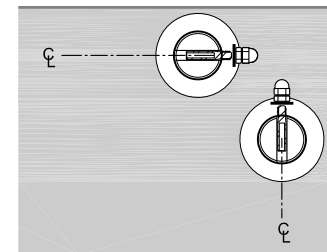


SINGLE POST



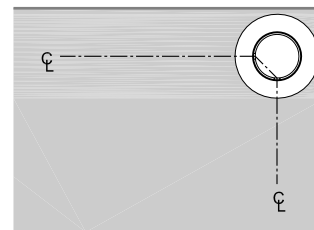
BOTH FITTING ATTACHED THROUGH POST. MUST OFFSET DRILL HOLES BY AT LEAST 1/2"

SINGLE POST



BOTH FITTINGS ATTACH THROUGH POST

SINGLE POST



CABLE RUNS CONTINUOUSLY THROUGH THE CORNER

MAINTAIN 5'-0" MAX SPACING BETWEEN POSTS TO MINIMIZE CABLE DEFLECTION

NOTE: BUILDING CODES VARY BY CITY & COUNTY. FOLLOWING THE INSTALLATION AND RAILING DESIGN INSTRUCTION AS DETAILED IN THIS DRAWING DOES NOT GUARANTEE CODE COMPLIANCE IN ALL AREAS. BEFORE STARING THE PROJECT, CHECK WITH LOCAL REQUIREMENT FOR USING AND INSTALLING CABLE RAILINGS.

DESIGN RECOMMENDATION: STAINLESS STEEL TUBE WITH CABLE INFILL DECK MOUNTED



Vancouver Business Park
3315 NE 112th Ave 72/73
Vancouver Wa 98682
Phone/Fax: 1-888-686-7245 (RAIL)
web: www.stainlesscablerailing.com
sales:stainlesscablerailing.com